

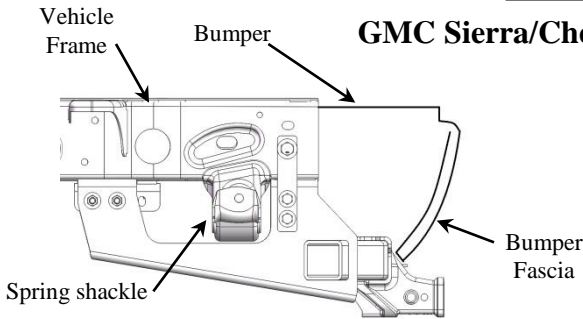
Draw Tite

Installation Instructions

Part Numbers:

GMC Sierra/Chevrolet Silverado 2500 & 3500 HD Pickups.

41950



Hitch Shown In Proper Position

(Shown on short bed with bolt-on bracket)

Equipment Required:

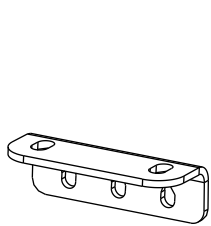
Fastener Kit: 41950F

Wrenches: 13mm, 21mm, 22mm, 3/4", 7/8"

Drill Bits: None

Other items: Plastic cutting tool, (short bed as needed. (heat shield))

(2) Bolt-on brackets supplied. Use on short-bed trucks only. Same bracket just rotate for other side.



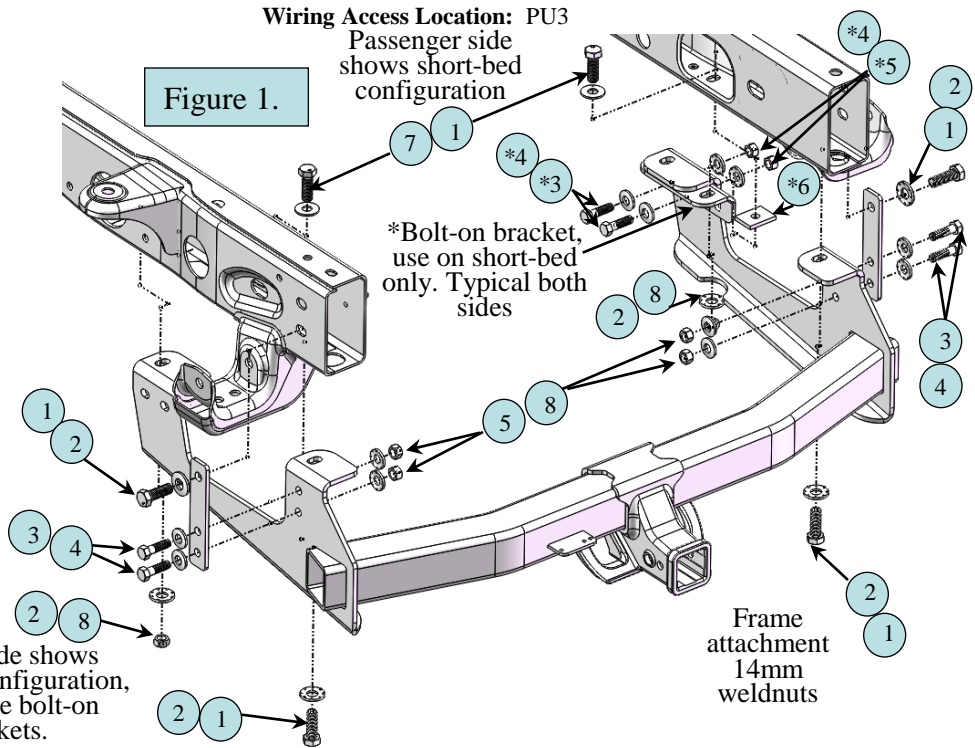
See next page for detail on short-bed trucks.

Driver side shows long-bed configuration, do not use bolt-on brackets.

Do Not Exceed Lower of Towing Vehicle Manufacturer's Rating or

Hitch type	Max Gross Trailer WT (LB)	Max Tongue WT (LB)
Weight Distributing	17,000 (7711 Kg)	1700 (771Kg)
Weight Carrying Ball Mount	15,000 (6803Kg)	1700 (771Kg)

Wiring Access Location: PU3
Passenger side shows short-bed configuration



1	Qty. (6)	Hex Bolt, M14 x 2.0 x 45mm CL10.9	5	Qty. (8)	Hex Nut, 1/2"-13
2	Qty. (6)	Conical Toothed Washer, 5/8" (black color)	6	Qty. (2)	Block, 1-1/2" x 2" with round hole (shortbed only)
3	Qty. (8)	Hex Bolt, 1/2"-13 x 1-1/2" Gr.5 (shortbed only)	7	Qty. (3)	Flat Washer, 9/16"
4	Qty.(16)	Conical Toothed Washer, 1/2" (gold color)	8	Qty. (2)	Hex Nut, M14 x 2.0

- Lower spare tire from underneath of truck for ease of installation. Also remove existing 14mm bolts from end of each truck frame rail. Return bolts to vehicle owner. If truck has existing hitch remove bumper bolts also.
- On 2015 and newer vehicles not equipped with a hitch, you will need to remove an OEM bumper mount hitch. (See figure 3)
- On short bed trucks, remove rearmost 8mm bolt holding plastic heat shield to bottom of frame on passenger's side. See picture 1. next page.
- For short bed trucks, attach bolt-on brackets supplied with hitch, to side brackets as shown above.
- For long-bed trucks, discard bolt-on brackets or give to vehicle owner explaining that they are not needed for 8' bed applications.
- Raise hitch into position locating slots in hitch over existing weldnuts in truck bumper and end of truck frame rails.
- For short-bed trucks sandwich tab of plastic heat shield between hitch and frame underneath on passenger side of truck. In some cases it may be necessary to trim plastic gusset on heat shield to allow shield to stay in place. See picture next page.
- Install supplied 14mm bolts and conical toothed washers into existing weldnuts as shown above and torque to 115 Lb.-Ft. (156 N*M).
- On forward attachments install supplied M14 bolts and flat washers through access hole on inside or outside of frame and down through slots in bottom of truck frame and hitch. Attach nuts and conical toothed washers to forward bolts both sides and torque to 110 Lb.-Ft. (136 N*M).
- Install supplied M14 bolts into the side of each frame rail through the bar supplied with hitch as shown above and torque to 115 Lb.-Ft. (156 N*M). Also install 1/2" bolts, conical washers and nuts through the supplied bar and side bracket as shown above. Tighten all 1/2"-13 Gr.5 bolts with torque wrench to 75 Lb.-Ft. (102 N*M).
- Raise spare tire back into place.

Note: check hitch frequently, making sure all fasteners and ball are properly tightened. If hitch is removed, plug all holes in trunk pan or other body panels to prevent entry of water and exhaust fumes. A hitch or ball which has been damaged should be removed and replaced. Observe safety precautions when working beneath a vehicle and wear eye protection. Do not cut access or attachment holes with a torch.

This product complies with safety specifications and requirements for connecting devices and towing systems of the state of New York, V.E.S.C. Regulation V-5 and SAE J684.

Installation Instructions

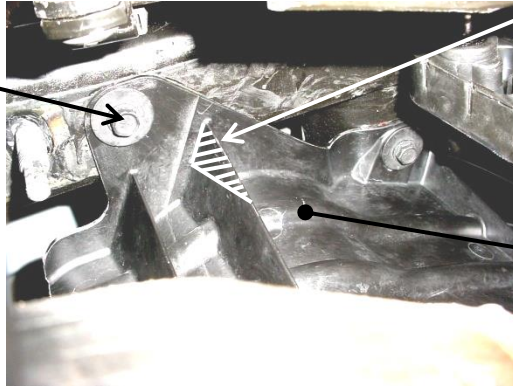
GMC Sierra/Chevrolet Silverado 2500 & 3500 HD Pickups.

Part Numbers:

41950

Looking up underneath passenger side frame rail, showing plastic spare tire shield

Remove this bolt short-bed. Leave shield in place between frame and hitch bracket.



Trim plastic if needed in area shown on short bed trucks

Picture 1.

Plastic spare tire shield

Magnified view from previous page showing detail of bolt-on brackets for short-bed trucks ONLY.

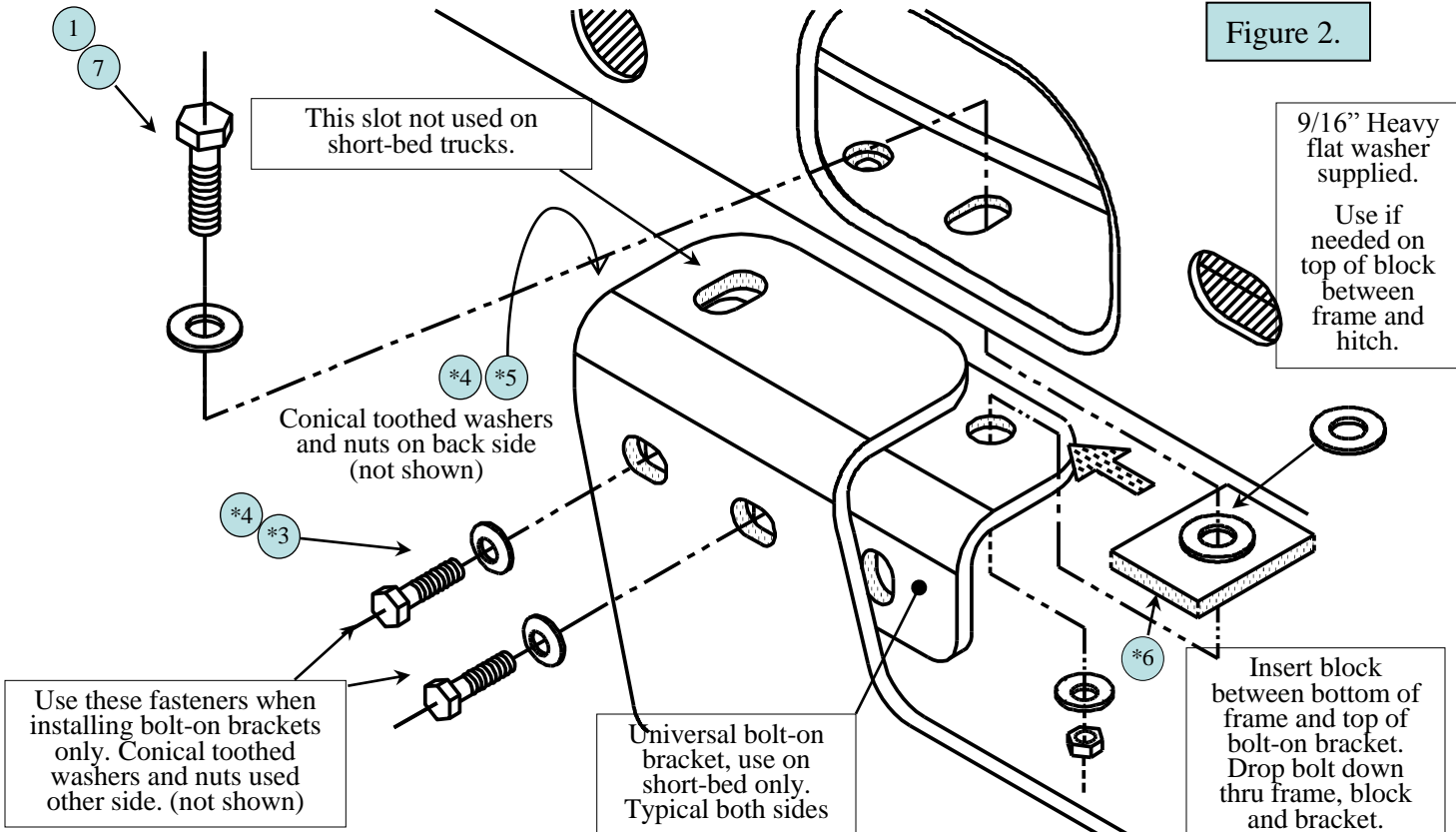


Figure 2.

This slot not used on short-bed trucks.

Conical toothed washers and nuts on back side (not shown)

Use these fasteners when installing bolt-on brackets only. Conical toothed washers and nuts used other side. (not shown)

Universal bolt-on bracket, use on short-bed only. Typical both sides

9/16" Heavy flat washer supplied.

Use if needed on top of block between frame and hitch.

Insert block between bottom of frame and top of bolt-on bracket. Drop bolt down thru frame, block and bracket.

Note: check hitch frequently, making sure all fasteners and ball are properly tightened. If hitch is removed, plug all holes in trunk pan or other body panels to prevent entry of water and exhaust fumes. A hitch or ball which has been damaged should be removed and replaced. Observe safety precautions when working beneath a vehicle and wear eye protection. Do not cut access or attachment holes with a torch.

Installation Instructions

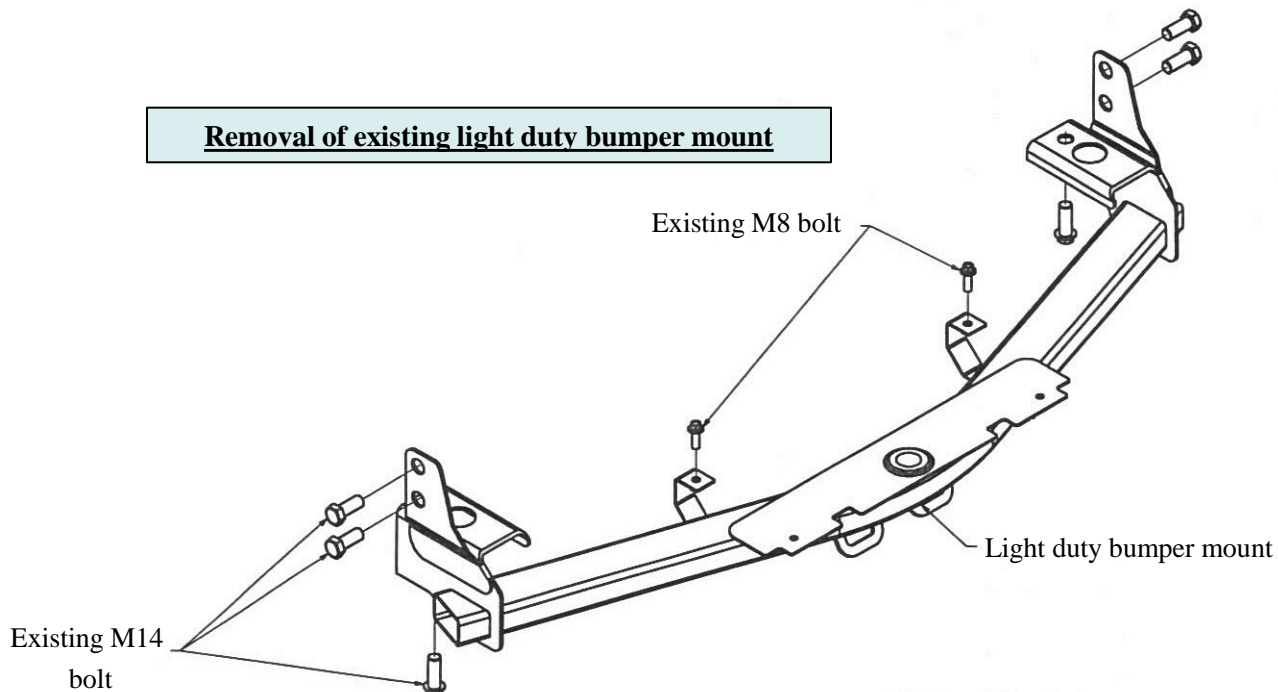
GMC Sierra/Chevrolet Silverado 2500 & 3500 HD Pickups.

Part Numbers:

41950

Figure 3.

Removal of existing light duty bumper mount



Note: check hitch frequently, making sure all fasteners and ball are properly tightened. If hitch is removed, plug all holes in trunk pan or other body panels to prevent entry of water and exhaust fumes. A hitch or ball which has been damaged should be removed and replaced. Observe safety precautions when working beneath a vehicle and wear eye protection. Do not cut access or attachment holes with a torch.