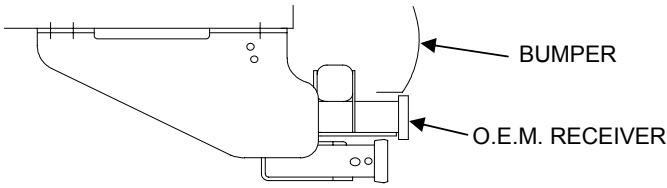




Installation Instructions DODGE RAM PICKUP WITH OR WITHOUT O.E.M. HITCH

Part Numbers:
41929



Hitch Shown In Proper Position

Equipment Required: 1500 short bed model – hack saw

Fastener Kit: F41929

Wrenches: 3/4", 13/16", 15/16"

Drill Bits: 1/2"

FISHWIRE (SUPPLIED)

**Do Not Exceed Lower of Towing Vehicle
Manufacturer's Rating or**

Hitch type	Max Gross Trailer WT (LB)	Max Tongue WT (LB)
Weight Distributing	15000 (6810 Kg)	1500 (681 Kg)
Weight Carrying Ball Mount	12000 (5448Kg)	1200 (545 Kg)

Wiring Access Location: PU3

**VEHICLE FRAME RAIL SHORT BED
MODEL SHOWN THIS SIDE**

HOLES TO BE DRILLED
SHORT BED MODELS ONLY

BOTH HOLES TO BE DRILLED
SHORT BED MODELS ONLY

HOLE TO BE DRILLED
LONG BED MODELS
ONLY

BUMPER BRACKET

PLACE ITEM 3 BETWEEN
BUMPER BRACKET AND
HITCH SIDE BRACKET
AS REQUIRED

PUSH/SLIDE 1/4" THICK
BLOCKS THROUGH END
OF FRAME-BOTH SIDES
SEE FIGURE 2

USE THIS HOLE FOR
2500/3500 MODELS

USE THIS HOLE FOR
1500 MODELS

**VEHICLE FRAME RAIL LONG BED
MODEL SHOWN THIS SIDE**

FISHWIRE CARRIAGE
BOLTS THROUGH SLOTS
IN FRAME – BOTH SIDES
SEE FIGURE 3

①②③④⑤⑥

①⑩⑧⑦

⑪⑩⑨⑦



FIGURE 1

①	Qty. (2)	HEX BOLT 9/16-12 X 2.0" GR5	⑦	Qty. (6)	CARRIAGE BOLT 1/2"-13 X 1.75 GR5
②	Qty. (2)	FLAT WASHER 9/16"	⑧	Qty. (2)	BLOCK .25 X 1.50 X 3.50
③	Qty. (2)	BLOCK .375 X 1.50 X 3.00	⑨	Qty. (2)	BLOCK .25 X 2.00 X 2.00
④	Qty. (2)	BLOCK .25 X 1.50 X 2.00	⑩	Qty. (6)	LOCK WASHER 1/2"
⑤	Qty. (2)	LOCK WASHER 9/16	⑪	Qty. (6)	HEX NUT 1/2"
⑥	Qty. (2)	HEX NUT 9/16-12			

Tighten all 1/2-13 fasteners with torque wrench to 75 Lb.-Ft. (102 n*m)
Tighten all 9/16-12 fasteners with torque wrench to 110 Lb.-Ft. (149 n*m)

Installation Instructions

DODGE RAM PICKUP

WITH OR WITHOUT O.E.M. HITCH

Part Numbers:
41929

VEHICLE
FRAME RAIL

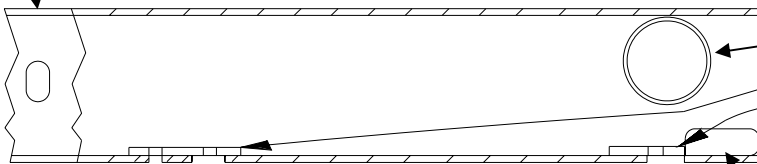


FIGURE 2

FISHWIRE CARRIAGE
BOLTS THROUGH SLOTS
IN FRAME TO BOLT HOLES
- 3 PLACES EACH SIDE

VEHICLE
FRAME RAIL

FRAME
SPACER

NOTE
**BLOCKS MUST BE SLID / PUSHED INTO
PLACE BEFORE FISHWIRING BOLTS IN.**

VEHICLE CROSSMEMBER

PUSH/SLIDE 1/4" THICK BLOCKS
THROUGH END OF FRAME BETWEEN
FRAME SPACER AND VEHICLE
CROSSMEMBER TO BOLT HOLE
- 2 PLACES EACH SIDE

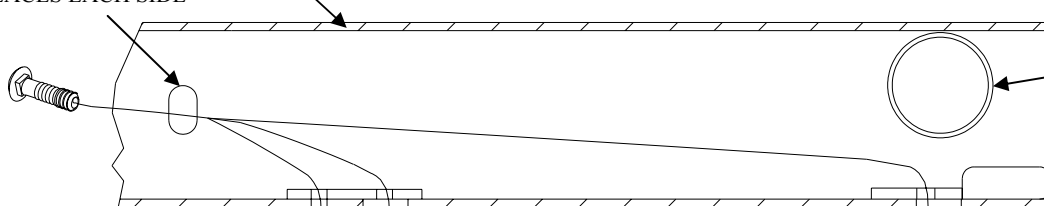


FIGURE 3

FISHWIRE

EXHAUST INNER
SUPPORT ROD

VEHICLE
CROSSMEMBER

FRAME
SPACER

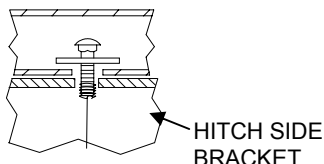


FIGURE 4

HITCH SIDE
BRACKET

CUT ROD
(1500 SHORT
BED ONLY)

FORWARD

REMOVE THIS
PORTION

RUBBER
ISOLATOR

BUMPER
BRACKET

AS REQUIRED

HITCH SIDE
BRACKET

**2006-08 1500 SHORT BED MODELS
PASSENGER SIDE FRAME RAIL**

FIGURE 5

1. RAISE HITCH INTO POSITION BY MOVING HITCH FORWARD TO CLEAR BUMPER MOUNTING BOLTS AND THEN SLIDING HITCH REARWARD INTO POSITION, ALIGNING HOLES IN HITCH WITH HOLES IN FRAME RAIL AND SLOT IN VERTICAL BUMPER BRACKET, AS SHOWN.
- 2006-08 1500 SHORT BED MODEL** – CUT THE INNER EXHAUST SUPPORT ROD AND REMOVE IT FROM THE RUBBER EXHAUST ISOLATOR.
- NOTE;** ON SHORT BOX MODELS, ALIGN REARMOST HOLE IN HITCH WITH REARMOST HOLE IN VEHICLE FRAME. FORWARD HOLES WILL NOT LINE UP WITH EXISTING HOLE AND WILL HAVE TO BE DRILLED IN VEHICLE FRAME. LONG BED MODEL REQUIRED TO DRILL THE FORWARD MOST HOLE IN THE FRAME AS SHOWN IN FIGURE 1.
2. INSTALL HEX BOLT AND FLAT WASHER THROUGH HOLE IN HITCH SIDE BRACKET INTO SLOT IN BUMPER BRACKET, EACH SIDE (SEE FIGURE 1 & 5). SEE FIGURE 1 FOR PROPER HOLE. SECURE WITH BLOCK (4) (.25 X 1.5 X 2.0), LOCKWASHER (5), AND NUT (6). SEE FIGURE 1 & 5 FOR FASTENER ORIENTATION.
- NOTE;** IF NECESSARY, INSTALL 3/8" X 1.50 X 3.0 BLOCK BETWEEN HITCH SIDE BRACKET AND VERTICAL BUMPER BRACKET AS SHOWN IN FIGURE 1.
3. ON SHORT BOX MODELS, USE HITCH AS A TEMPLATE TO DRILL THROUGH FORWARD HOLES IN FRAME, EACH SIDE.
 4. SLIDE / PUSH 1/4" X 1.50 X 3.50 BLOCKS AND 1/4 X 2.00 X 2.00 BLOCKS THROUGH END OF FRAME BETWEEN FRAME SPACER AND VEHICLE CROSSMEMBER AND ALIGN WITH HOLES IN HITCH SIDE BRACKET (SEE FIGURE 2). FISHWIRE CARRIAGE BOLTS THROUGH SLOT IN FRAME RAIL AND DOWN THROUGH BLOCKS AND SIDE BRACKETS (SEE FIGURE 3 AND 4). SECURE WITH LOCKWASHERS AND NUTS.
- NOTE;** ON SOME MODELS IT MAY BE POSSIBLE TO INSTALL REARMOST CARRIAGE BOLT THROUGH THE END OF VEHICLE CROSSMEMBER AND DOWN THROUGH BLOCK AND FRAME RAIL INTO SIDE BRACKETS, EACH SIDE.

Tighten all 1/2-13 fasteners with torque wrench to 75 Lb.-Ft. (102 n*m)

Tighten all 9/16-12 fasteners with torque wrench to 110 Lb.-Ft. (149 n*m)