



Installation Instructions

PART NUMBERS: 36588, 90248, 06172

Applications:

Years	Make	Models
2006-Current*	Toyota	RAV 4

*Visit our website for the most up to date information regarding application years and trim levels.

Installation Time: 20 min

The time listed above is the average time for professional installers. If you do not feel comfortable performing this installation on your own or are in need of assistance, please contact a professional installer.



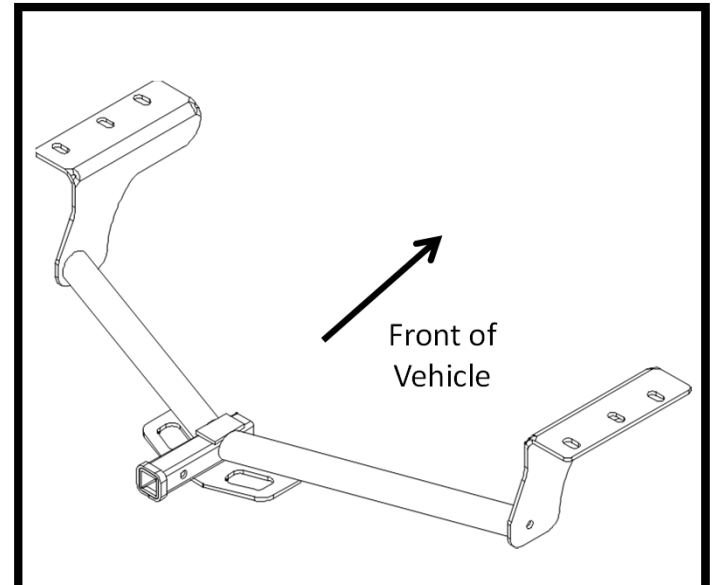
Representative Vehicle Photo

Equipment Required:

Safety Glasses	Ratchet	10 mm 12 mm 17 mm 19 mm Sockets	Torque Wrench	Exhaust Removal Pliers
6" Socket Extension	Flat Head Screw Driver			

DO NOT EXCEED LOWER OF TOWING VEHICLE MANUFACTURER'S RATING OR:

Hitch Type	Max Gross Trailer Weight	Max Tongue Weight
Weight Carrying	3500 lb. (1589 kg)	300 lb. (136 kg)
Weight Distributing	X	X





Hitch Illustration

Always wear SAFETY GLASSES when installing hitch

Installation Instructions

PART NUMBERS: 36588, 90248, 06172

Fastener Kit: 36588F		
①	Qty. (5)	Bolt M12x1.25x40 CL10.9 
②	Qty. (5)	Conical washer 1/2" 

Drawbar Kit:

36051

Drawbar must be used in the **RISE** position only.

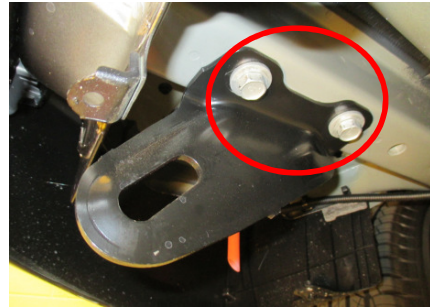
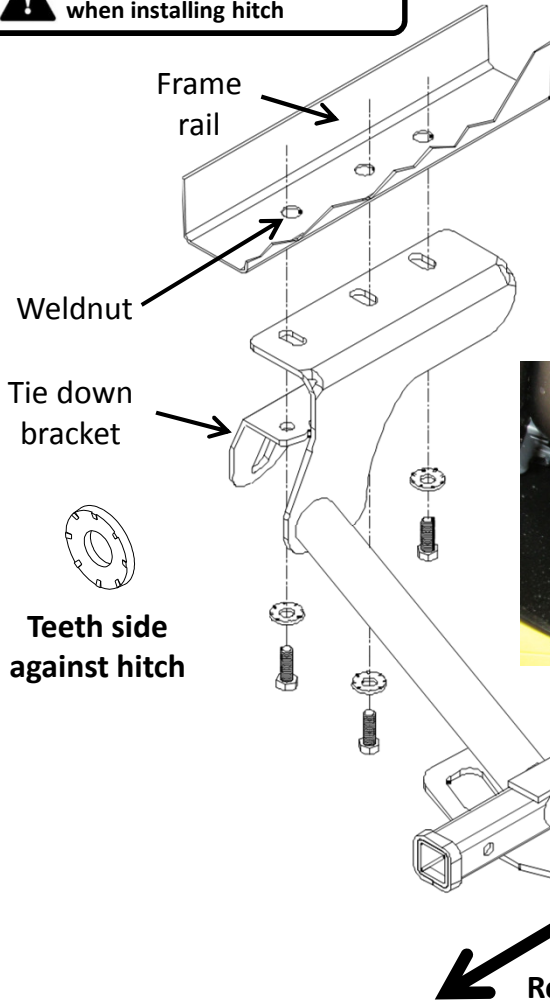


Figure 3

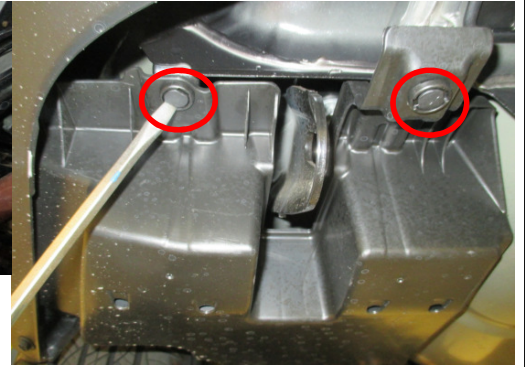


Figure 2

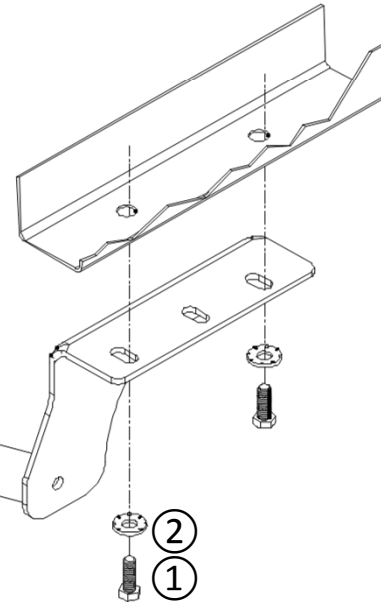


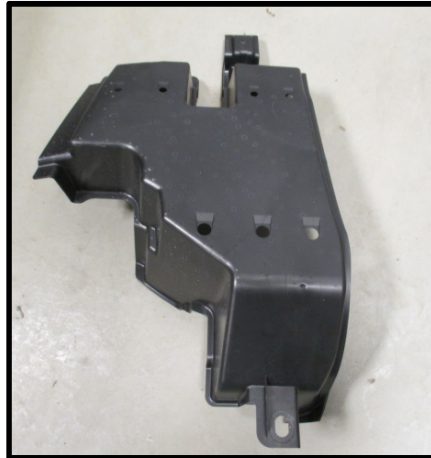
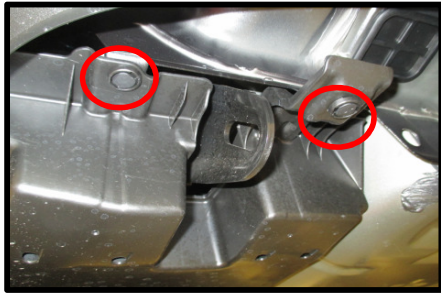
Figure 4

1. Driver side bottom plastic appearance panel removal - use flat head screwdriver and 10 mm socket to remove (2) plastic rivets and (1) flange nut from the panel, see Figure 2. Return to vehicle owner.
2. Tie down bracket removal - use 17 mm socket to remove (2) bolts from bracket, see Figure 3.
3. Lower exhaust - remove (1) rubber isolator from exhaust rod on passenger side.
4. Exhaust rod removal – use 12 mm socket to remove (2) bolts that secure the exhaust rod near trunk pan, see Figure 4. Return to vehicle owner.
5. Hitch installation - raise the hitch into position over existing weldnuts and loosely install M12 bolt ① and conical washer ② into weldnuts.
NOTE: On driver side, sandwich the hitch bracket between frame rail and tie down bracket, see Figure 1.
6. **Tighten all fasteners with torque wrench to 76 Lb.-Ft. (103 N*M)**
7. **Proper torque is needed to keep the hitch secure to the vehicle when towing.**
Reinstall the exhaust rod at the rubber isolator.

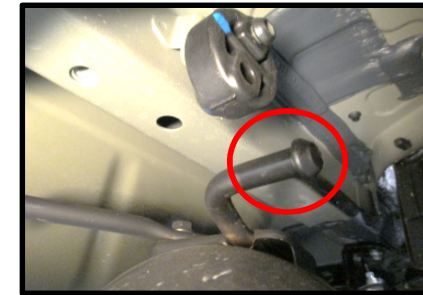
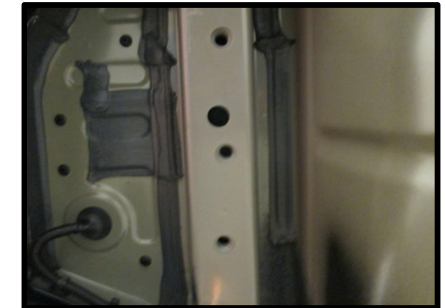
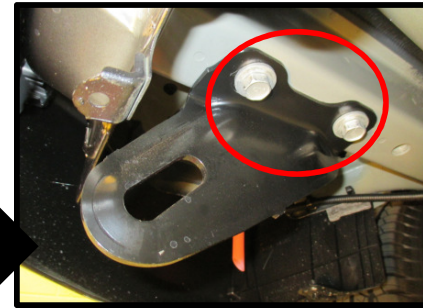
Note: check hitch frequently, making sure all fasteners and ball are properly tightened. If hitch is removed, plug all holes in trunk pan or other body panels to prevent entry of water and exhaust fumes. A hitch or ball which has been damaged should be removed and replaced. Observe safety precautions when working beneath a vehicle and wear eye protection. Do not cut access or attachment holes with a torch.

This product complies with safety specifications and requirements for connecting devices and towing systems of the state of New York, V.E.S.C. Regulation V-5 and SAE J684.

1. Driver side bottom plastic appearance panel removal - use flat head screwdriver and 10 mm socket to remove (2) plastic rivets and (1) flange nut from the panel, see Figure 2. Return to vehicle owner.

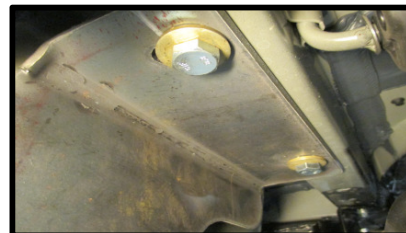
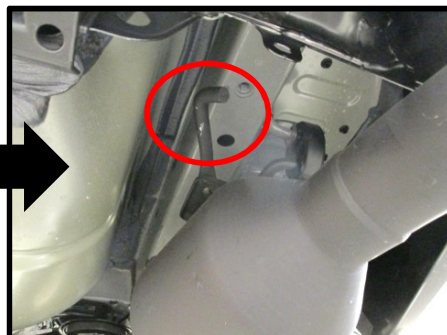


2. Tie down bracket removal - use 17 mm socket to remove (2) bolts from bracket, see Figure 3.



4. Exhaust rod removal – use 12 mm socket to remove (2) bolts that secure the exhaust rod near trunk pan, see Figure 4. Return to vehicle owner.

5. Hitch installation - raise the hitch into position over existing weldnuts and loosely install M12 bolt ① and conical washer ② into weldnuts. NOTE: On driver side, sandwich the hitch bracket between frame rail and tie down bracket, see Figure 1.



6. **Tighten all fasteners with torque wrench to 76 Lb.-Ft. (103 N*M)**

⚠ Proper torque is needed to keep the hitch secure to the vehicle when towing.

7. Reinstall the exhaust at the rubber isolator.

