

Installation Instructions

Lexus ES350 & 300h

Drawbar Kit:
36071

Drawbar must be used in the **RISE** position only.

Part Numbers:

36530

90227

06154

36921 U-Haul

**Do Not Exceed Lower of Towing Vehicle
Manufacturer's Rating or**

3500 LB (1589 Kg) Max Gross Trailer Weight

300 LB (136 Kg) Max Tongue Weight

Accessory Rating

B

Wiring Access Location: PC3, 4

Hitch Shown In Proper Position

Equipment Required: Pull wires (provided), Tin snips, lubricant or soapy water

Fastener Kit: 36530F

Wrenches: 10mm, 12mm, 13mm, 14mm, 17mm, 11-1/16", 3/4", and small screwdriver

Drill Bits: 1/4" & 1" drill

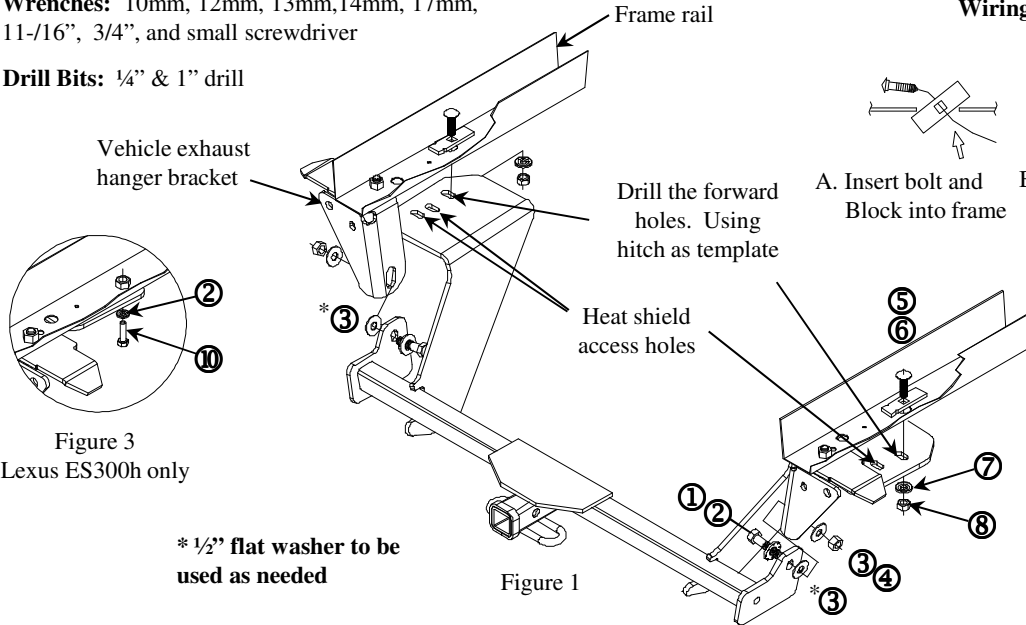


Figure 3
Lexus ES300h only

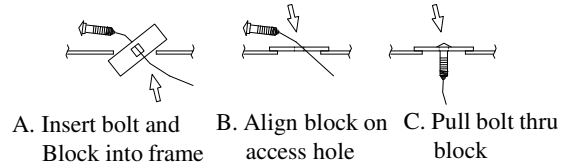
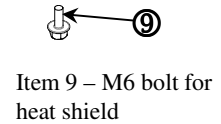


Figure 2

Pull wire Procedure



Item 9 – M6 bolt for heat shield

①	Qty. (2)	Hex bolt 1/2-13 X 1.75 GR5	⑥	Qty. (2)	Spacer
②	Qty. (2)	Conical washer 1/2"	⑦	Qty. (2)	Conical washer 7/16"
③	Qty. (4)	Flat washer 1/2" * (2) optional	⑧	Qty. (2)	Hex nut 7/16-14
④	Qty. (2)	Hex nut 1/2"	⑨	Qty. (2)	Hex bolt M6 X 1.00 X 16mm
⑤	Qty. (2)	Carriage bolt 7/16-14 X 1.50 GR5	⑩	Qty. (1)	Hex bolt M10 X 1.25 X 30mm

- Remove, under vehicle, appearance panel on the ES300h only and return to owner.
- Lower exhaust system at the rubber isolator (4 places). Spraying a lubricant on the metal hanger rod and the rubber isolator helps with removal. Be sure to **Support the exhaust system**. Lower the exhaust further by removing the hanger behind the passenger side muffler and the next hanger using a 12mm socket.
- Loosen the vehicles exhaust, at the hanger brackets, using a 14mm socket (3 places) each side.
- Remove the heat shield/shields.
- Temporarily raise the hitch into position, over the exhaust, and loosely install the 1/2" fasteners to the vehicle hanger brackets. Use the additional 1/2 flat washer (*3) as needed due to vehicle variance. Push the forward brackets into place, against the bottom of vehicle frame. If forward hole (both sides) do not align with an existing vehicle frame hole then mark and center punch the hole location to be drilled using the hitch as a template.
- Lower hitch and drill 1/4" pilot hole and 1" access hole as needed (caution wires, fuel lines, etc.). Mark and drill the heat shield for the 7/16 carriage bolt.
- Feed (items 5 & 6) into the frame rail using the reverse pull wire procedure. Figure 2. Leave pull wires attach.
- Raise hitch back into position and loosely install the 1/2 fasteners to the vehicle hanger brackets, feed the pull wires through the bracket and install remaining fasteners.
- Reinstall the heat shield.
- Tighten all fasteners to the required torque specification.

Tighten all M10 CL8.8 fasteners with torque wrench to 38 Lb.-Ft. (52 N*M)
Tighten all 7/16 GR 5 fasteners with torque wrench to 50 Lb.-Ft. (68 N*M)
Tighten all 1/2 GR5 fasteners with torque wrench to 75 Lb.-Ft. (102 N*M)