



Installation Instructions

PART NUMBERS: 24925, 60362, 77313

Applications:

Years	Make	Models
-------	------	--------

2015-Current*	Volkswagen	Golf
---------------	------------	------

*Visit our website for the most up to date information regarding application years and trim levels.

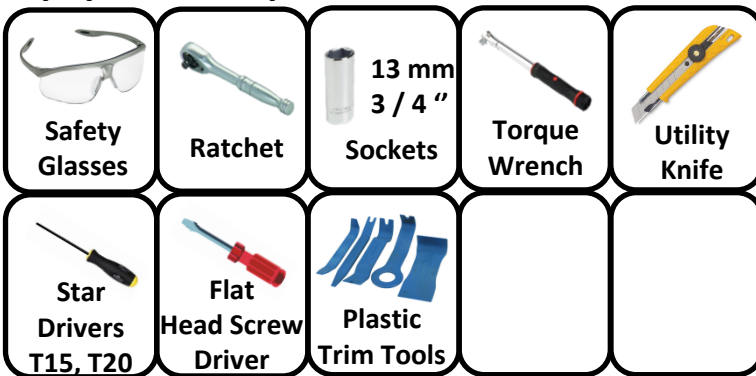
Installation Time: 1 hr.

The time listed above is the average time for professional installers. If you do not feel comfortable performing this installation on your own or are in need of assistance, please contact a professional installer.



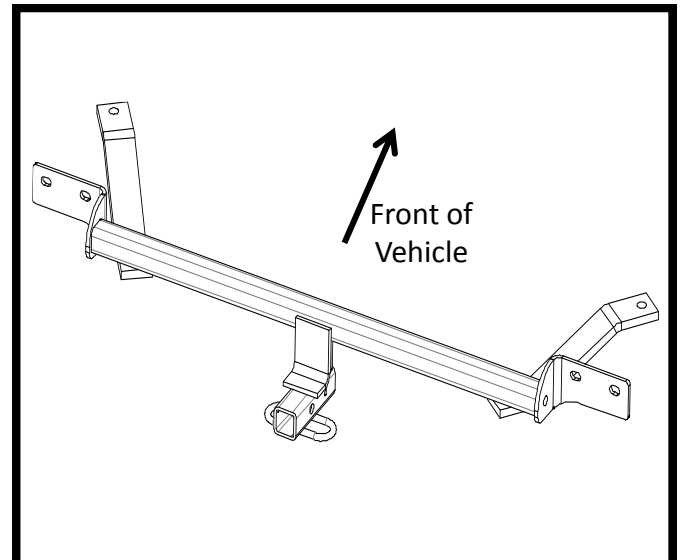
Representative Vehicle Photo

Equipment Required:



DO NOT EXCEED LOWER OF TOWING VEHICLE MANUFACTURER'S RATING OR:

Hitch Type	Max Gross Trailer Weight	Max Tongue Weight
Weight Carrying	2000 lb. (908 kg)	200 lb. (90.8 kg)
Weight Distributing	X	X



Hitch Illustration



Always wear SAFETY GLASSES when installing hitch

Installation Instructions

PART NUMBERS: 24925, 60362, 77313

Drawbar Kit:

3593

Drawbar must be used in the **RISE** position only.

Fastener Kit: 24925F

Wiring Access Location: PC 3, 4

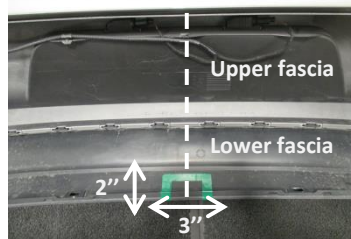


Figure 3

①	Qty. (2)	Carriage bolt ½-13 x 2.00 GR5	
②	Qty. (2)	Spacer .250 x 1 x3	
③	Qty. (2)	Conical washer ½"	
④	Qty. (2)	Hex Nut ½ -13 GR2	
⑤	Qty. (4)	Bolt M8x1.25x40 CL8.8	
⑥	Qty. (4)	Spacer (round hole) .250 x 1 x1.5	
⑦	Qty. (4)	Conical washer 3/8"	
⑧	Qty. (2)	Fish wire ½-13	

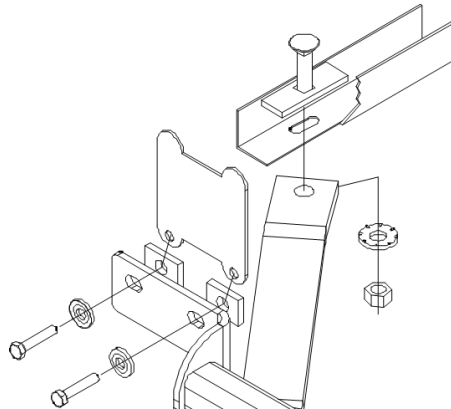


Figure 1

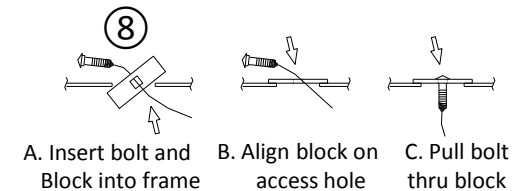
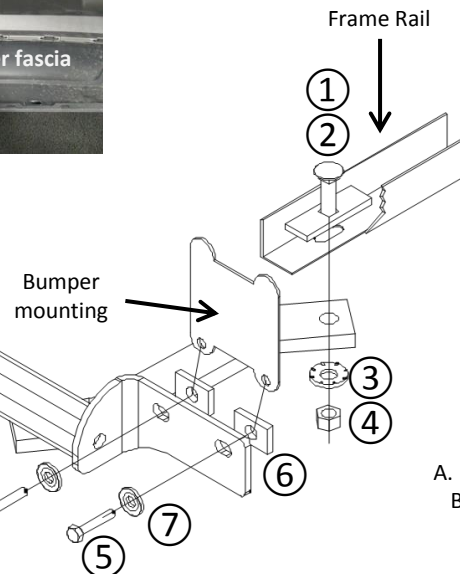


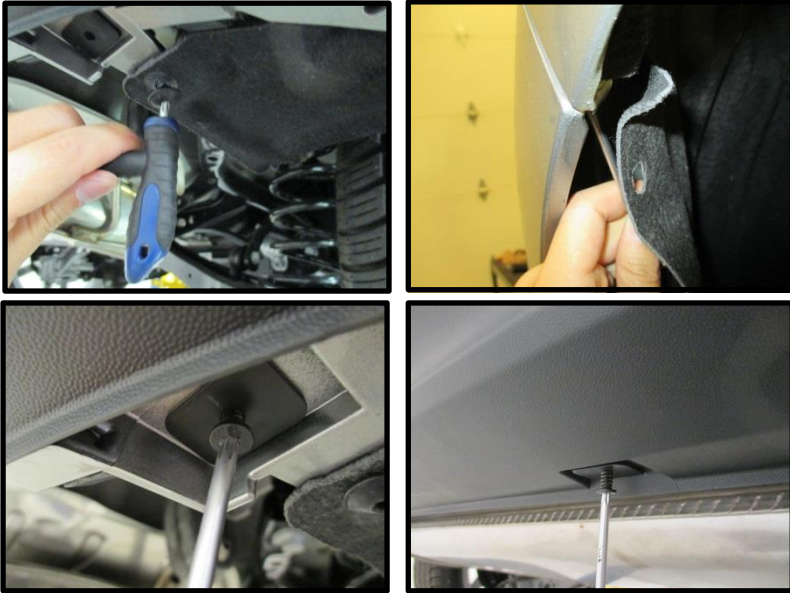
Figure 2

- Remove bumper fascia - remove (5) screws (each side) from bumper fascia, (4) plastic screws and (4) tabs at the bottom of fascia. Open the trunk and pull back the weather seal. Use plastic trim tools to loosen the fascia tab on both sides and disconnect electrical connector on the passenger side. Gently pull the fascia away from the car.
- Remove lower existing (4) M8 bolts from bumper mounting. Return to vehicle owner.
- Feed the carriage bolt ① and spacer ② through slots on bottom of frame rails using the pull wires ⑧, as shown in Figure 2. Leave pull wires attached.
- Tape (4) 1/4" spacers ⑥ on both side brackets (spacer hole aligning with hitch slots). Raise hitch into position, over the exhaust, and feed the pull wires previously installed through holes on the hitch bar. Remove pull wires and loosely install conical washer ③ and hex nut ④ to the hitch. Bend the heat shield if needed.
- Make sure hole on the block aligns with slots on bracket. Loosely install (4) M8 bolts ⑤ and (4) conical washers ⑦ into existing bumper mounting weldnuts.
- Tighten all M8 CL8.8 fasteners with torque wrench to 20 Lb.-Ft. (27 N*M) and all 1/2 GR5 fasteners with torque wrench to 75 Lb.-Ft. (102 N*M)**
- ⚠ Proper torque is needed to keep the hitch secure to the vehicle when towing.**
- Locate bottom center of lower fascia and trim 2" tall and 3" wide, as shown in Figure 3.
- Reinstall fascia and all fasteners removed in Step 1.

Note: check hitch frequently, making sure all fasteners and ball are properly tightened. If hitch is removed, plug all holes in trunk pan or other body panels to prevent entry of water and exhaust fumes. A hitch or ball which has been damaged should be removed and replaced. Observe safety precautions when working beneath a vehicle and wear eye protection. Do not cut access or attachment holes with a torch.

This product complies with safety specifications and requirements for connecting devices and towing systems of the state of New York, V.E.S.C. Regulation V-5 and SAE J684.

1a. Remove bumper fascia - remove (5) screws (each side) from bumper fascia, (4) plastic screws and (4) tabs at the bottom of fascia.



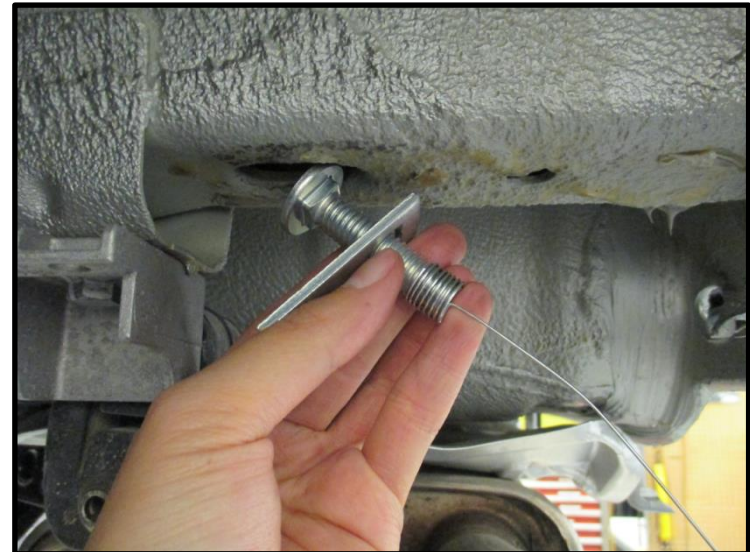
1b. Open the trunk and pull back the weather seal. Use plastic trim tools to loosen the fascia tab on both sides and disconnect electrical connector on the passenger side. Gently pull the fascia away from the car.



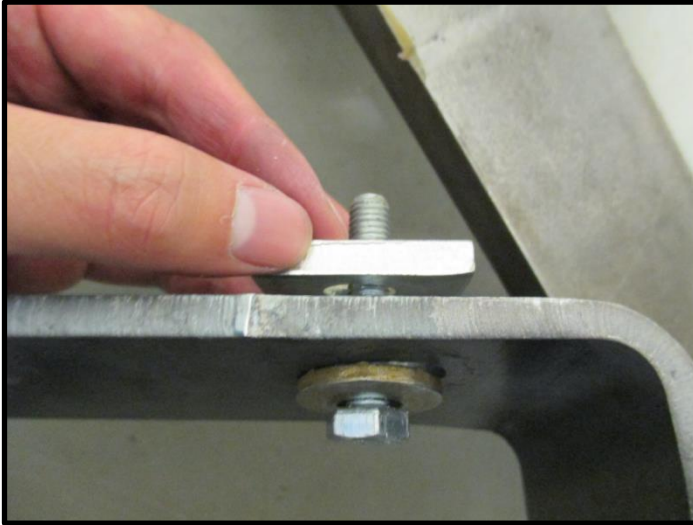
2. Remove lower existing (4) M8 bolts from bumper mounting.



3. Feed the carriage bolt ① and spacer ② through slots on bottom of frame rails using the pull wires ⑧. Leave pull wires attached.



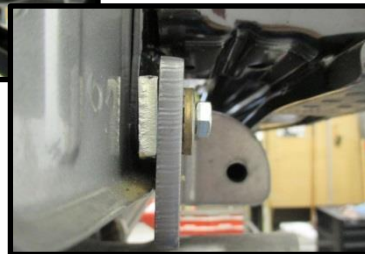
4a. Tape (4) 1/4" spacers (6) on both side brackets (spacer hole aligning with hitch slots).



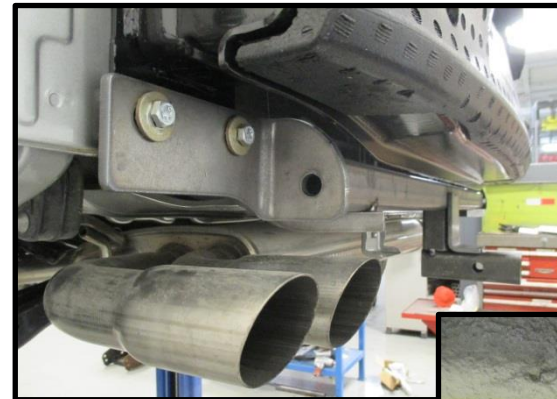
4b. Raise hitch into position, over the exhaust, and feed the pull wires previously installed through holes on the hitch bar. Remove pull wires and loosely install conical washer (3) and hex nut (4) to the hitch. Bend the heat shield if needed.



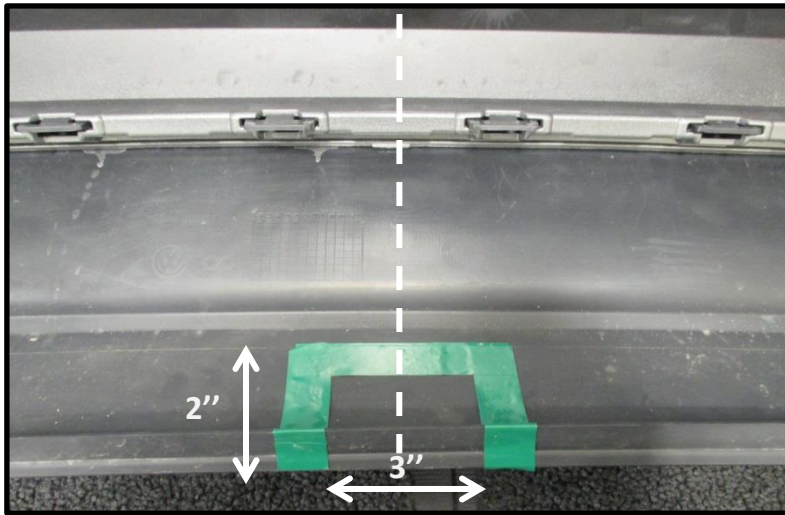
5. Make sure hole on the block aligns with slots on bracket. Loosely install (4) M8 bolts (5) and (4) conical washers (7) into existing bumper mounting weldnuts.



6. Tighten all M8 CL8.8 fasteners with torque wrench to 20 Lb.-Ft. (27 N*M) and all 1/2 GR5 fasteners with torque wrench to 75 Lb.-Ft. (102 N*M).



7. Locate bottom center of lower fascia and trim 2" tall and 3" wide.



8. Reinstall fascia and all fasteners removed in Step 1.

