

Installation Instructions

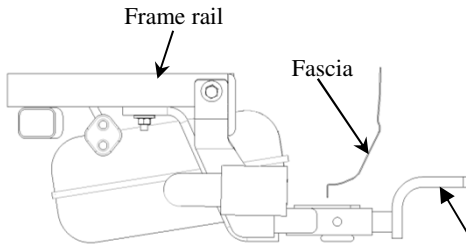
Mazda 3 5 Door

Part Numbers:

24914

60346

77301



Drawbar Kit:
3593

Drawbar must be used in the **RISE** position only.

**Do Not Exceed Lower of Towing Vehicle
Manufacturer's Rating or**

2000 LB (908 Kg) Max Gross Trailer Weight

200 LB (90.8 Kg) Max Tongue Weight

Accessory Rating

A

Wiring Access Location: PC3, 4

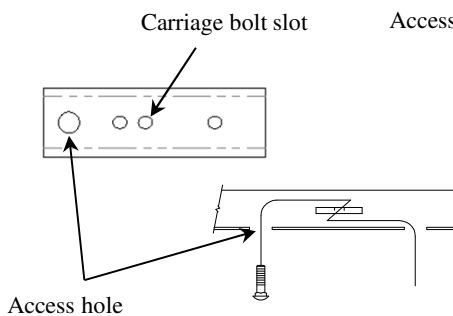
Hitch Shown In Proper Position

Equipment Required: Pullwire (provided), lubricant or soapy water, flashlight, & utility knife.

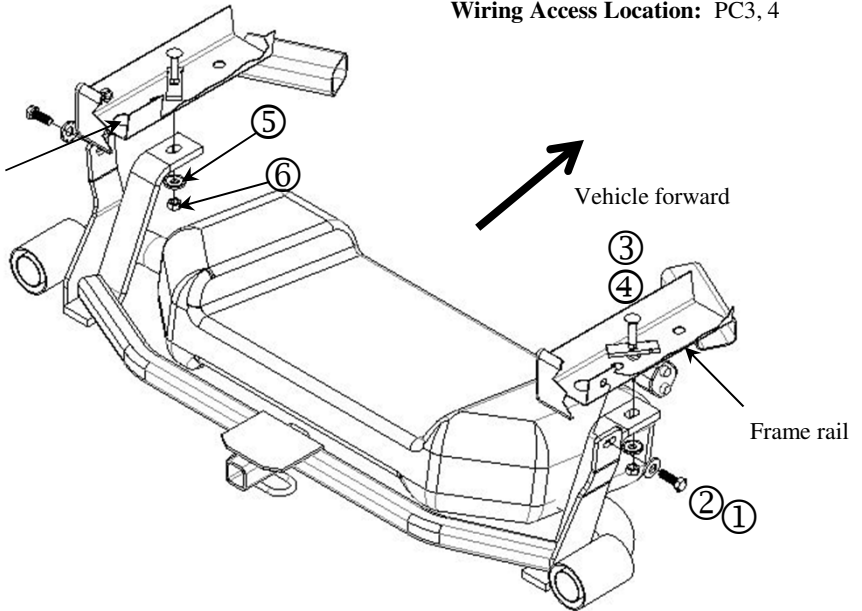
Fastener Kit: 24914F

Wrenches: 11/16", & 19mm

Drill Bits: None



Kink pull wire to keep spacer independent of bolt



Note: sort hardware prior to hitch installation to confirm conical washer are kept with coordinated with bolts.

Note: Fasteners typical both sides

①	Qty. (2)	Hex bolt M12 X 1.25 X 30 CL8.8	④	Qty. (2)	Spacer .250 X .875 X 3.00
②	Qty. (2)	Conical washer 1/2"	⑤	Qty. (2)	Conical washer 7/16"
③	Qty. (2)	Carriage bolt 7/16-14 X 14 X 1.75 GR5	⑥	Qty. (2)	Hex nut 7/16-14

1. Locate rear weldnut on the outside of the frame rails above the access hole. Using the utility knife remove tape covering weldnut and check threads by running the M12 hex bolt into, then removing hex bolt.
2. Feed spacers and carriage bolts into position using the pull wires provided into each frame rail (middle slot as shown). Leave pull wire attached. Note: It is much easier if bolt and spacer are not engaged while inserting them into frame, refer to illustration.
3. Lower exhaust system at the rubber isolator (4). Spraying a lubricant or soapy water on the metal hanger rod and the rubber isolator helps with removal. Do not let the exhaust drop, support the exhaust during installation.
4. Raise hitch into position (feed pull wires through the slots on the bars), sliding the hitch through the exhaust cutouts on the fascia and into position. Remove the pull wires and attach the 7/16" conical and hex nut loosely to hitch for support.
5. Install the 1/2" conical and M12 bolt into the existing weldnut.
6. Raise exhaust back into position using an lubricant or soapy water.
7. Torque all fasteners to specifications shown below.

Cequent



Tighten all M12 CL8.8 fasteners with torque wrench to 68 Lb.-Ft. (92 N*M)
Tighten all 7/16-14 GR5 fasteners with torque wrench to 50 Lb.-Ft. (68 N*M)