



Installation Instructions

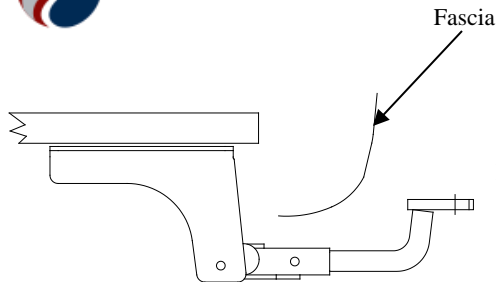
Part Numbers:

Mazda 6

24908

60339

77295



Drawbar Kit:
3594

Drawbar must be used in the **RISE** position only.

**Do Not Exceed Lower of Towing Vehicle
Manufacturer's Rating or**

2000 LB (908 Kg) Max Gross Trailer Weight

200 LB (90.8 Kg) Max Tongue Weight

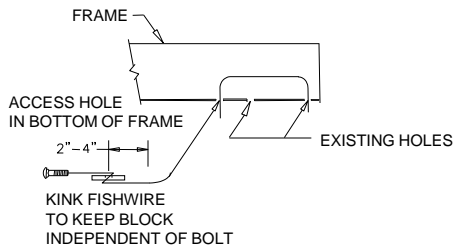
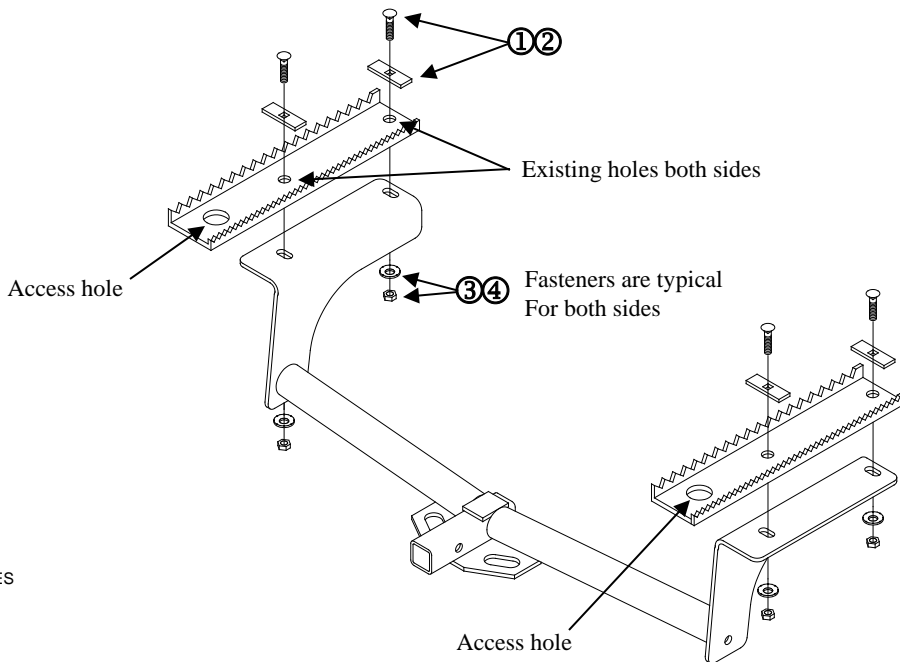
Hitch Shown In Proper Position

Equipment Required: Fish wire (provided)

Fastener Kit: 24908F

Wrenches: 3/4"

Wiring Access Location: PC3, PC4



EXAMPLE OF FISHWIRE PROCEDURE

①	Qty. (4)	Carriage bolt -1/2-13X1.75 GR5	③	Qty. (4)	NUT - 1/2-13 GR2
②	Qty. (4)	BLOCK .250 x 1.00 x 3.00	④	Qty. (4)	WASHER CONICAL- 1/2

1. Raise car on ramps or hoist.
2. Fish wire the frame rail fasteners into place through the access hole shown above. Leave the fish wires attached.
3. Raising hitch into position, routing fish wires thru hitch holes, being careful not to push fasteners back into the frame.
4. Remove the fish wires, install the remaining fasteners as shown above and tighten to spec.

Tighten all 1/2" fasteners with torque wrench to 75 Lb.-Ft.(101 n*m)

▲ Proper torque is needed to keep the hitch secure to the vehicle when towing.