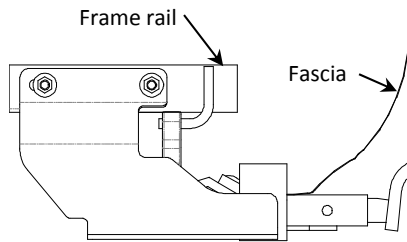


Installation Instructions

Part Numbers:

Nissan Juke Front Wheel Drive

24892
60311
77280



Drawbar Kit:
3593

Drawbar must be used in the **RISE** position only.

**Do Not Exceed Lower of Towing Vehicle
Manufacturer's Rating or**

2000 LB (908 Kg) Max Gross Trailer Weight
200 LB (90.8 Kg) Max Tongue Weight

Accessory Rating

B

Hitch Shown In Proper Position

Equipment Required: Pull wires (provided),
lubricant or soapy water.

Fastener Kit: 24892F

Wrenches: 3/4

Drill Bits: 1/2

Wiring Access Location:

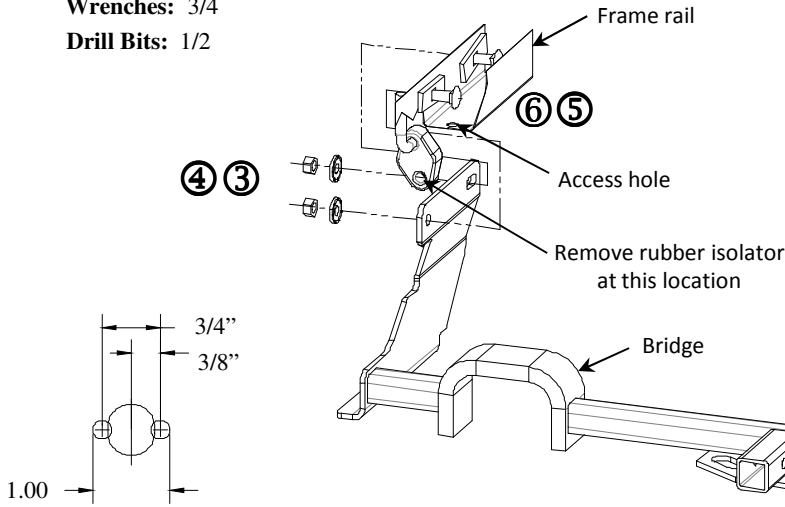


Figure 1.

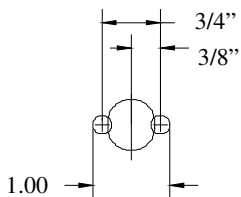
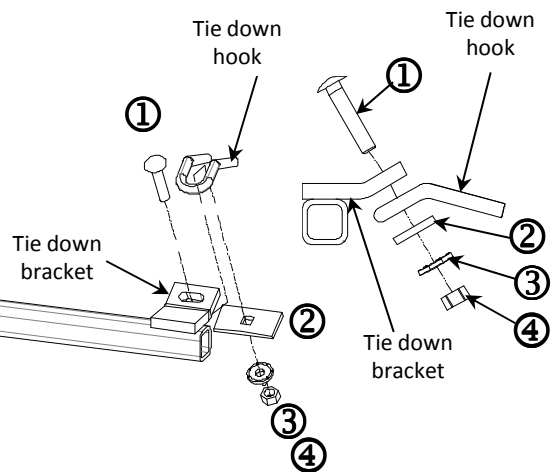


Figure 2.

Access hole modification to allow
for block and carriage bolt.



①	Qty. (1)	Carriage bolt 1/2-13 X 2.50 GR5	④	Qty. (3)	Hex nut 1/2-13
②	Qty. (1)	Spacer 1/4" X 1.50 X 3.00	⑤	Qty. (2)	Carriage bolt 1/2-13 X 1.75 GR 5
③	Qty. (3)	Conical washer	⑥	Qty. (2)	Spacers 1/4" X 1.00 X 3.00

Note: sort hardware prior to hitch installation to confirm bolt lengths are installed in proper locations.

1. Lower exhaust by removing rubber isolators from muffler hangers. Spraying a lubricant or soapy water on the metal hanger rod and the rubber isolator helps removal.
2. Enlarge access hole to allow for block and carriage bolt use 1/2" drill bits (See Figure 2.) or use a die grinder to enlarge the access hole in bottom of frame rail. See Figure 2. Paint any bare metal.
3. Feed pull wires with spacer and bolt (item 5 & 6) into frame rail thru enlarge access hole and out the attachment holes. Leave pull wires attached.
4. Raise hitch into position with bridge over tailpipe and tie down bracket over tie down hook. Feed pull wires thru holes on hitch bracket and continue to pull fasteners through frame rail and adjacent holes in brackets. Carefully remove pull wires and attach conical washers and nut finger tight only (Be careful not to push fastener back into frame rail).
5. Install 1/2-13 x 2.50 carriage bolt into tie down bracket slot, thru tie down hook and attach spacer, conical washer and nut finger tight only.
6. Reinstall muffler .
7. Torque all fasteners to specifications shown below.
8. Paint any exposed metal.

Tighten all 1/2-13 GR 5 fasteners with torque wrench to 75 Lb.-Ft. (102 N*M)