

Installation Instructions

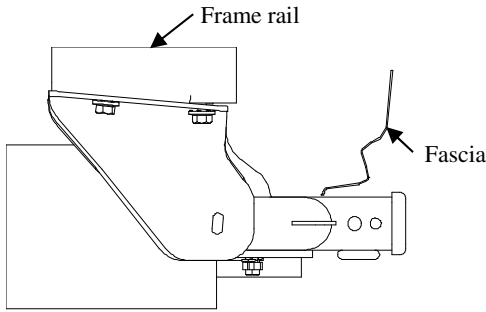
Honda CR-V

Part Numbers:

75742

87621

44675

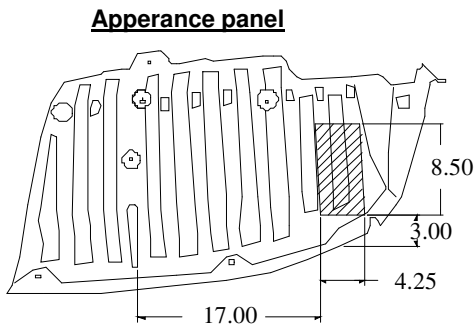


Hitch Shown In Proper Position

Equipment Required: Tape, Utility Knife, Tape Measure & Marking Pencil, Lubricant or Soapy water

Fastener Kit: 75742F

Wrenches: 10mm, 17mm, 11/16, Small Phillips head Screwdriver,

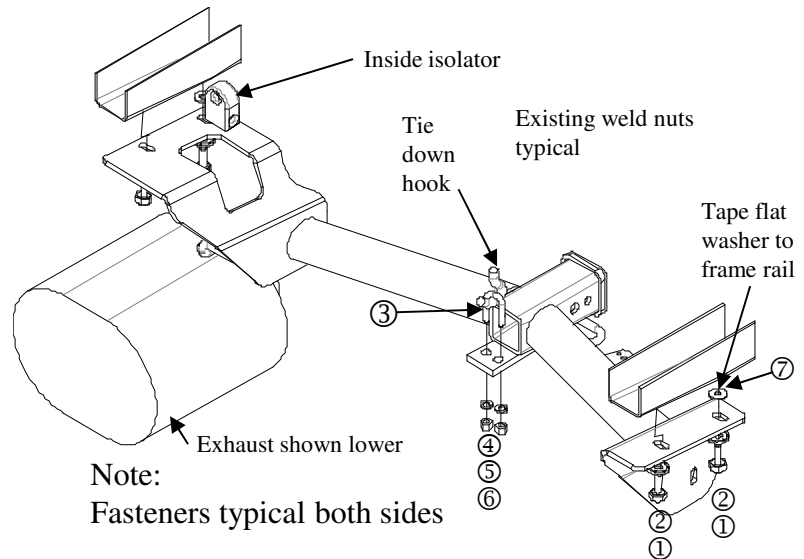


Area to be Trimmed

Do Not Exceed Lower of Towing Vehicle Manufacturer's Rating or

Hitch type	Max Gross Trailer WT (LB)	Max Tongue WT (LB)
Weight Distributing	Not For Use With Spring Bars	
Weight Carrying Ball Mount	3500 (1589 Kg)	525 (239 Kg)

Wiring Access Location: SUV3



Note:
Fasteners typical both sides

①	Qty. (4)	Hex Bolt M10X1.25X30 CL8.8	⑤	Qty. (2)	Lock Washer
②	Qty. (4)	Conical Washers	⑥	Qty. (2)	3/8 Hex Nut
③	Qty. (1)	3/8-16 U-Bolt	⑦	Qty. (2)	Flat washer 1/2"
④	Qty. (2)	Flat Washer 3/8"			

- Remove the appearance panel on driver's side, remove 5-plastic rivets, 3-hex nuts, 2 Phillips head screws located in wheel well behind the driver's side rear tire. This panel will need to be trimmed or not reinstalled on vehicle. Ask vehicle owner their choice before starting installation.
- Run the (item 1) into existing weld nuts to clear the threads.
- Reinstall appearance panel if trimmed.
- Lower exhaust by removing rubber isolators from muffler hangers. Remove the outside isolator first then the inside isolator. Spraying a lubricant or soapy water on the metal hanger rod and the rubber isolator helps removal.
- Tape (item 7) flat washer to rearward weld nut location on both frame rails.
- Raise hitch into position.
- Install M10 fasteners as shown.
- Install the 3/8 U-Bolt through the vehicle tie down hook and through the tie down hook attachment of the receiver. Install flat washer, lock washers and 3/8 hex nuts as shown above.
- Tighten all fasteners to the required torque specification.
- Raise exhaust back into position and re-install rubber isolators.

Tighten all 3/8-16 GR5 fasteners with torque wrench to 30 Lb.-Ft. (41 N*M)

Tighten all M10 CL8.8 fasteners with torque wrench to 38 Lb.-Ft. (52 N*M)

Note: check hitch frequently, making sure all fasteners and ball are properly tightened. If hitch is removed, plug all holes in trunk pan or other body panels to prevent entry of water and exhaust fumes. A hitch or ball which has been damaged should be removed and replaced. Observe safety precautions when working beneath a vehicle and wear eye protection. Do not cut access or attachment holes with a torch.