

Installation Instructions

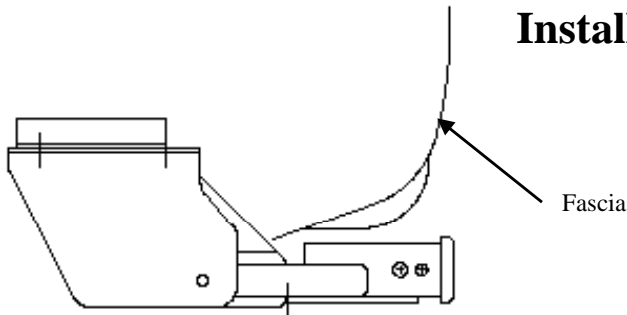
Honda CR-V

Part Numbers:

75690

44643

87578



Hitch Shown In Proper Position

Equipment Required: Pull Wire (Provided)

Fastener Kit: 75690F

Wrenches: 11/16", 7/8"

Drill Bits: None

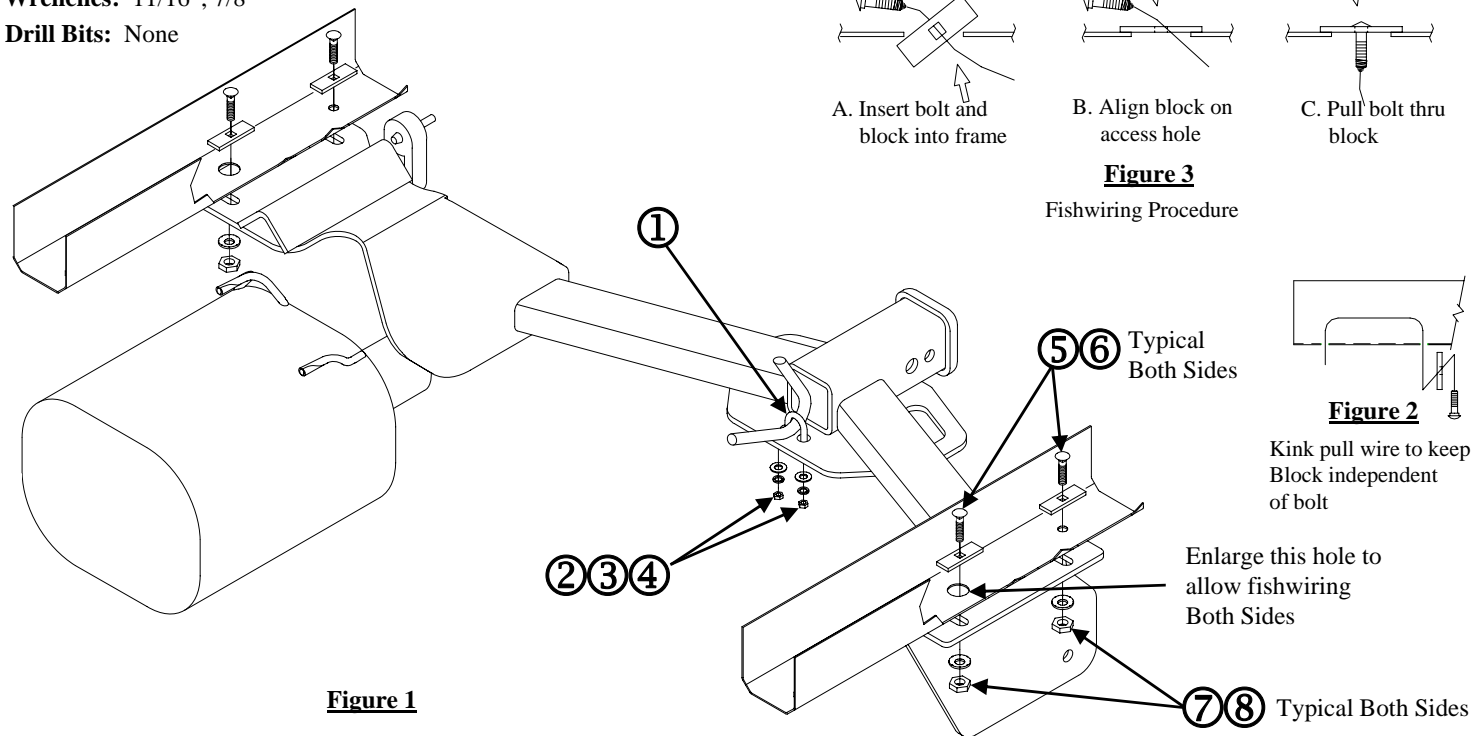
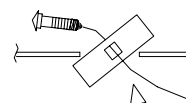


Figure 1

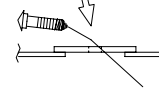
**Do Not Exceed Lower of Towing Vehicle
Manufacturer's Rating or**

Hitch type	Max Gross Trailer WT (LB)	Max Tongue WT (LB)
Weight Distributing	Do Not Use With Spring Bars	
Weight Carrying Ball Mount	3,500 (1589 Kg.)	350 (159 Kg.)

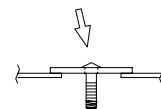
Wiring Access Location: SUV3



A. Insert bolt and block into frame



B. Align block on access hole



C. Pull bolt thru block

Figure 3

Fishwiring Procedure

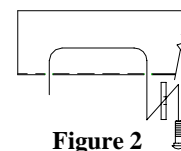


Figure 2

Kink pull wire to keep Block independent of bolt

①	Qty. (1)	U-Bolt 3/8-16	⑤	Qty. (4)	Carriage Bolt 1/2-13 x 1.25 GR5
②	Qty. (2)	Flat Washer 3/8"	⑥	Qty. (4)	Spacer Block 1/4 X 1 X 3
③	Qty. (2)	Lock Washer 3/8"	⑦	Qty. (4)	Conical Toothed Washer 1/2"
④	Qty. (2)	Hex Nut 3/8-16	⑧	Qty. (4)	Hex Nut 1/2-13

- Lower exhaust by disconnecting rubber exhaust hangers from exhaust, two places rear of muffler and one place forward of muffler, near rear axle. Bend the exhaust hanger pins to lower exhaust 1/2".
Note: Rubber exhaust hanger must be attached to hanger rod welded on vehicle frame before hitch is installed. Hitch side bracket will prevent access to hanger rod after installation. Therefore, it is recommended to remove rubber exhaust hanger from muffler end instead.
- If necessary, enlarge forward access hole, each side, to allow fishwiring of carriage bolt and spacer block.
- Fishwire 1/2-13 carriage bolt and spacer block through access holes and down through rearward hole, both sides of vehicle.
- Fishwire 1/2-13 carriage bolt and spacer block through access hole and back down through same hole (see figure 2)
- Raise hitch into position, being careful not to push fasteners back into frame. Loosely install conical toothed washers and nuts.
- Center hitch on vehicle and install U-Bolt as shown in Figure 1. Install flat washers, lock washers and nuts onto U-Bolt.
- Tighten all fasteners to torque specs below.
- Raise exhaust back into position and re-attach rubber exhaust hangers, 3 places, as removed in step 1

Tighten all 1/2-13 GR5 fasteners with torque wrench to 75 Lb.-Ft. (102 N*M)

Tighten all 3/8-16 GR5 fasteners with torque wrench to 30 Lb.-Ft. (41 N*M)

Note: check hitch frequently, making sure all fasteners and ball are properly tightened. If hitch is removed, plug all holes in trunk pan or other body panels to prevent entry of water and exhaust fumes. A hitch or ball which has been damaged should be removed and replaced. Observe safety precautions when working beneath a vehicle and wear eye protection. Do not cut access or attachment holes with a torch.