

Installation Instructions

Subaru Forester

Part Numbers:

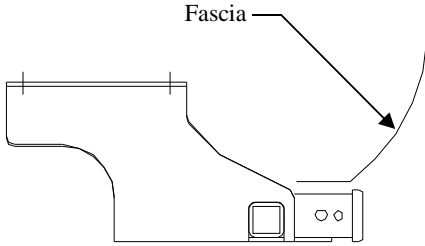
75650

87493

44607

**Do Not Exceed Lower of Towing Vehicle
Manufacturer's Rating or**

Hitch type	Max Gross Trailer WT (LB)	Max Tongue WT (LB)
Weight Distributing	Not For Use With Spring Bars	
Weight Carrying Ball Mount	4000 (1815 Kg)	600 (272 Kg)



Hitch Shown In Proper Position

Equipment Required: Metal File

Fastener Kit: 75650F

Wrenches: 3/4", 10mm

Drill Bits: 1/2", 3/8"

Wiring Access Location: SUV8

Remove plastic plugs
From existing holes
Both sides

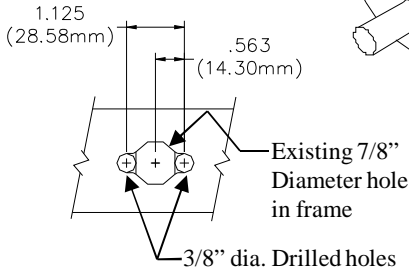


Figure 2

Access hole modification to allow
fishwiring of block and carriage bolt

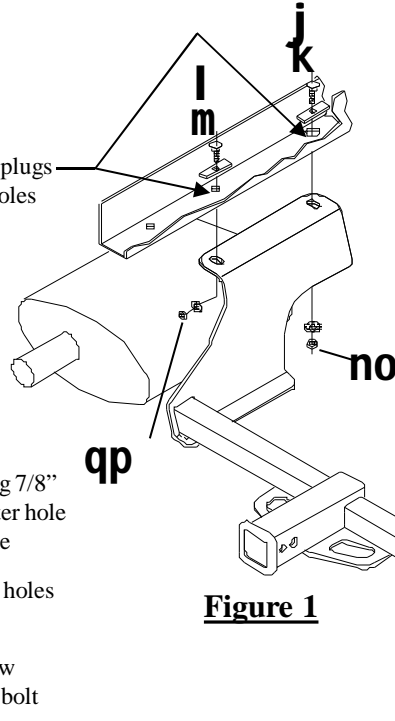


Figure 1

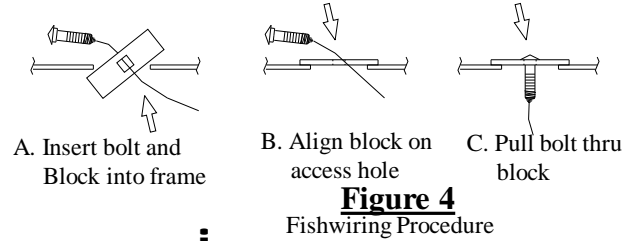


Figure 4

Fishwiring Procedure

Modify this hole - both
sides to allow fishwiring-
See figure 2

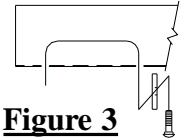


Figure 3

Kink pull wire to keep
Spacer independent of bolt

j	Qty. (2)	Carriage Bolt – 1/2-13 x 1.75 GR5	o	Qty. (2)	Hex Nut – 1/2-13
k	Qty. (2)	Spacer—1/4 x 1 x 3 (Square hole for 1/2" Carriage Bolt)	p	Qty. (2)	Conical Washer – 7/16"
l	Qty. (2)	Carriage Bolt – 7/16-14 X 1.75 GR5	q	Qty. (2)	Hex Nut – 7/16-14
m	Qty. (2)	Spacer—1/4 x 1 x 3 (Square hole for 7/16" Carriage Bolt)	r	Qty. (2)	Pull wire – 1/2"
n	Qty. (2)	Conical Washer – 1/2"	s	Qty. (2)	Pull wire – 7/16"

- Lower exhaust by disconnecting (5) rubber exhaust hangers from hanger brackets.
- Remove forwardmost heat shield screw from each frame rail and discard.
Note: When hitch is installed, heat shield will be sandwiched between frame rail and hitch
- Remove (2) plastic plugs from existing holes in each frame rail as shown above in Figure 1 and discard.
- Use 3/8" drill and file to modify forwardmost hole in each frame rail, as shown in Figure 2, to allow fishwiring of spacers and carriage bolts.
- Fishwire spacer and 7/16" carriage bolt thru access hole modified in Step 4 and down thru center hole in each frame rail (see figure 3). Insert remaining blocks and 1/2" carriage bolts into access holes and drop back down thru holes, making sure blocks span both sides of hole (see Figure 4).
- Raise hitch into position, being careful not to push fasteners into frame, and secure with conical washers and nuts.
Tighten 1/2-13 GR5 fasteners to 75 lb.-ft. (102 N*M)
Tighten 7/16-14 GR5 fasteners to 50 lb.-ft. (68 N*M)
- Raise exhaust back into position and reattach exhaust hangers disconnected in step 1.

Note: check hitch frequently, making sure all fasteners and ball are properly tightened. If hitch is removed, plug all holes in trunk pan or other body panels to prevent entry of water and exhaust fumes. A hitch or ball which has been damaged should be removed and replaced. Observe safety precautions when working beneath a vehicle and wear eye protection. Do not cut access or attachment holes with a torch.