

# Installation Instructions

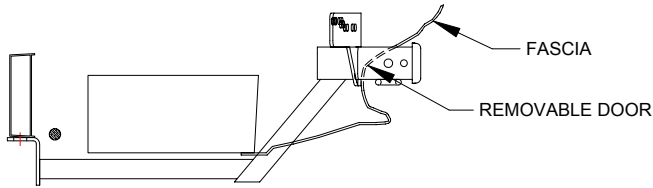
## BMW X5

Part Numbers:

**75492**

**87405**

**44178**



### Hitch Shown In Proper Position

**Do Not Exceed Lower of Towing Vehicle  
Manufacturer's Rating or**

Hitch type	Max Gross Trailer WT (LB)	Max Tongue WT (LB)
Weight Distributing	<b>6000 (2724 Kg)</b>	<b>600 (272 Kg)</b>
Weight Carrying Ball Mount	<b>6000 (2724 Kg)</b>	<b>600 (272 Kg)</b>

**Wiring Access Location: SEE AUTO DEALER**

### Equipment Required:

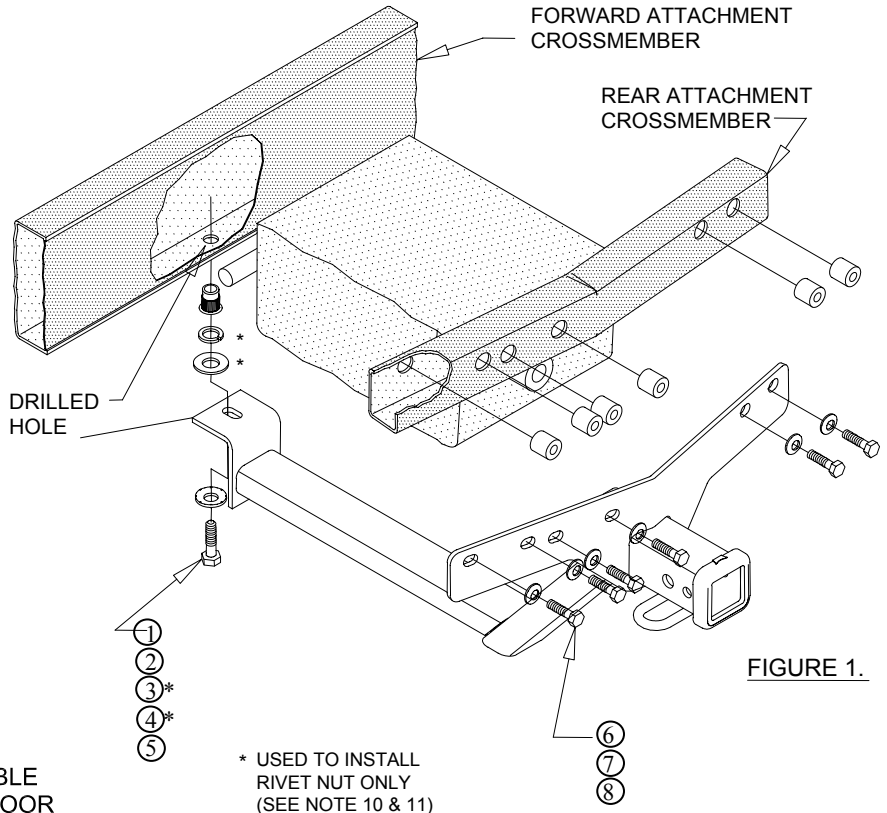
**Fastener Kit:** 75492F

**Wrenches:** 8mm, 13mm, 17mm, T50, T55, 3/4

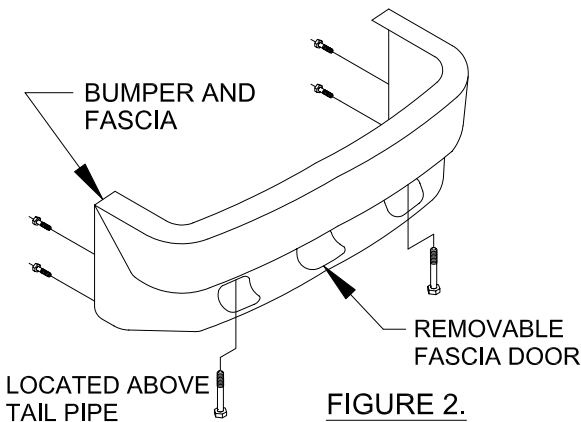
**Drill Bits:** 1/2", 11/16"

**UTILITY KNIFE**

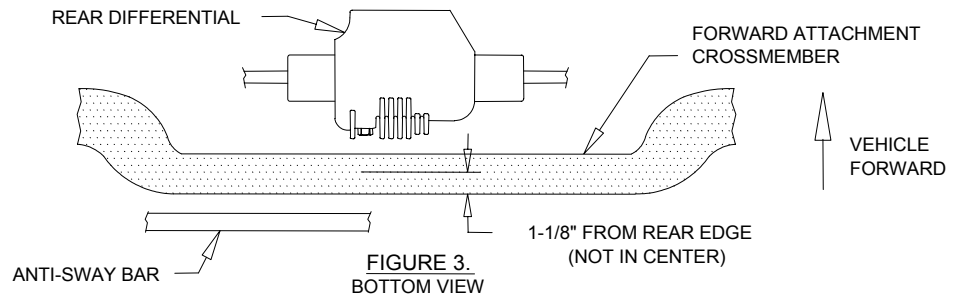
**REQUIRES REMOVAL OR TRIMMING OF FASCIA DOOR**



**FIGURE 1.**



**FIGURE 2.**



**FIGURE 3.  
BOTTOM VIEW**

Note: check hitch frequently, making sure all fasteners and ball are properly tightened. If hitch is removed, plug all holes in trunk pan or other body panels to prevent entry of water and exhaust fumes. A hitch or ball which has been damaged should be removed and replaced. Observe safety precautions when working beneath a vehicle and wear eye protection. Do not cut access or attachment holes with a torch.

# Installation Instructions

## BMW X5

Part Numbers:

75492

87405

44178

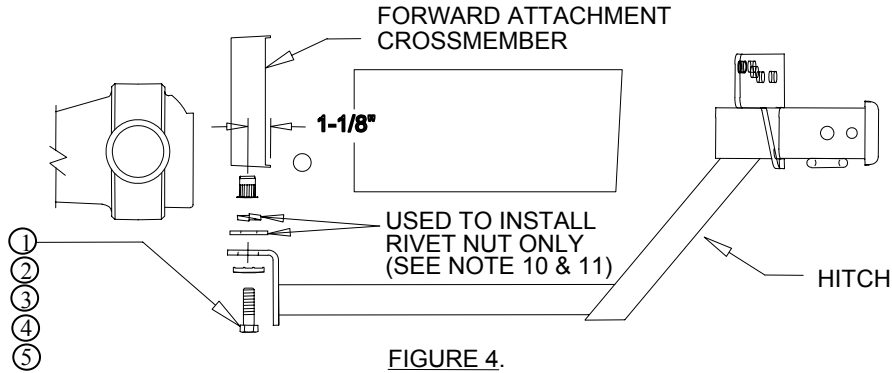


FIGURE 4.

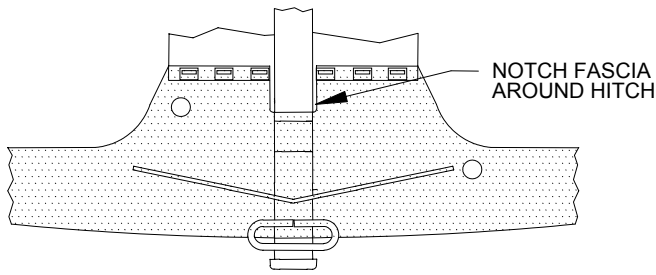


FIGURE 5.  
BOTTOM VIEW

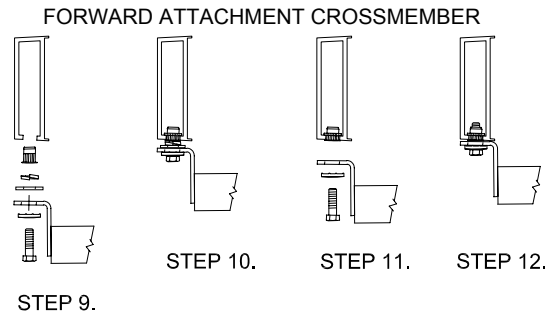


FIGURE 6.

①	Qty. (1)	Hex Bolt 1/2"-13 x 1.75 grade 5	⑥	Qty. (6)	Hex Bolt M10x1.50 x 50mm CL8.8
②	Qty. (1)	Conical Tooth Washer 1/2"	⑦	Qty. (6)	Conical Tooth Washer 3/8"
③	Qty. (1)	Flat Washer 1/2"	⑧	Qty. (6)	Spacer
④	Qty. (1)	Lock Washer 1/2"	⑨	Qty. ( )	
⑤	Qty. (1)	Rivet Nut 1/2"	⑩	Qty. ( )	

1. REMOVE BUMPER AND FASCIA BY REMOVING THE SIX (6) FASTENERS AS SHOWN IN FIGURE 2.
2. REMOVE THE SIX (6) EXISTING M10 FASTENERS FROM THE REAR ATTACHMENT CROSSMEMBER AND RETURN TO VEHICLE OWNER.
3. MEASURE 1-1/8" FORWARD FROM THE REAR EDGE OF THE FORWARD ATTACHMENT CROSSMEMBER AND MARK A LINE NEAR THE CENTER AS SHOWN IN FIGURE 3. (LINE IS NOT CENTERED ON CROSSMEMBER)
4. RAISE HITCH INTO POSITION AND INSTALL THE TWO (2) OUTER M10 FASTENERS FINGER TIGHT. DO NOT TORQUE M10 FASTENERS AT THIS TIME.
5. USING THE HITCH AS A TEMPLATE, DRILL A 1/2" HOLE IN BOTTOM OF CROSSMEMBER ON LINE MARKED IN STEP 3.
6. REMOVE THE TWO (2) M10 BOLTS AND **TEMPORARILY** LOWER HITCH FOR DRILL ACCESS.
7. OPEN UP THE 1/2" HOLE DRILLED IN CROSSMEMBER WITH AN 11/16" DRILL BIT.
8. RAISE HITCH BACK INTO POSITION AND **LOOSELY** INSTALL THE SIX (6) M10 FASTENERS AS SHOWN IN FIGURE 1.
9. LOOSELY INSTALL FASTENERS FOR FORWARD ATTACHMENT AS SHOWN IN FIGURES 1 & 4.
10. TO INSTALL RIVET NUT IN CROSSMEMBER, HOLD HITCH TIGHT AGAINST CROSSMEMBER WHILE TIGHTENING THE 1/2-13 HEX BOLT TO 45 LB-FT. (THIS WILL SEAT THE RIVET NUT - SEE FIGURE 6)
11. LOOSEN 1/2-13 HEX BOLT AND **REMOVE** THE FLAT WASHER AND HELICAL LOCK WASHER WHICH ARE ONLY USED TO INSTALL RIVET NUT.
12. REINSTALL 1/2-13 HEX BOLT AND CONICAL TOOTHED WASHER. TIGHTEN ALL FASTENERS TO SPECIFIED TORQUE.
13. REATTACH BUMPER AND FASCIA. THE FASCIA REQUIRES TRIMMING AROUND HITCH AS SHOWN IN FIGURE 5.

### NOTES:

THE FASCIA DOOR CAN BE RETURNED TO THE VEHICLE OWNER OR TRIMMED PER THE TEMPLATE AND REINSTALLED. GET VEHICLE OWNER APPROVAL BEFORE TRIMMING FASCIA DOOR.

Tighten all M10 class 8.8 fasteners with torque wrench to 38 Lb.-Ft. (52 n\*m)

Tighten all 1/2-13 fasteners with torque wrench to 75 Lb.-Ft. (102 n\*m)

Note: check hitch frequently, making sure all fasteners and ball are properly tightened. If hitch is removed, plug all holes in trunk pan or other body panels to prevent entry of water and exhaust fumes. A hitch or ball which has been damaged should be removed and replaced. Observe safety precautions when working beneath a vehicle and wear eye protection. Do not cut access or attachment holes with a torch.

# Installation Instructions

BMW X5

## TEMPLATE

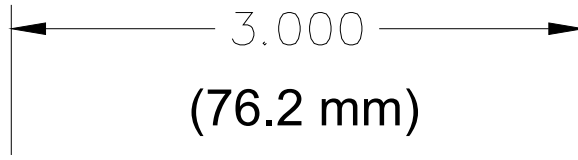
Part Numbers:

75492

87405

44178

TOP  
DESSUS, TAPA



•MEASURE DIMENSION TO CHECK  
FOR PROPER SCALE

CUT OUT  
THIS AREA

BOTTOM OF DOOR

\*\*THIS TEMPLATE IS FULL SCALE  
DO NOT REDUCE SIZE

CENTER LINE OF DOOR

Note: check hitch frequently, making sure all fasteners and ball are properly tightened. If hitch is removed, plug all holes in trunk pan or other body panels to prevent entry of water and exhaust fumes. A hitch or ball which has been damaged should be removed and replaced. Observe safety precautions when working beneath a vehicle and wear eye protection. Do not cut access or attachment holes with a torch.