

INSTALLATION INSTRUCTION

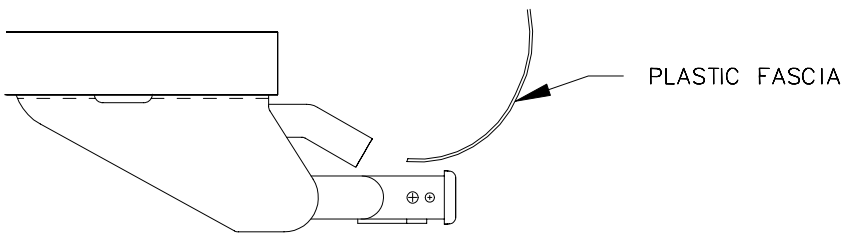
CHRYSLER TOWN & COUNTRY
 DODGE CARAVAN
 PLYMOUTH VOYAGER
 (FITS ALL MODELS 2WD, 4WD,
 SHORT, & LONG WHEELBASE)

HITCH NO.
 75119
 33045
 78214 U-Haul

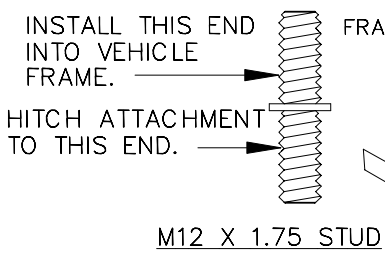
EQUIPMENT REQUIRED:
 WIRING ACCESS LOCATION: SUV1 & SUV2
 DRILL BITS: 7/16
 HITCH REQUIRES 5/8" PIN AND CLIP IF STABILIZING PIN IS NOT INSTALLED.
 WRENCHES: (TIGHTEN ALL FASTENERS WITH TORQUE WRENCH) 15mm, 17mm, 18mm, 19mm, 7/8

DO NOT EXCEED LOWER OF TOWING VEHICLE MFR'S RATINGS OR

HITCH TYPE	MAX GROSS TRLR WT(LB)	MAX TONGUE WT(LB)
WEIGHT DISTRIBUTING	5000	500
WEIGHT CARRYING BALL MOUNT	3500	350



HITCH SHOWN IN PROPER POSITION



- 7/16-14 X 1-3/4 GR5 CARRIAGE BOLT
- 1/4 X 1 X 3 BLOCK (3732)
- CONICAL TOOTHED WASHER
- NUT
- TYPICAL BOTH SIDES
- STUD (8325)
- 3/16 X 1 1/2 X 2 BLOCK (4833-001)
- LOCK WASHER
- NUT

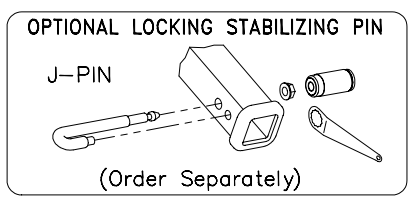
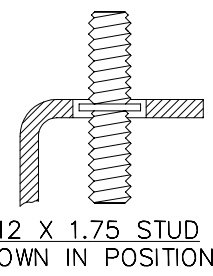
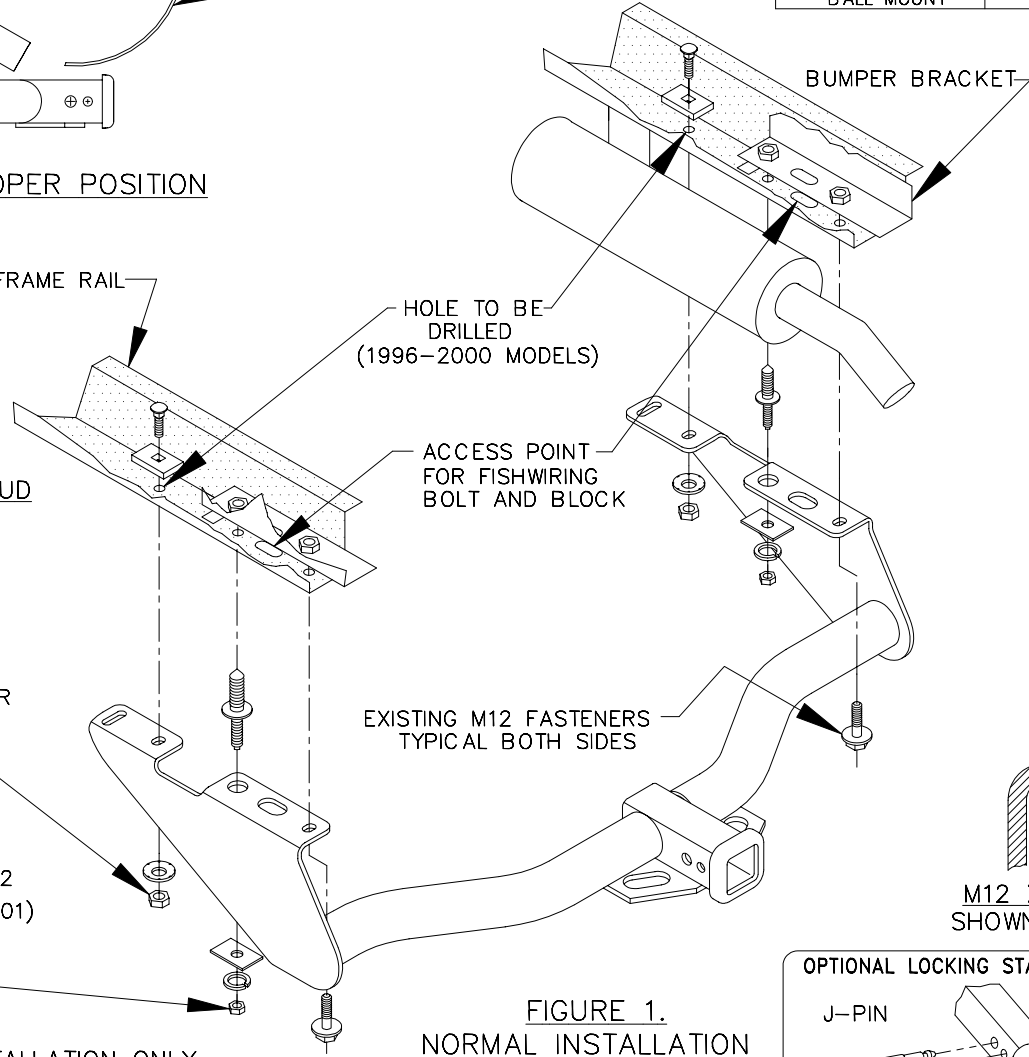


FIGURE 1. NORMAL INSTALLATION

NOTE: FOR NORMAL INSTALLATION ONLY.

IF VEHICLE HAS REAR STABILIZER BAR AND IS A SHORT WHEELBASE VEHICLE, SEE SHEET TWO.

1. REMOVE ONLY THE FRONT BUMPER BOLTS - BOTH SIDES.
2. INSTALL THE M12 X 1.75 STUD INTO POSITION, UNTIL SEATED TO FRAME, WHERE BUMPER BOLT WAS REMOVED - BOTH SIDES. FINAL TIGHTENING WILL OCCUR WHEN NUTS ARE TIGHTENED.
3. REMOVE REAR BUMPER BOLTS AND PLACE HITCH INTO POSITION AS SHOWN.
4. USING THE HITCH AS A TEMPLATE, DRILL A 7/16" HOLE IN EACH FRAME RAIL FOR THE FORWARD ATTACHMENT, SEE FIGURE 1 FOR HOLE LOCATION.
5. FISHWIRE 7/16" BOLTS & BLOCKS THROUGH THE OVAL HOLE ON SIDE BRACKETS.
 TIGHTEN 7/16 GR5 FASTENERS TO 50 LB.-FT.
 TIGHTEN M12 FASTENERS TO 75 LB.-FT.

APPROX WEIGHT (LB.)	FASTENER KIT
45	F75119

NOTE: Check hitch frequently, making sure all fasteners and ball are properly tightened. If hitch is removed, plug all holes in trunk pan or other body panels to prevent entry of water and exhaust fumes. A hitch or ball which has been damaged should be removed and replaced. Observe safety precautions when working beneath a vehicle and wear eye protection. Follow car maker's specs for maximum trailer weight and tongue weight. Do not cut access or attachment holes with a torch.

INSTALLATION INSTRUCTIONS

VEHICLE

HITCH NO.

75119
33045

78214 U-Haul

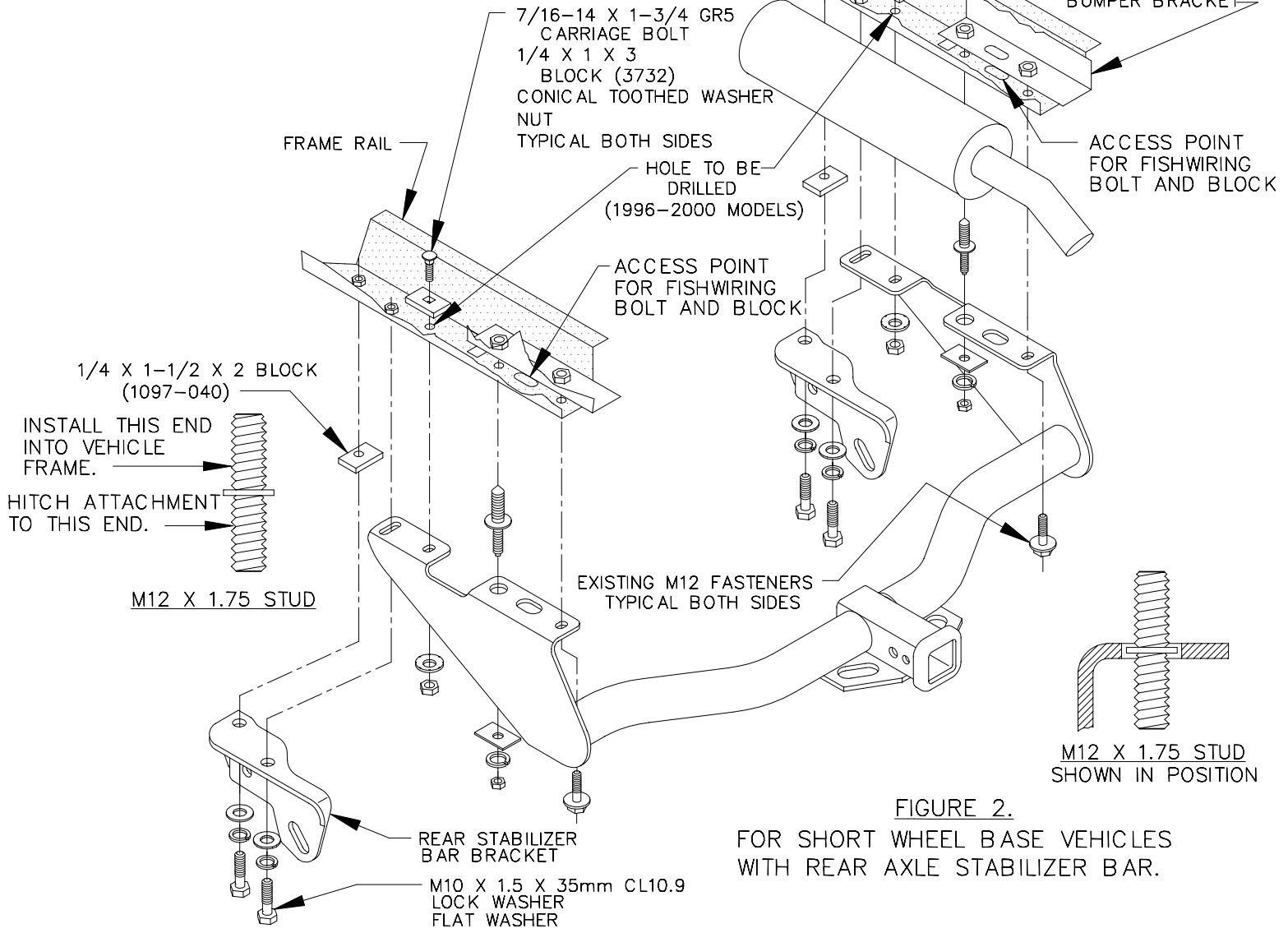


FIGURE 2.

FOR SHORT WHEEL BASE VEHICLES WITH REAR AXLE STABILIZER BAR.

NOTE: FOR SHORT WHEEL BASE VEHICLES WITH REAR AXLE STABILIZER BAR ONLY.

IF VEHICLE IS LONG WHEEL BASE OR DOES NOT HAVE STABILIZER BAR SEE SHEET ONE.

1. REMOVE ONLY THE FRONT BUMPER BOLTS – BOTH SIDES.
2. INSTALL THE M12 X 1.75 STUD INTO POSITION, UNTIL SEATED TO FRAME, WHERE BUMPER BOLT WAS REMOVED – BOTH SIDES. FINAL TIGHTENING WILL OCCUR WHEN NUTS ARE TIGHTENED.
3. REMOVE TWO M10 X 1.5 REAR STABILIZER BAR BRACKET BOLTS FROM EACH FRAME RAIL.
4. REMOVE REAR BUMPER BOLTS AND PLACE HITCH INTO POSITION AS SHOWN.
5. REATTACH REAR STABILIZER BAR BRACKETS USING SPACER BLOCK & LONGER FASTENERS PROVIDED.
6. USING THE HITCH AS A TEMPLATE, DRILL A 7/16" HOLE IN EACH FRAME RAIL FOR THE FORWARD ATTACHMENT, SEE FIGURE 1 FOR HOLE LOCATION.
7. FISHWIRE 7/16" BOLTS & BLOCKS THROUGH THE OVAL HOLE ON SIDE BRACKETS.

TIGHTEN 7/16 GR5 FASTENERS TO 50 LB.-FT.

TIGHTEN M10 FASTENERS TO 42 LB.-FT.

TIGHTEN M12 FASTENERS TO 75 LB.-FT.

APPROX WEIGHT (LB.)

45

FASTENER KIT

F75119

NOTE: Check hitch frequently, making sure all fasteners and ball are properly tightened. If hitch is removed, plug all holes in trunk pan or other body panels to prevent entry of water and exhaust fumes. A hitch or ball which has been damaged should be removed and replaced. Observe safety precautions when working beneath a vehicle and wear eye protection. Follow car maker's specs for maximum trailer weight and tongue weight. Do not cut access or attachment holes with a torch.