

# INSTALLATION INSTRUCTIONS

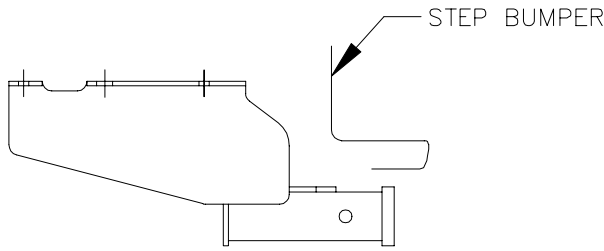
|                        |           |
|------------------------|-----------|
| VEHICLE                | HITCH NO. |
| DODGE RAM PICKUP TRUCK | 75101     |

EQUIPMENT REQUIRED:  
 WIRING ACCESS LOCATION: PU3 & PU4  
 DRILL BITS: NONE

DO NOT EXCEED LOWER OF  
 TOWING VEHICLE MFR'S RATINGS OR

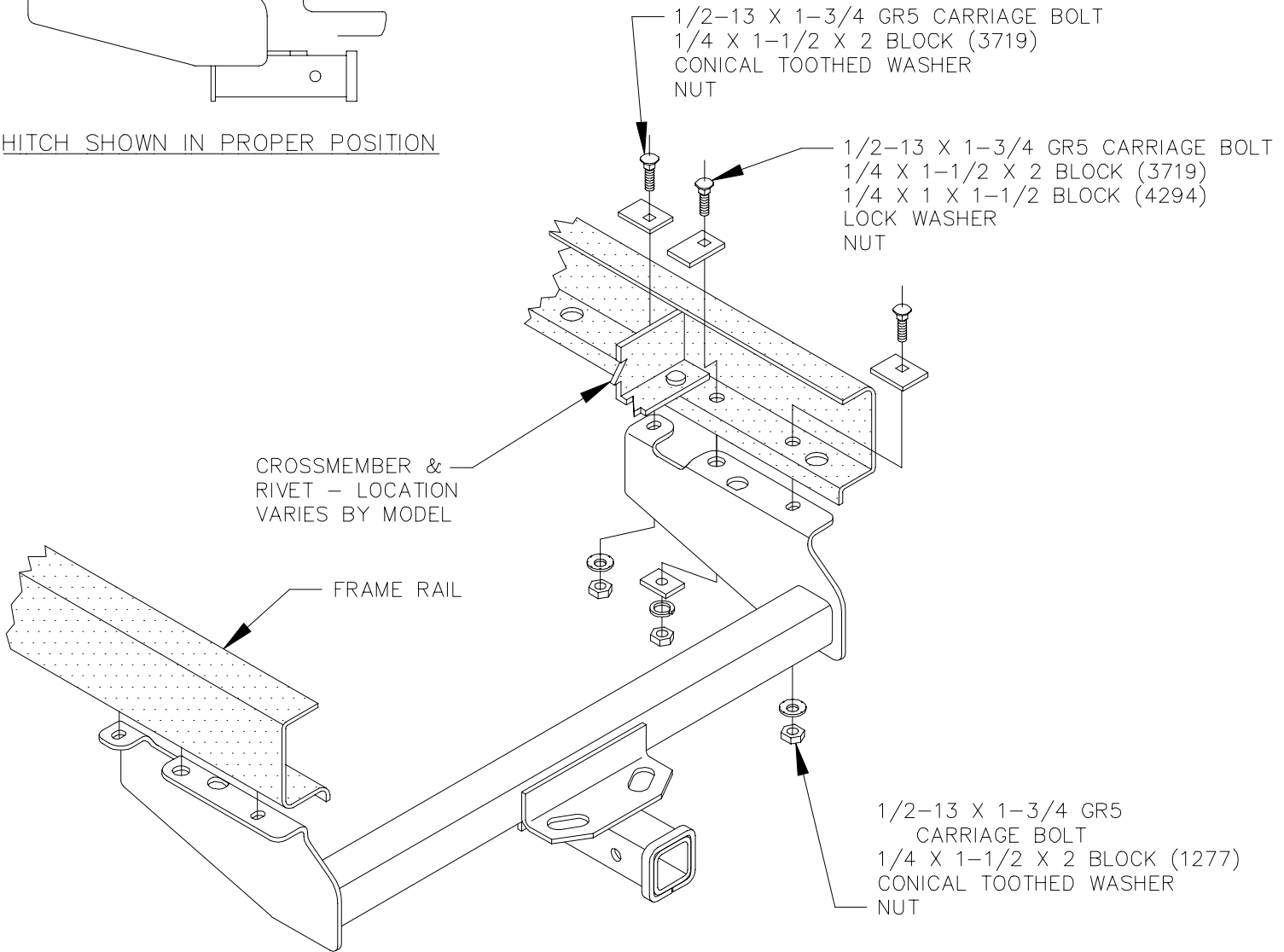
| HITCH TYPE ▼                  | MAX GROSS<br>TRLR WT(LB) | MAX TONGUE<br>WT(LB) |
|-------------------------------|--------------------------|----------------------|
| WEIGHT DISTRIBUTING           | 8000                     | 800                  |
| WEIGHT CARRYING<br>BALL MOUNT | 5000                     | 500                  |

WRENCHES: (TIGHTEN ALL FASTENERS WITH TORQUE WRENCH) 7/8



HITCH SHOWN IN PROPER POSITION

NOTE: ALL FASTENERS TYPICAL BOTH SIDES OF VEHICLE



USES EXISTING HOLES IN FRAME - NO DRILLING REQUIRED.

1. RAISE HITCH INTO POSITION AND INSTALL FASTENERS AS SHOWN ABOVE.

TIGHTEN ALL 1/2 GR5 FASTENERS TO 75 LB.-FT.

|                     |      |                  |          |
|---------------------|------|------------------|----------|
| APPROX WEIGHT (LB.) | 37.3 | FASTENER KIT NO. | 1131-099 |
|---------------------|------|------------------|----------|

NOTE: Check hitch frequently, making sure all fasteners and ball are properly tightened. If hitch is removed, plug all holes in trunk pan or other body panels to prevent entry of water and exhaust fumes. A hitch or ball which has been damaged should be removed and replaced. Observe safety precautions when working beneath a vehicle and wear eye protection. Follow car maker's specs for maximum trailer weight and tongue weight. Do not cut access or attachment holes with a torch.