

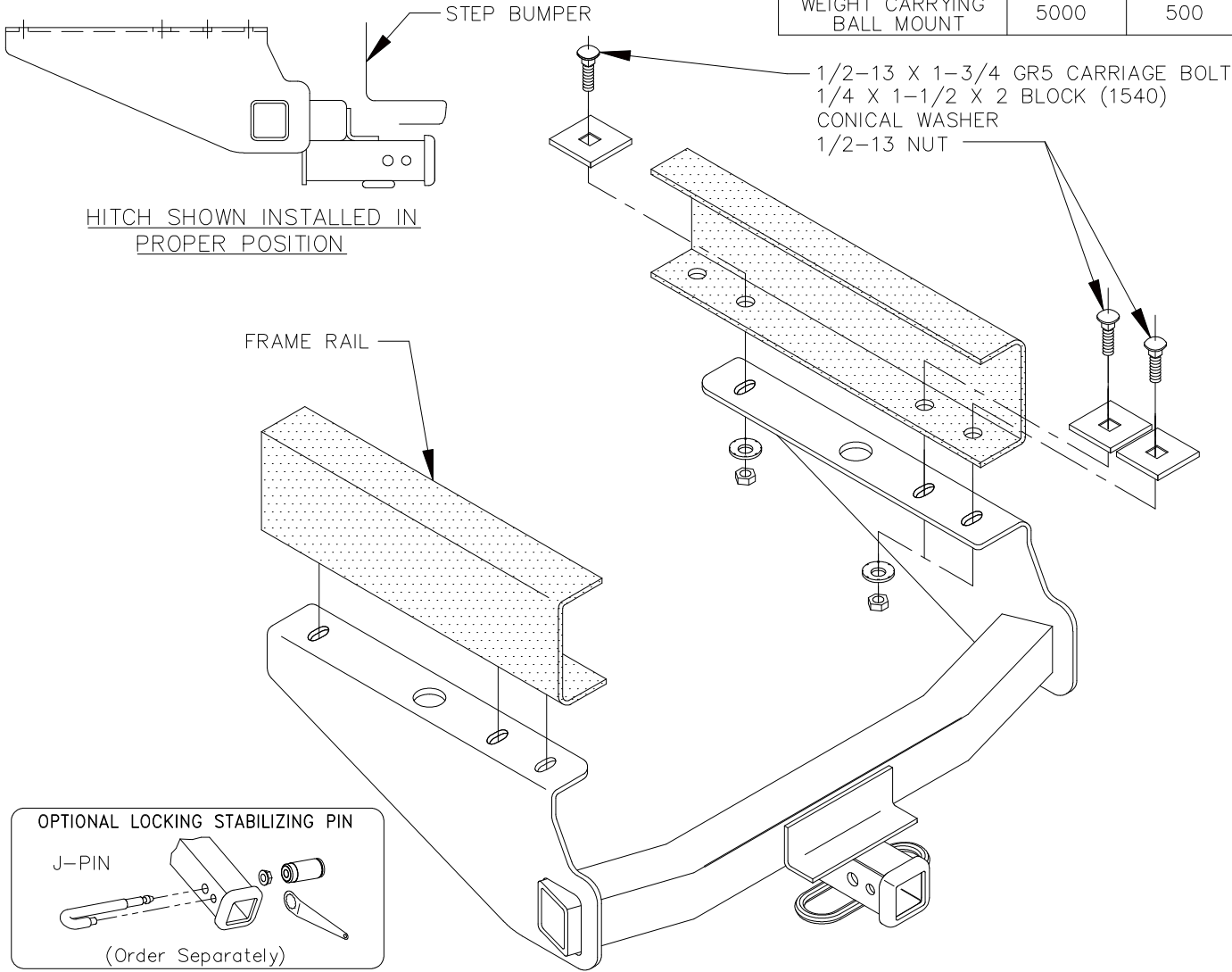
INSTALLATION INSTRUCTIONS

VEHICLE	HITCH NO.
FORD F-SERIES PICKUP TRUCK	75065
FORD SUPERCREW PICKUP TRUCK	87183

EQUIPMENT REQUIRED:  
WIRING ACCESS LOCATION: PU1 & PU2  
DRILL BITS: NONE  
HITCH REQUIRES 5/8" PIN AND CLIP IF STABILIZING PIN IS NOT INSTALLED.  
WRENCHES: (TIGHTEN ALL FASTENERS WITH TORQUE WRENCH) 7/8

DO NOT EXCEED LOWER OF  
TOWING VEHICLE MFR'S RATINGS OR

HITCH TYPE ▼	MAX GROSS TRLR WT(LB)	MAX TONGUE WT(LB)
WEIGHT DISTRIBUTING	8000	800
WEIGHT CARRYING BALL MOUNT	5000	500



- USES EXISTING HOLES IN FRAME – NO DRILLING REQUIRED.
1. SCRAPE WAX COATING OFF OF FRAME RAILS AROUND THE EIGHT BOLT HOLES.
  2. INSERT HEX BOLT, HARDENED FLAT WASHER, AND BLOCK IN FORWARD AND REARMOST ATTACHMENT HOLES IN EACH FRAME RAIL AS SHOWN ABOVE.
  3. RAISE HITCH INTO POSITION AND LOOSELY ATTACH FASTENERS TO BOLTS AS SHOWN ABOVE.
  4. CENTER HITCH AND INSTALL REMAINING FASTENERS AS SHOWN ABOVE.
- TIGHTEN ALL 1/2 GR5 FASTENERS TO 75 LB.-FT.

APPROX WEIGHT (LB.)	FASTENER KIT
46	F75065

NOTE: Check hitch frequently, making sure all fasteners and ball are properly tightened. If hitch is removed, plug all holes in trunk pan or other body panels to prevent entry of water and exhaust fumes. A hitch or ball which has been damaged should be removed and replaced. Observe safety precautions when working beneath a vehicle and wear eye protection. Follow car maker's specs for maximum trailer weight and tongue weight. Do not cut access or attachment holes with a torch.