

Installation Instructions

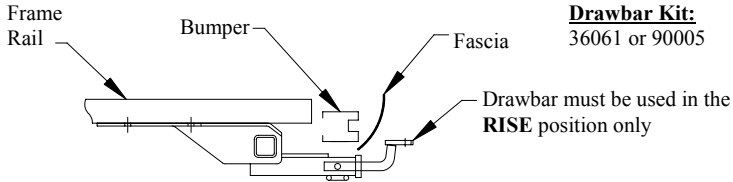
Part Numbers:

**BUICK LaCROSSE, BUICK ALLURE (CANADA ONLY),
BUICK CENTURY, OLDSMOBILE INTRIGUE**

36374

06384

90981



Drawbar Kit:
36061 or 90005

**Do Not Exceed Lower of Towing Vehicle
Manufacturer's Rating or**

3500 LB Max Gross Trailer Weight

300 LB Max Tongue Weight

Wiring Access Location: PC3, PC4

Hitch Shown In Proper Position

Equipment Required:

Fastener Kit: 36374F or 90981F

Wrenches: 3/4", 7/8"

Drill Bits: 1/2"

Tape 1/2" flat washers to
Hitch as necessary to
Eliminate gap with frame

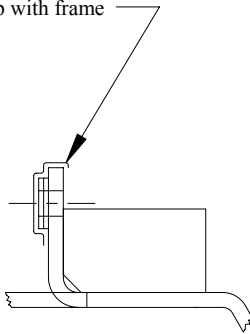


Figure 2

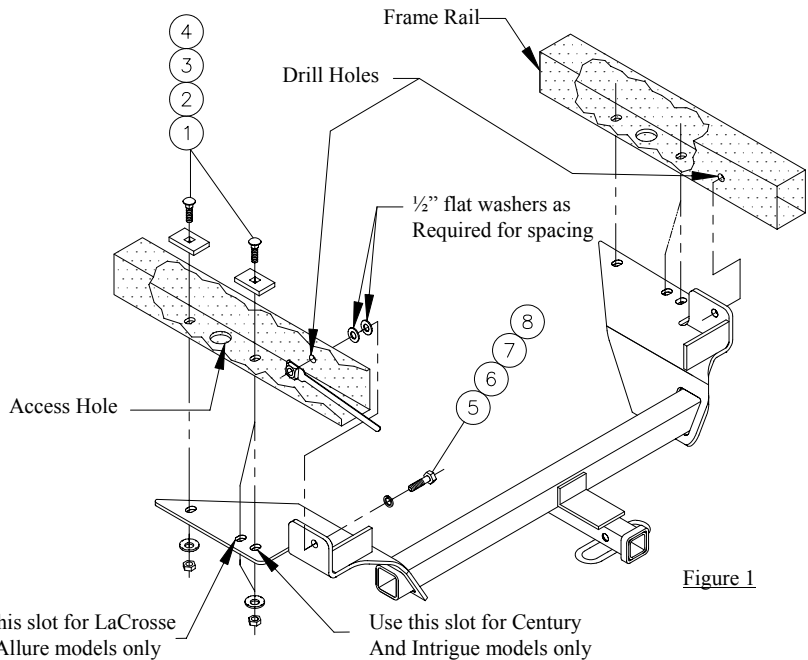


Figure 1

①	Qty. (4)	Carriage Bolt 1/2 x 1 1/4	⑤	Qty. (2)	Hex bolt 1/2 x 1 1/4
②	Qty. (4)	Block 1/4 x 1 1/2 x 2"	⑥	Qty. (2)	Lock washer 1/2"
③	Qty. (4)	Conical Toothed washer 1/2"	⑦	Qty. (4)	Flat washer 1/2"
④	Qty. (4)	Hex nut 1/2"	⑧	Qty. (2)	Handle nut assembly

- Detach (5) rubber exhaust hangers and lower rearward portion of exhaust system.
- Insert carriage bolts and blocks in frame rails thru access hole shown.
- Raise hitch into position and check side-to-side clearance with frame. Tape 1/2" washers to hitch as necessary to eliminate gap (see figure 2).
- Raise hitch into position and attach with carriage bolts as shown in figure 1.
- Using hitch as a template, drill 2 holes in sides of frame rails.
- Insert hex bolt and lock washer thru side frame rail and secure with handle nut inserted thru end of frame rail.

Tighten all 1/2-13 GR5 fasteners with torque wrench to 75 Lb.-Ft.

- Reinstall exhaust system.

Note: check hitch frequently, making sure all fasteners and ball are properly tightened. If hitch is removed, plug all holes in trunk pan or other body panels to prevent entry of water and exhaust fumes. A hitch or ball which has been damaged should be removed and replaced. Observe safety precautions when working beneath a vehicle and wear eye protection. Do not cut access or attachment holes with a torch.