

INSTALLATION INSTRUCTIONS

VEHICLE

TOYOTA AVALON
 TOYOTA CAMRY
 TOYOTA SOLARA
 LEXUS ES300 & ES330

EQUIPMENT REQUIRED:

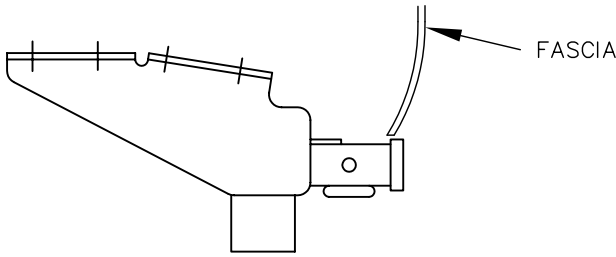
WIRING ACCESS LOCATION: PC3, PC4

DRILL BITS: 1/2"

HITCH REQUIRES 1/2" PIN AND CLIP.

WRENCHES: (TIGHTEN ALL FASTENERS WITH TORQUE WRENCH) 11/16, 14mm, 17mm

3500 LB MAX GROSS TRAILER WT
 300 LB MAX TONGUE WEIGHT
 DO NOT EXCEED TOWING VEHICLE RATINGS



HITCH SHOWN IN PROPER POSITION

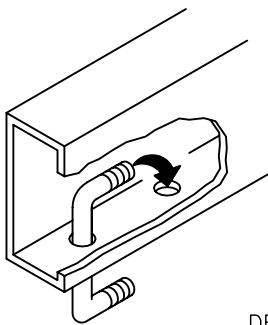


FIGURE 2

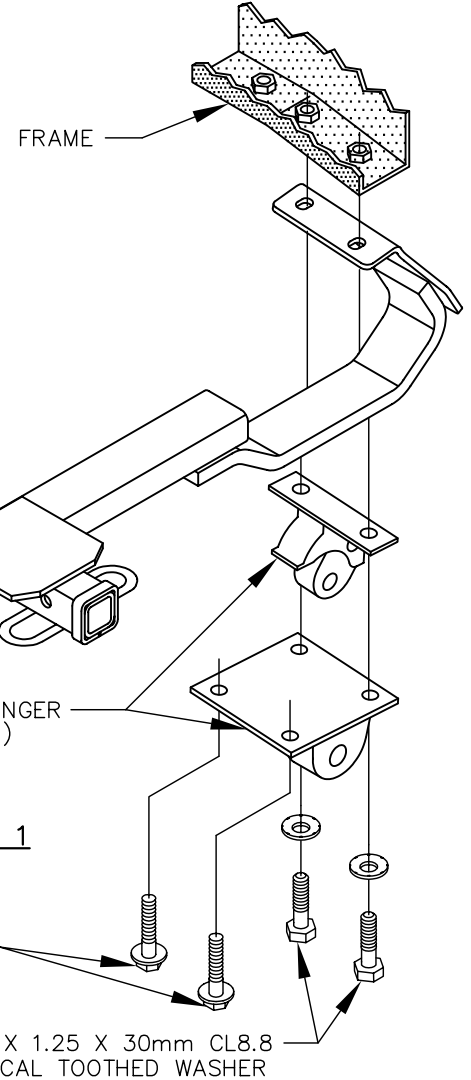
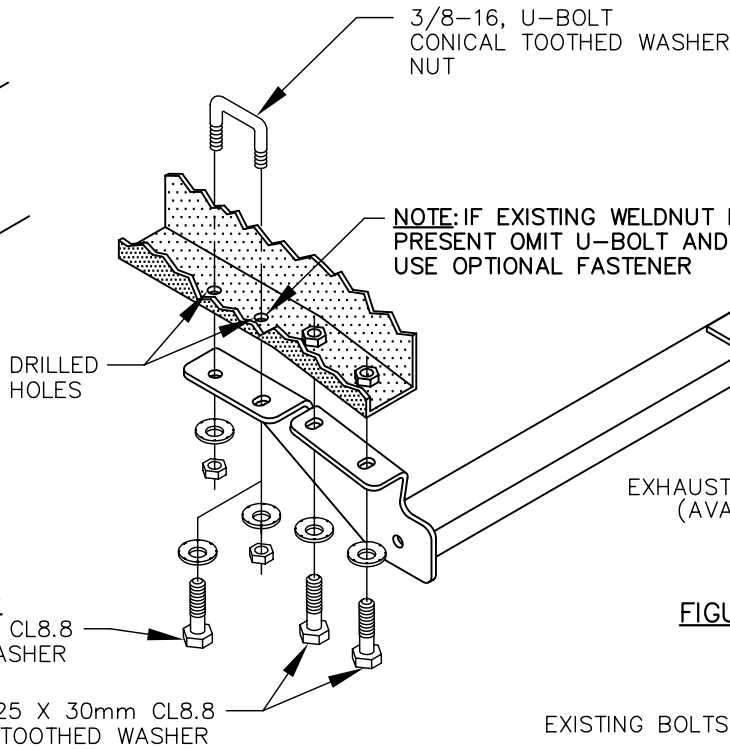


FIGURE 1

APPROX WEIGHT (LB.)
 29

FASTENER KIT
 36336F

NOTE: Check hitch frequently, making sure all fasteners and ball are properly tightened. If hitch is removed, plug all holes in trunk pan or other body panels to prevent entry of water and exhaust fumes. A hitch or ball which has been damaged should be removed and replaced. Observe safety precautions when working beneath a vehicle and wear eye protection. Follow car maker's specs for maximum trailer weight and tongue weight. Do not cut access or attachment holes with a torch.

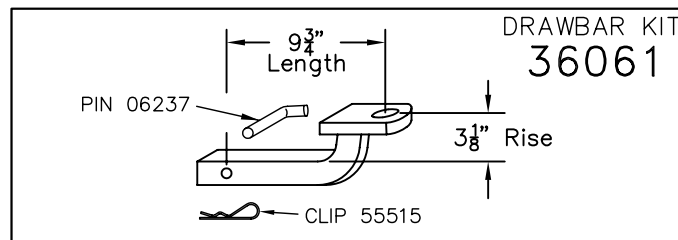
INSTALLATION INSTRUCTIONS

VEHICLE

TOYOTA AVALON
TOYOTA CAMRY
TOYOTA SOLARA
LEXUS ES300 & ES330

1. IF PRESENT, REMOVE TIE DOWN BRACKETS AND BOLTS FROM EACH SIDE OF VEHICLE FRAME. RETURN TO VEHICLE OWNER.
NOTE: ON VEHICLES WITH MUFFLER HANGER BRACKET WELDED TO PASSENGER'S SIDE TIE-DOWN BRACKET, THE TIE-DOWN/MUFFLER HANGER WILL BE RE-ATTACHED WITH HITCH IN STEP 3.
2. ON VEHICLES WITH MUFFLER HANGER BRACKET BOLTED TO BOTTOM OF FRAME RAIL ON PASSENGER'S SIDE, REMOVE BOLTS WHICH ATTACH BRACKET TO FRAME.
3. RAISE HITCH INTO POSITION AND INSTALL (4) 10mm BOLTS AND CONICAL TOOTHED WASHERS AS SHOWN IN FIGURE 1.
NOTE: FOR VEHICLES WITH A MUFFLER MOUNTING BRACKET BOLTED TO BOTTOM OF FRAME RAIL OR A TIE DOWN WITH THE MUFFLER MOUNTING BRACKET WELDED ON, HITCH WILL BE SANDWICHED BETWEEN FRAME RAIL AND THESE COMPONENTS.
 - FOR (2) BOLT EXHAUST HANGER CONFIGURATION, INSTALL (2) 10mm BOLTS AND CONICAL TOOTHED WASHERS SUPPLIED WITH HITCH AS SHOWN IN FIGURE 1.
 - FOR (4) BOLT EXHAUST HANGER CONFIGURATION, INSTALL (2) 10mm EXISTING BOLTS (RETAINED IN STEP 1) AND (2) 10mm BOLTS AND CONICAL TOOTHED WASHERS SUPPLIED WITH HITCH AS SHOWN IN FIGURE 1.
4. IF EXISTING WELDNUT IS PRESENT IN LOCATION SHOWN ABOVE, OMIT U-BOLT AND USE EXISTING WELDNUT AND OPTIONAL FASTENER.
5. FOR VEHICLES WITHOUT WELDNUT USE HITCH AS TEMPLATE AND DRILL (2) 1/2" HOLES IN VEHICLE FRAME AS SHOWN IN FIGURE 1.
6. INSERT U-BOLT AS SHOWN IN FIGURE 2. INSTALL CONICAL TOOTHED WASHERS AND 3/8 HEX NUTS.
NOTE: ON TWIN TIP EXHAUST MODELS, EXHAUST CLEARANCE CAN BE INCREASED BY LOOSENING (2) SET SCREWS ON EACH CHROME EXHAUST TIP AND REMOVING CHROME TIP. RETURN TIPS TO CUSTOMER FOR REINSTALLATION UPON REMOVAL OF HITCH.

TIGHTEN ALL M10 CL8.8 TO 38 LB-FT.
TIGHTEN ALL 3/8 U-BOLT NUTS TO 25 LB-FT.



USE ONLY THE DRAWBAR SHOWN FOR CORRECT BUMPER CLEARANCE AND HEIGHT.
DRAWBAR MUST BE USED IN THE RISE POSITION ONLY.

APPROX WEIGHT (LB.)
29

FASTENER KIT
36336F

NOTE: Check hitch frequently, making sure all fasteners and ball are properly tightened. If hitch is removed, plug all holes in trunk pan or other body panels to prevent entry of water and exhaust fumes. A hitch or ball which has been damaged should be removed and replaced. Observe safety precautions when working beneath a vehicle and wear eye protection. Follow car maker's specs for maximum trailer weight and tongue weight. Do not cut access or attachment holes with a torch.