

# Installation Instructions

## Honda CR-V

Part Numbers:  
**24790**  
**60907**  
**77164**

**Drawbar Kit:**  
 3591

Drawbar must be used in the **RISE** position only.

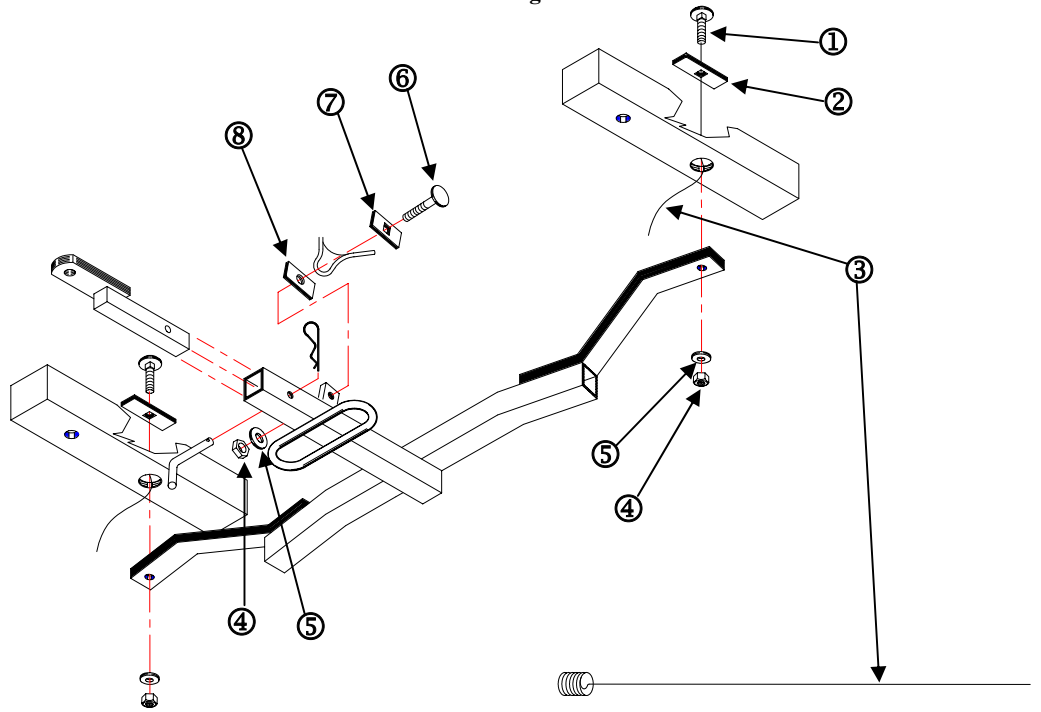
**Do Not Exceed Lower of Towing Vehicle  
 Manufacturer's Rating or**

**2000 LB (908 Kg) Max Gross Trailer Weight**  
**200 LB (90.8 Kg) Max Tongue Weight**

**Equipment Required:**

- Fastener Kit:** 24790F
- Wrenches:** 3/4"
- Drill Bits:** none

**Wiring Access Location:** SUV3



①	Qty. (2)	BOLT – CARRIAGE 1/2"-13 X 1 3/4" GR 5	⑤	Qty. (3)	WASHER – CONICAL TOOTHED
②	Qty. (2)	REINFORCEMENT PLATE 1" X 3" X 1/4"	⑥	Qty. (1)	BOLT – CARRIAGE 1/2"-13 X 2" GR 5
③	Qty. (2)	BOLT LEADER	⑦	Qty. (1)	SPACER 1" X 2" X 1/4" (SQUARE HOLE)
④	Qty. (3)	NUT 1/2"-13	⑧	Qty. (1)	SPACER 1" X 2" X 1/4" (ROUND HOLE)

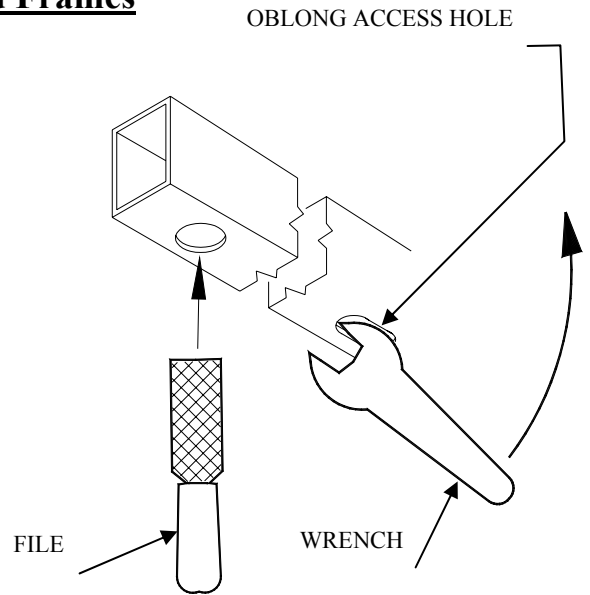
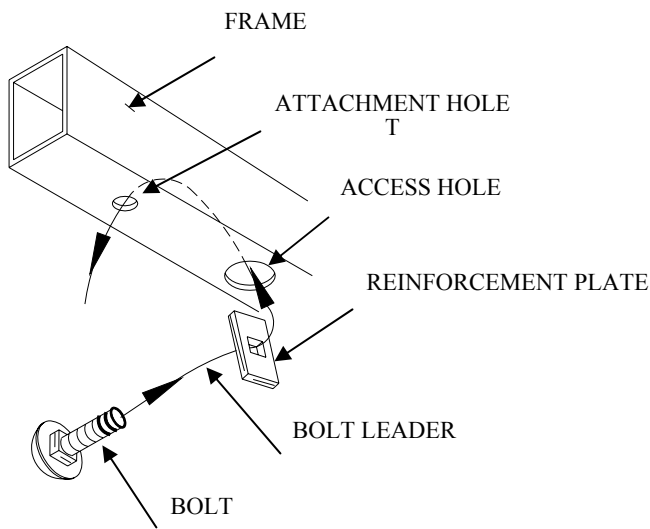
1. Thread bolt leader (3) onto 1 3/4" carriage bolt (1) and insert bolt leader through hole in reinforcing plate (2).
2. Insert carriage bolt, headfirst, followed by reinforcing plate through hole in hole in bottom of frame (refer to "Access to Enclosed Frame" on last page of instruction sheet) and carefully pull on bolt leader until bolt and reinforcing plate assembly is in position. Repeat for other side
3. Install hitch loosely onto vehicle, being careful not to push bolt assemblies back into frame channels. Remove bolt leaders and install conical washers (5) and nuts (4). Install 2" carriage bolt (6), along with square hole spacer (7), round hole spacer (8), conical washer (5) & nut (4) through vehicle's tie down hook and hitch's mounting tab in order as shown in illustration.
4. Tighten all bolts, referring to torque table on instruction sheet.

Tighten all 1/2" fasteners with torque wrench to 75 Lb.-Ft. (102 n\*m)

Note: check hitch frequently, making sure all fasteners and ball are properly tightened. If hitch is removed, plug all holes in trunk pan or other body panels to prevent entry of water and exhaust fumes. A hitch or ball which has been damaged should be removed and replaced. Observe safety precautions when working beneath a vehicle and wear eye protection. Do not cut access or attachment holes with a torch.

# Installation Instructions

## Access to Enclosed Frames



---

### INSTRUCTIONS:

- 1 . Check to see if reinforcing plate and bolt head will fit through access hole, if not modify hole to accept hardware, the illustration above shows two ways of achieving this, the first is using a file, the second is by inserting a wrench or prying as shown. **Enlarge hole just enough to get hardware through.**
- 2 . Thread bolt leader onto bolt, insert loose end of bolt leader through hole in reinforcing plate. Fish bolt leader through access hole and attachment hole.
- 3 . Pull hardware into position, refer to illustration. **NOTE:** it is much easier if bolt and reinforcing plate are not engaged while inserting them into frame, refer to illustration.
- 4 . Proceed with installation of hitch as per instructions.