



# Installation Instructions

PART NUMBERS: 75232, 87694, 44782



## Applications:

Years	Make	Models
-------	------	--------

2011-Current*	Ram	1500
---------------	-----	------

\*Visit our website for the most up to date information regarding application years and trim levels.

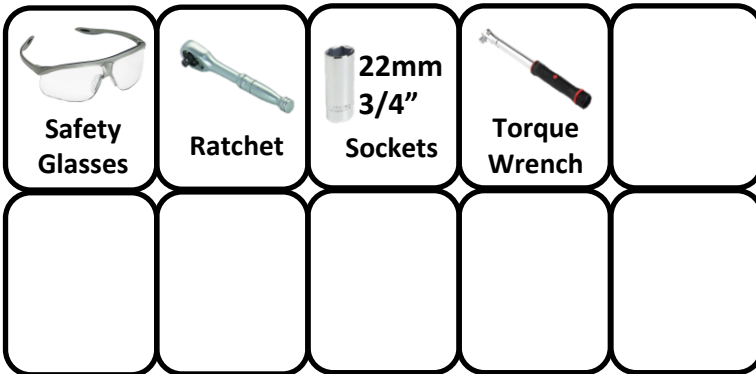
## Installation Time: 40 MIN.

The time listed above is the average time for professional installers. If you do not feel comfortable performing this installation on your own or are in need of assistance, please contact a professional installer.



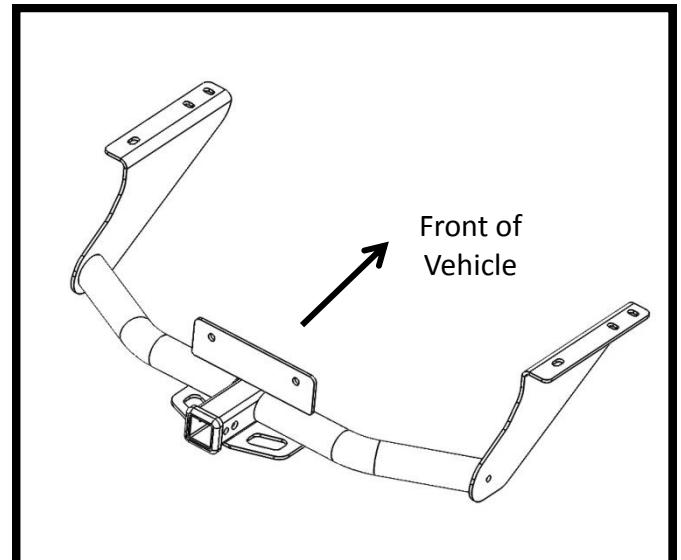
**Representative Vehicle Photo**

## Equipment Required:



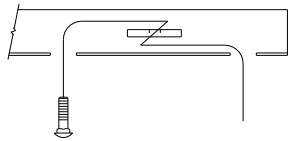
**DO NOT EXCEED LOWER OF TOWING VEHICLE  
MANUFACTURER'S RATING OR:**

Hitch Type	Max Gross Trailer Weight	Max Tongue Weight
Weight Carrying	10,000lb. (4536kg)	1,000lb. (454kg)
Weight Distributing	12,000lb. (5443kg.)	1,200lb. (544kg)

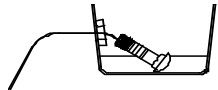


**Hitch Illustration**

**Always wear SAFETY GLASSES when installing hitch**



Kink pullwire to keep spacer independent of bolt



Fishwire technique

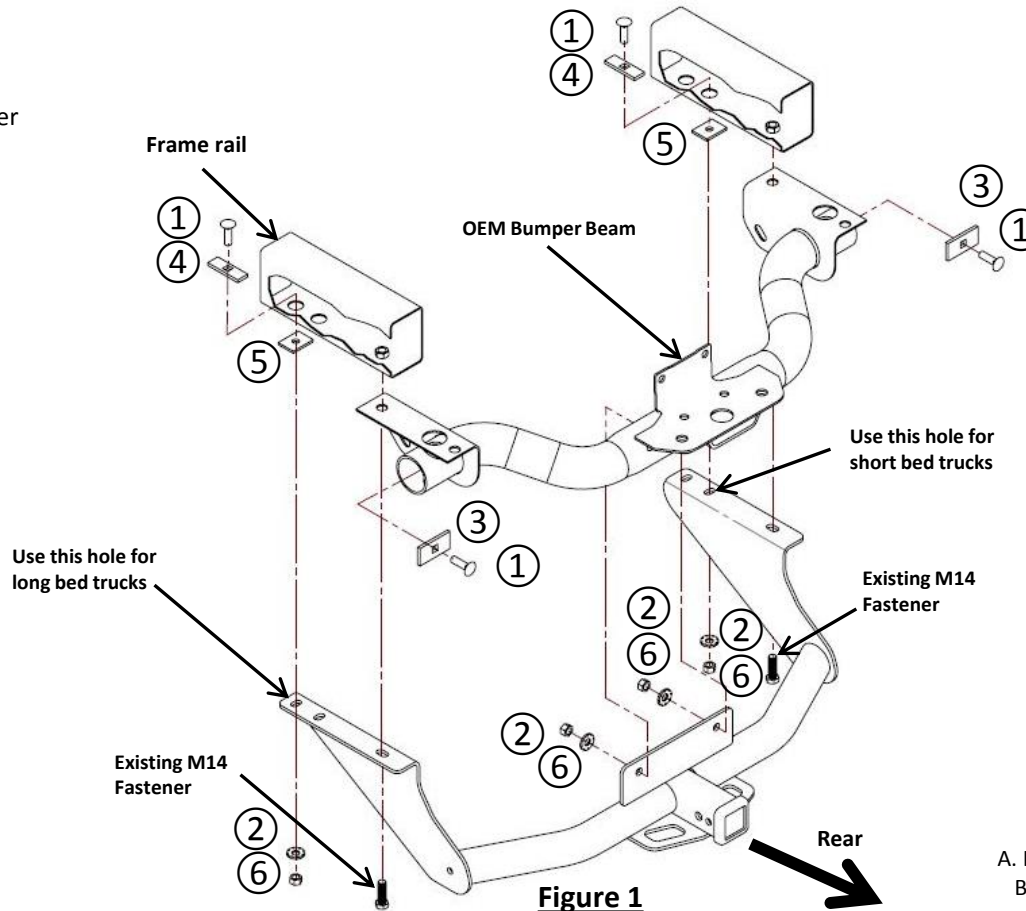
**Figure 3**

# Installation Instructions

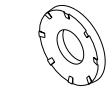
## PART NUMBERS: 75232, 87694, 44782

### Fastener Kit: 75232F

1	Qty.(4)	Carriage Bolt ½-13 x 1.75 Gr5	
2	Qty.(4)	Conical Tooth Washer 1/2"	
3	Qty.(2)	Spacer -Sq. Hole .25 x 1.50 x 3.00	
4	Qty.(2)	Spacer -Sq. Hole .25 x 1.00 x 3.00	
5	Qty.(2)	Spacer -Round Hole .188 x 1.50 x 2.00	
6	Qty.(4)	Hex Nut ½-13	
7	Qty.(4)	½" Fishwire	



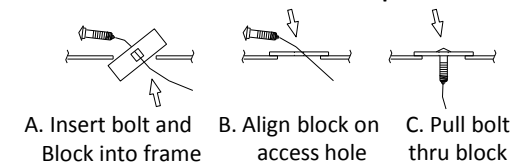
**Figure 1**



Teeth side against hitch

**Figure 2**

Reverse fishwire technique



### Installation Steps

1. Lower spare tire for ease of installation.
2. Remove the existing M14 bolt connecting the bumper beam to frame rail on driver and passenger side of the vehicle. Save bolts for re-installation later.
3. Reverse fishwire items 1 and 4, carriage bolts and spacers, through the large round holes in driver and passenger frame rails. (See fig. 2)
4. Fishwire items 1 and 3, carriage bolts and spacers, through the ends of the bumper beam and out of the slot on the forward side of the bumper beam. (See fig. 3)
5. Raise the hitch into position and loosely install items 2, 5 and 6, conical washers, spacers (spacers go between frame and hitch) and hex nuts, onto previously installed carriage bolts as shown.
6. Re-install the M14 fasteners removed in step 2.
7. **Tighten all ½" bolts to 75 lbft. (102N\*M) & M14 fasteners with torque wrench to 122lb.-Ft. (165N\*M)**

**▲ Proper torque is needed to keep the hitch secure to the vehicle when towing.**

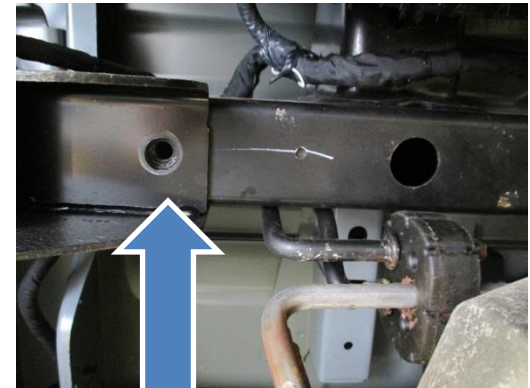
8. Raise the spare tire back into position

Note: check hitch frequently, making sure all fasteners and ball are properly tightened. If hitch is removed, plug all holes in trunk pan or other body panels to prevent entry of water and exhaust fumes. A hitch or ball which has been damaged should be removed and replaced.

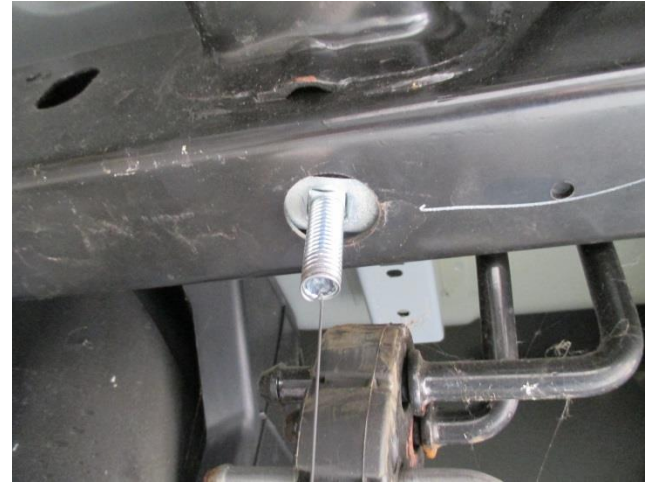
1. Lower spare tire for ease of installation.



2. Remove the existing M14 bolt connecting the bumper beam to frame rail on driver and passenger side of the vehicle. Save bolts for re-installation later.



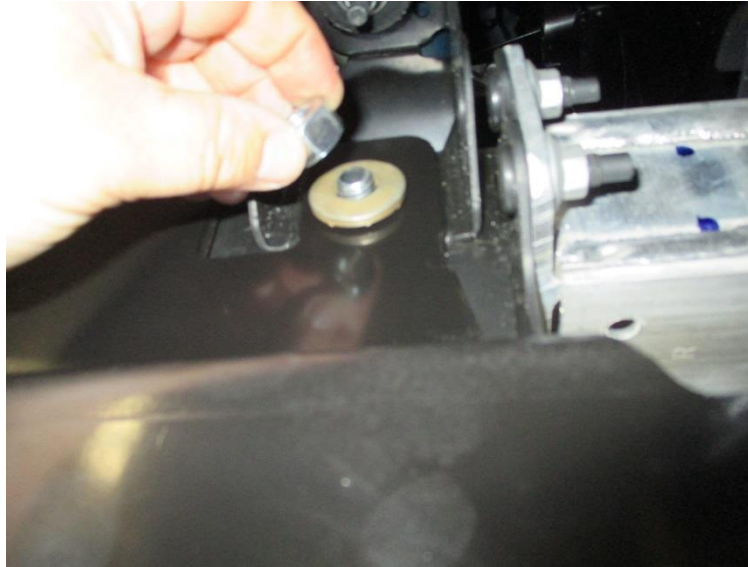
3. Reverse fishwire items 1 and 4, carriage bolts and spacers, through the large round holes in driver and passenger frame rails. (See fig. 2)



4. Fishwire items 1 and 3, carriage bolts and spacers, through the ends of the bumper beam and out of the slot on the forward side of the bumper beam. (See fig. 3)



5. Raise the hitch into position and loosely install items 2, 5 and 6, conical washers, spacers (spacers go between frame and hitch) and hex nuts, onto previously installed carriage bolts as shown.

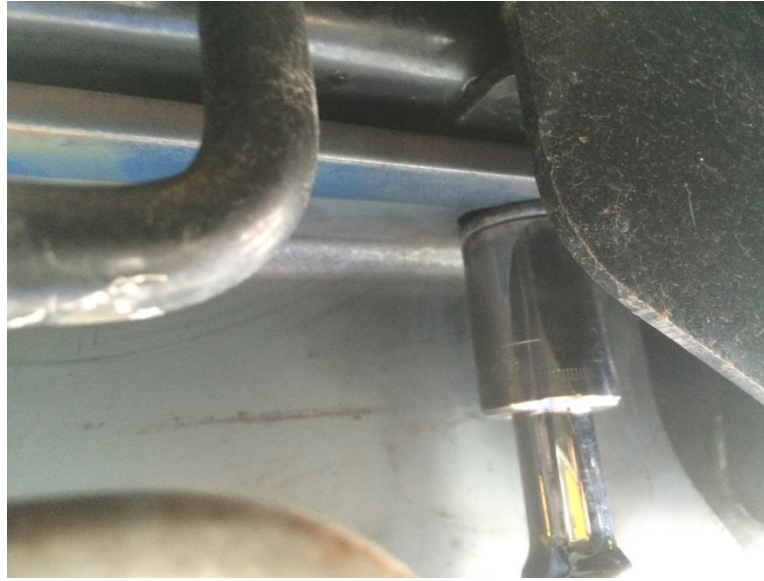


6. Re-install the M14 fasteners removed in step 2.



7. Tighten all ½" bolts to 75 lbft. (102N\*M) & M14 fasteners with torque wrench to 122Lb.-Ft. (165N\*M)

⚠ Proper torque is needed to keep the hitch secure to the vehicle when towing.



8. Raise the spare tire back into position

