



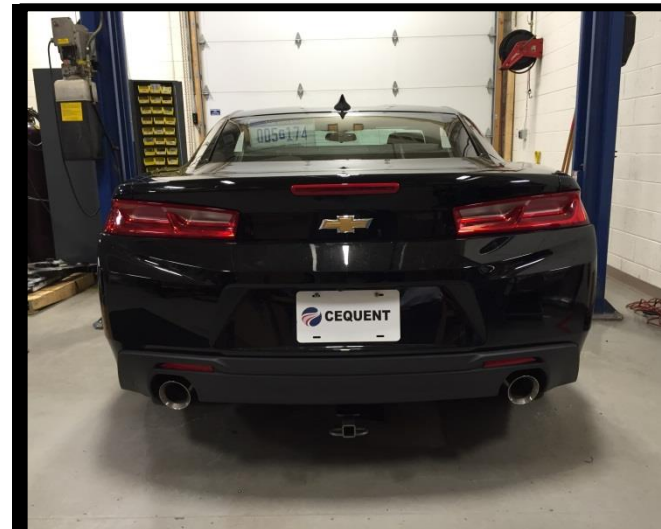
## Applications:

Years	Make	Models
2016-Current*	Chevrolet	Camaro

\*Visit our website for the most up to date information regarding application years and trim levels.

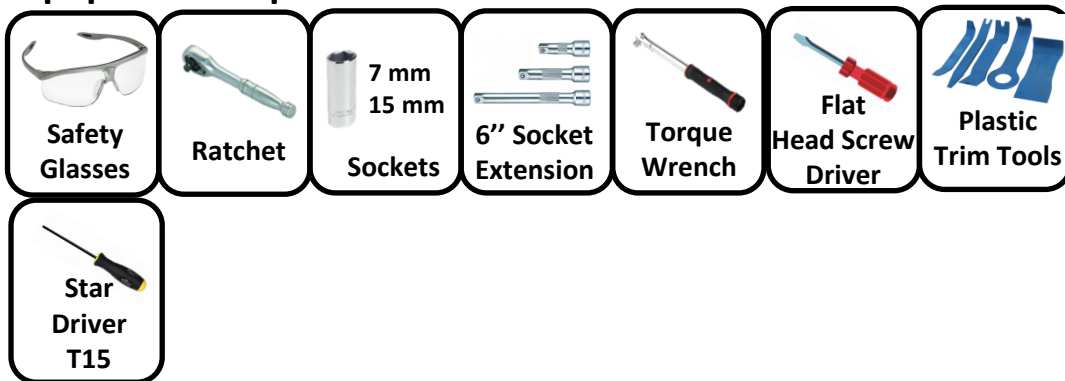
## Installation Time: **50 min**

The time listed above is the average time for professional installers. If you do not feel comfortable performing this installation on your own or are in need of assistance, please contact a professional installer.



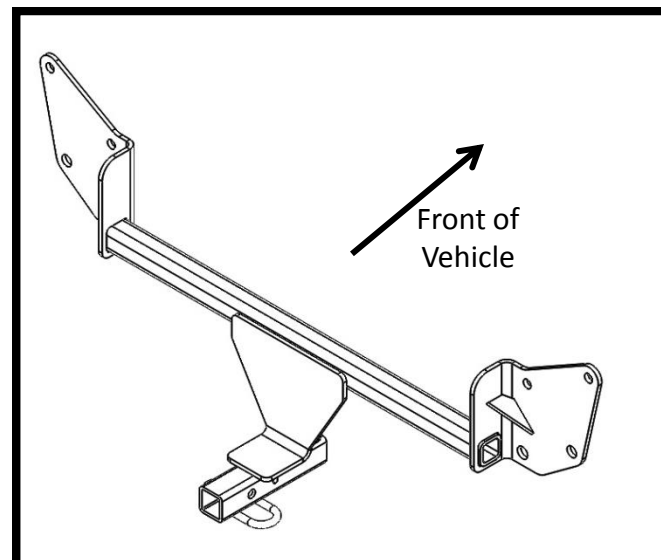
Representative Vehicle Photo

## Equipment Required:



**DO NOT EXCEED LOWER OF TOWING VEHICLE MANUFACTURER'S RATING OR:**

Hitch Type	Max Gross Trailer Weight	Max Tongue Weight
Weight Carrying	2000 lb. (908 kg)	200 lb. (90.8 kg)
Weight Distributing	X	X



Hitch Illustration



Always wear SAFETY GLASSES  
when installing hitch

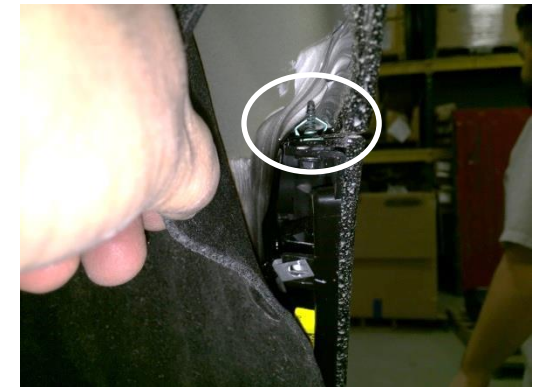
# Installation Instructions

PART NUMBERS: 24938, 77326, CQT24938

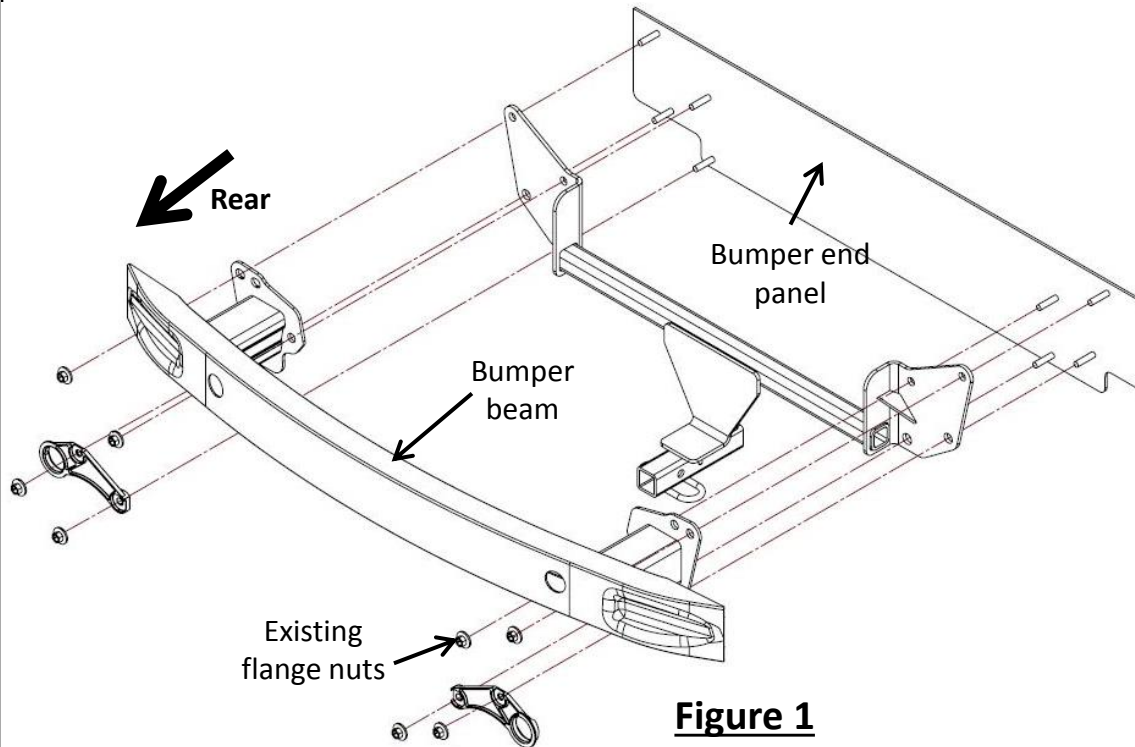
(Sold separately)

Drawbar Kit: 3593

Drawbar must be used in the  
**RISE** position only.



**Figure 2**



**Figure 1**

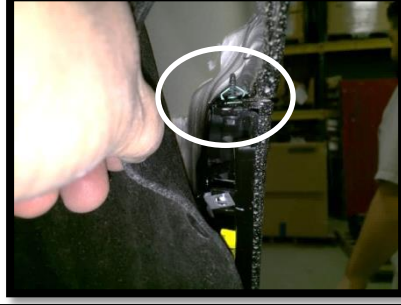
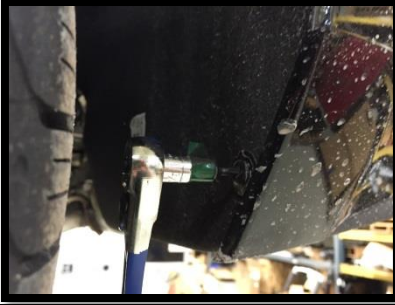


**Figure 3**

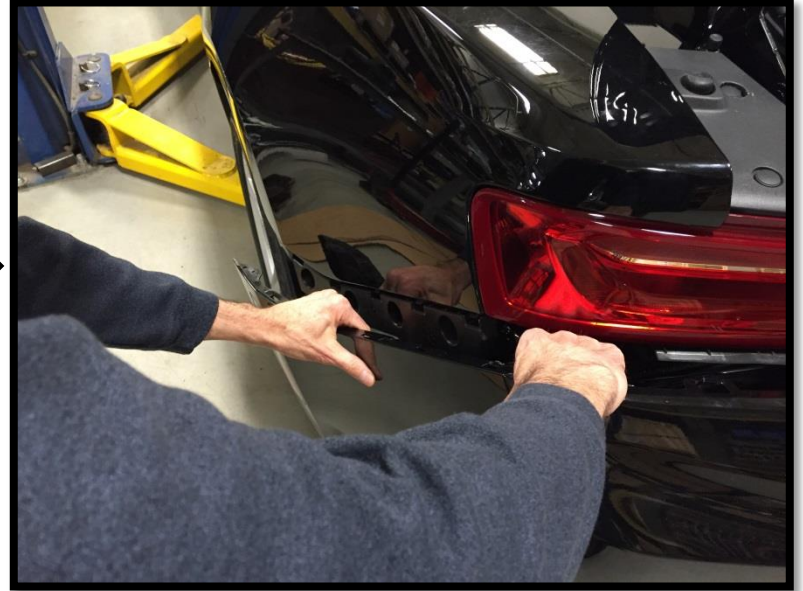
1. Fascia removal – use 7 mm socket and T-15 stardriver to remove (10) bolts and (4) screws, 1 bolt each side is hidden behind the wheel well liner. see Figure 2.
2. Fascia removal – Gently remove the fascia and unplug wiring. Set bumper fascia aside.
3. Bumper beam removal – Use 15 mm socket to remove (8) flange nuts, attaching bumper to end panel, and then slide exhaust bracket off of the 2 lower studs then remove bumper beam, see Figure 3.
4. Hitch installation – raise the hitch and align the attachment holes on hitch with studs on the end panel. Raise the bumper beam and sandwich the hitch, re-align the exhaust bracket with the 2 lower studs. see Figure 1. Reuse the flange nuts and loosely fasten them.
5. **Tighten all fasteners with torque wrench to 53 Lb.-Ft. (72 N\*M)**  
 ▲ **Proper torque is needed to keep the hitch secure to the vehicle when towing.**
6. Reinstall the wiring, fasteners, fascia, in steps 1 and 2. **(Trim center, inside, lower edge of fascia in area of the hitch if necessary.)** The hitch is intentionally designed to be close to the fascia at the center.

Note: check hitch frequently, making sure all fasteners and ball are properly tightened. If hitch is removed, plug all holes in trunk pan or other body panels to prevent entry of water and exhaust fumes. A hitch or ball which has been damaged should be removed and replaced. Observe safety precautions when working beneath a vehicle and wear eye protection. Do not cut access or attachment holes with a torch.

Fascia removal – use 7 mm socket and T-15 stardriver to remove (10) bolts and (4) screws, 1 bolt each side is hidden behind the wheel well liner. see Figure 2.



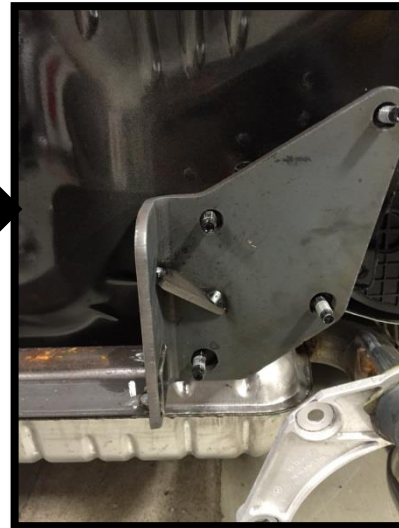
Fascia removal – Gently remove the fascia and unplug wiring. Set bumper fascia aside.



Bumper beam removal – Use 15 mm socket to remove (8) flange nuts, attaching bumper to end panel, and then slide exhaust bracket off of the 2 lower studs then remove bumper beam, see Figure 3.



Hitch installation – raise the hitch and align the attachment holes on hitch with studs on the end panel. Raise the bumper beam and sandwich the hitch, re-align the exhaust bracket with the 2 lower studs. see Figure 1. Reuse the flange nuts and loosely fasten them.





**Tighten all fasteners with torque wrench to 53 lb.-ft. (72 N\*M)**

**▲ Proper torque is needed to keep the hitch secure to the vehicle when towing.**



Reinstall the wiring, fasteners, fascia, in steps 1 and 2. **(Trim center, inside, lower edge of fascia in area of the hitch if necessary.)** The hitch is intentionally designed to be close to the fascia at the center.

