

**⚠ WARNING**

To prevent **SERIOUS INJURY, DEATH or PROPERTY DAMAGE:**

- **ALWAYS** read, understand and follow warnings and instructions for your hitch **BEFORE** installation. Keep for future reference.
- **DO NOT** cut, weld or modify this receiver.
- **CHECK** all fasteners are tight and your hitch is securely mounted to your vehicle periodically.
- **ALWAYS** read, understand and follow all warnings and instructions for your vehicle and for other accessories you will use with your hitch **BEFORE** use.
- **LOAD** the trailer heavier in front.
- **DO NOT** exceed lower of towing vehicle manufacturer's rating or:

| Hitch Type          | Max Gross Trailer Weight | Max Tongue Weight |
|---------------------|--------------------------|-------------------|
| Weight Carrying     | 4500 lb. (2043kg)        | 675 lb. (306 kg)  |
| Weight Distributing | 4500 lb. (2043kg)        | 675 lb. (306 kg)  |

- **ALWAYS** wear your seatbelt.
- **SLOW DOWN** when towing, **NEVER** exceed any posted speed limit.
- If **EXCESS SWAY** occurs, take your foot off the gas pedal and hold the steering wheel as steady as possible. **DO NOT** apply your brakes and **DO NOT** speed up.

# Installation Instructions

PART NUMBERS: 76557, 84557, CQT76557

## Applications:

| Years         | Make | Models   |
|---------------|------|----------|
| 2022-Current* | Ford | Maverick |

\*Visit our website for the most up to date information regarding application years and trim levels.

## Installation Time: 60 min

The time listed above is the average time for professional installers. If you do not feel comfortable performing this installation on your own or are in need of assistance, please contact a professional installer.



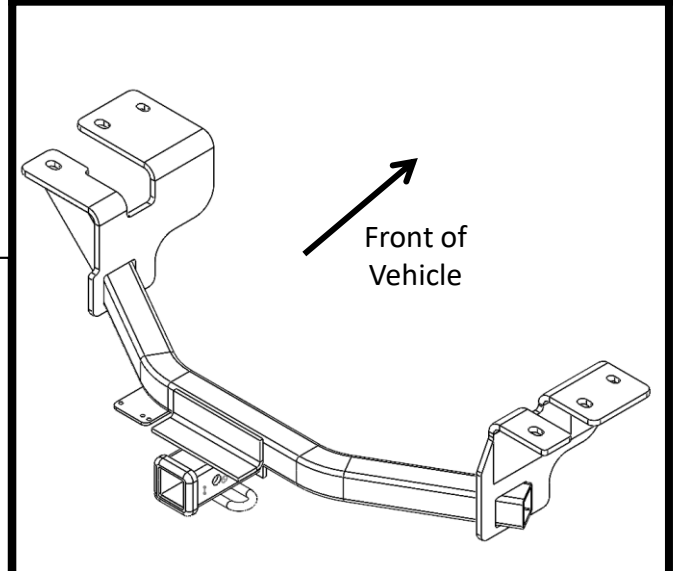
Representative Vehicle Photo

## Equipment Required:

|                |                  |                         |                       |                        |
|----------------|------------------|-------------------------|-----------------------|------------------------|
| Safety Glasses | Ratchet          | 7 mm<br>19 mm<br>11/16" | Flat Head Screwdriver | Exhaust Removal Pliers |
| Die Grinder    | Socket Extension | Torque Wrench           | Soapy water           | Wire brush             |

## DO NOT EXCEED LOWER OF TOWING VEHICLE MANUFACTURER'S RATING OR:

| Hitch Type          | Max Gross Trailer Weight | Max Tongue Weight |
|---------------------|--------------------------|-------------------|
| Weight Carrying     | 4500 lb. (2043kg)        | 675 lb. (306 kg)  |
| Weight Distributing | 4500 lb. (2043kg)        | 675 lb. (306 kg)  |



Hitch Illustration

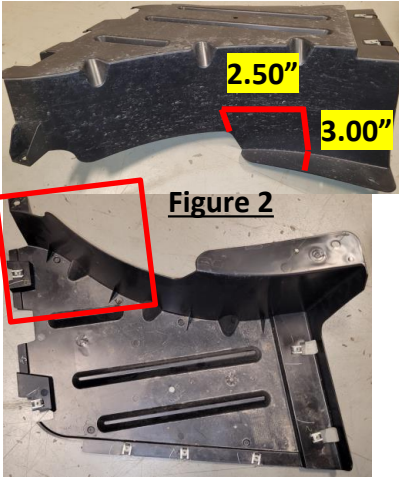
**Always wear SAFETY GLASSES when installing hitch**

**Conical washer teeth side against hitch**

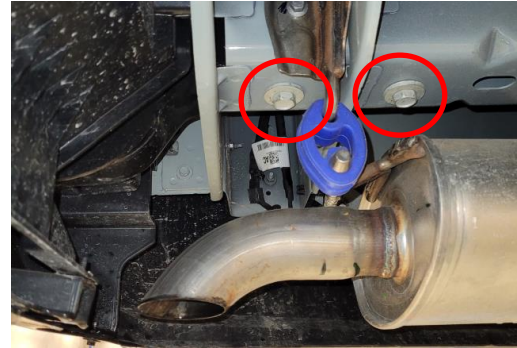
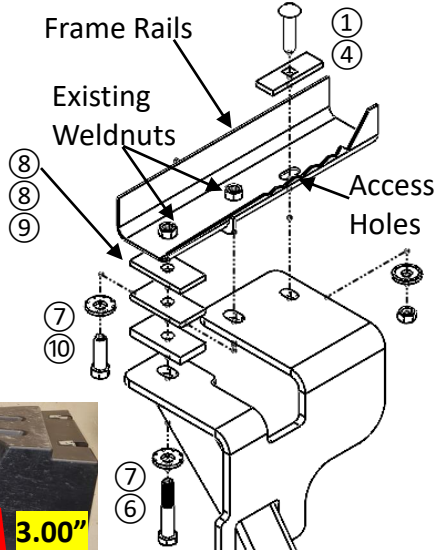
# Installation Instructions

## PART NUMBERS: 76557, 84557, CQT76557

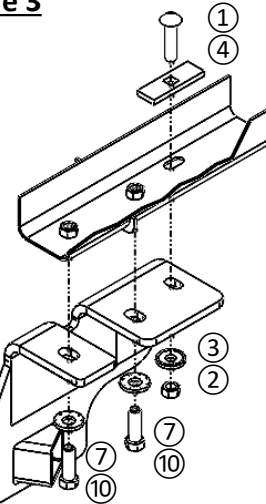
### Fastener Kit: 76557F



**Figure 2**

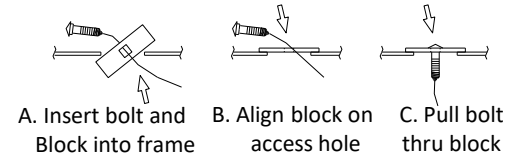


**Figure 3**



**Figure 1**

|   |          |  |  |
|---|----------|--|--|
| ① | Qty. (2) | Carriage bolt<br>7/16" -14 x 2.00, GR5 |  |
| ② | Qty. (2) | Hex nut<br>7/16" -14 GR2               |  |
| ③ | Qty. (2) | Conical washer<br>7/16"                |  |
| ④ | Qty. (2) | Spacer<br>.250 x 1.00 x 3.00           |  |
| ⑤ | Qty. (2) | Pull wire<br>7/16"                     |  |
| ⑥ | Qty. (1) | Bolt<br>M12x1.75x70mm CL 8.8           |  |
| ⑦ | Qty. (4) | Conical washer<br>1/2"                 |  |
| ⑧ | Qty. (2) | Spacer<br>.250" x 1.50" x 3.00"        |  |
| ⑨ | Qty. (1) | Spacer<br>.375" x 1.50" x 3.00"        |  |
| ⑩ | Qty. (3) | Bolt<br>M12x1.75x40 CL 8.8             |  |



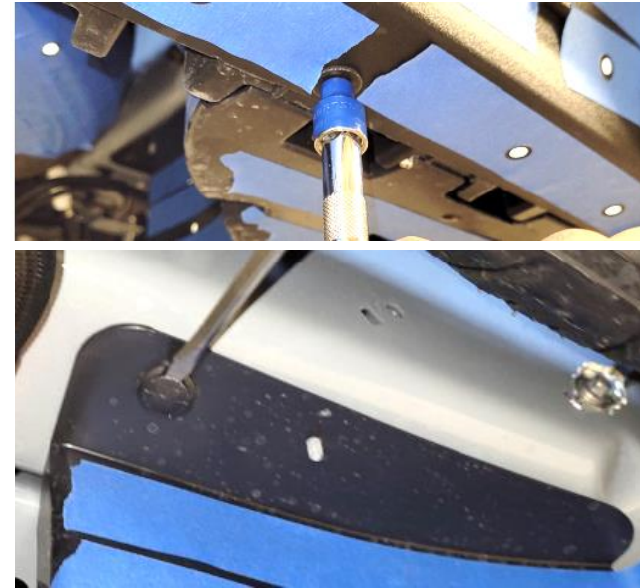
- Lower exhaust muffler:** Use soapy water to lubricate exhaust rubber hangers. Using exhaust removal pliers, remove (2) rubber hangers. **Note:** Be sure to support exhaust before removing rubber hangers.
- Remove bottom appearance panel:** Using 7 mm socket and flat head screwdriver, remove (8) screws and (1) rivets from bottom appearance panel on passenger side of vehicle. Return (2) screws to vehicle owner.
- Remove Bolts:** Using 19 mm socket, remove (2) M12 bolts from bottom surface of chassis both side of vehicle both sides of vehicle, see **Figure 3**.
- Install hitch:** **a)** Feed (1) carriage bolt ① and (1) spacer ④ through the access hole using the pull wires ⑤ both side of vehicle, see **Figure 1**. Leave pull wires attached. Raise the hitch and feed pull wire previously installed through hitch bracket slot. Remove pull wires and loosely install (1) 7/16" conical washer ③ and (1) 7/16" hex nut ② to hitch both sides. **b)** Using (3) spacers ⑧ ⑧ ⑨, insert between offset bracket tab and mounting surface and loosely secure hitch using (1) M12 bolt ⑥ and (1) 1/2" conical washer ⑦ on driver side, see **Figure 1**. **c)** Using (3) M12 bolts ⑩ and (3) 1/2" conical washers ⑦, loosely install into remaining (3) holes to secure hitch to vehicle.
- Tighten all M12 fasteners with torque wrench to 68 Ft.-Lb (92 N\*M).**
- Tighten all 7/16" fasteners with torque wrench to 50 Ft.-Lb. (68 N\*M).**
- Trim appearance panel:** Using die grinder, trim area shown in **Figure 2**. Reinstall appearance panel using (6) screws and (1) rivet removed in step 2.
- Reinstall the rubber hangers and exhaust muffler.

**Proper torque is needed to keep the hitch secure to the vehicle when towing.**

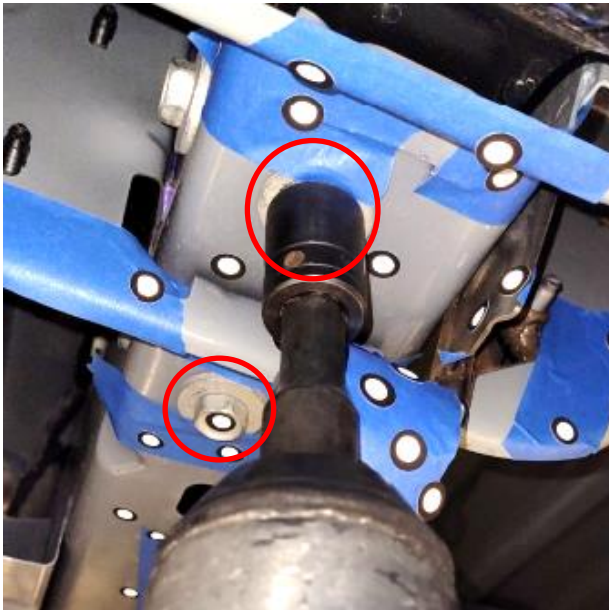
1. **Lower exhaust muffler:** Use soapy water to lubricate exhaust rubber hangers. Using exhaust removal pliers, remove (2) rubber hangers. Note: Be sure to support exhaust before removing rubber hangers.



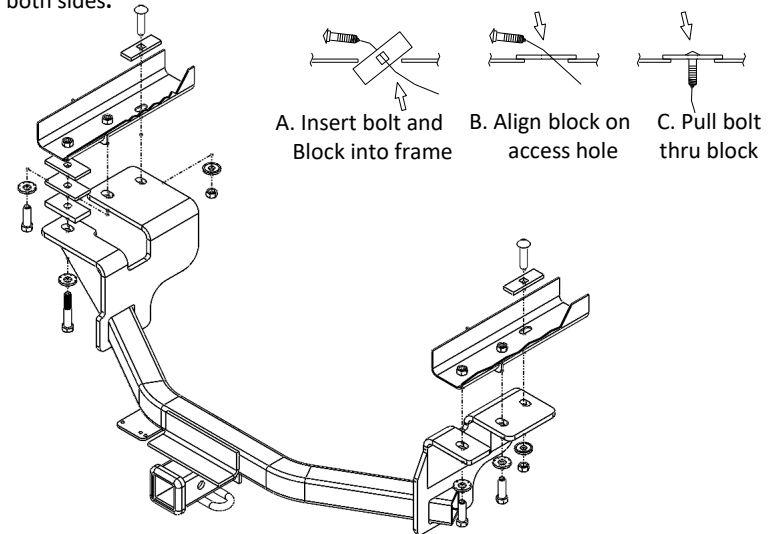
2. **Remove bottom appearance panel:** Using 7 mm socket and flat head screwdriver, remove (8) screws and (1) rivets from bottom appearance panel on passenger side of vehicle. Return (2) screws to vehicle owner.



3. **Remove Bolts:** Using 19 mm socket, remove (2) M12 bolts from bottom surface of chassis both side of vehicle both sides of vehicle.



4. **Install hitch:** a) Feed (1) carriage bolt ① and (1) spacer ④ through the access hole using the pull wires ⑤ both side of vehicle. Leave pull wires attached. Raise the hitch and feed pull wire previously installed through hitch bracket slot. Remove pull wires and loosely install (1) 7/16" conical washer ③ and (1) 7/16" hex nut ② to hitch both sides.



4. b) Using (3) spacers ⑧ ⑧ ⑨, insert between offset bracket tab and mounting surface and loosely secure hitch using (1) M12 bolt ⑥ and (1) 1/2" conical washer ⑦ on driver side.




4. c) Using (3) M12 bolts ⑩ and (3) 1/2" conical washers ⑦, loosely install into remaining (3) holes to secure hitch to vehicle.



5. **Tighten all M12 fasteners with torque wrench to 68 Ft.-Lb. (92 N\*M).**  
6. **Tighten all 7/16" fasteners with torque wrench to 50 Ft.-Lb. (68 N\*M).**

7. **Trim appearance panel:** Using die grinder, trim area shown. Reinstall appearance panel using (6) screws and (1) rivet removed in step 2.

 Proper torque is needed to keep the hitch secure to the vehicle when towing.

8. Reinstall the rubber hangers and exhaust muffler.

