

WARNING

To prevent **SERIOUS INJURY, DEATH** or **PROPERTY DAMAGE**:

- **ALWAYS** read, understand and follow warnings and instructions for your hitch **BEFORE** installation. Keep for future reference.
- **DO NOT** cut, weld or modify this receiver.
- **CHECK** all fasteners are tight and your hitch is securely mounted to your vehicle periodically.
- **ALWAYS** read, understand and follow all warnings and instructions for your vehicle and for other accessories you will use with your hitch **BEFORE** use.
- **LOAD** the trailer heavier in front.
- **DO NOT** exceed lower of towing vehicle manufacturer's rating or:

Hitch Type	Max Gross Trailer Weight	Max Tongue Weight
Weight Carrying	2000 Lb. (907 kg)	300 Lb. (136 kg)
Weight Distributing	N/A	N/A

- **ALWAYS** wear your seatbelt.
- **SLOW DOWN** when towing, **NEVER** exceed any posted speed limit.
- If **EXCESS SWAY** occurs, take your foot off the gas pedal and hold the steering wheel as steady as possible. **DO NOT** apply your brakes and **DO NOT** speed up.

Applications:

Years	Make	Models
2018-Current	Nissan	Kicks

*Visit our website for the most up to date information regarding application years and trim levels.

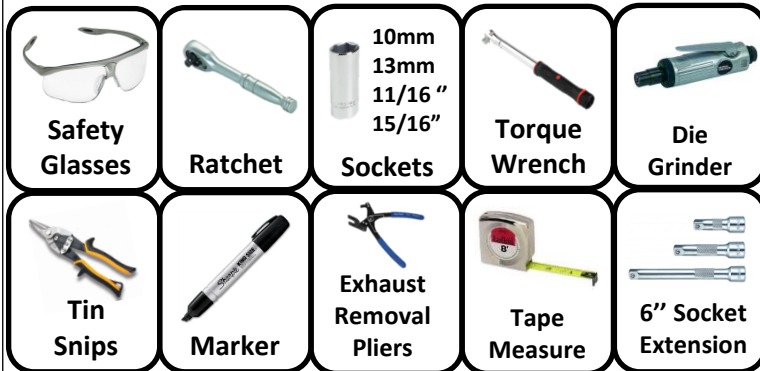
Installation Time: 45 min

The time listed above is the average time for professional installers. If you do not feel comfortable performing this installation on your own or are in need of assistance, please contact a professional installer.



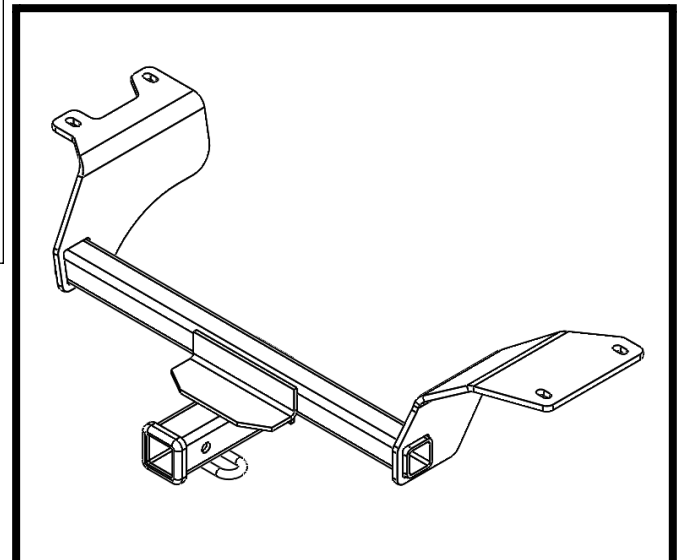
Representative Vehicle Photo

Equipment Required:



DO NOT EXCEED LOWER OF TOWING VEHICLE MANUFACTURER'S RATING OR:

Hitch Type	Max Gross Trailer Weight	Max Tongue Weight
Weight Carrying	2000 Lb. (907kg)	300 Lb. (136 kg)
Weight Distributing	N/A	N/A



Hitch Illustration

Always wear SAFETY GLASSES when installing hitch

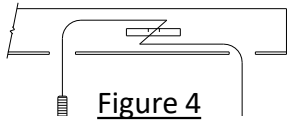
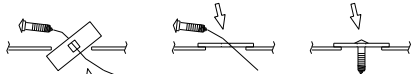


Figure 4



A. Insert bolt and Block into frame
B. Align block on access hole
C. Pull bolt thru block

Figure 5

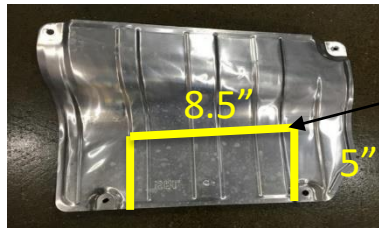


Figure 2

Trim

Installation Instructions

PART NUMBERS: 76518, 84518, CQT76518

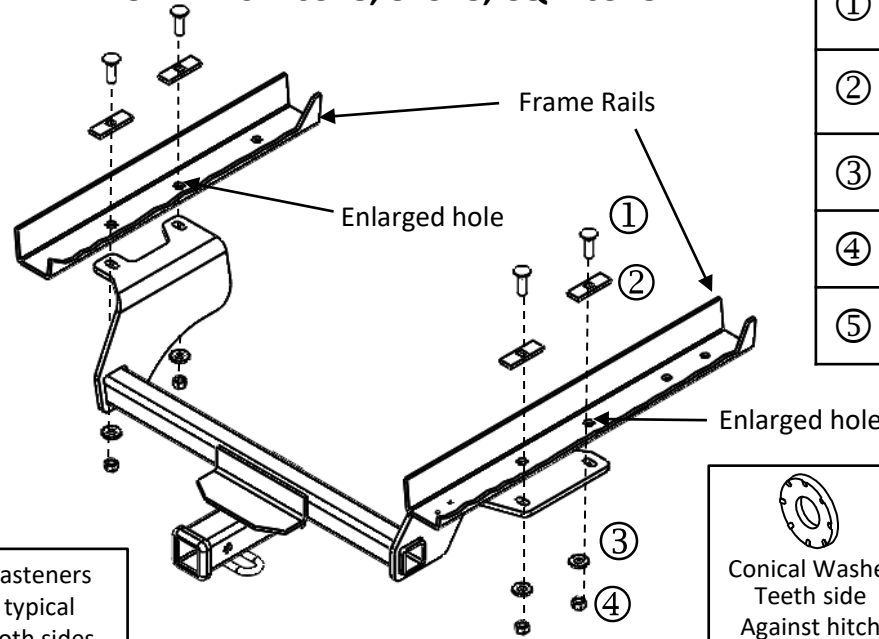
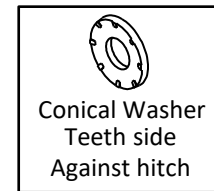


Figure 1



Fastener Kit: 76518F

①	Qty. (4)	Carriage Bolt 7/16"-14 x 1.50 GR5	
②	Qty. (4)	Spacer .250 x .875 x 3.00	
③	Qty. (4)	Conical washer 7/16"	
④	Qty. (4)	Hex Nut 7/16"-14 GR2	
⑤	Qty. (4)	Fish Wire 7/16"	

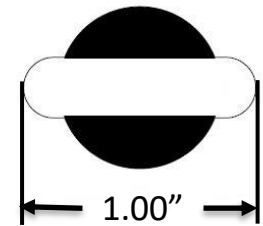


Figure 3

- 1. Lower Muffler** - Using exhaust removal pliers, remove the (2) rearmost rubber exhaust hangers. Spraying a lubricant will help the removal process. Note: Be sure the exhaust is supported before removing from rubber hangers to prevent damage.
- 2. Remove Heat Shield** - Remove (4) metal fasteners that hold the heat shield in place with 15/16" socket. Take the heat shield off and trim the area marked in Fig 2. NOTE: All dimensions are approximate, confirm fit prior to trimming.
- 3. Lower Carbon Canister** - Lower the carbon canister from driver side frame by removing the rearmost (1) M8 bolt using a 10mm socket and allowing the canister to hang. NOTE: If present remove frame rail plug, to access rear mounting point on the driver side.
- 4. Enlarge attachment holes** - Using die grinder, enlarge the forward most attachment hole of driver and passenger side frame rails to insert carriage block and bolt. see Figure 3.
- 5. Install carriage bolts and spacers** - Install spacer block and carriage bolt into rearward attachment holes in the frame through the enlarged holes on both sides using fish wire per Fig. 4, leave the fishwires attached. Install spacer block and carriage bolt into forward attachment holes in the frame through the enlarged holes on both sides using fish wire per Fig. 5, leave the fishwires attached.
- 6. Reinstall heat shield** - Reinstall the trimmed heat shield.
- 7. Install hitch** - Raise the hitch into position, line up the hitch slots with the attachment holes and install the nut and conical washer (teeth side toward hitch) on both sides and hand tighten them as shown Fig 1.
- 8. Center Hitch** - Center the hitch on the vehicle as close as possible.
- 9. Tighten Fasteners** - **Tighten all 7/16"-14 fasteners with torque wrench to 50 Lb.-Ft. (68N*M)**
 ⚠ Proper torque is needed to keep the hitch secure to the vehicle when towing.
- 10. Reinstall Canister** - Reinstall the black carbon canister removed in step 3 using the original M8 bolt.
- 11. Reinstall Exhaust** - Reinstall exhaust into vehicle position by re-attaching the exhaust to the rubber exhaust hangers.

1. Lower Muffler - Using exhaust removal pliers, remove the (2) rearmost rubber exhaust hangers. Spraying a lubricant will help the removal process. Note: Be sure the exhaust is supported before removing from rubber hangers to prevent damage.



2. Remove Heat Shield - Remove (4) metal fasteners that hold the heat shield in place with 15/16" socket. Take the heat shield off and trim the area marked in Figure 3.

NOTE: All dimensions are approximate, confirm fit prior to trimming.

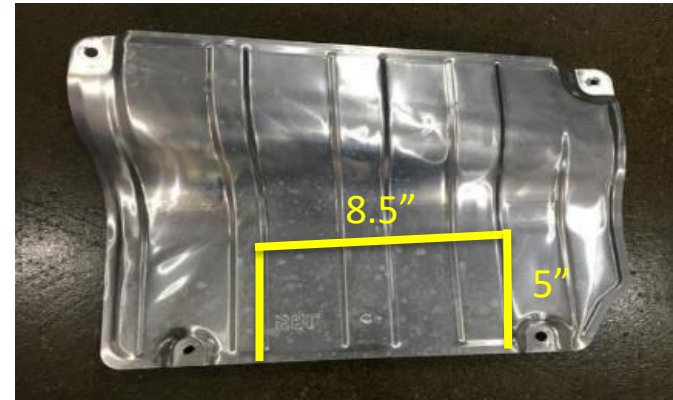
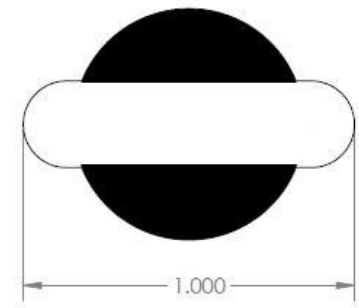


Figure 2

3. Lower Carbon Canister - Lower the carbon canister from driver side frame by removing the rearmost (1) M8 bolt using a 10mm socket and allowing the canister to hang. NOTE: If present remove frame rail plug, to access rear mounting point on the driver side.



4. Enlarge attachment holes - Using die grinder, enlarge the forward attachment hole of driver and passenger side frame rails to insert carriage block and bolt. see Figure 3.



5. Install carriage bolts and spacers – Install spacer block and carriage bolt into rearward attachment holes in the frame through the enlarged holes on both sides using fish wire per Fig. 4, leave the fishwires attached. Install spacer block and carriage bolt into forward attachment holes in the frame through the enlarged holes on both sides using fish wire per Fig. 5, leave the fishwires attached.



6. Reinstall heat shield – Reinstall the trimmed heat shield.

7. Install hitch – Raise the hitch into position, line up the hitch slots with the attachment holes and install the nut and conical washer (teeth side toward hitch) on both sides and hand tighten them as shown Fig 1. Note: on passenger side sandwich the heat shield between the frame rail and the hitch.



8. Center Hitch - Center the hitch on the vehicle as close as possible.



9. Tighten Fasteners - **Tighten all 7/16"-14 fasteners with torque wrench to 50 Lb.-Ft. (68N*M)**

⚠ Proper torque is needed to keep the hitch secure to the vehicle when towing.



10. Reinstall Canister - Reinstall the black carbon cannister removed in step 3 using the original M8 bolt.



11. Reinstall Exhaust - Reinstall exhaust into vehicle position by re-attaching the exhaust to the rubber exhaust hangers.

