



Installation Instructions

PART NUMBERS: 76320, 84320, CQT76320

WARNING

To prevent **SERIOUS INJURY, DEATH** or **PROPERTY DAMAGE**:

- **ALWAYS** read, understand and follow warnings and instructions for your hitch **BEFORE** installation. Keep for future reference.
- **DO NOT** cut, weld or modify this receiver.
- **CHECK** all fasteners are tight and your hitch is securely mounted to your vehicle periodically.
- **ALWAYS** read, understand and follow all warnings and instructions for your vehicle and for other accessories you will use with your hitch **BEFORE** use.
- **LOAD** the trailer heavier in front.
- **DO NOT** exceed lower of towing vehicle manufacturer's rating or:

Hitch Type	Max Gross Trailer Weight	Max Tongue Weight
Weight Carrying	6000 lb. (2724 kg)	900 lb. (409 kg)
Weight Distributing	N/A	N/A

- **ALWAYS** wear your seatbelt.
- **SLOW DOWN** when towing, **NEVER** exceed any posted speed limit.
- If **EXCESS SWAY** occurs, take your foot off the gas pedal and hold the steering wheel as steady as possible. **DO NOT** apply your brakes and **DO NOT** speed up.

Installation Instructions

PART NUMBERS: 76320, 84320, CQT76320

Applications:

Years	Make	Models
2020-Current*	Ford	Explorer

*Visit our website for the most up to date information regarding application years and trim levels.

Installation Time: **40 min**

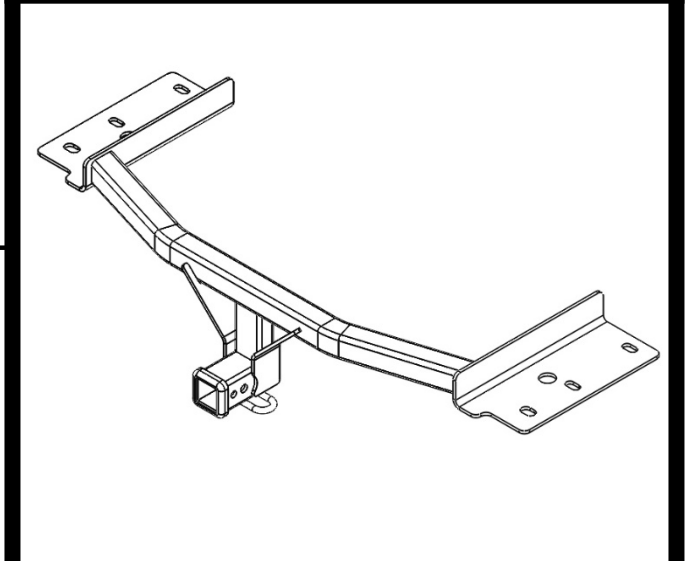
The time listed above is the average time for professional installers. If you do not feel comfortable performing this installation on your own or are in need of assistance, please contact a professional installer.

Equipment Required:

		7mm 10mm 21mm		
Safety Glasses	Ratchet	Sockets	Tape Measure	Tin Snips
Exhaust Removal Pliers	6" Socket Extension	Torque Wrench	Marker	Flat Head Screwdriver



Representative Vehicle Photo



Hitch Illustration

**DO NOT EXCEED LOWER OF TOWING VEHICLE
MANUFACTURER'S RATING OR:**

Hitch Type	Max Gross Trailer Weight	Max Tongue Weight
Weight Carrying	6000 lb. (2724 kg)	900 lb. (409 kg)
Weight Distributing	N/A	N/A



Always wear SAFETY GLASSES when installing hitch

Installation Instructions

PART NUMBERS: 76320, 84320, CQT76320

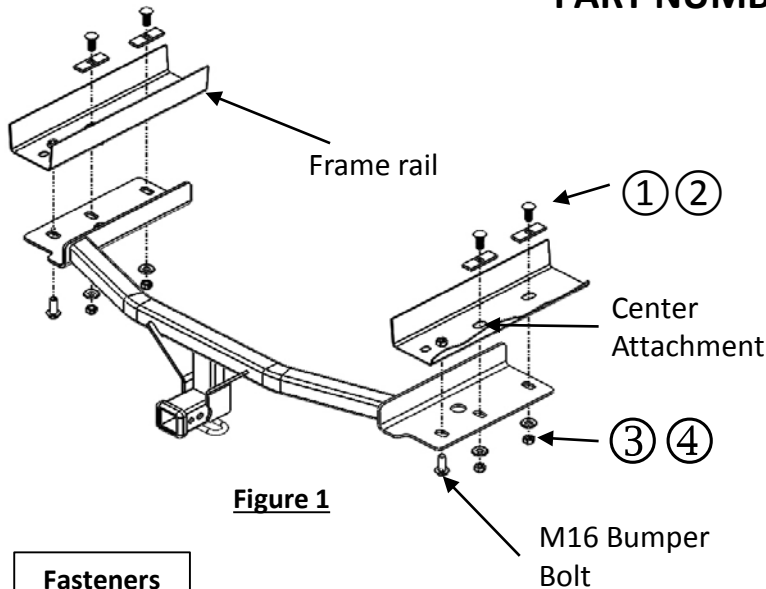


Figure 1

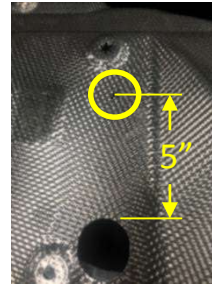


Figure 2

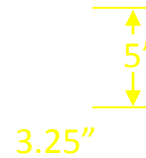







Figure 3

Fasteners typical both sides



Conical washer teeth side against hitch

Fastener Kit: 76320F

①	Qty. (4)	Carr. Bolt 1/2-13x1.50" GR5 
②	Qty. (4)	Spacer .250"x1"x 3" Part #: 3022 
③	Qty. (4)	Conical washer 1/2" Part #: 01292008 
④	Qty. (4)	Hex nut 1/2", GR5 
⑤	Qty. (4)	Pullwire 1/2"- 13 Part #: 5482 

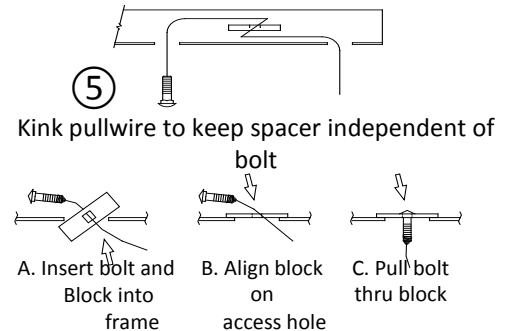


Figure 4

- Remove underbody panel:** If applicable, using M7 socket and screwdriver remove the screws and plastic push rivets that hold the underbody panel in place. Remove the underbody panel between the mufflers. Return to vehicle owner or trim to fit and reinstall. Note: Extensive trimming would be required.
- Lower Exhaust** – Using a 10mm socket remove the bolt from the exhaust hanger on the outboard side of the framerail, push hanger up and outward to remove from the framerail. Using exhaust hanger removal pliers, remove the rubber exhaust hanger near the rear differential. Be sure to support the exhaust to prevent damage. Set fasteners aside for reinstallation.
- Remove heat shields** - Using a 10mm socket remove the nuts holding the heat shield, using a 7mm socket remove the screw holding the heat shield to the wheel well liner, remove the heat shield. Cut a 1.5" hole forward of the center attachment in the heat shield to clear the middle fastener for the hitch, see **Fig. 2**. Set fasteners aside for reinstallation.
- Remove M16 bumper bolt** – Using a 21mm socket remove the bumper bolt from the bottom of the framerail. Set aside for reinstallation.
- Remove rearmost fascia fasteners** – Remove the plastic push rivets from the rearmost lower edge of the fascia. Set fasteners aside for reinstallation.
- Trim fascia** – Check for sensors, wires etc. on the inside of fascia prior to trimming. Find the center of the fascia and trim the vehicle fascia per **Fig. 3**. *Dimension are approximate.
- Install hitch** – Using the supplied pullwires ⑤ install the carriage bolts ① and spacers ② into the vehicle frame through the center attachment, see **Fig. 4**, leave pullwires attached. Make sure weldnuts are free from rust and debris. Raise the hitch into position and align holes in hitch bracket to the frame rail weldnuts guiding the pullwire ends through holes in the hitch bracket and loosely reinstall the M16 bumper bolts removed in step 4. Remove pullwires, install conical washers ③ (teeth side toward hitch) and nuts ④, see **Figure 1**.
- Tighten all M16 fasteners with torque wrench to 146 Ft.Lb. (198 N*M), 1/2" fasteners to 75 Ft.Lb. (102 N*M)**



Proper torque is needed to keep the hitch secure to the vehicle when towing.

- Reinstall modified heat shields** – Reinstall the modified heat shields back into place over the hitch bracket using all fasteners removed earlier. Reinstall fascia fasteners.
- Reinstall exhaust** – Raise exhaust back into position and reinstall all exhaust hangers and fascia fasteners.

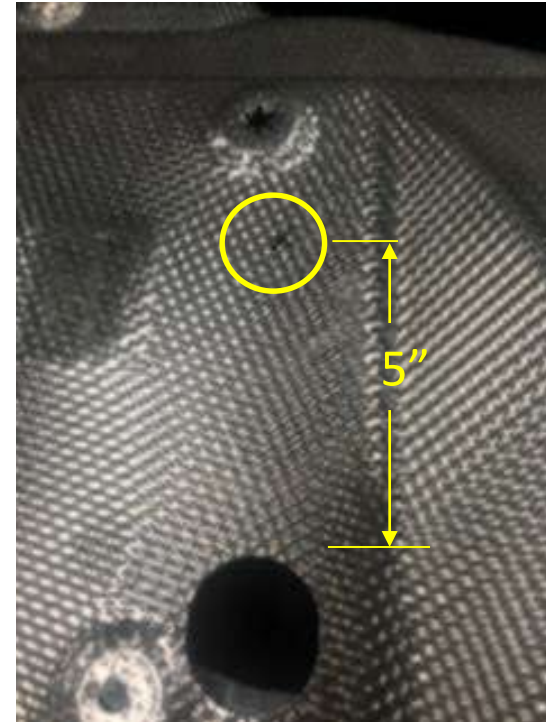
1. Remove underbody panel: If applicable, using M7 socket and screwdriver remove the screws and plastic push rivets that hold the underbody panel in place. Remove the underbody panel between the mufflers. Return to vehicle owner or trim to fit and reinstall. Note: Extensive trimming would be required.



2. Lower Exhaust – Using a 10mm socket remove the bolt from the exhaust hanger on the outboard side of the framerateil, push hanger up and outward to remove from the framerateil. Using exhaust hanger removal pliers, remove the rubber exhaust hanger near the rear differential. Be sure to support the exhaust to prevent damage. Set fasteners aside for reinstallation.



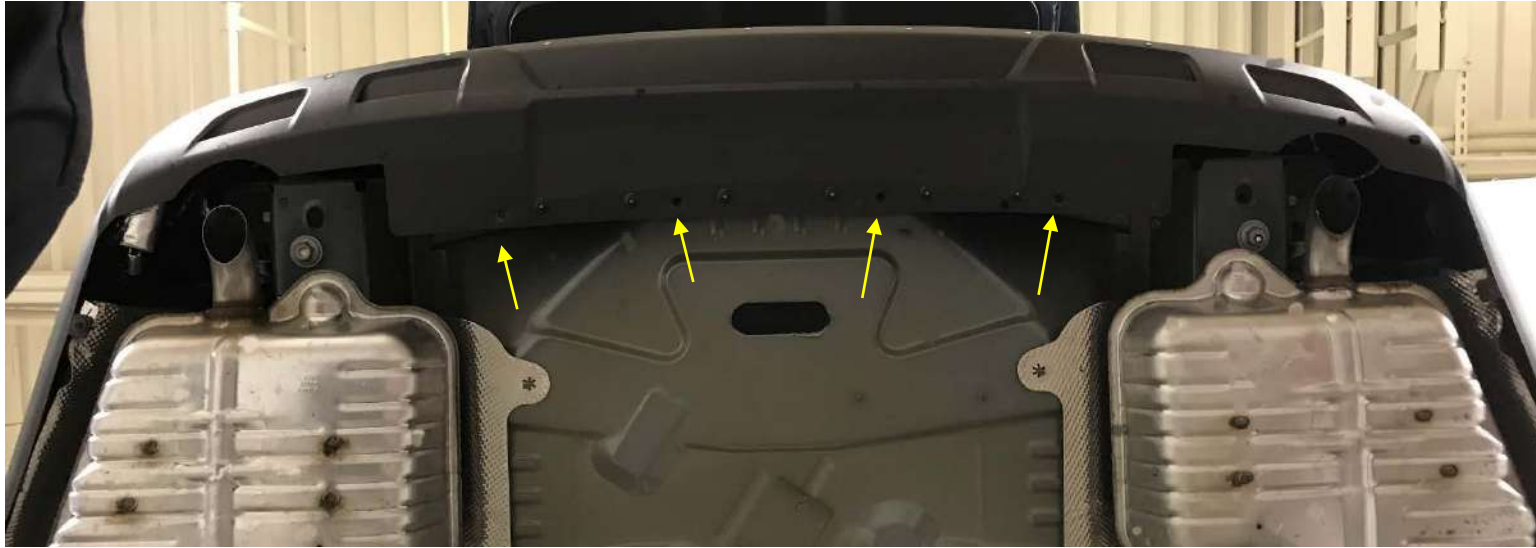
3. Remove heat shields - Using a 10mm socket remove the nuts holding the heat shield, using a 7mm socket remove the screw holding the heat shield to the wheel well liner, remove the heat shield. Cut a 1.5" hole forward of the center attachment in the heat shield to clear the middle fastener for the hitch, see **Fig. 2**. Set fasteners aside for reinstallation.



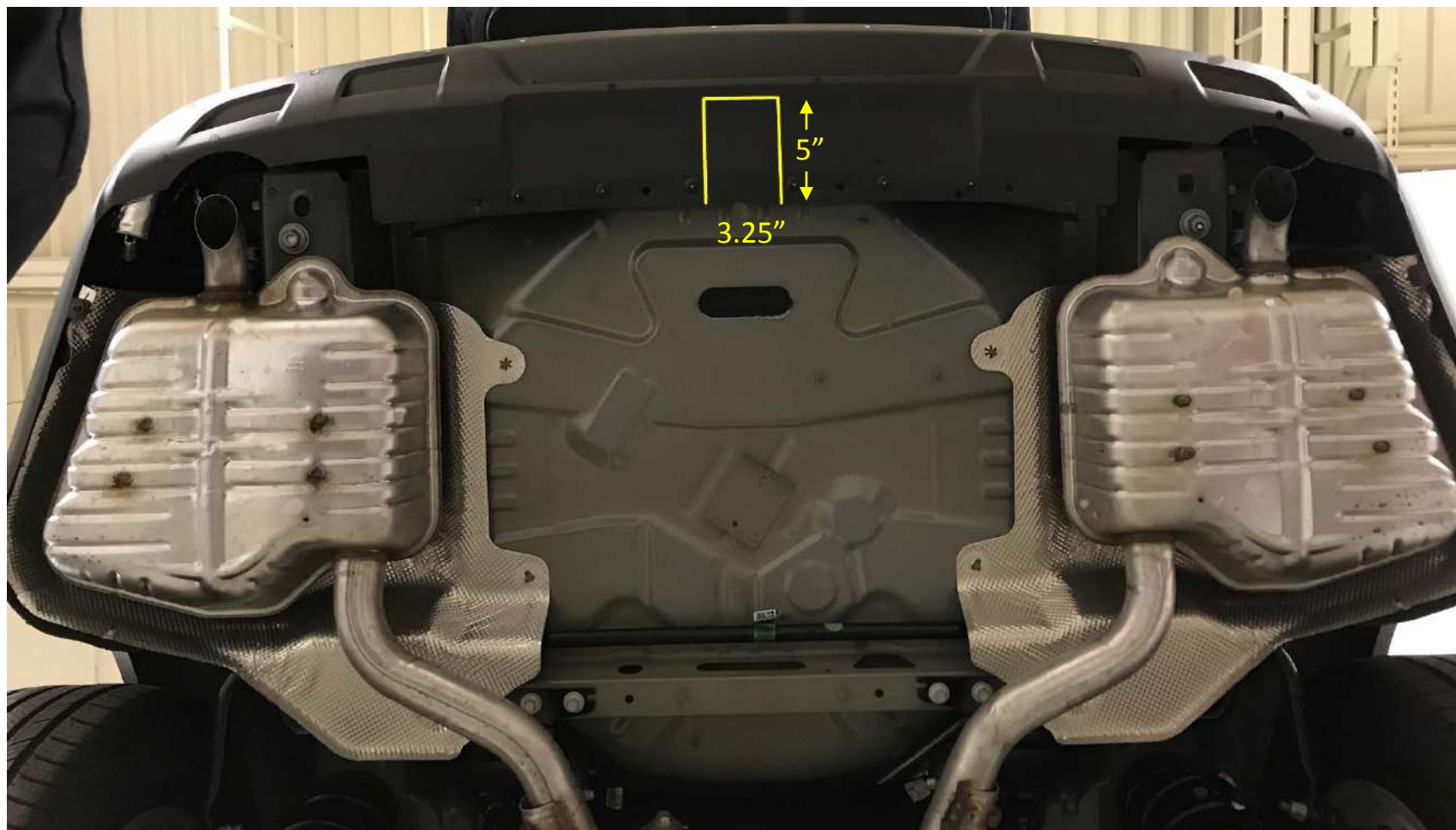
4. Remove M16 bumper bolt – Using a 21mm socket remove the bumper bolt from the bottom of the framerail. Set aside for reinstallation.



5. Remove rearmost fascia fasteners – Remove the plastic push rivets from the rearmost lower edge of the fascia.



6. Trim fascia – Check for sensors, wires etc. on the inside of fascia prior to trimming. Find the center of the fascia and trim the vehicle fascia per **Fig. 3**. *Dimension are approximate.



7. Install hitch – Using the supplied pullwires ⑤ install the carriage bolts ① and spacers ② into the vehicle frame through the center attachment, see **Fig. 4**, leave pullwires attached. Make sure weldnuts are free from rust and debris. Raise the hitch into position and align holes in hitch bracket to the frame rail weldnuts guiding the pullwire ends through holes in the hitch bracket and loosely reinstall the M16 bumper bolts removed in step 4. Remove pullwires, install conical washers ③ (teeth side toward hitch) and nuts ④, see **Figure 1**.

8. Tighten all M16 fasteners with torque wrench to 146 Ft.Lb. (198 N*M), 1/2" fasteners to 75 Ft.Lb. (102 N*M)

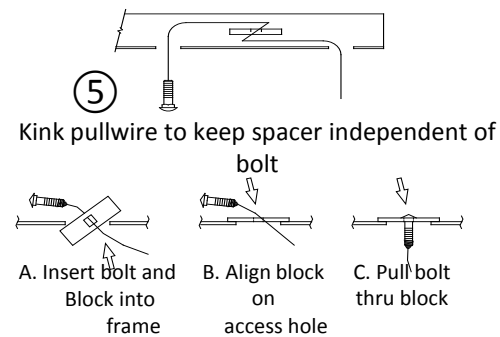


Figure 4

⚠ Proper torque is needed to keep the hitch secure to the vehicle when towing.

9. Reinstall modified heat shields – Reinstall the modified heat shields back into place over the hitch bracket using all fasteners removed earlier. Reinstall fascia fasteners.

10. Reinstall exhaust – Raise exhaust back into position and reinstall all exhaust hangers and fascia fasteners.

