



Installation Instructions

PART NUMBERS: 76260, 84260, CQT76260

WARNING

To prevent **SERIOUS INJURY, DEATH or PROPERTY DAMAGE:**

- **ALWAYS** read, understand and follow warnings and instructions for your hitch **BEFORE** installation. Keep for future reference.
- **DO NOT** cut, weld or modify this receiver.
- **CHECK** all fasteners are tight and your hitch is securely mounted to your vehicle periodically.
- **ALWAYS** read, understand and follow all warnings and instructions for your vehicle and for other accessories you will use with your hitch **BEFORE** use.
- **LOAD** the trailer heavier in front.
- **DO NOT** exceed lower of towing vehicle manufacturer's rating or:

Hitch Type	Max Gross Trailer Weight	Max Tongue Weight
Weight Carrying	6000 lb. (2724 kg)	900 lb. (409 kg)
Weight Distributing	N/A	N/A

- **ALWAYS** wear your seatbelt.
- **SLOW DOWN** when towing, **NEVER** exceed any posted speed limit.
- If **EXCESS SWAY** occurs, take your foot off the gas pedal and hold the steering wheel as steady as possible. **DO NOT** apply your brakes and **DO NOT** speed up.

Installation Instructions

PART NUMBERS: 76260, 84260, CQT76260

Applications:

Years	Make	Models
2018-Current*	Range Rover	Velar

Installation Time: 80 min

The time listed above is the average time for professional installers. If you do not feel comfortable performing this installation on your own or are in need of assistance, please contact a professional installer.



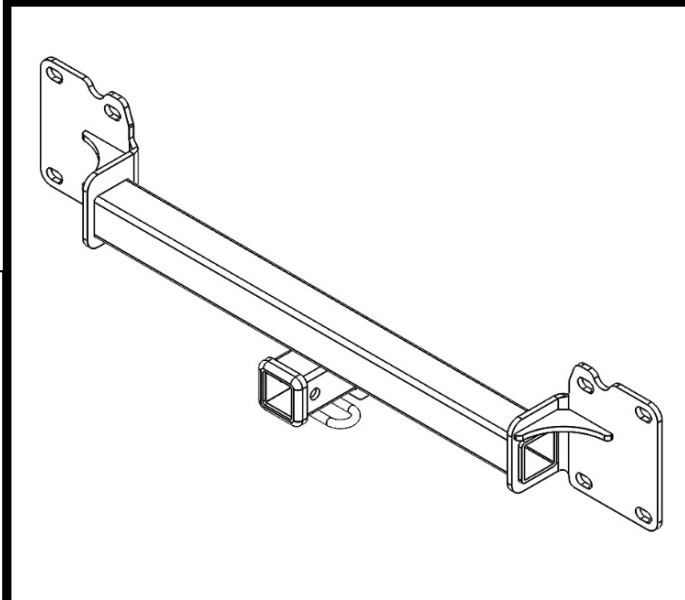
Representative Vehicle Photo

Equipment Required:

Safety Glasses	Ratchet	10 mm 18 mm 21 mm Sockets	6" Socket Extension	Phillips Screwdriver
Panel Removal Tool	Plastic Trim Tools	Torque Wrench	Flat Head Screw Driver	T15 Torx

**DO NOT EXCEED LOWER OF TOWING VEHICLE
MANUFACTURER'S RATING OR:**

Hitch Type	Max Gross Trailer Weight	Max Tongue Weight
Weight Carrying	6000 lb. (2724 kg)	900 lb. (409 kg)
Weight Distributing	N/A	N/A



Hitch Illustration

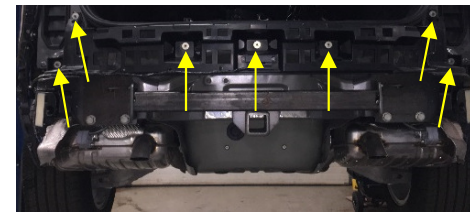
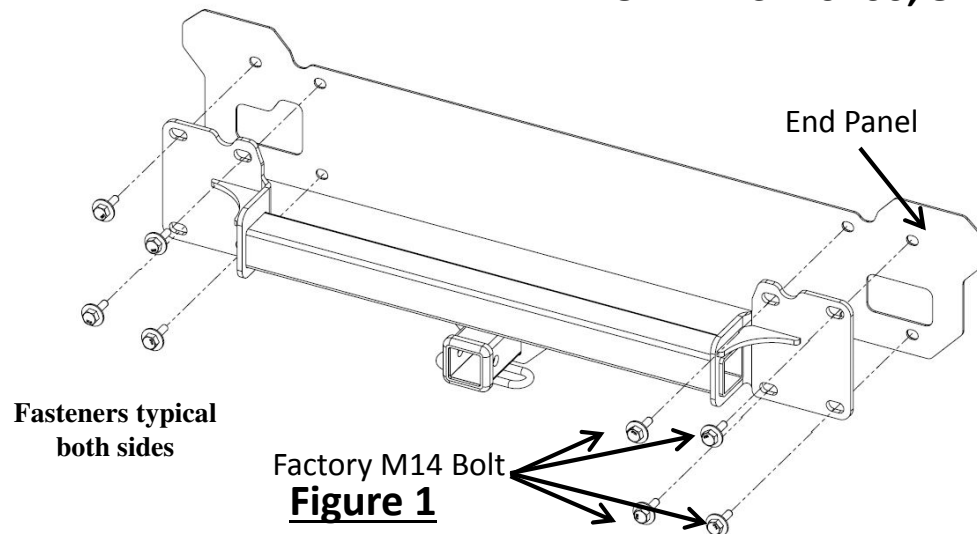
Always wear SAFETY GLASSES
when installing hitch

Installation Instructions

PART NUMBERS: 76260, 84260, CQT76260

Fastener Kit: 76260F

*No fasteners supplied in the fastener kit



- 1. Remove Fascia-** *Note: Save all fascia fasteners for reinstallation. **a)** Open the lift gate.
b. Remove the plastic cover next to the tail light (each side). Using a plastic pry tool remove the plastic rivet located below the taillight area (each side).
c. Using a large flat head screwdriver remove the screw from the tail light (each side). Pull the tail light rearward to remove and unplug the electrical connector from the tail light assembly (each side).
d. Using a 10mm socket remove the bolt at the top of the fascia near the taillight area (each side).
e. Remove the cover that runs along the liftgate opening at the top of the fascia **Fig. 2**, using a plastic pry tool to reveal plastic push rivets, remove the plastic push rivets.
f. Using a 10mm socket remove (3) bolts that attach the fascia to the underbody near the center of the vehicle.
g. Remove the hitch access panel in the middle of the fascia, remove (2) phillips head screws that hold the fascia to the vehicle.
h. Using a T15 torx loosen the top (2) screws from the wheel well trim, using a phillips screwdriver remove (2) screws inside the wheel well to remove the wheel well trim. Pull back the wheel well liner to expose (2) phillips head screws. Remove the (2) screws. See **Fig. 3**.
i. Starting from the wheel well area, gently pull the fascia away from the vehicle (be careful not to pull it too far away from the vehicle to avoid damage) work your way toward the middle from each wheel well. Unplug (2) electrical connectors from behind the fascia near the driverside wheel well.
- 2. Remove plastic panel** - Locate and remove (7) nuts using a 10mm socket. Unplug the sensor at the middle of the panel. Remove panel. See **Fig. 4**.
- 3. Lower exhaust** - While supporting the exhaust to prevent damage remove the rubber isolators from the exhaust hangers, 3 each side.
- 4. Lower heat shield** - Using a 10mm socket remove the bolts on the passenger side heat shield to expose the M14 bolts in the bottom of the frame rail.
- 5. Remove Bumper Beam** - Remove (8) 14mm bolts with a 21mm socket from the rearmost face of the bumper beam and save for hitch installation. Remove (3) M14 bolts from the passenger side frame rail using a 18mm socket. Return these (3) bolts and bumper beam to the customer.
- 6. Reinstall heat shield** - Reinstall the heat shield and raise the exhaust back into position, reattaching all exhaust isolators.
- 7. Install Hitch** - Raise the hitch into position aligning the attachment holes with the weldnuts in the end panel. Loosely reinstall the (8) M14 bolts removed earlier (4 each side).
- 8. Tighten Fasteners** - Tighten all 14mm bolts with a torque wrench to 115 Lb-Ft (156N*M)

⚠ Proper torque is needed to keep the hitch secure to the vehicle when towing.

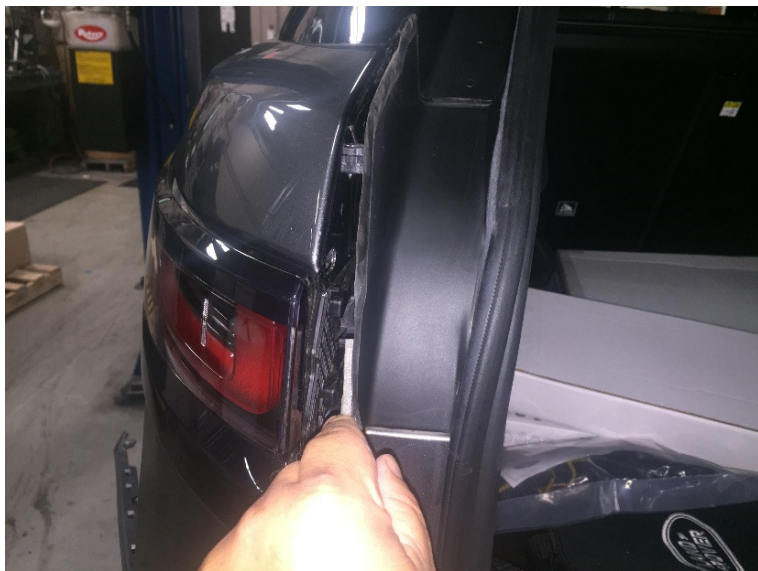
- 9. Reinstall plastic panel** - Place the plastic panel removed earlier back into position and reinstall the nuts removed earlier. Plug in the sensor.
- 10. Install Fascia** - Reversing the order in step 1 reinstall the fascia and taillights. Be sure to plug in all electrical connectors removed earlier.

*Vehicle fascia has a removable panel for hitch usage. Panel may be replaced when hitch is not in use

Note: check hitch frequently, making sure all fasteners and ball are properly tightened. If hitch is removed, plug all holes in trunk pan or other body panels to prevent entry of water and exhaust fumes. A hitch or ball which has been damaged should be removed and replaced. Observe safety precautions when working beneath a vehicle and wear eye protection. Do not cut access or attachment holes with a torch.

This product complies with safety specifications and requirements for connecting devices and towing systems of the state of New York, V.E.S.C. Regulation V-5 and SAE J684.

- 1. Remove Fascia-** *Note: Save all fascia fasteners for reinstallation. **a)** Open the lift gate.
b. Remove the plastic cover next to the tail light (each side). Using a plastic pry tool remove the plastic rivet located below the taillight area (each side).



- 1c.** Using a large flat head screwdriver remove the screw from the tail light (each side). Pull the tail light rearward to remove and unplug the electrical connector from the tail light assembly (each side).



- 1d.** Using a 10mm socket remove the bolt at the top of the fascia near the taillight area (each side). Gently pry out the plastic plug located below the bolt (each side).



- 1e.** Remove the cover that runs along the liftgate opening at the top of the fascia **Fig. 2**, using a plastic pry tool to reveal (4) plastic push rivets, remove the plastic push rivets.



1f. Using a 10mm socket remove (3) bolts that attach the fascia to the underbody near the center of the vehicle.



1g. Remove the hitch access panel in the middle of the fascia, remove (2) phillips head screws that hold the fascia to the vehicle.



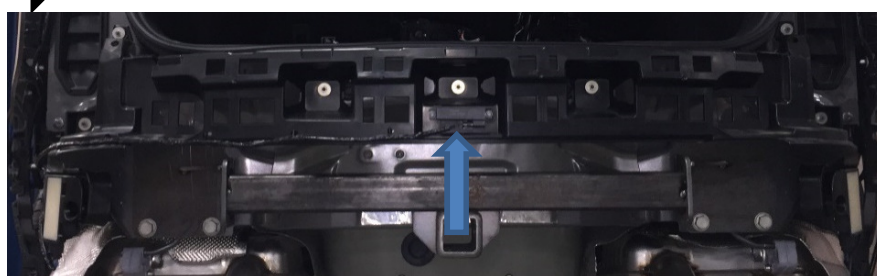
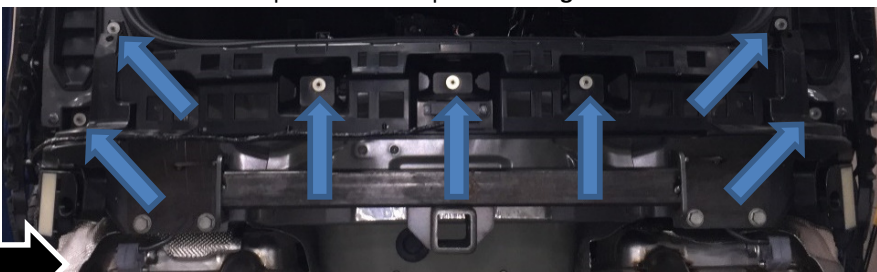
1h. Using a T15 torx loosen the top (2) screws from the wheel well trim, using a phillips screwdriver remove (2) screws inside the wheel well to remove the wheel well trim. Pull back the wheel well liner to expose (2) phillips head screws. Remove the (2) screws. See **Fig. 3.**



1 i. Starting from the wheel well area, gently pull the fascia away from the vehicle (be careful not to pull it too far away from the vehicle to avoid damage) work your way toward the middle from each wheel well. Unplug (2) electrical connectors from behind the fascia near the driverside wheel well.



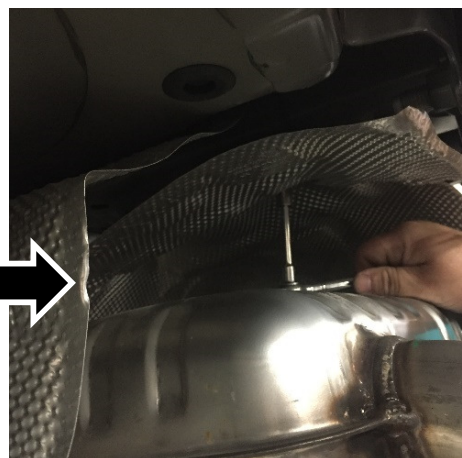
2. **Remove plastic panel** - Locate and remove (7) nuts using a 10mm socket. Unplug the sensor at the middle of the panel. Remove panel. See Fig. 4.



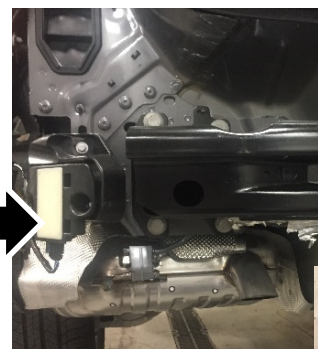
3. **Lower exhaust** - While supporting the exhaust to prevent damage remove the rubber isolators from the exhaust hangers, 3 each side.



4. **Lower heat shield** – Using a 10mm socket remove the bolts on the passenger side heat shield to expose the M14 bolts in the bottom of the frame rail.



5. **Remove Bumper Beam**- Remove (8) 14mm bolts with a 21mm socket from the rearmost face of the bumper beam and save for hitch installation. Remove (3) M14 bolts from the passenger side frame rail using a 18mm socket. Return these (3) bolts and bumper beam to the customer.



6. **Reinstall heat shield** – Reinstall the heat shield and raise the exhaust back into position, reattaching all exhaust isolators.



7. **Install Hitch**- Raise the hitch into position aligning the attachment holes with the weldnuts in the end panel. Loosely reinstall the (8) M14 bolts removed earlier (4 each side).

8. **Tighten Fasteners** - Tighten all 14mm bolts with a torque wrench to 115 Lb-Ft (156N*M)

⚠ Proper torque is needed to keep the hitch secure to the vehicle when towing.



9. **Reinstall plastic panel** - Place the plastic panel removed earlier back into position and reinstall the nuts removed earlier. Plug in the sensor.



10. **Install Fascia**- Reversing the order in step 1 reinstall the fascia and taillights. Be sure to plug in all electrical connectors removed earlier. *Vehicle fascia has a removable panel for hitch usage. Panel may be replaced when hitch is not in use

