



Installation Instructions

PART NUMBERS: 76245, 84245, CQT76245

WARNING

To prevent **SERIOUS INJURY, DEATH** or **PROPERTY DAMAGE**:

- **ALWAYS** read, understand and follow warnings and instructions for your hitch **BEFORE** installation. Keep for future reference.
- **DO NOT** cut, weld or modify this receiver.
- **CHECK** all fasteners are tight and your hitch is securely mounted to your vehicle periodically.
- **ALWAYS** read, understand and follow all warnings and instructions for your vehicle and for other accessories you will use with your hitch **BEFORE** use.
- **LOAD** the trailer heavier in front.
- **DO NOT** exceed lower of towing vehicle manufacturer's rating or:

Hitch Type	Max Gross Trailer Weight	Max Tongue Weight
Weight Carrying	4000 lb. (1816 kg)	600 lb. (272 kg)
Weight Distributing	N/A	N/A

- **ALWAYS** wear your seatbelt.
- **SLOW DOWN** when towing, **NEVER** exceed any posted speed limit.
- If **EXCESS SWAY** occurs, take your foot off the gas pedal and hold the steering wheel as steady as possible. **DO NOT** apply your brakes and **DO NOT** speed up.

Installation Instructions

PART NUMBERS: 76245, 84245, CQT76245

Applications:

Years	Make	Models
2019 - current*	Volvo	XC40

Installation Time: 70 min.

The time listed above is the average time for professional installers. If you do not feel comfortable performing this installation on your own or are in need of assistance, please contact a professional installer.



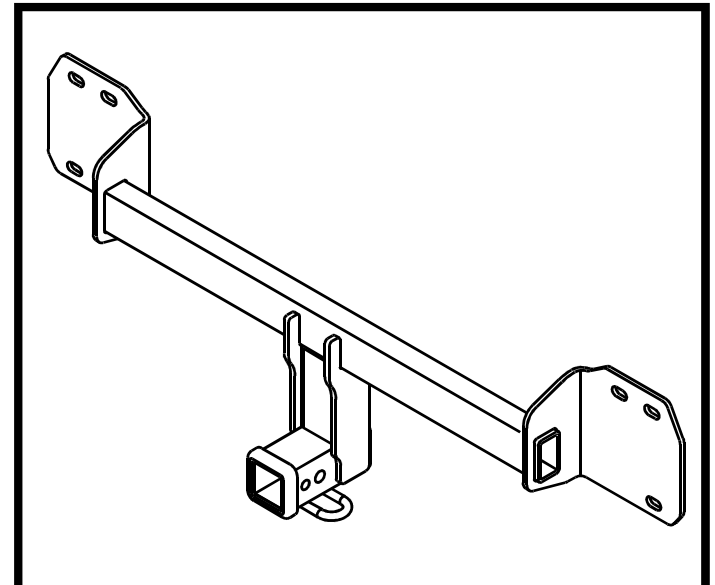
Representative Vehicle Photo

Equipment Required:

Safety Glasses	Ratchet	8mm 15mm Sockets	6" Socket Extension	T25 Torx bit Socket	Torque Wrench	Gloves
Plastic Trim Tools	Tape Measure	Marker	Utility Knife	Silicone Sealant		

**DO NOT EXCEED LOWER OF TOWING VEHICLE
MANUFACTURER'S RATING OR:**

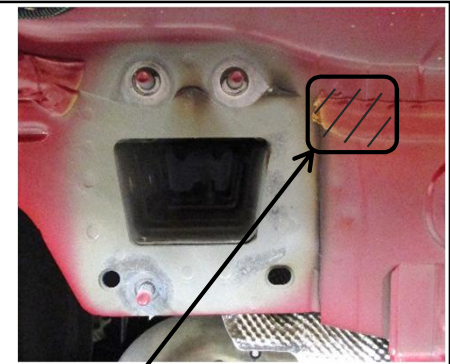
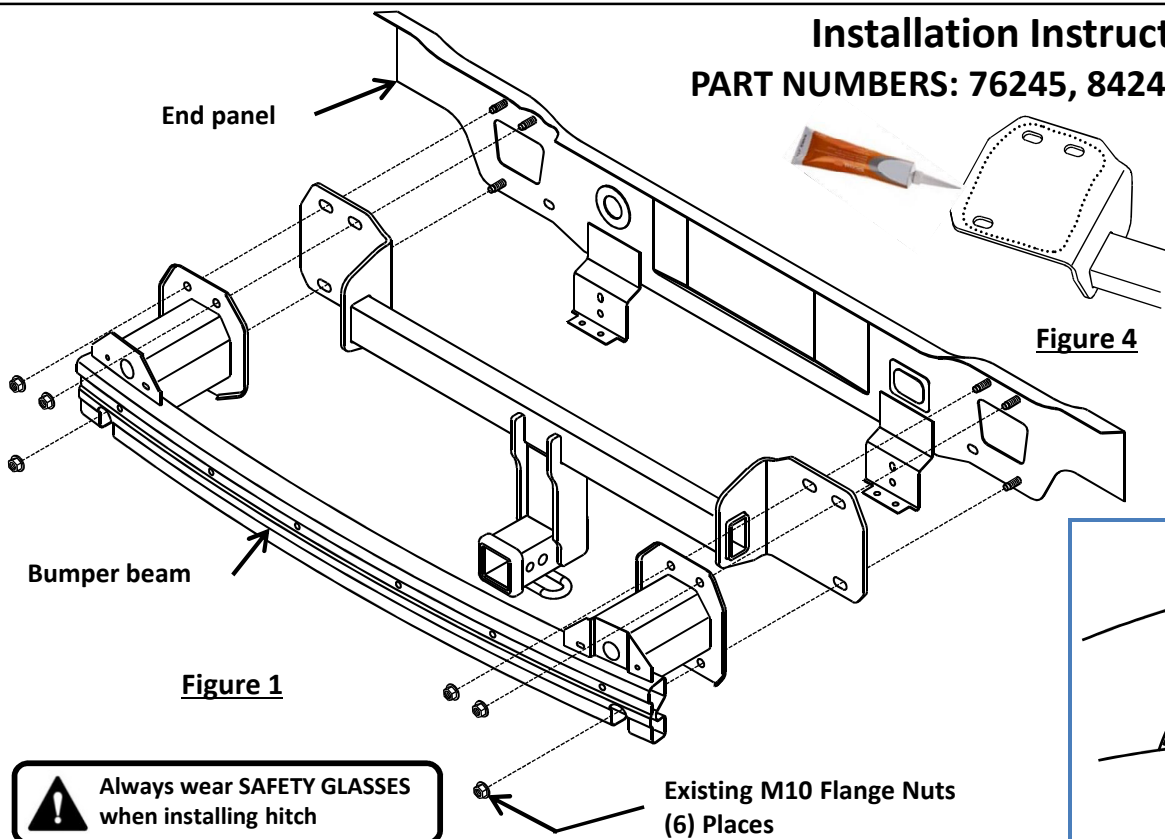
Hitch Type	Max Gross Trailer Weight	Max Tongue Weight
Weight Carrying	4000 lb. (1816 kg)	600 lb. (272 kg)
Weight Distributing	N/A	N/A



Hitch Illustration

Installation Instructions

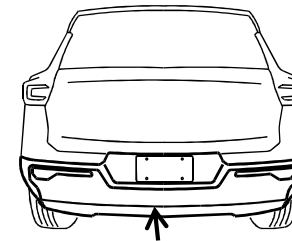
PART NUMBERS: 76245, 84245, CQT76245



Remove excess caulk

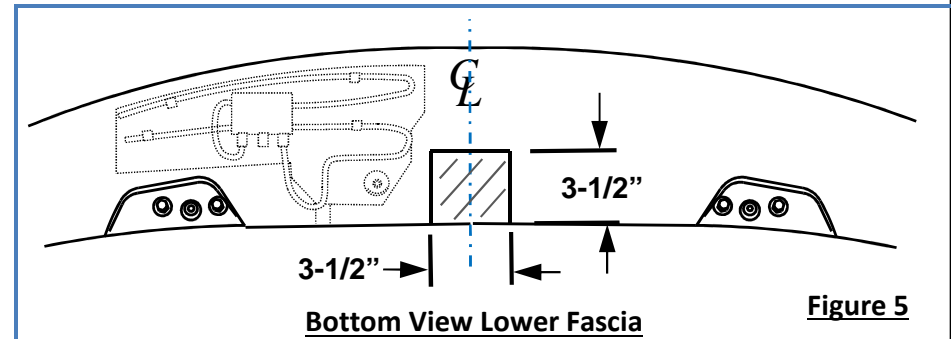
Figure 3

Figure 4




Lower fascia

Figure 2



1. Remove Lower fascia (Figure 2):

- Using a T25 torx bit, remove (5) screws holding wheel well liner to fascia, both sides.
 - Using an 8mm socket remove (4) bolts from bottom edge of fascia, (2) per side. Do not remove the (4) torx screws from bottom edge of fascia.
 - Using a plastic trim tool, remove the lower fascia from upper part of fascia starting at the outer edges near wheel wells while gently pulling rearward, release the clips holding the fascia.
 - Disconnect the back up sensor wiring harness (4) places, unplug the middle wiring plug from the hands free liftgate housing, remove the (2) lights from fascia. Unclip the wiring harness from fascia as needed and remove fascia. Carefully set fascia aside.
- Remove bumper beam** – using a 15mm socket, remove (6) M10 flange nuts from bumper beam and set bumper beam aside. **See Figure 1.**
 - Remove caulk** – using a utility knife, remove excess caulk from end panel near hitch bracket mounting surface so the bracket sits flat against the end panel, both sides. **See Figure 3.**
 - Apply sealant** - apply silicone sealant to both hitch bracket mounting surfaces. **See Figure 4.**
 - Install Hitch and Bumper beam** - Raise hitch and bumper beam into position aligning holes with studs in end panel. **See Figure 1.** Loosely reinstall the (6) existing M10 flange nuts onto the studs in end panel.
 - Tighten all M10 hex flange nuts with torque wrench to 38 Lb.-Ft. (52 N*M)**  **Proper torque is needed to keep the hitch secure to the vehicle when towing.**
 - Trim Lower fascia** - using a tape measure, marker, and utility knife, cut a notch in the bottom of lower fascia approximately 3-1/2" wide by 3-1/2" tall. **See Figure 5.**
 - Reinstall lower fascia** – reinstall the lower fascia aligning tabs in lower fascia with upper fascia. Reinstall the original fasteners and reconnect all wiring removed in step 1.

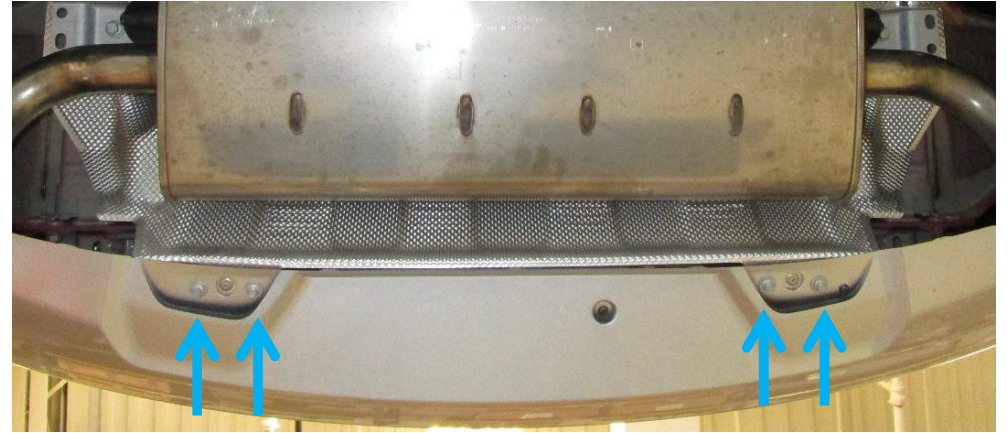
Note: check hitch frequently, making sure all fasteners and ball are properly tightened. If hitch is removed, plug all holes in trunk pan or other body panels to prevent entry of water and exhaust fumes. A hitch or ball which has been damaged should be removed and replaced. Observe safety precautions when working beneath a vehicle and wear eye protection. Do not cut access or attachment holes with a torch.

This product complies with safety specifications and requirements for connecting devices and towing systems of the state of New York, V.E.S.C. Regulation V-5 and SAE J684.

1a. Remove Lower fascia (Figure 2): Using a T25 torx bit, remove (5) screws holding wheel well liner to fascia, both sides.



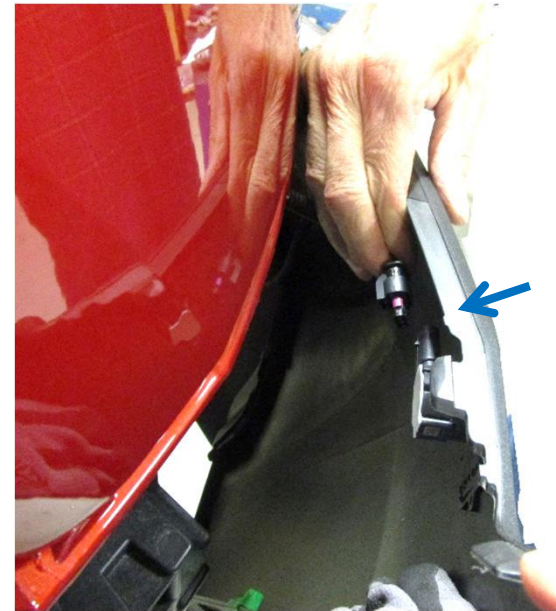
1b. Using an 8mm socket remove (4) bolts from bottom edge of fascia, (2) per side. Do not remove the (4) torx screws from bottom edge of fascia.



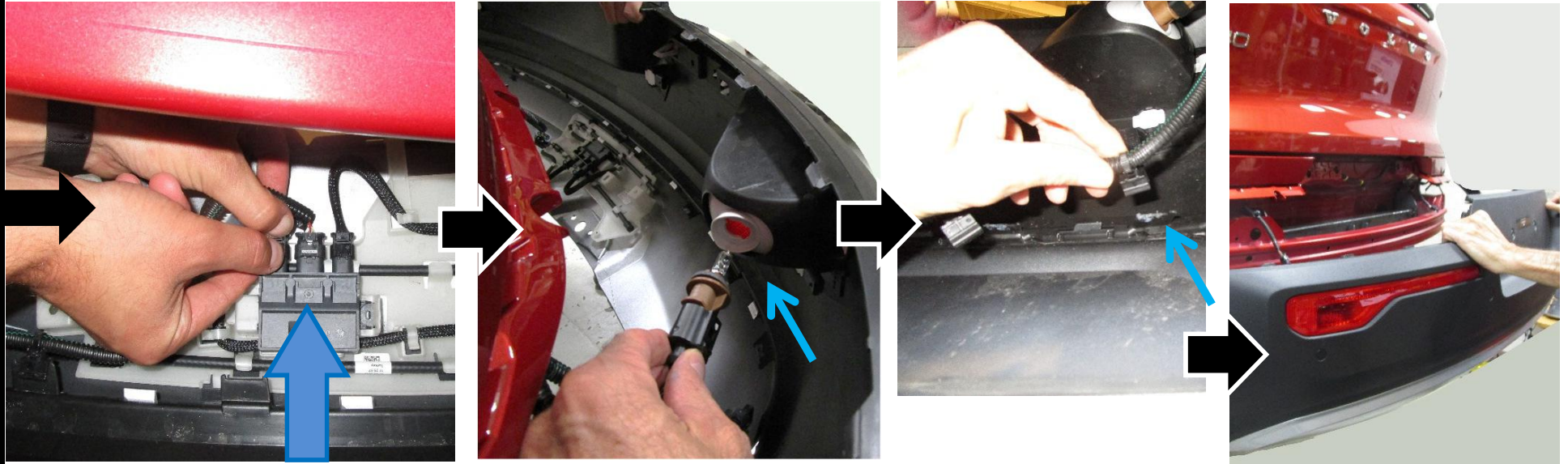
1c. Using a plastic trim tool, remove the lower fascia from upper part of fascia starting at the outer edges near wheel wells while gently pulling rearward, release the clips holding the fascia.



1d. Disconnect the back up sensor wiring harness (4) places,



1d. Continued - unplug the middle wiring plug from the hands free liftgate housing, remove the (2) lights from fascia. Unclip the wiring harness from fascia as needed and remove fascia. Carefully set fascia aside.



2. Remove bumper beam – using a 15mm socket, remove (6) M10 flange nuts from bumper beam and set bumper beam aside. See Figure 1.



3. **Remove caulk** – using a utility knife, remove excess caulk from end panel near hitch bracket mounting surface so the bracket sits flat against the end panel, both sides. **See Figure 3.**

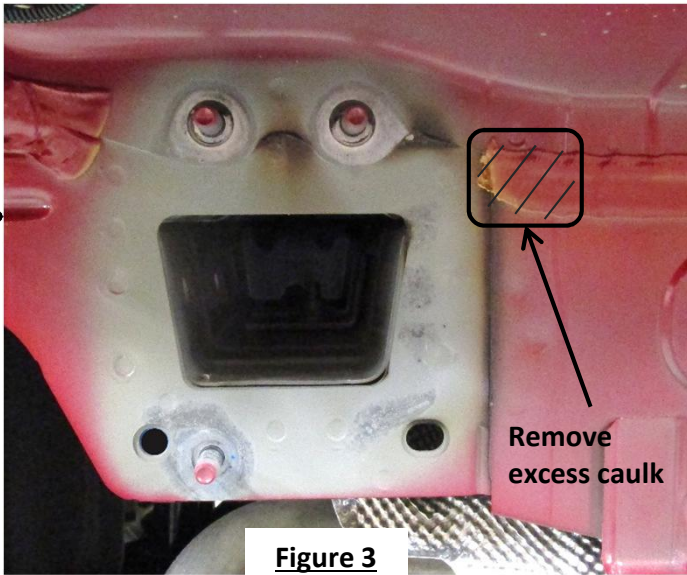


Figure 3

4. **Apply sealant** - apply silicone sealant to both hitch bracket mounting surfaces. **See Figure 4.**

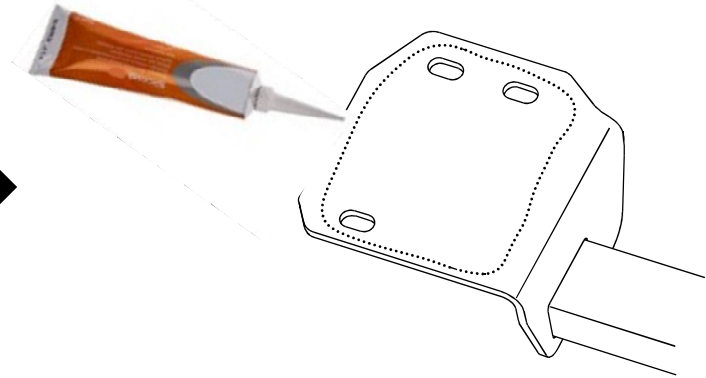
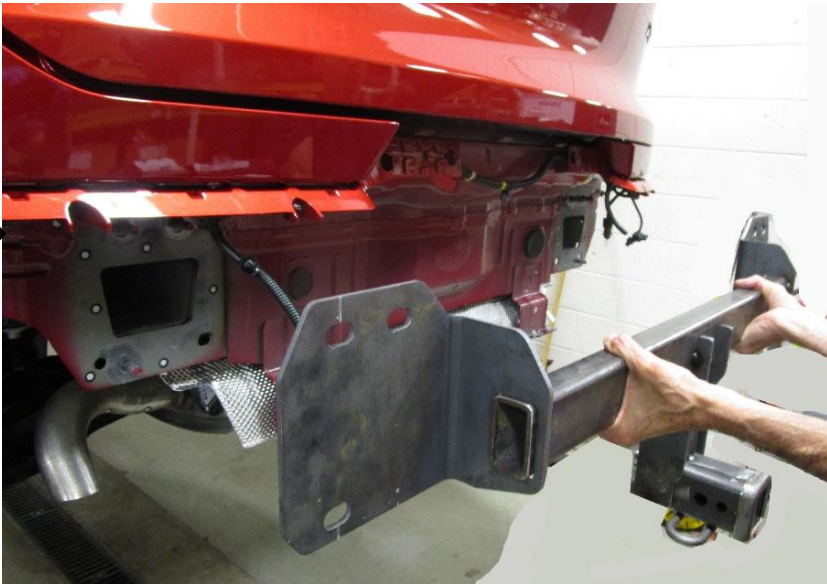



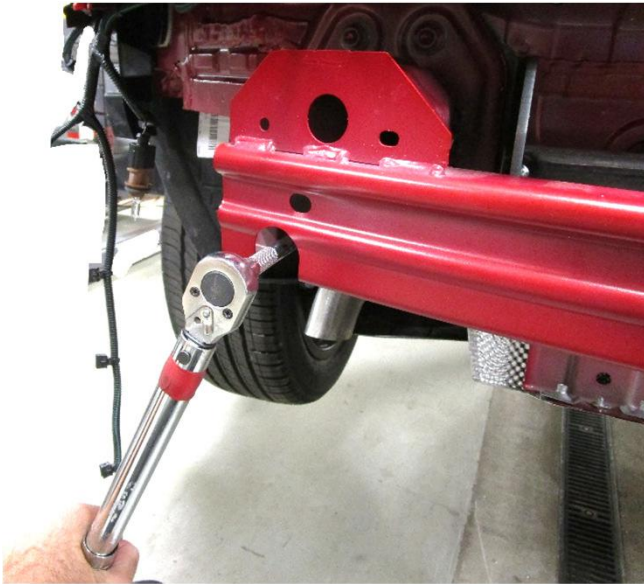
Figure 4

5. **Install Hitch and Bumper beam** - Raise hitch and bumper beam into position aligning holes with studs in end panel. **See Figure 1.** Loosely reinstall the (6) existing M10 flange nuts onto the studs in end panel.

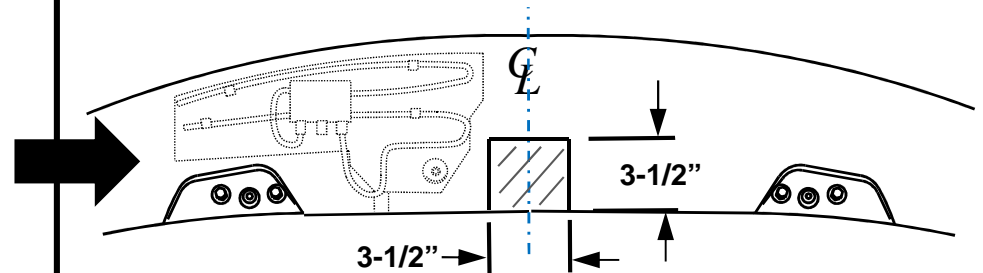


6. Tighten all M10 hex flange nuts with torque wrench to 38 Lb.-Ft. (52 N*M)

 Proper torque is needed to keep the hitch secure to the vehicle when towing.



7. Trim Lower fascia - using a tape measure, marker, and utility knife, cut a notch in the bottom of lower fascia approximately 3-1/2" wide by 3-1/2" tall. See Figure 5.



Bottom View Lower Fascia

Figure 5

8. Reinstall lower fascia – reinstall the lower fascia aligning tabs in lower fascia with upper fascia. Reinstall the original fasteners and reconnect all wiring removed in step 1.

