

Installation Instructions

PART NUMBERS: 76240, 84240, CQT76240

WARNING

To prevent **SERIOUS INJURY, DEATH** or **PROPERTY DAMAGE**:

- **ALWAYS** read, understand and follow warnings and instructions for your hitch **BEFORE** installation. Keep for future reference.
- **DO NOT** cut, weld or modify this receiver.
- **CHECK** all fasteners are tight and your hitch is securely mounted to your vehicle periodically.
- **ALWAYS** read, understand and follow all warnings and instructions for your vehicle and for other accessories you will use with your hitch **BEFORE** use.
- **LOAD** the trailer heavier in front.
- **DO NOT** exceed lower of towing vehicle manufacturer's rating or:

Hitch Type	Max Gross Trailer Weight	Max Tongue Weight
Weight Carrying	4000 lb. (1816 kg)	400 lb. (182 kg)
Weight Distributing	N/A	N/A

- **ALWAYS** wear your seatbelt.
- **SLOW DOWN** when towing, **NEVER** exceed any posted speed limit.
- If **EXCESS SWAY** occurs, take your foot off the gas pedal and hold the steering wheel as steady as possible. **DO NOT** apply your brakes and **DO NOT** speed up.

Installation Instructions

PART NUMBERS: 76240, 84240, CQT76240

Applications:

Years	Make	Models
2019-Current*	Infiniti	QX50

*Visit our website for the most up to date information regarding application years and trim levels.

Installation Time: **20 min**

The time listed above is the average time for professional installers. If you do not feel comfortable performing this installation on your own or are in need of assistance, please contact a professional installer.



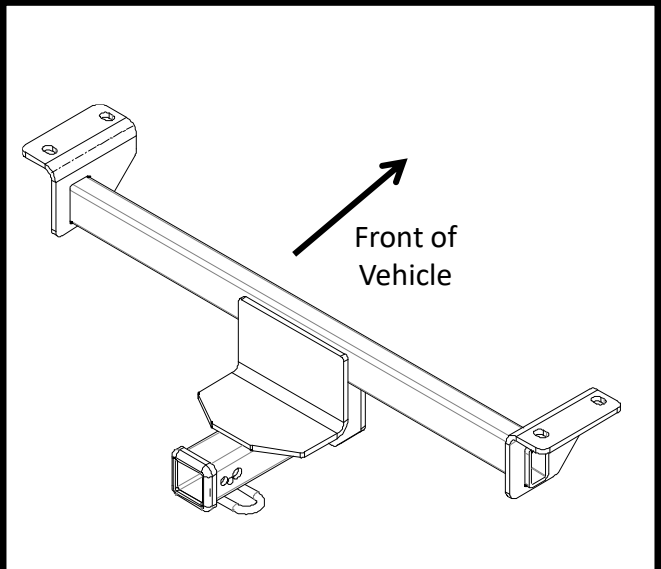
Representative Vehicle Photo

Equipment Required:



**DO NOT EXCEED LOWER OF TOWING VEHICLE
MANUFACTURER'S RATING OR:**

Hitch Type	Max Gross Trailer Weight	Max Tongue Weight
Weight Carrying	4000 lb. (1816 kg)	400 lb. (182 kg)
Weight Distributing	N/A	N/A





Hitch Illustration

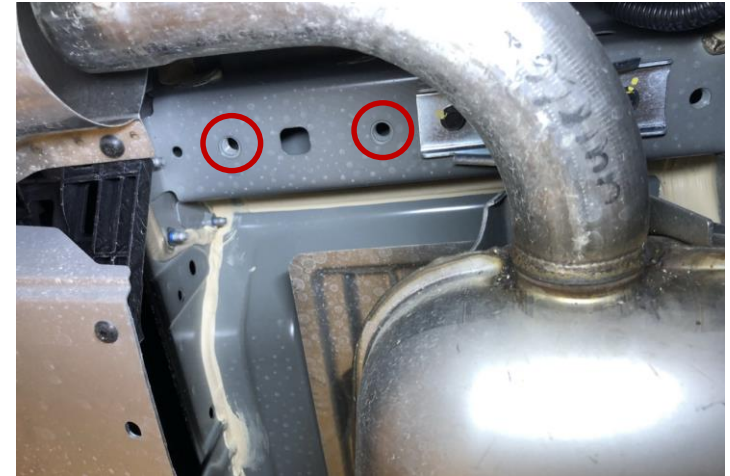
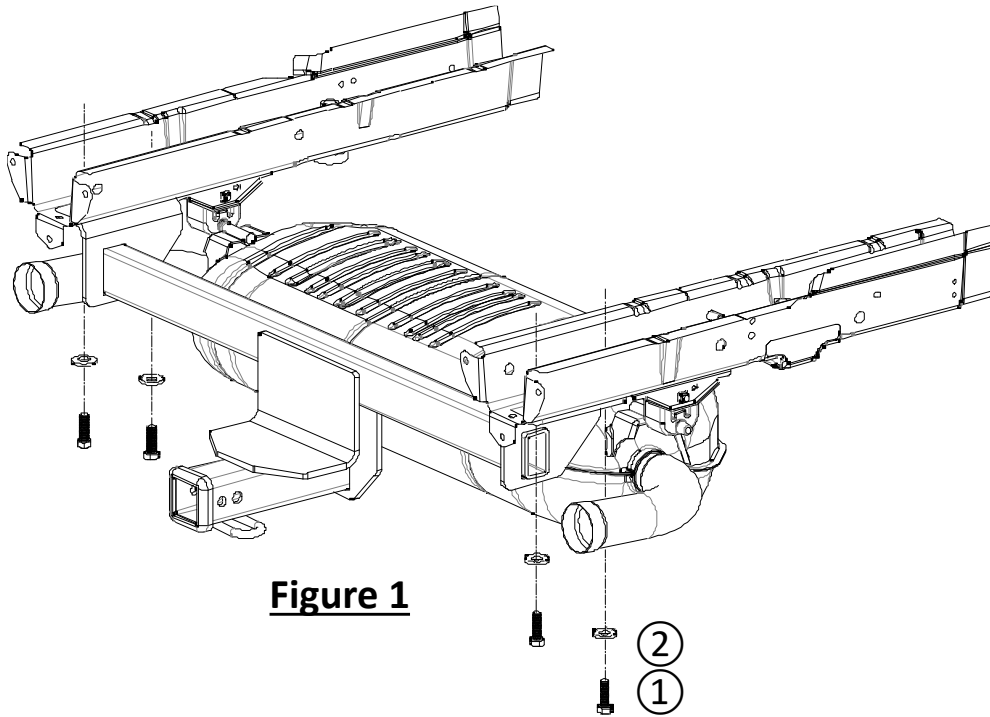
Always wear SAFETY GLASSES when installing hitch

Installation Instructions

PART NUMBERS: 76240, 84240, CQT76240

Fastener Kit: 76240F

①	Qty. (4)	Bolt M12x1.25x40 CL10.9	
②	Qty. (4)	Conical washer 1/2" Part #: 01292008	

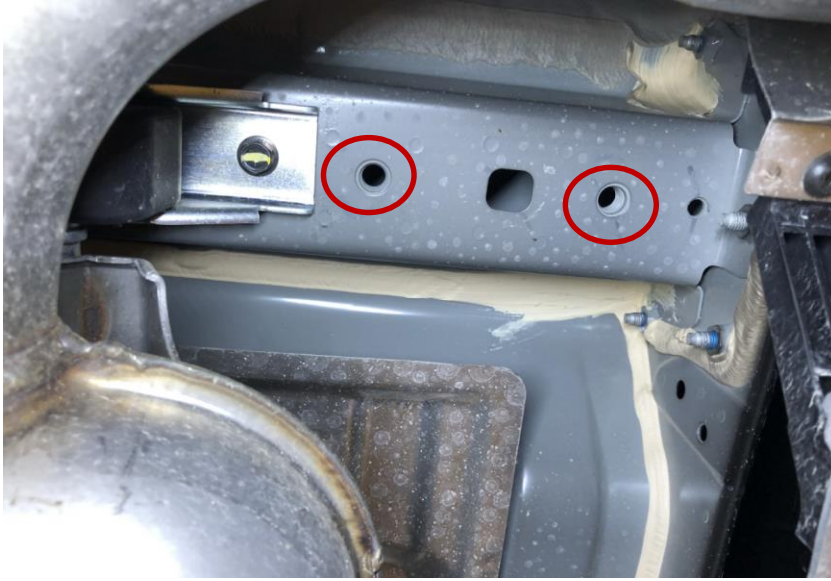


1. **Clean weldnuts:** Use a M12x1.25 tap to clean (2) weldnuts on the frame rails, both sides, see **Figure 2**.
2. **Install hitch:** Raise the hitch into position and slide the brackets above the exhaust pipe. Align bracket holes to the frame rails weldnuts and loosely install M12 bolts ① and conical washers ② to the hitch, see **Figure 1**.
3. **Tighten all M12 fasteners with torque wrench to 76 Ft.Lb. (103 N*M)**

Proper torque is needed to keep the hitch secure to the vehicle when towing.

Note: check hitch frequently, making sure all fasteners and ball are properly tightened. If hitch is removed, plug all holes in trunk pan or other body panels to prevent entry of water and exhaust fumes. A hitch or ball which has been damaged should be removed and replaced. Observe safety precautions when working beneath a vehicle and wear eye protection. Do not cut access or attachment holes with a torch. This product complies with safety specifications and requirements for connecting devices and towing systems of the state of New York, V.E.S.C. Regulation V-5 and SAE J684.


1. Clean weldnuts: Use a M12x1.25 tap to clean (2) weldnuts on the frame rails, both sides, see [Figure 2](#).

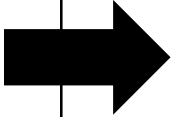


2. Install hitch: Raise the hitch into position and slide the brackets above the exhaust pipe. Align bracket holes to the frame rails weldnuts and loosely install M12 bolts (1) and conical washers (2) to the hitch, see [Figure 1](#).



3. Tighten all M12 fasteners with torque wrench to 76 Ft.Lb. (103 N*M)

 Proper torque is needed to keep the hitch secure to the vehicle when towing.



Rely on premium trailer hitches and towing by Draw-Tite if you're looking for quality and efficiency.