



Installation Instructions

PART NUMBERS: 76217, 84217, CQT76217

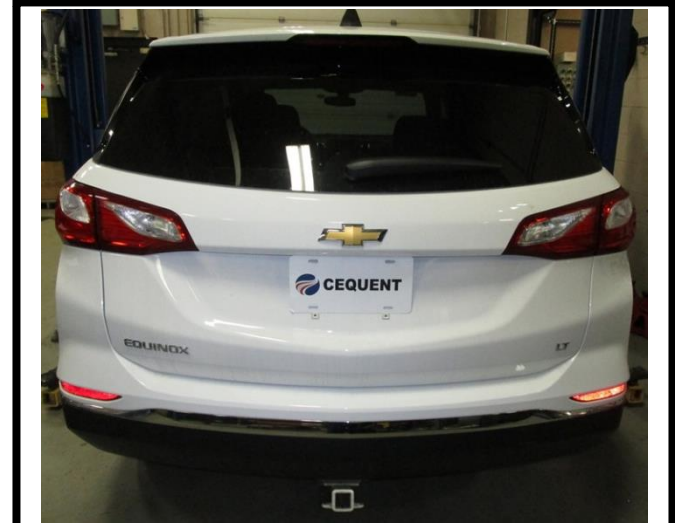
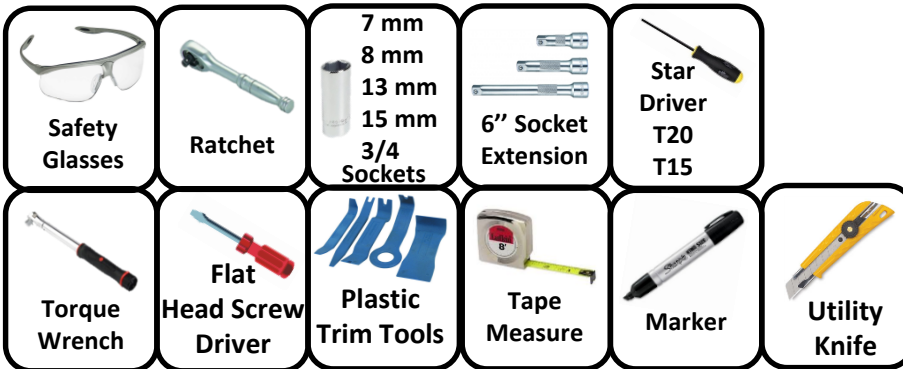
Applications:

| Years | Make | Models |
|---------------|-------|----------------|
| 2018-Current* | Chevy | Equinox Diesel |
| 2018-Current* | GMC | Terrain Diesel |

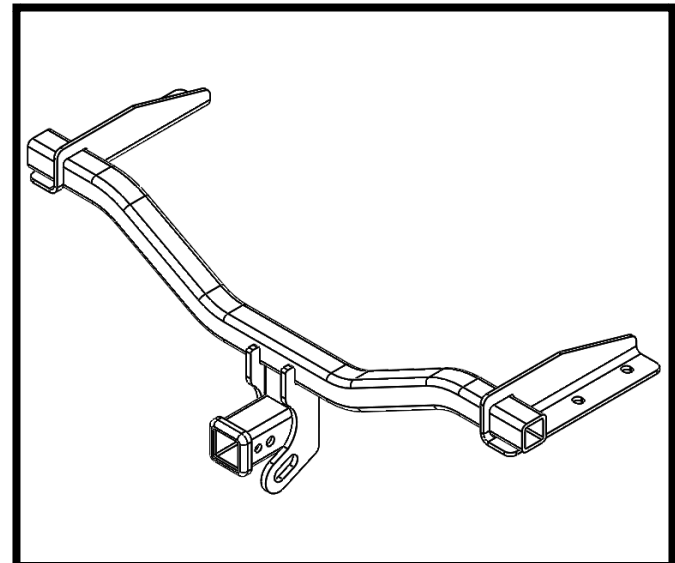
Installation Time: 70 min

The time listed above is the average time for professional installers. If you do not feel comfortable performing this installation on your own or are in need of assistance, please contact a professional installer.

Equipment Required:



Representative Vehicle Photo



Hitch Illustration

DO NOT EXCEED LOWER OF TOWING VEHICLE MANUFACTURER'S RATING OR:

| Hitch Type | Max Gross Trailer Weight | Max Tongue Weight |
|---------------------|--------------------------|-------------------|
| Weight Carrying | 4500 lb. (2043 kg) | 675 lb. (306 kg) |
| Weight Distributing | 4500 lb. (2043 kg) | 675 lb. (306 kg) |

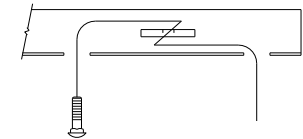
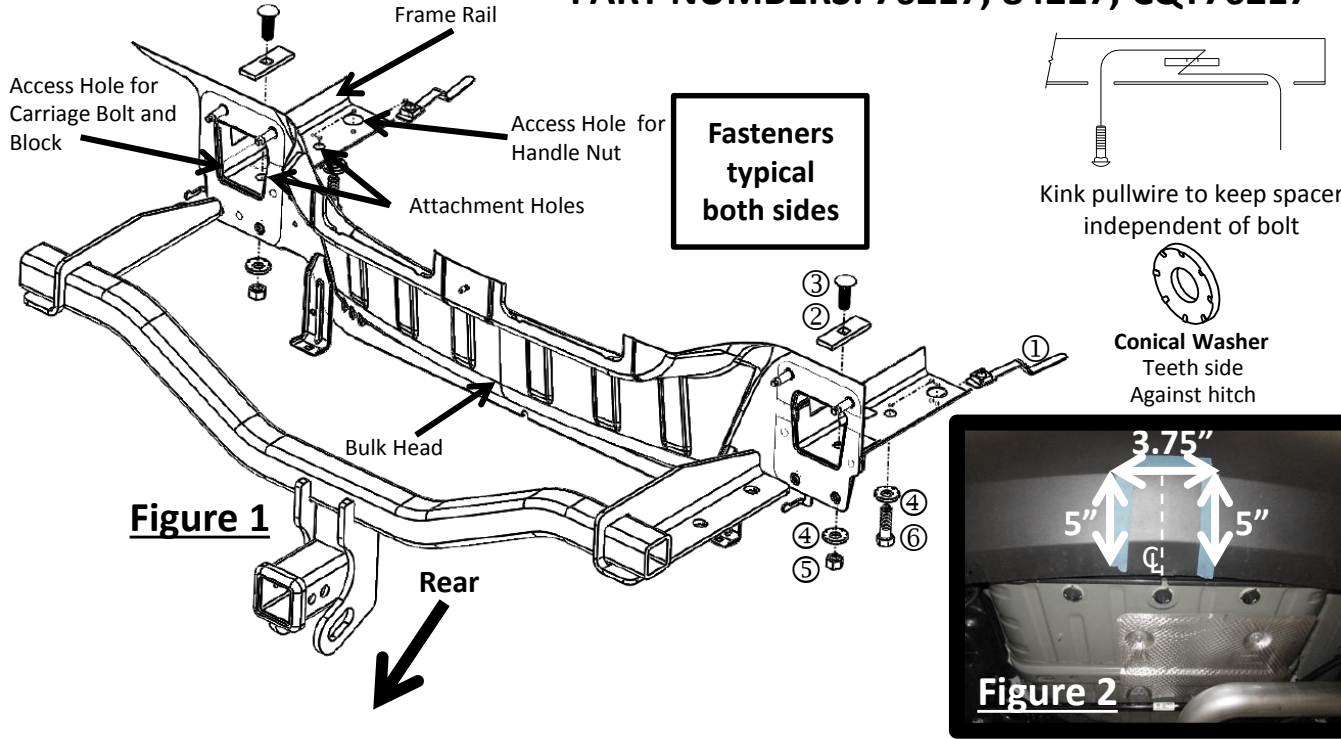


Always wear SAFETY GLASSES when installing hitch

Installation Instructions

PART NUMBERS: 76217, 84217, CQT76217

Fastener Kit: 76217F



Kink pullwire to keep spacer independent of bolt



Conical Washer
Teeth side
Against hitch

| | | | |
|---|----------|--|--|
| ① | Qty. (2) | Handle Nut 1/2"-13 Part# 1332 | |
| ② | Qty. (2) | Block .250" x 1" x 3" Part# 3022 | |
| ③ | Qty. (2) | Carriage Bolt 1/2"-13 x 1.5" Part# 55563 | |
| ④ | Qty. (4) | Conical Washer 1/2" Part# 01292008 | |
| ⑤ | Qty. (2) | Hex Nut 1/2"-13 | |
| ⑥ | Qty. (2) | Bolt 1/2"-13 x 1.75" | |
| ⑦ | Qty. (2) | Fish Wire 1/2"-13 Part# 5482 | |

- Fascia Removal** – a. Using a T-15 star bit remove (4) screws (each side) from the wheel well. Then remove (2) screws at the bottom of rear bumper fascia.
b. Using a 7mm socket remove (1) bolt (each side) under the liner of the wheel well.
c. Using a T-20 star bit remove (1) screw (each side) in the trunk.
d. Pull lightly on the fascia to detach from vehicle. Before removing completely unclip (1) electrical connection from the passenger side. Remove fascia and set aside.
- Remove Bumper**– a. Using a 15mm socket remove (2) nuts (each side) from the top of the bumper flange. (Return to owner)
b. Using a 13mm socket remove (2) bolts (each side). Remove (2) bolts from the urea tank bracket. (Save to reinstall)
c. Remove the exhaust bracket from the metal hanger (Note: The exhaust will hang from the center rubber isolator). Remove the urea tank mounting bracket. (Save to reinstall)
d. Remove the bumper. (Return to Owner)
- Urea Tank Lowering**- a. Using a flat head screw driver remove (4) push pins from the plastic urea tank cover.
b. Remove (3) electrical connectors from the urea tank (Note: Do Not remove the hose from the bottom of the tank). Using a 8mm socket remove (1) bolt from the electrical box and let the wires hang.
c. Using a 13mm socket remove (3) bolts from the urea tank. (Note: Support the tank as need allowing access to the frame rail. Unclip the hose as needed for extra clearance)
- Hitch installation** – Slide the hitch into position aligning with the attachment holes. (See Figure 1). Rear Attachment: Fish wire items ② and ③ through the rear of the frame and loosely attach items ④ and ⑤. Forward Attachment: Bend the handle nut (item ①) as needed, feed into the vehicle frame rail to align with the attachment hole and loosely install items, ③ and ⑥.
- Torque Fasteners** – Torque all 1/2" handle nut fasteners to 50 ft-lb and 1/2" carriage bolts to 75 ft-lb **▲ Proper torque is needed to keep the hitch secure to the vehicle when towing.**
- Trim Fascia** – See Figure 2. At the bottom of the fascia trim a 5"x 3.75" from the center of the fascia.
- Reinstall** – Reversing steps 3 through steps 1 reinstall the urea tank, urea tank bracket, exhaust hanger bracket, and fascia. Note: The bumper does not get reinstalled. (Return to owner)

Note: check hitch frequently, making sure all fasteners and ball are properly tightened. If hitch is removed, plug all holes in trunk pan or other body panels to prevent entry of water and exhaust fumes. A hitch or ball which has been damaged should be removed and replaced. Observe safety precautions when working beneath a vehicle and wear eye protection. Do not cut access or attachment holes with a torch. This product complies with safety specifications and requirements for connecting devices and towing systems of the state of New York, V.E.S.C. Regulation V-5 and SAE J684.

1a. **Fascia Removal** – Using a T-15 star bit remove (4) screws (each side) from the wheel well. Then remove (2) screws at the bottom of rear bumper fascia.



1b. **Fascia Removal** – Using a 7mm socket remove (1) bolt (each side) under the liner of the wheel well.



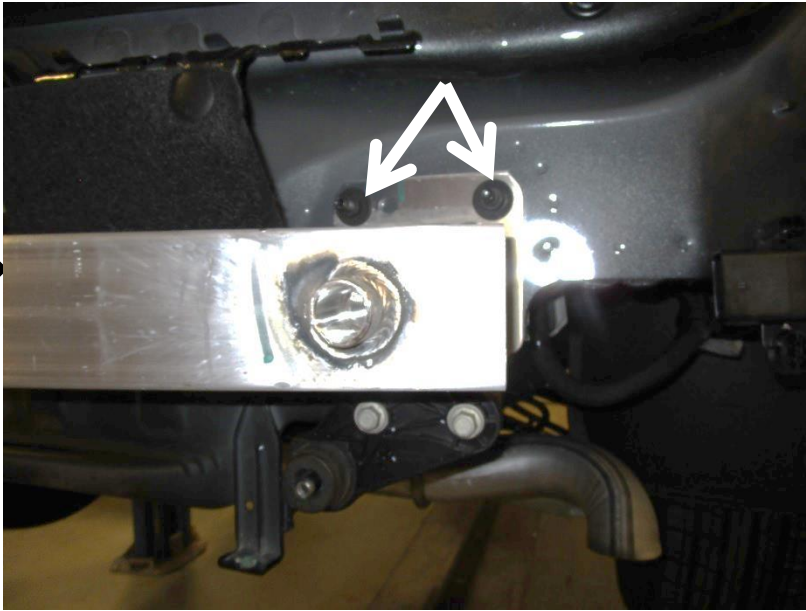
1c. **Fascia Removal** – Using a T-20 star bit remove (1) screw (each) side in the trunk.



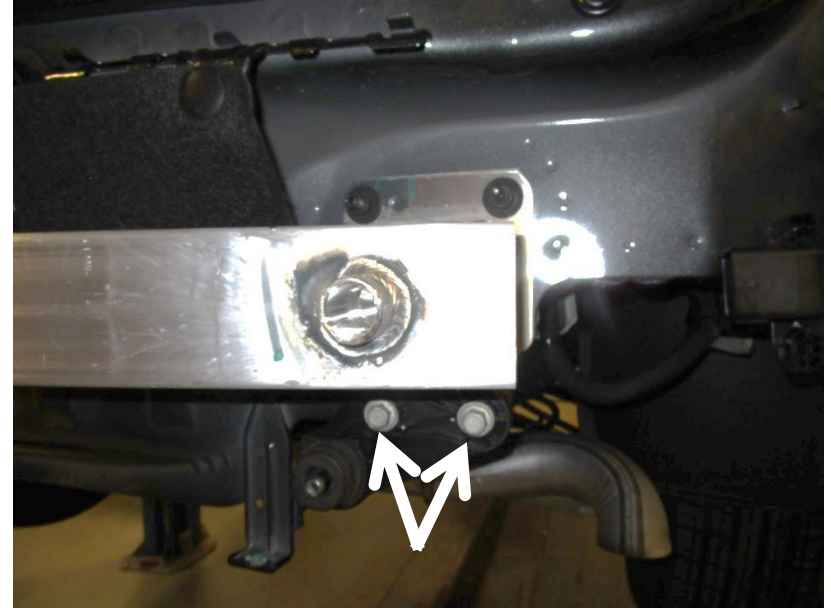
1d. **Fascia Removal** – Pull lightly on the fascia to remove and unclip (1) electrical connection from the passenger side.



2a. **Remove Bumper**– a. Using a 15mm socket remove (2) nuts (each side) from the top of the bumper flange. (Return to owner)



2 b. Using a 13mm socket remove (2) bolts (each side). Remove (2) bolts from the urea tank bracket. (Save to reinstall)



2c. Remove the exhaust bracket from the metal hanger (Note: The exhaust will hang from the center rubber isolator). Remove the urea tank mounting bracket. (Save to reinstall)



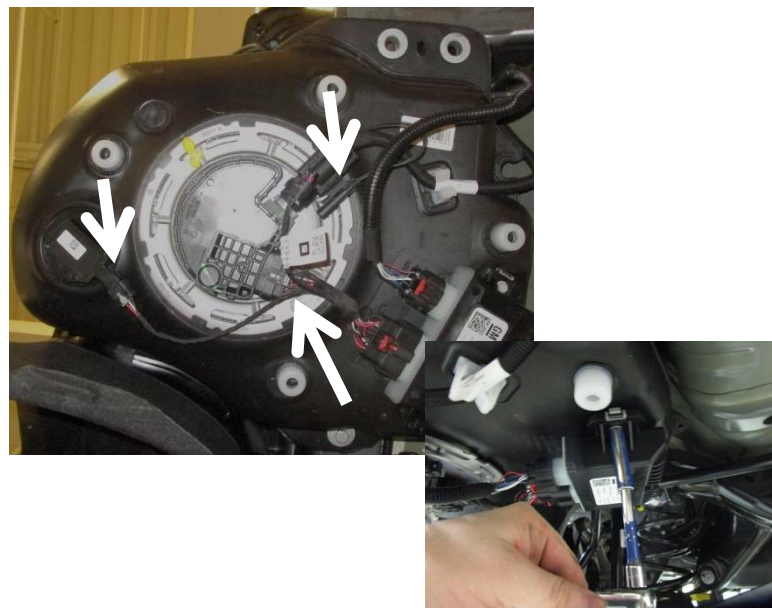
2d. Remove the bumper. (Return to Owner)



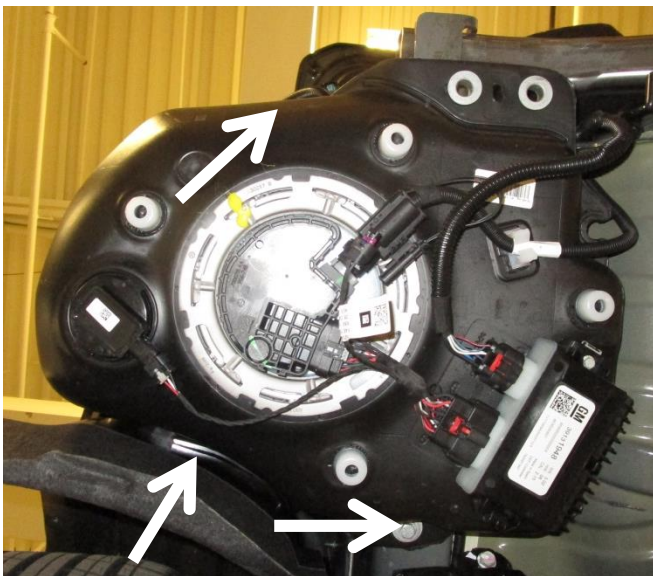
3a. **Urea Tank Lowering-** Using a flat head screw driver remove (4) push pins from the plastic urea tank cover.



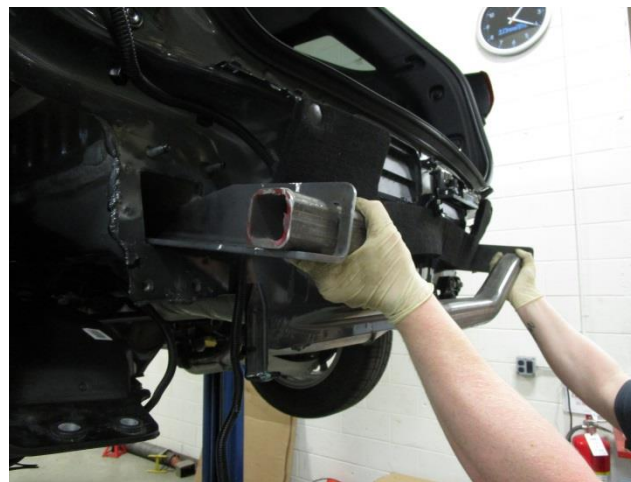
3 b. Remove (3) electrical connectors from the urea tank (Note: Do Not remove the hose from the bottom of the tank). Using a 8mm socket remove (1) bolt from the electrical box and let the wires hang.



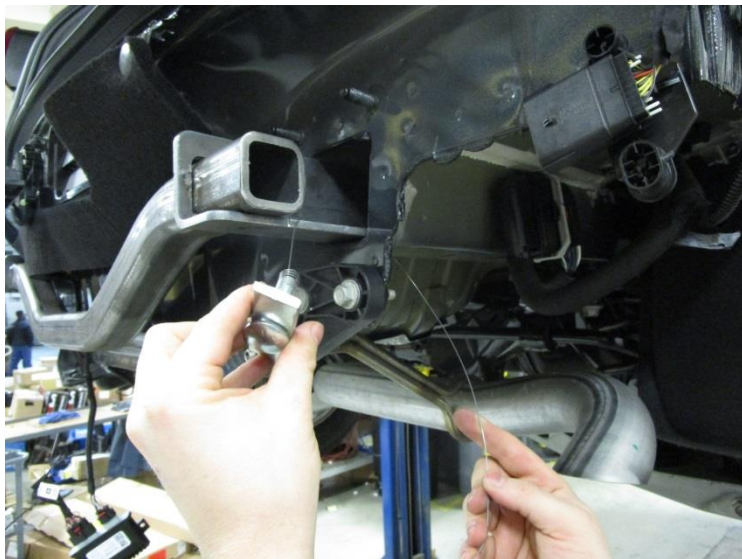
3c. Using a 13mm socket remove (3) bolts from the urea tank. (Note: Support the tank as need allowing access to the frame rail. Unclip the hose as needed for extra clearance)



4a. **Hitch installation** – Slide the hitch into position aligning with the attachment holes. (See Figure 1).



- 4b. Rear Attachment: Fish wire items ② and ③ through the rear of the frame and loosely attach items ④ and ⑤.



- 4c. Forward Attachment: Bend the handle nut (item ①) as needed, feed into the vehicle frame rail to align with the attachment hole and loosely install items, ④ and ⑤.

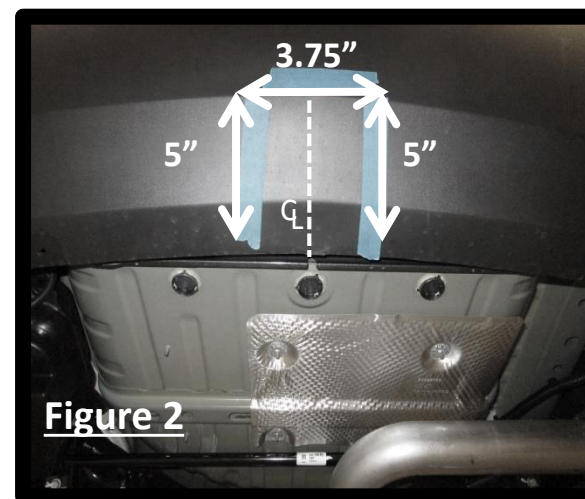


5. **Torque Fasteners** – Torque all 1/2" handle nut fasteners to 50 ft-lb and 1/2" carriage bolts to 75 ft-lb

⚠ Proper torque is needed to keep the hitch secure to the vehicle when towing.



6. **Trim Fascia** – See Figure 2. At the bottom of the fascia trim a 5"x 3.75" from the center of the fascia.



7. **Reinstall** – Reversing steps 3 through steps 1 reinstall the urea tank, urea tank bracket, exhaust hanger bracket, and fascia. Note: The bumper does not get reinstalled. (Return to owner)



3 bolts, 3 electrical connections



4 push pins



Urea tank bracket

Exhaust bracket



Fascia

Check out a selection of trailer hitches and towing offered in our online store.