



Installation Instructions

PART NUMBERS: 76194, 84194, CQT76194

Applications:

Years	Make	Models
2016-Current*	Volvo	XC90
2018-Current*	Volvo	XC60

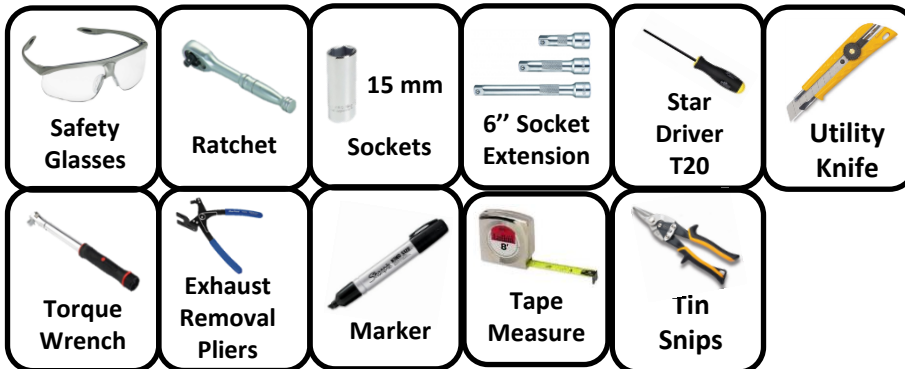
Installation Time: 65 min

The time listed above is the average time for professional installers. If you do not feel comfortable performing this installation on your own or are in need of assistance, please contact a professional installer.



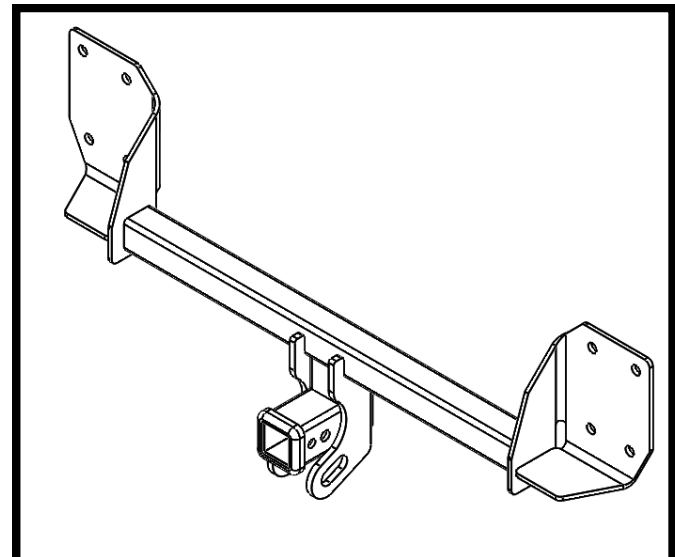
Representative Vehicle Photo

Equipment Required:



DO NOT EXCEED LOWER OF TOWING VEHICLE MANUFACTURER'S RATING OR:

Hitch Type	Max Gross Trailer Weight	Max Tongue Weight
Weight Carrying	6000 lb. (2724 kg)	900 lb. (409 kg)
Weight Distributing	N/A	N/A



Hitch Illustration

Always wear SAFETY GLASSES when installing hitch

Installation Instructions

PART NUMBERS: 76194, 84194, CQT76194

Fastener Kit: 76194F

①	Qty. (2)	Conical washer 7/16" Part# 01292007
②	Qty. (2)	Bolt M10 1.5x45, CL10.9

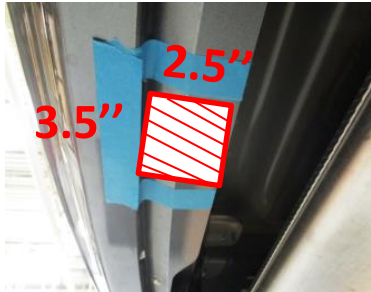


Figure 6

Fasteners typical both sides



Figure 5

Use items 1 and 2 if accessible

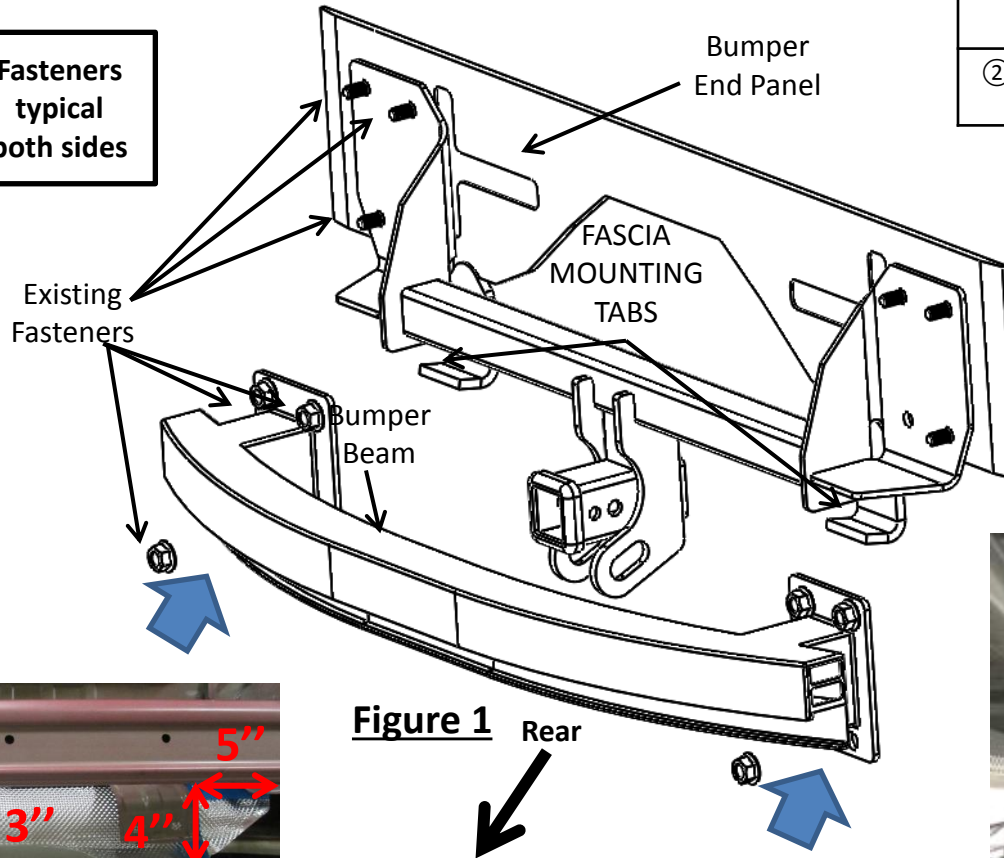


Figure 1 Rear



Figure 2

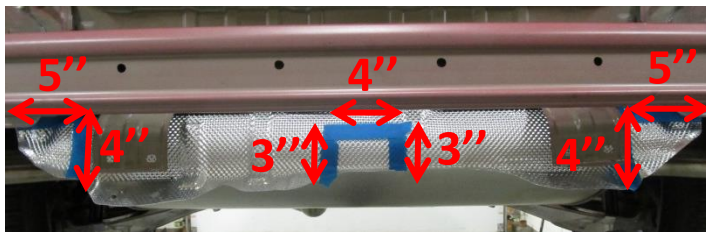


Figure 3

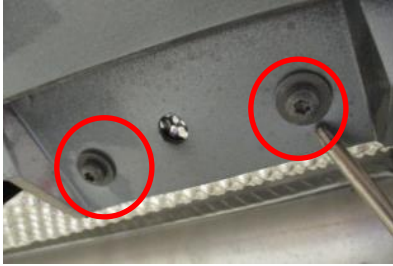


Figure 4

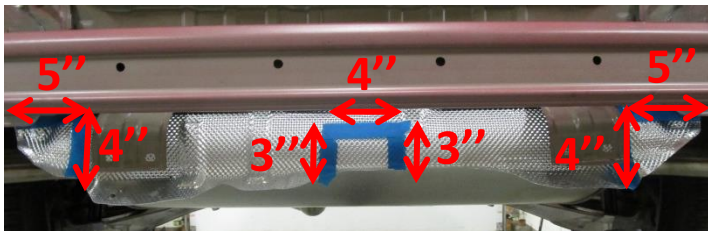
- Fascia and bumper beam removal** – Use T20 star driver to remove (4) screws from bottom fascia and (5 on XC90, 7 on XC60) screws from wheel well each side. Open the trunk (XC60 remove the bump stops) and gently remove the fascia. Unplug (2 on XC90, 1 on XC60) wirings from the fascia and carefully set the fascia aside. Use 15mm socket to remove (3) flange nuts from bumper beam each side and then remove bumper beam. Set the bumper beam and fasteners aside carefully. **NOTE:** Some models might have (4) flange nuts on bumper beam each side.
- Heat shield trimming** – Trim the area on the heat shield as shown in **Figure 3**.
- Bend Fascia Mounting Tabs**- On the XC90 skip this step. On the XC60 gently bend the fascia mounting tabs like **Figure 4** allowing clearance for the hitch.
- Hitch installation** - Raise the hitch into position and align bracket holes to the studs on end panel. Raise bumper beam to sandwich the hitch. Reuse flange nuts from bumper see **Figure 1**. If a fourth hole in the bumper is open use items ① and ② see **Figure 5**. XC60 before the hitch and bumper have been placed into position gently bend the fascia mounting tabs as needed to reattach the heat shield and fascia.
- Tighten all M10 fasteners with torque wrench to 53 Lb.-Ft. (72 N*M).** **▲ Proper torque is needed to keep the hitch secure to the vehicle when towing.**
- Fascia trimming and reinstallation** – Mark the center line on the fascia and trim the area on fascia as shown in **Figure 6**. Reinstall all fasteners, wirings, and fascia removed in step 1. After the fascia have been reinstalled gently bend the fascia mounting tabs as needed to align with the fascia.

Note: check hitch frequently, making sure all fasteners and ball are properly tightened. If hitch is removed, plug all holes in trunk pan or other body panels to prevent entry of water and exhaust fumes. A hitch or ball which has been damaged should be removed and replaced. Observe safety precautions when working beneath a vehicle and wear eye protection. Do not cut access or attachment holes with a torch. This product complies with safety specifications and requirements for connecting devices and towing systems of the state of New York, V.E.S.C. Regulation V-5 and SAE J684.

1. Fascia and bumper beam removal – Use T20 star driver to remove (4) screws from bottom fascia and (5 on XC90, 7 on XC60) screws from wheel well each side. Open the trunk (XC60 remove the bump stops) and gently remove the fascia. Unplug (2 on XC90, 1 on XC60) wirings from the fascia and carefully set the fascia aside. Use 15mm socket to remove (3) flange nuts from bumper beam each side and then remove bumper beam. Set the bumper beam and fasteners aside carefully. **NOTE:** Some models might have (4) flange nuts on bumper beam each side.



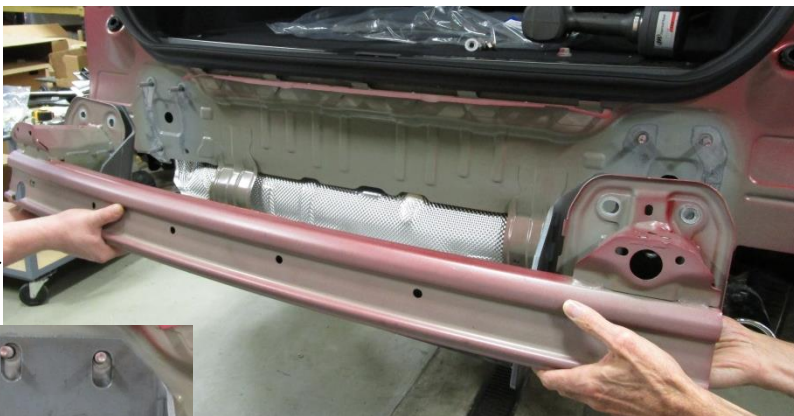
2. Heat shield trimming – Trim the area on the heat shield as shown in [Figure 3](#).



3. Bend Fascia Mounting Tabs– On the XC90 skip this step. On the XC60 gently bend the fascia mounting tabs like [Figure 4](#) allowing clearance for the hitch.

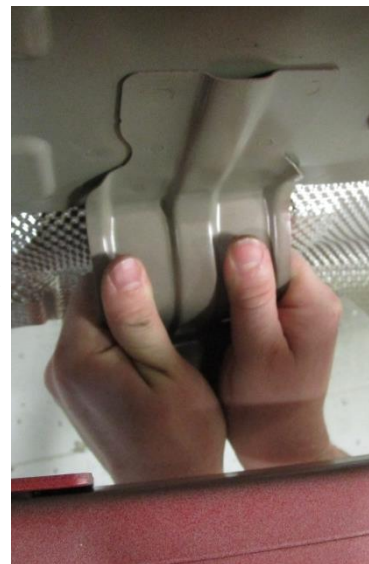


4. **(A) Hitch installation** - Raise the hitch into position and align bracket holes to the studs on end panel. Raise bumper beam to sandwich the hitch. Reuse flange nuts from bumper see **Figure 1**. If a fourth hole in the bumper is open use items ① and ② see **Figure 5**.



Use items 1 and 2 if accessible

4. **(B)**After the hitch and bumper has been placed into position gently bend the fascia mounting tabs as needed to reattach the heat shield and fascia.



5. **Tighten all M10 fasteners with torque wrench to 53 Lb.-Ft. (72 N*M).**

⚠ Proper torque is needed to keep the hitch secure to the vehicle when towing.



6. **Fascia trimming and reinstallation** - mark the center line on the fascia and trim the area on fascia as shown in **Figure 6**. Reinstall all fasteners, wirings, exhaust hanger, and fascia removed in step 1,2.

