



Installation Instructions

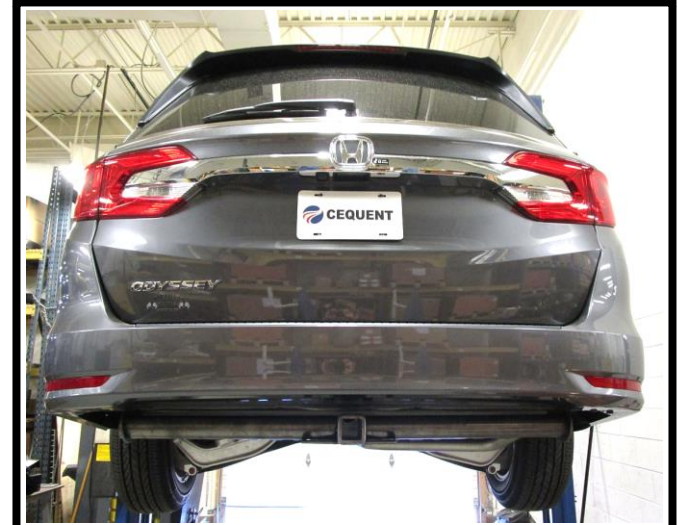
PART NUMBERS: 76171, 84171, CQT76171

Applications:

Years	Make	Models
2018-Current*	Honda	Odyssey

Installation Time: **25 min**

The time listed above is the average time for professional installers. If you do not feel comfortable performing this installation on your own or are in need of assistance, please contact a professional installer.



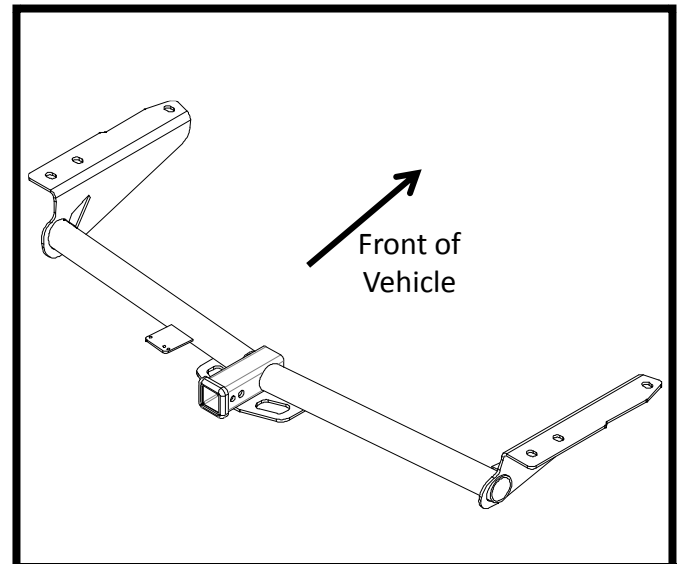
Representative Vehicle Photo

Equipment Required:

Safety Glasses	Ratchet	Sockets	6" Socket Extension	Torque Wrench
Panel Removal Tool	Phillips Screwdriver	Utility Knife	Tape	Exhaust Removal Pliers

DO NOT EXCEED LOWER OF TOWING VEHICLE MANUFACTURER'S RATING OR:

Hitch Type	Max Gross Trailer Weight	Max Tongue Weight
Weight Carrying	4500 lb. (2043 kg)	675 lb. (306 kg)
Weight Distributing	5000 lb. (2270 kg)	675 lb. (306 kg)



Hitch Illustration





Always wear SAFETY GLASSES
when installing hitch

Installation Instructions

PART NUMBERS: 76171, 84171, CQT76171

Fastener Kit: 76171F

①	Qty. (6)	Conical washer 1/2" Part #: 01292008	
②	Qty. (6)	Bolt M12 1.25 x 35, CL8.8	

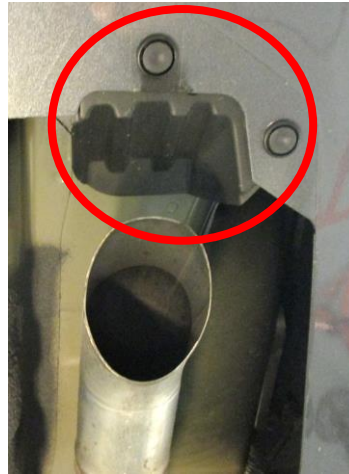
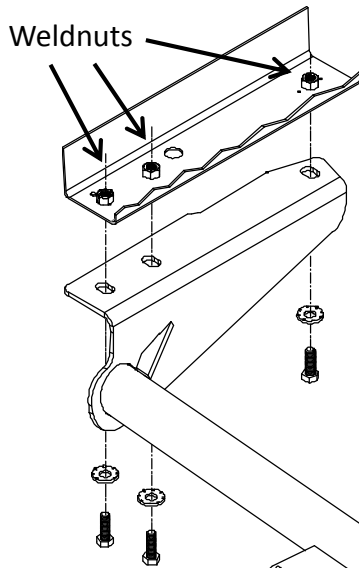


Figure 2

Frame rails

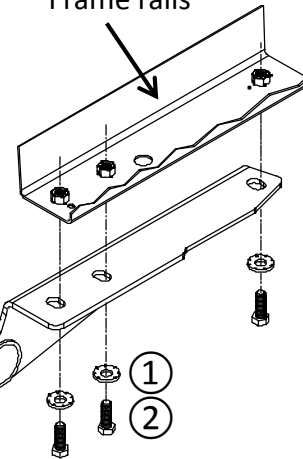


Figure 1



Rear



Figure 3

Conical washer
teeth side
against hitch

Fasteners
typical
both sides

- 1. Remove mud flap and bottom appearance panels** – remove mud flap on driver side if present. Use phillips screwdriver, panel removal tool, and 10 mm socket to remove (4) rivets, and (2) screws from bottom appearance panel on driver side. Use panel removal tool to remove (2) rivets from small plastic panel above exhaust tip on passenger side, see **Figure 2**. Keep all fasteners and panels for reinstallation.
- 2. Lower exhaust pipe** - use exhaust removal pliers to lower the exhaust pipe on passenger side temporarily. Use a support or bungee cord to keep muffler from getting damaged.
- 3. Install hitch** – raise the hitch into position and carefully slide it over passenger side exhaust pipe first. Loosely install M12 bolts ② and conical washers ① to the hitch, see **Figure 1**.
- 4. Tighten all M12 fasteners with torque wrench to 76 Lb.-Ft. (103 N*M).**
- 5. Trim bottom appearance panel** - Trim the bottom appearance panel as shown in **Figure 3**.
- 6. Reinstall all fasteners, exhaust, appearance bottom panels, and mud flap removed in Step 1, 2.**

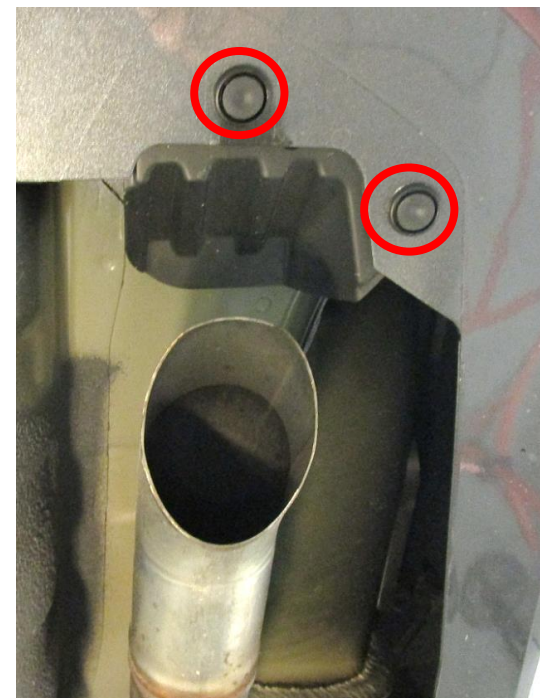
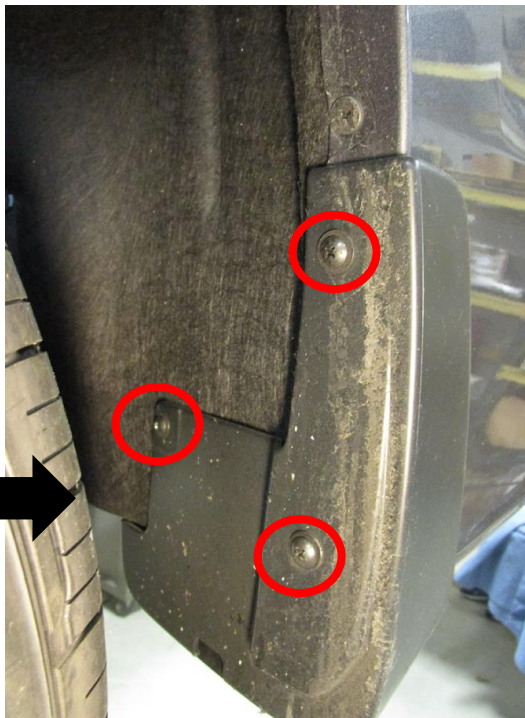


Proper torque is needed to keep the hitch
secure to the vehicle when towing.

Note: check hitch frequently, making sure all fasteners and ball are properly tightened. If hitch is removed, plug all holes in trunk pan or other body panels to prevent entry of water and exhaust fumes. A hitch or ball which has been damaged should be removed and replaced. Observe safety precautions when working beneath a vehicle and wear eye protection. Do not cut access or attachment holes with a torch. This product complies with safety specifications and requirements for connecting devices and towing systems of the state of New York, V.E.S.C. Regulation V-5 and SAE J684.

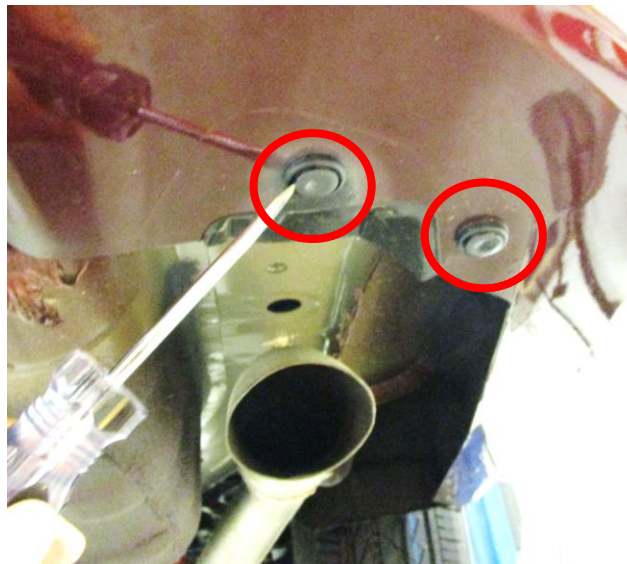
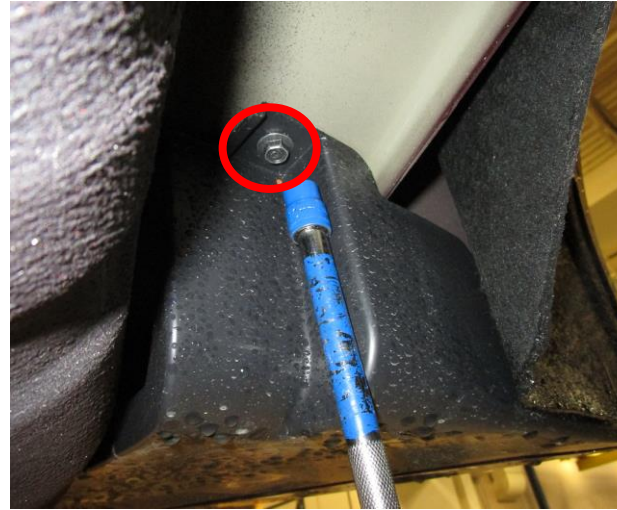
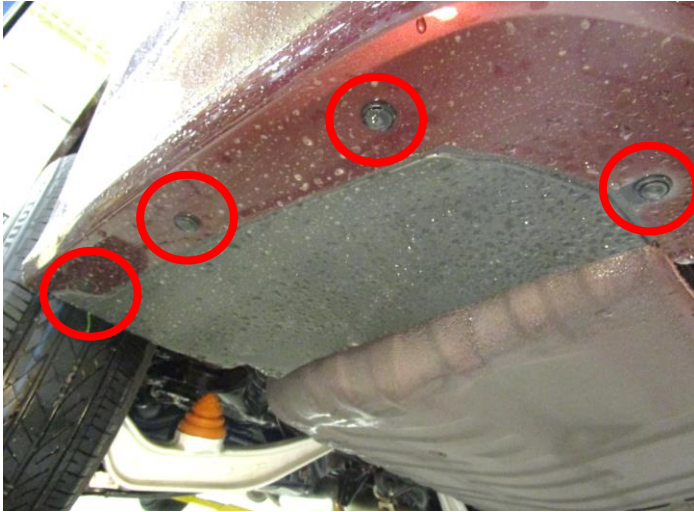
1. Remove mud flap and bottom appearance panels – remove mud flap on driver side if present. Use phillips screwdriver, panel removal tool, and 10 mm socket to remove (4) rivets, and (2) screws from bottom appearance panel on driver side. Use panel removal tool to remove (2) rivets from small plastic panel above exhaust tip on passenger side, see [Figure 2](#). Keep all fasteners and panels for reinstallation.

Model with mud flap



1. Remove mud flap and bottom appearance panels – remove mud flap on driver side if present. Use phillips screwdriver, panel removal tool, and 10 mm socket to remove (4) rivets, and (2) screws from bottom appearance panel on driver side. Use panel removal tool to remove (2) rivets from small plastic panel above exhaust tip on passenger side, see [Figure 2](#). Keep all fasteners and panels for reinstallation.

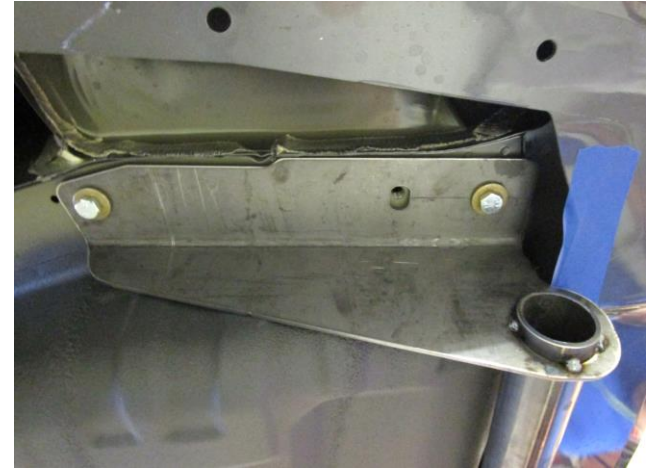
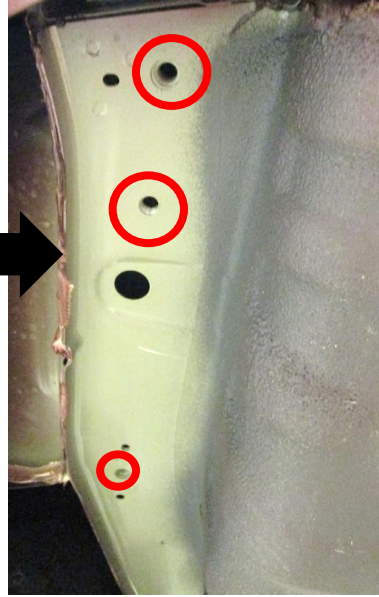
Model without mud flap



2. Lower exhaust pipe- use exhaust removal pliers to lower the exhaust pipe on passenger side temporarily. Use a support or bungee cord to keep muffler from getting damaged.



3. Install hitch – raise the hitch into position and carefully slide it over passenger side exhaust pipe first. Loosely install M12 bolts (2) and conical washers (1) to the hitch.



4. Tighten all M12 fasteners with torque wrench to 76 Lb.-Ft. (103 N*M).

⚠ Proper torque is needed to keep the hitch secure to the vehicle when towing.



5. Trim bottom appearance panel - Trim the bottom appearance panel as shown in **Figure 3**.

6. Reinstall all fasteners, exhaust, appearance bottom panels, and mud flap removed in Step 1, 2.



Check out a selection of trailer hitches and towing offered in our online store.