



# Installation Instructions

PART NUMBERS: 76170, 84170, CQT76170

## Applications:

Years	Make	Models
2018-Current*	Honda	Odyssey

## Installation Time: **80 min**

The time listed above is the average time for professional installers. If you do not feel comfortable performing this installation on your own or are in need of assistance, please contact a professional installer.



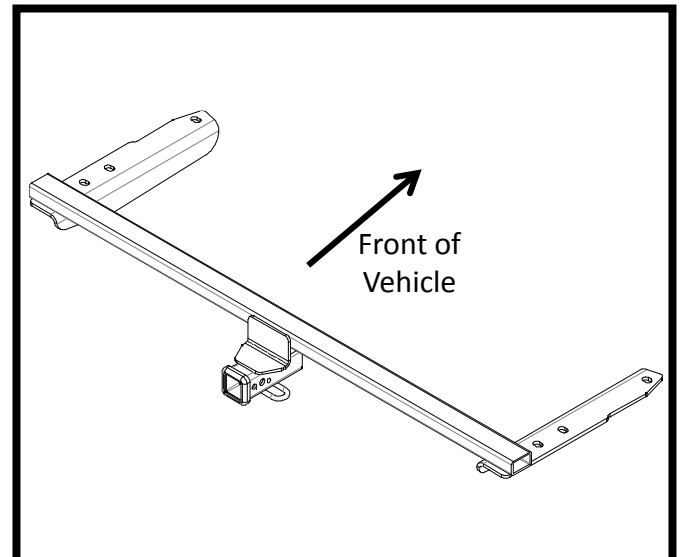
**Representative Vehicle Photo**

## Equipment Required:

Safety Glasses	Ratchet	10 mm 19 mm Sockets	6" Socket Extension	Torque Wrench	3/16" or 5 mm Hex Bits
Panel Removal Tool	Plastic Trim Tools	Utility Knife	Tape	Phillips Screwdriver	Exhaust Removal Pliers

## DO NOT EXCEED LOWER OF TOWING VEHICLE MANUFACTURER'S RATING OR:

Hitch Type	Max Gross Trailer Weight	Max Tongue Weight
Weight Carrying	3500 lb. (1589 kg)	525 lb. (238 kg)
Weight Distributing	N/A	N/A





**Hitch Illustration**

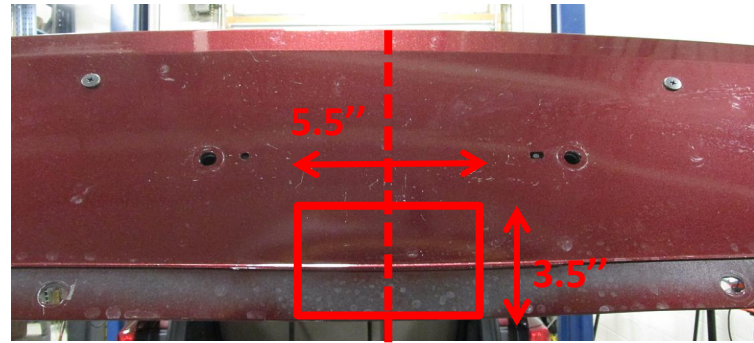
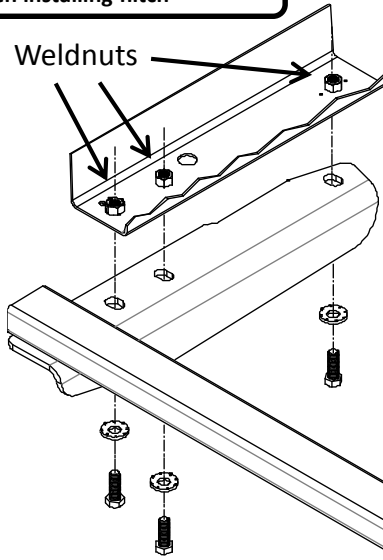
**Always wear SAFETY GLASSES when installing hitch**

# Installation Instructions

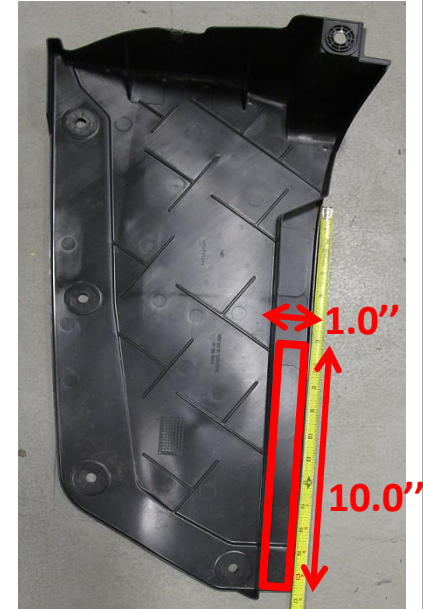
**PART NUMBERS: 76170, 84170, CQT76170**

**Fastener Kit: 76170F**

①	Qty. (6)	Conical washer 1/2" Part #: 01292008	
②	Qty. (6)	Bolt M12 1.25 x 35, CL8.8	



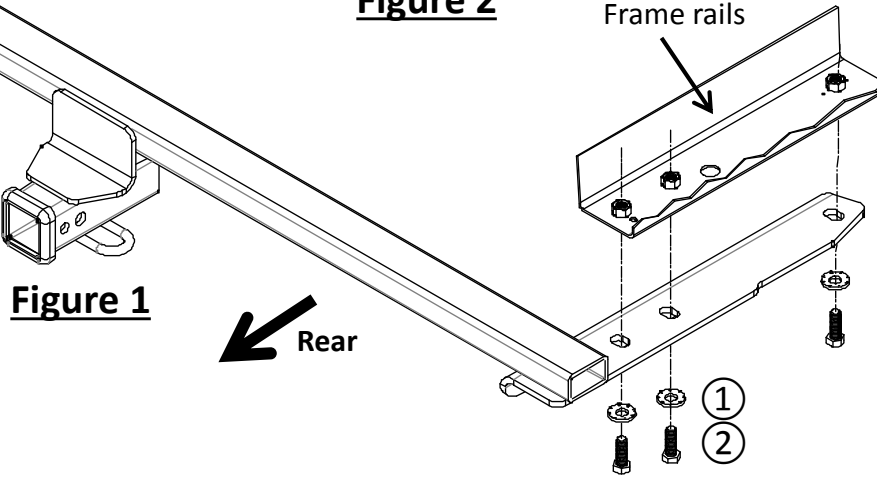
**Figure 2**



**Figure 3**

  
**Conical washer  
teeth side  
against hitch**

**Fasteners  
typical  
both sides**



**Figure 1**

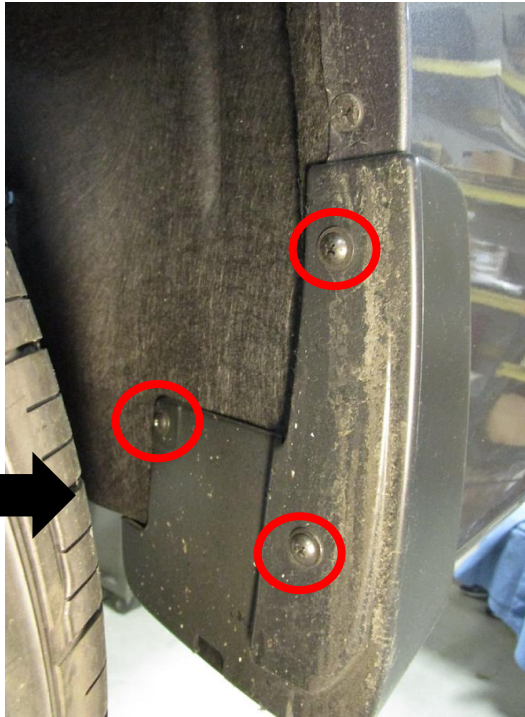
- Remove bottom appearance panel and mud flaps** - use phillips screwdriver, panel removal tool, and 10 mm socket to remove (4) rivets, and (2) screws from bottom appearance panel on driver side. Remove mud flap each side if present. Keep the bottom panel and mud flaps for reinstallation.
- Remove bumper fascia** - (a) use panel removal tool to remove (2) plastic rivets from bottom center fascia. For model with hands-free liftgate, there will be (6) plastic rivets. (b) use phillips screwdriver to remove (3) screws from wheel well liner each side. (c) open the trunk and use 3/16" or 5 mm hex bits to remove (2) flat head screws each side. (d) using plastic trim tools, gently remove the plastic fascia starting at the outer edges near the wheel wells. (e) disconnect the wiring from fascia each side if present.
- Lower exhaust pipe** - use exhaust removal pliers to lower the exhaust pipe temporarily. Use a support or bungee cord to keep muffler from getting damaged.
- Install hitch** - raise the hitch into position and carefully slide it over passenger side exhaust pipe first. Loosely install M12 bolts ② and conical washers ① to the hitch, see **Figure 1**.
- Tighten all M12 fasteners with torque wrench to 76 Lb.-Ft. (103 N\*M).**
- Trim bumper fascia and bottom appearance panel** - locate the center of bottom bumper fascia and trim 3.5" tall by 5.5" wide area, see **Figure 2**. Trim the bottom appearance panel as shown in **Figure 3**.
- Reinstall all fasteners, wiring, fascia, exhaust, appearance bottom panel, and mud flaps removed in Step 1, 2, 3.

**Proper torque is needed to keep the hitch secure to the vehicle when towing.**

Note: check hitch frequently, making sure all fasteners and ball are properly tightened. If hitch is removed, plug all holes in trunk pan or other body panels to prevent entry of water and exhaust fumes. A hitch or ball which has been damaged should be removed and replaced. Observe safety precautions when working beneath a vehicle and wear eye protection. Do not cut access or attachment holes with a torch. This product complies with safety specifications and requirements for connecting devices and towing systems of the state of New York, V.E.S.C. Regulation V-5 and SAE J684.

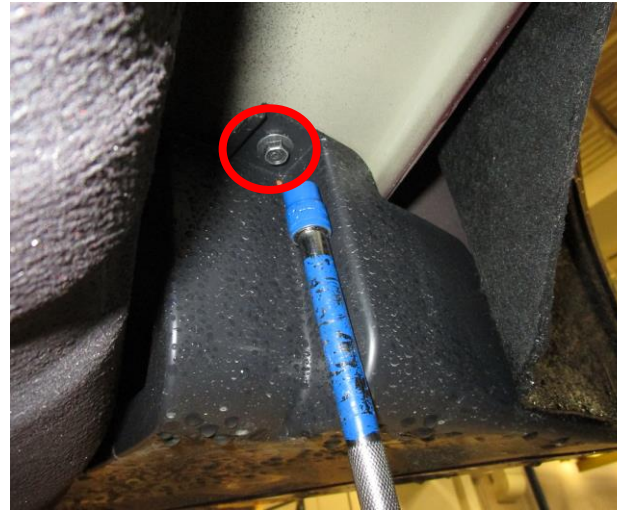
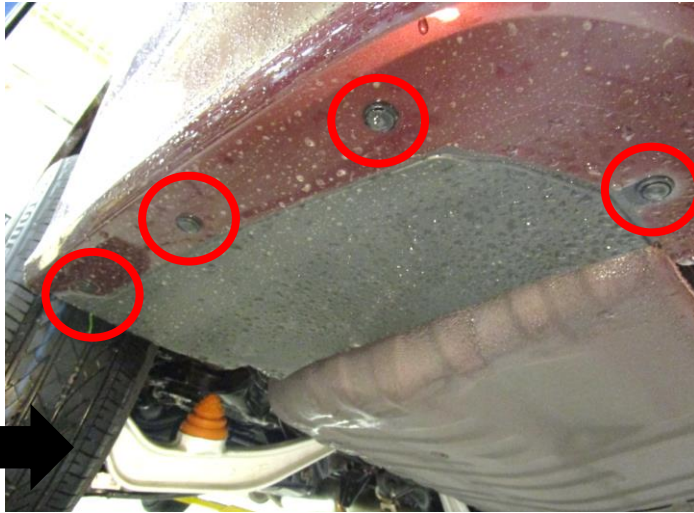
1. Remove bottom appearance panel and mud flaps - use phillips screwdriver, panel removal tool, and 10 mm socket to remove (4) rivets, and (2) screws from bottom appearance panel on driver side. Remove mud flap each side if present. Keep the bottom panel and mud flaps for reinstallation.

## Model with mud flap



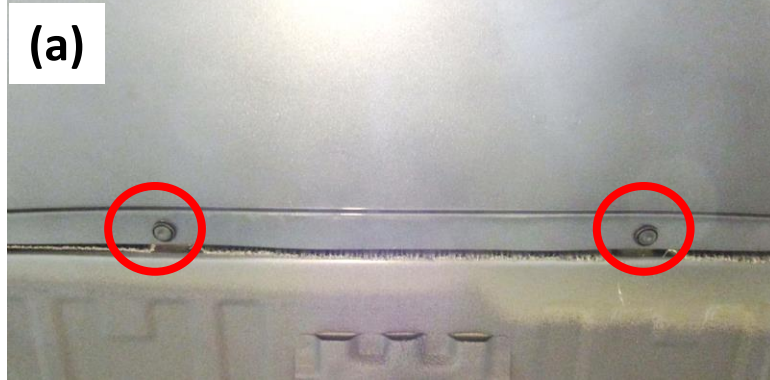
1. Remove bottom appearance panel and mud flaps - use phillips screwdriver, panel removal tool, and 10 mm socket to remove (4) rivets, and (2) screws from bottom appearance panel on driver side. Remove mud flap each side if present. Keep the bottom panel and mud flaps for reinstallation.

## Model without mud flap

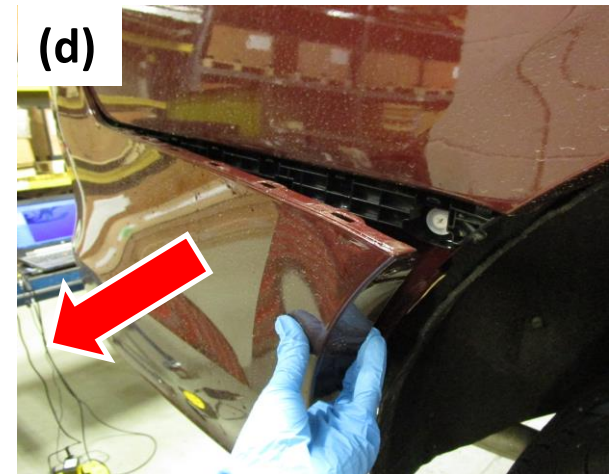
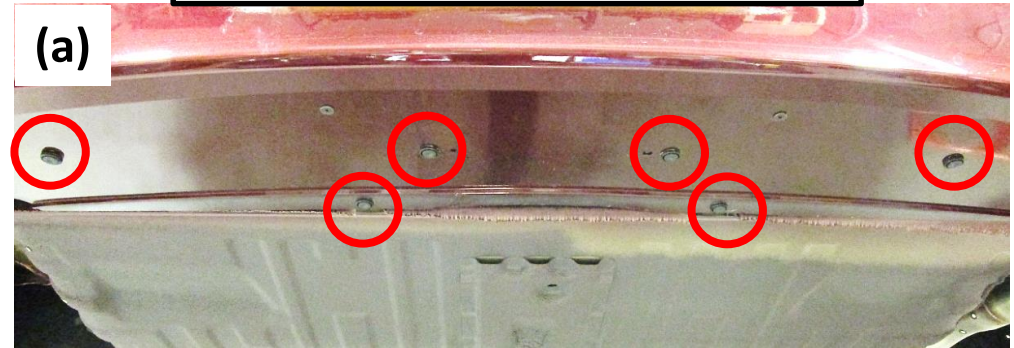


2. Remove bumper fascia - (a) use panel removal tool to remove (2) plastic rivets from bottom center fascia. For model with hands-free liftgate, there will be (6) plastic rivets. (b) use phillips screwdriver to remove (3) screws from wheel well liner each side. (c) open the trunk and use 3/16" or 5 mm hex bits to remove (2) flat head screws each side. (d) using plastic trim tools, gently remove the plastic fascia starting at the outer edges near the wheel wells. (e) disconnect the wiring from fascia each side if present.

### Model without hands-free liftgate



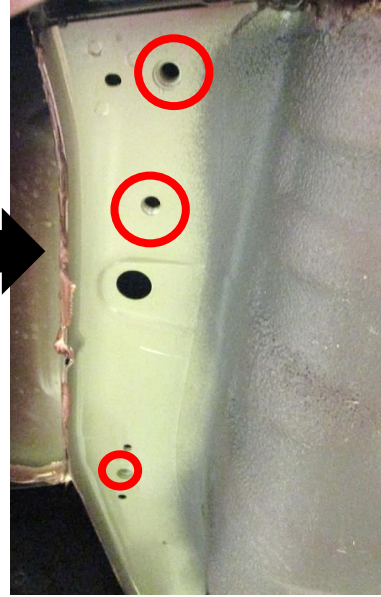
### Model with hands-free liftgate



**3. Lower exhaust pipe-** use exhaust removal pliers to lower the exhaust pipe temporarily. Use a support or bungee cord to keep muffler from getting damaged.



**4. Install hitch** – raise the hitch into position and carefully slide it over passenger side exhaust pipe first. Loosely install M12 bolts (2) and conical washers (1) to the hitch.

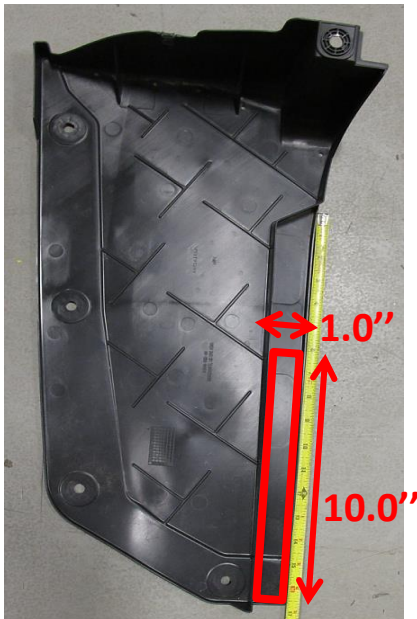
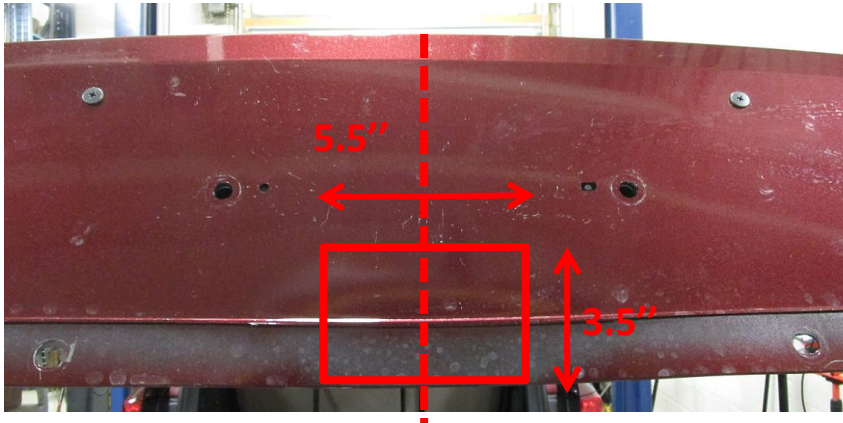


**5. Tighten all M12 fasteners with torque wrench to 76 Lb.-Ft. (103 N\*M).**

**⚠ Proper torque is needed to keep the hitch secure to the vehicle when towing.**



6. Trim bumper fascia and bottom appearance panel - locate the center of bottom bumper fascia and trim 3.5" tall by 5.5" wide area, see **Figure 2**. Trim the bottom appearance panel as shown in **Figure 3**.
7. Reinstall all fasteners, fascia, exhaust, appearance bottom panel, and mud flaps removed in Step 1, 2, 3.



Check out a selection of trailer hitches and towing offered in our online store.