



Installation Instructions

PART NUMBERS: 76136, 84136, CQT76136

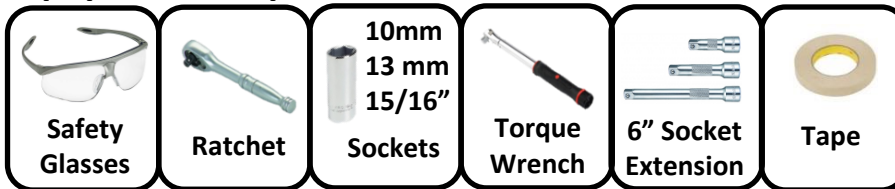
Applications:

Years	Make	Models
2015-Current*	Ford	F150

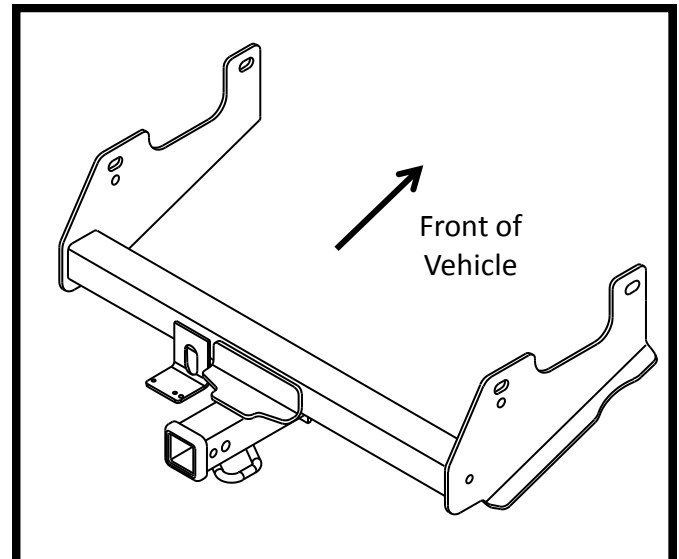
Installation Time: 30 min.

The time listed above is the average time for professional installers. If you do not feel comfortable performing this installation on your own or are in need of assistance, please contact a professional installer.

Equipment Required:



Representative Vehicle Photo



Hitch Illustration

DO NOT EXCEED LOWER OF TOWING VEHICLE MANUFACTURER'S RATING OR:

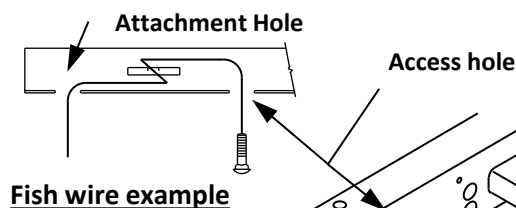
Hitch Type	Max Gross Trailer Weight	Max Tongue Weight
Weight Carrying	6000 lb. (2724 kg)	900 lb. (408 kg)
Weight Distributing	10,000 lb. (4540 kg)	1000 lb. (454 kg)

PRELIMINARY

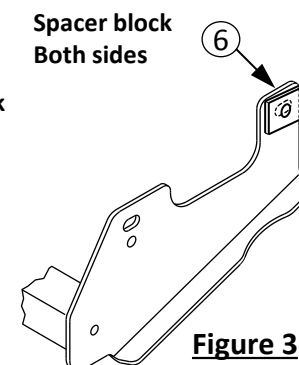
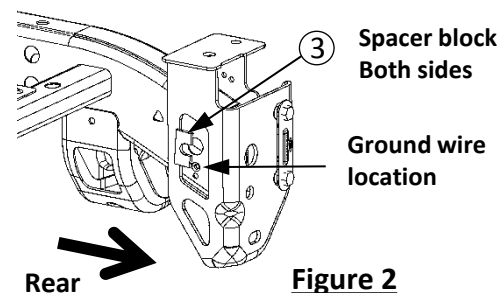
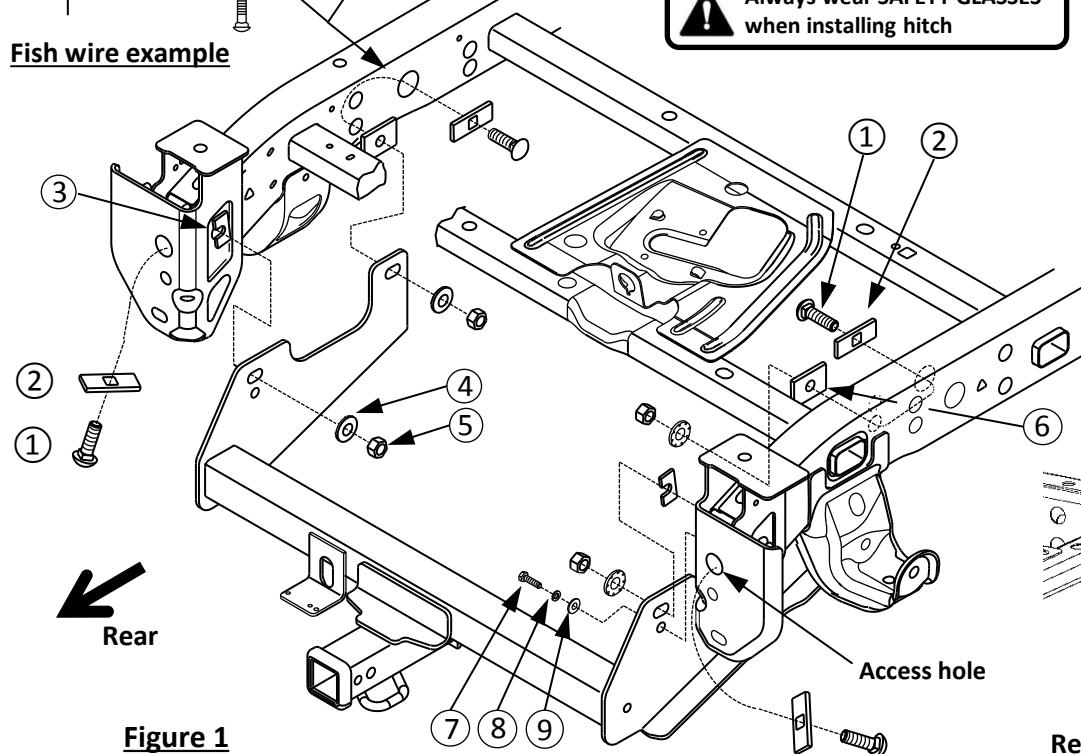
Installation Instructions

PART NUMBERS: 76136, 84136, CQT76136

Fastener Kit: 76136F



Always wear SAFETY GLASSES when installing hitch



①	Qty. (4)	Carriage Bolt 5/8-11 x 2.00 Gr5	
②	Qty. (4)	Spacer block .250 x 1.12 x 3.00	
③	Qty. (2)	Spacer block (U-Shaped) .188 x 1.00 x 2.00	
④	Qty. (4)	Conical washer 5/8	
⑤	Qty. (4)	Hex Nut 5/8-11 Gr2	
⑥	Qty. (2)	Spacer block .250 x 1.75 x 2.50	
⑦	Qty. (1)	Bolt M8 X 1.25 X 30 CL8.8	
⑧	Qty. (1)	Lock Washer 5/16	
⑨	Qty. (1)	Flat Washer 5/16	
⑩	Qty. (4)	fish wire 5/8	

- Remove ground wire** – Using a 10mm socket, remove ground wire from the inside of passenger side frame rail. Return fastener to vehicle owner.
- Lower spare tire for hitch installation.**
- Spacer block installation** - Using masking tape, secure the U-Shaped spacer block to the inside of frame rail in the recessed area, centered around the hole in frame, both sides. **NOTE:** Do not cover ground wire hole below hitch mounting hole, **see figure 2**. Using masking tape, secure the .250 x 1.75 x 2.50 spacer block (item 6) to the forward mounting hole of hitch bracket outer surface, centering the hole in block with slot in bracket, both sides, **see figure 3**.
- Install fasteners** – Feed the coiled end of fish wire through the attachment hole and out of the access hole in frame, **see fish wire example**. Attach the spacer block and carriage bolt (items 1 & 2) to the fish wire and pull fasteners inside the frame, four (4) places. **NOTE:** Keep fish wires attached to hardware and leave hardware inside the frame temporarily.
- Install hitch** – Raise the hitch into position, feeding the end of fish wires through the holes in hitch, then pull the fasteners into position. Carefully remove the fish wires and loosely install the conical washers and hex nuts onto carriage bolts. Be careful to keep the carriage bolts from falling inside the frame.
NOTE: On the driver's side, hold the wiring harness away from hitch during installation.
- Ground wire** – Using a 13mm socket, reattach the ground wire using the M8 bolt, lock washer, and flat washer provided, **see figure 1**.
Tighten all 5/8-11 Gr5 fasteners with torque wrench to 150 Lb.-Ft. (203 N*m)
Tighten all M8 CL8.8 fasteners with torque wrench to 20 Lb.-Ft. (27 N*m)
- Raise the spare tire into the original stowed position.

Proper torque is needed to keep the hitch secure to the vehicle when towing.

Note: check hitch frequently, making sure all fasteners and ball are properly tightened. If hitch is removed, plug all holes in trunk pan or other body panels to prevent entry of water and exhaust fumes. A hitch or ball which has been damaged should be removed and replaced. Observe safety precautions when working beneath a vehicle and wear eye protection. Do not cut access or attachment holes with a torch.

This product complies with safety specifications and requirements for connecting devices and towing systems of the state of New York, V.E.S.C. Regulation V-5 and SAE J684.

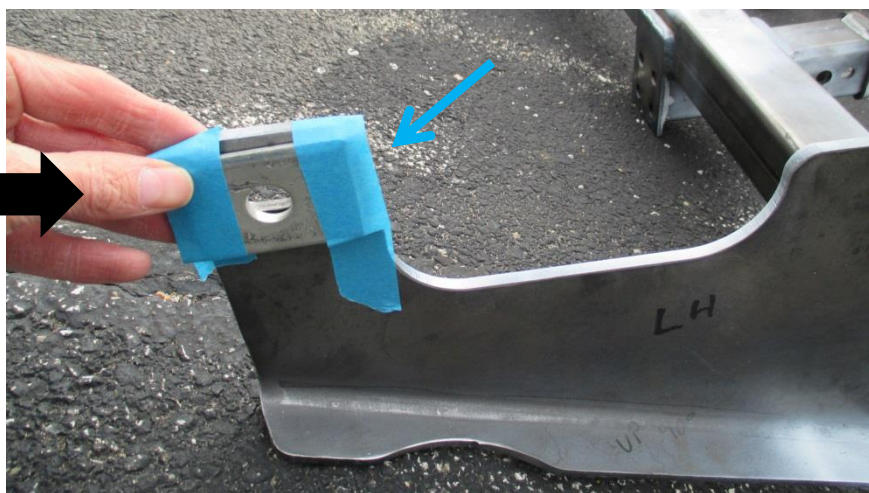
1. **Remove ground wire** – Using a 10mm socket, remove ground wire from the inside of passenger side frame rail. Return fastener to vehicle owner.
2. **Lower spare tire for hitch installation.**



- 3a. **Spacer block installation** - Using masking tape, secure the U-Shaped spacer block to the inside of frame rail in the recessed area, centered around the hole in frame, both sides. **NOTE:** Do not cover ground wire hole below hitch mounting hole.



- 3b. **Spacer block installation** - Using masking tape, secure the .250 x 1.75 x 2.50 spacer block (item 6) to the forward mounting hole of hitch bracket outer surface, centering the hole in block with slot in bracket, both sides, **see figure 3.**



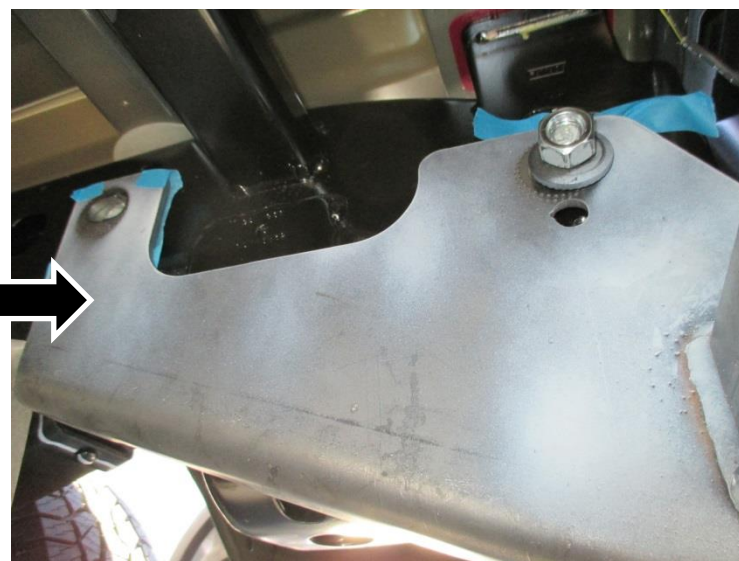
- 4a. **Install fasteners** – Feed the coiled end of fish wire through the attachment hole and out of the access hole in frame, **see fish wire example.**



4b. Install fasteners continued – Attach the spacer block and carriage bolt (items 1 & 2) to the fish wire and pull fasteners inside the frame, four (4) places. **NOTE: Keep fish wires attached to hardware and leave hardware inside the frame temporarily.**



5. Install hitch – Raise the hitch into position, feeding the end of fish wires through the holes in hitch, then pull the fasteners into position. Carefully remove the fish wires and loosely install the conical washers and hex nuts onto carriage bolts. Be careful to keep the carriage bolts from falling inside the frame. **NOTE: On the driver's side, hold the wiring harness away from hitch during installation.**



6. **Ground wire** – Using a 13mm socket, reattach the ground wire using the M8 bolt, lock washer, and flat washer provided, **see figure 1.**



Tighten all 5/8-11 Gr5 fasteners with torque wrench to 150 Lb.-Ft. (203 N*m)

⚠ Proper torque is needed to keep the hitch secure to the vehicle when towing.



Tighten all M8 CL8.8 fasteners with torque wrench to 20 Lb.-Ft. (27 N*m)



7. Raise the spare tire into the original stowed position.



Check out a selection of trailer hitches and towing offered in our online store.