



Installation Instructions

PART NUMBERS: 76134, 84134, CQT76134

Applications:

Years	Make	Models
2013-Current*	Toyota	Rav4

Installation Time:

2013-15 **20 Min.**

2016-Current* **45 Min.**

The time listed above is the average time for professional installers. If you do not feel comfortable performing this installation on your own or are in need of assistance, please contact a professional installer.



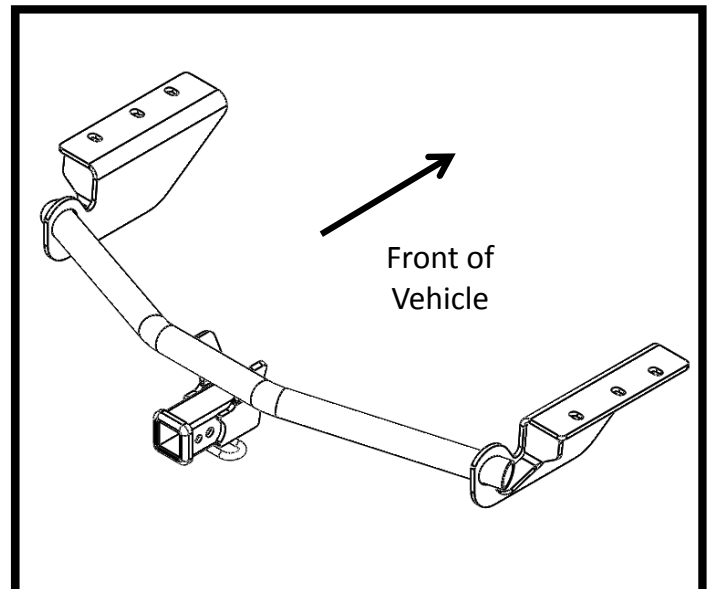
Representative Vehicle Photo

Equipment Required:

Safety Glasses	Ratchet	10 mm 12 mm 17 mm 19 mm Sockets	Exhaust Removal Pliers OR Pry Bar	Small Philips Screwdriver	* Optional Wire cutter	2013-15 Pliers
6" Socket Extension	Torque Wrench	Flat Head Screw Driver	Soapy water or small hole brush	Utility Knife OR Die Grinder	Tape	

DO NOT EXCEED LOWER OF TOWING VEHICLE MANUFACTURER'S RATING OR:

Hitch Type	Max Gross Trailer Weight	Max Tongue Weight
Weight Carrying	3500 lb. (1589 kg)	350 lb. (159 kg)
Weight Distributing	DO NOT USE WITH	SPRING BARS






Hitch Illustration

Always wear SAFETY GLASSES when installing hitch

Installation Instructions

PART NUMBERS: 76134, 84134, CQT76134

Fastener Kit : 76134F		
①	Qty. (5)	Bolt M12x1.25x40 CL10.9 
②	Qty. (5)	Conical washer 1/2" 
③	Qty. (2)	Cable ties 

Fascia trimming required -
Note: Obtain owners permission before installing
 Appearance panel trimming or removal required

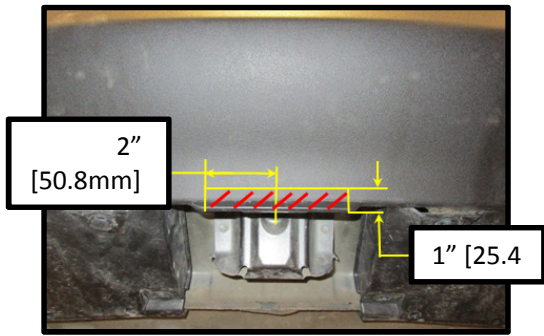


Figure A
 2013-2015
 Fascia trimming required

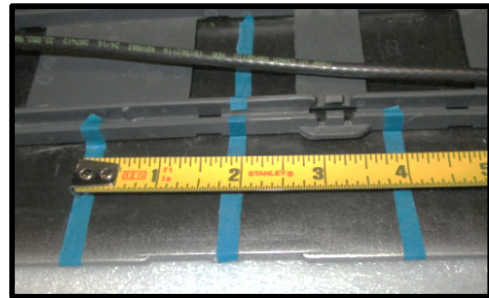
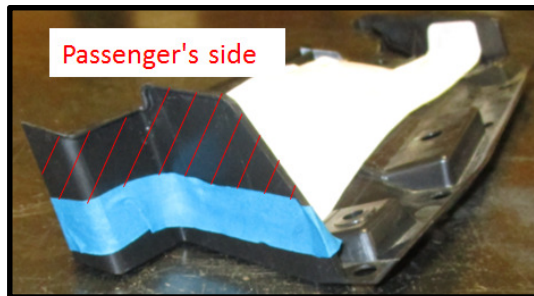
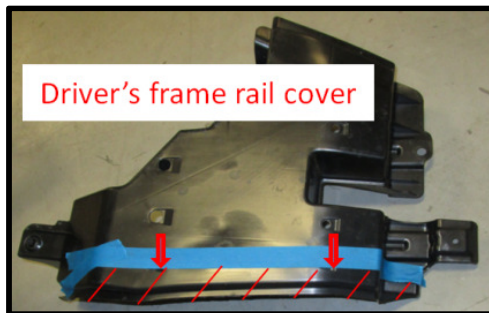


Figure 1
 2016- Current
 Fascia trimming required
 See Step 12.



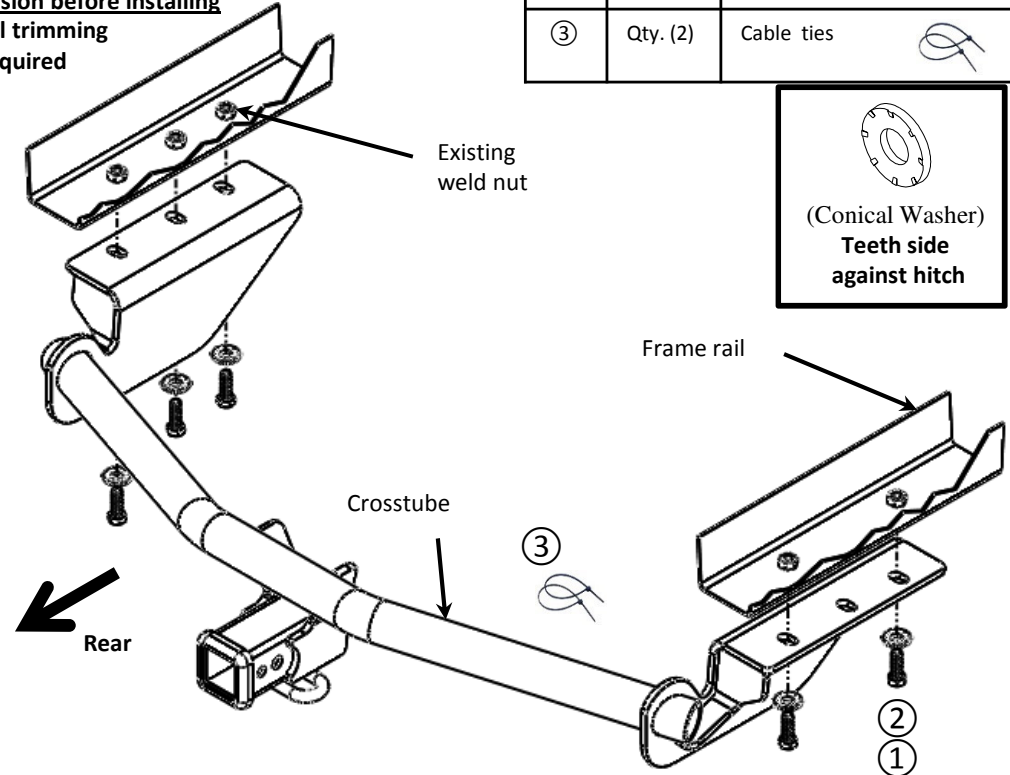
* Optional
 Passenger's side – trim
 1-1/4" [31.75mm]
 down on long side

Figure 2



* Optional
 Driver's side – trim
 along notches on
 underside

Figure 3



Lift gate sensor reduced to this area on vehicles with the "HANDS-FREE, FOOT-ACTIVATED POWER LIFTGATE" option.

Note: check hitch frequently, making sure all fasteners and ball are properly tightened. If hitch is removed, plug all holes in trunk pan or other body panels to prevent entry of water and exhaust fumes. A hitch or ball which has been damaged should be removed and replaced. Observe safety precautions when working beneath a vehicle and wear eye protection. Do not cut access or attachment holes with a torch.

This product complies with safety specifications and requirements for connecting devices and towing systems of the state of New York, V.E.S.C. Regulation V-5 and SAE J684.



Installation Instructions PART NUMBERS: 76134, 84134, CQT76134

Hitch installation on vehicle varies by year, follow the correct instruction per vehicle's year. Read through instruction prior to install.

Fascia trimming required - Note: Obtain owners permission before installing


Note: With the hitch installed on vehicle with "HANDS-FREE, FOOT-ACTIVATED POWER LIFTGATE" option it will work only in limited areas. See photo. Get owner approval before installation.

Note: If necessary clean the threads to the existing weldnuts. Carefully run the M12 bolts into the weld nuts or use spiral wire brush to clean the threads.

Installation for 2013-2015 Toyota Rav4:

- A. Follow steps 1-6, and 8.
- B. **Fascia Trimming:** Trim fascia - locate center of fascia and mark 2" [50.8mm] each way, mark 1" [25.4] up from fascia edge – (check inside of fascia to confirm no wiring or other obstruction in way before cutting) See Figure 1A
- C. **Bend tab:** Bend tab on end of frame rearward about 20 degrees. Both sides
- D. **Hitch installation:** - Move fascia tabs out of the way and raise the hitch over the exhaust on passenger side, slide hitch under fascia (gently pull fascia out) position hitch over existing weldnuts and loosely install M12 bolts ① and conical washers ② into weldnuts.
- E. Follow steps 10-11, 14-15 as necessary.

Installation for 2016- current Toyota Rav4:

1. **Mark centerline of appearance panel:** Mark centerline of appearance with marker or tape.
2. **Remove appearance panels:** If present, remove driver side plastic appearance panel removal - using flat head screwdriver and 10 mm socket to remove (2) plastic rivets and (1) flange nut from the panel. If present; remove additional plastic appearance panels (2) located between fascia and end panel both sides. Trim or return, additional panel to vehicle owner.
3. **Remove tie down:** Remove Tie down bracket - using 17 mm socket to remove (2) bolts from bracket. Return to vehicle owner.
4. **Disconnect electrical:** If present, disconnect the electrical wiring located on driver side rear quarter panel.
5. **Lower exhaust:** Remove (1) rubber isolator from exhaust rod on passenger side. Spraying a lubricant or soapy water on the metal hanger rod and the rubber isolator helps with removal. For additional clearance remove next rubber isolator. Support the exhaust system to prevent damage.
6. **Exhaust rod removal:** – Use 12 mm socket to remove (2) bolts that secure the exhaust rod near trunk pan. Return to vehicle owner.
7. **Fascia removal:** Remove using a 10mm socket (1) bolt from under the vehicle at bottom of wheel well, and (2) phillips screws with a small phillips screwdriver(each side). Open liftgate and remove (2) bolts with a 10mm socket. Gently pull up from the rear wheel well ,lower bumper panel each side, unclipping the tabs inside continue to gently remove along inside hatch covering. Lifting fascia up from bottom as needed. Carefully pulling the fascia away from the vehicle. If present disconnect any wiring harness or sensor from fascia. Both sides. Carefully set the rear fascia aside.
8. **Remove keyless entry antenna:** If present, using a 12mm socket remove the keyless entry antenna, second attachment point.
9. **Hitch installation:** - Raise the hitch over exhaust on passenger side and into position over existing weldnuts and loosely install M12 bolts ① and conical washers ② into weldnuts.
10. **Tighten all fasteners with torque wrench to 76 Lb.-Ft. (103 N*M)**  **Proper torque is needed to keep the hitch secure to the vehicle when towing.**
11. **Relocate keyless entry antenna:** If removed, use cables ties ③ attach keyless entry antenna under crosstube of hitch in same basic area it was removed from.
12. **Trim fascia:** Trim fascia - locate center of fascia and mark 2" [50.8mm] each way, mark 1-3/4" [44.45] up from fascia edge – (if vehicle is equipped with kick sensor move wire out of the track to prevent cutting. (If cutting into track sensor area wire can be moved to outside then reset in track). See Figure 1B
13. **Reinstall fascia:** Starting from the center of the vehicle lineup and gently reinstall the rear fascia and all fasteners in reverse order step 7. (Note: reattach any wiring harness if removed)
14. **Reinstall exhaust:** Raise exhaust back into position and reattach rubber isolator/s. Remove exhaust support if used.
15. Trim or return appearance panel. See figures 1-3.

Note: check hitch frequently, making sure all fasteners and ball are properly tightened. If hitch is removed, plug all holes in trunk pan or other body panels to prevent entry of water and exhaust fumes. A hitch or ball which has been damaged should be removed and replaced. Observe safety precautions when working beneath a vehicle and wear eye protection. Do not cut access or attachment holes with a torch.

This product complies with safety specifications and requirements for connecting devices and towing systems of the state of New York, V.E.S.C. Regulation V-5 and SAE J684.

Accept no compromises, choose only quality trailer hitches and towing.