



Installation Instructions

PART NUMBERS: 76034, 84034



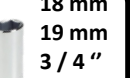






Applications:

Years	Make	Models
2011-Current*	Ford	Explorer

Installation Time: 45 Min.

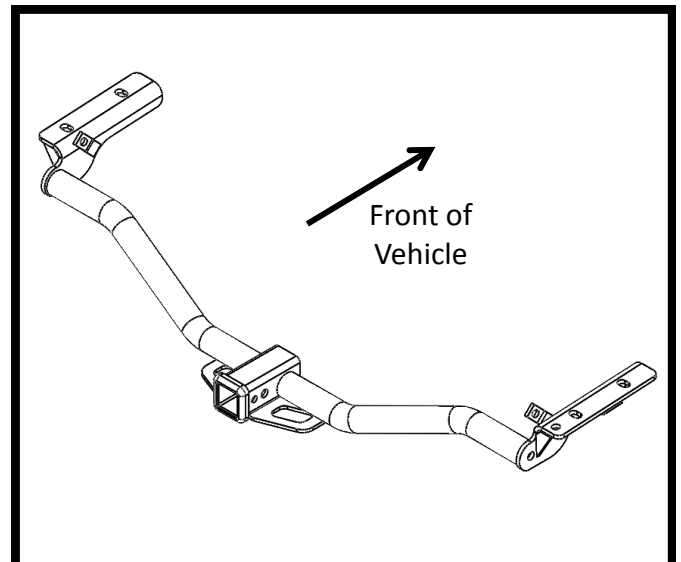
The time listed above is the average time for professional installers. If you do not feel comfortable performing this installation on your own or are in need of assistance, please contact a professional installer.

Equipment Required:

 Safety Glasses	 Ratchet	 18 mm 19 mm 3 / 4 " 11/16"	 Torque Wrench	 Optional Universal Joint Socket
 Lubricant or Soapy water	 6" socket Extension	 Pry Bar	 or Exhaust Removal Pliers	



Representative Vehicle Photo



Hitch Illustration

**DO NOT EXCEED LOWER OF TOWING VEHICLE
MANUFACTURER'S RATING OR:**

Hitch Type	Max Gross Trailer Weight	Max Tongue Weight
Weight Carrying	4500 lb. (2043 kg)	675 lb. (306 kg)
Weight Distributing	5000 lb. (2270 kg)	500 lb. (227 kg)



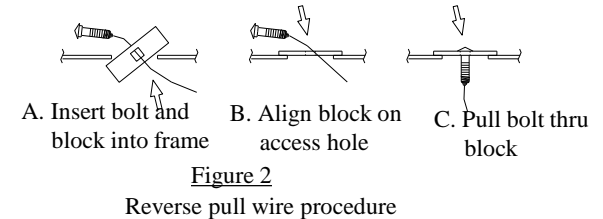
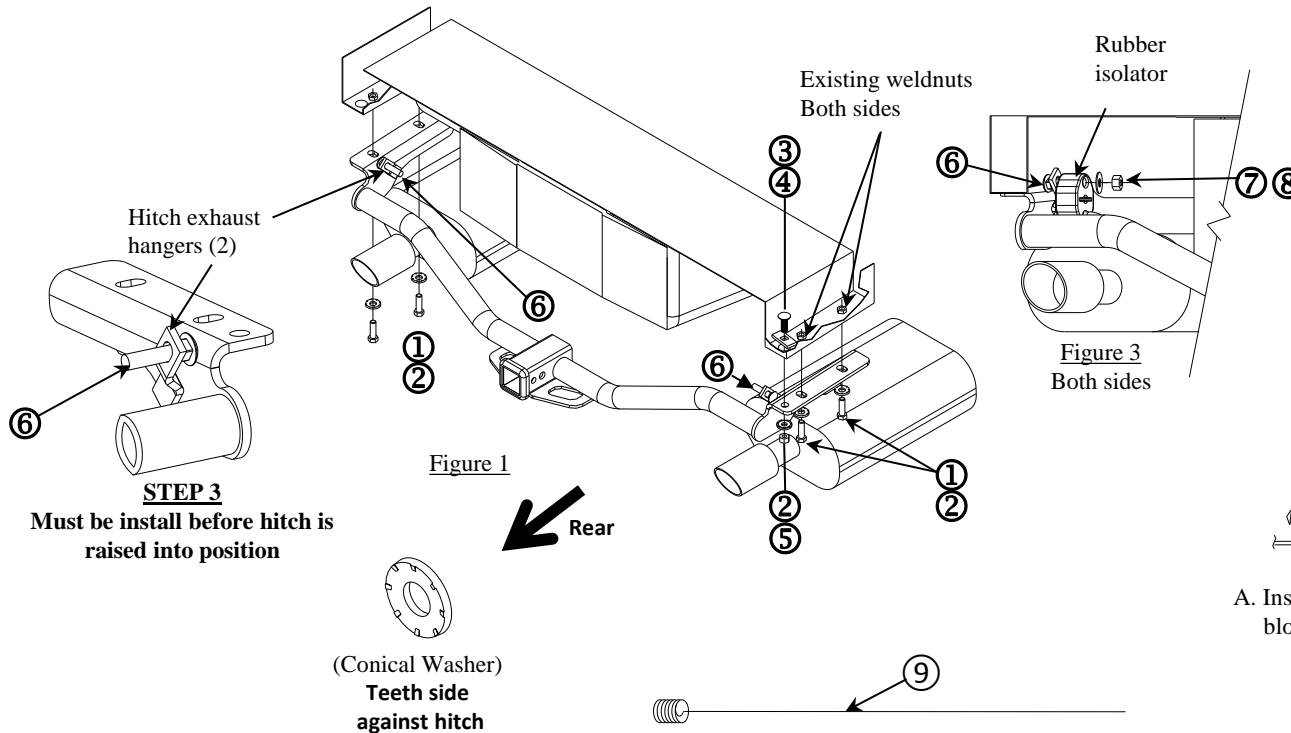
Always wear **SAFETY GLASSES** when installing hitch

Installation Instructions

PART NUMBERS: 76034, 84034

Fastener Kit : 76034F

①	Qty. (4)	Hex bolt M12 x 1.75 40mm CL8.8	
②	Qty. (5)	Conical washer 1/2"	
③	Qty. (1)	Bolt Carriage 1/2-13 x 1.50 GR5	
④	Qty. (1)	Spacer 1/4" x 1.00 x 2.00	
⑤	Qty. (1)	Hex nut 1/2-13	
⑥	Qty. (2)	Bolt carriage 7/16-14 x 2.500 GR5	
⑦	Qty. (2)	Flat washer 7/16"	
⑧	Qty. (2)	Hex lock nut 7/16-14	
⑨	Qty. (1)	Pull wire 1/2-13	



For vehicles with OEM Tow Hook: Tow hook must be permanently removed for hitch installation.

- Lower exhaust system at the rubber isolator (3 places). Note: Spraying a lubricant or soapy water on the metal hanger rod and the rubber isolator helps removal. Remove rubber isolator from mufflers only (2) to be re-install step 3. Be careful not to allow muffler to fall under its own weight.
- Remove and return exhaust hanger, and/or exhaust hanger with factory tow hook, and fasteners to vehicle owner.
- Install carriage bolts (item 6) into exhaust hangers on hitch. Install rubber isolators removed in step 1, onto 7/16 carriage bolts on hitch. Install flat washer, and 7/16-14 hex lock nut. See Figure 3.
- Feed 1/2-13 carriage bolt and spacer into passenger side frame rail as shown using reverse pullwire procedure. Leave pullwire attached. See Figure 2.
- Feed pull wire through hole in bracket on passenger side. Raise hitch into position, over exhaust and align with existing weldnuts in frame rail and 1/2-13 carriage bolt installed in Step 4. Install M12 hex bolts and conical washer as shown.
- Remove pullwire and install conical washer and hex nut on carriage bolt.
- Tighten all M12 CL8.8 fasteners with torque wrench to 68 Lb.-Ft (92 N*M), Tighten all 1/2-13 GR5 fasteners with torque wrench to 75 Lb.-Ft. (102 N*M)**
Proper torque is needed to keep the hitch secure to the vehicle when towing.
- Raise exhaust back into position (3 places). Note: Spraying a lubricant or soapy water on the metal hanger rod and the rubber isolator helps.

Note: check hitch frequently, making sure all fasteners and ball are properly tightened. If hitch is removed, plug all holes in trunk pan or other body panels to prevent entry of water and exhaust fumes. A hitch or ball which has been damaged should be removed and replaced. Observe safety precautions when working beneath a vehicle and wear eye protection. Do not cut access or attachment holes with a torch.

This product complies with safety specifications and requirements for connecting devices and towing systems of the state of New York, V.E.S.C. Regulation V-5 and SAE J684.

For vehicles with OEM Tow Hook: Tow hook must be permanently removed for hitch installation.

1. Lower exhaust system at the rubber isolator (3 places). Note: Spraying a lubricant or soapy water on the metal hanger rod and the rubber isolator helps removal. Remove rubber isolator from mufflers only (2) to be re-install step 3. **Be careful not to allow muffler to fall under its own weight.**



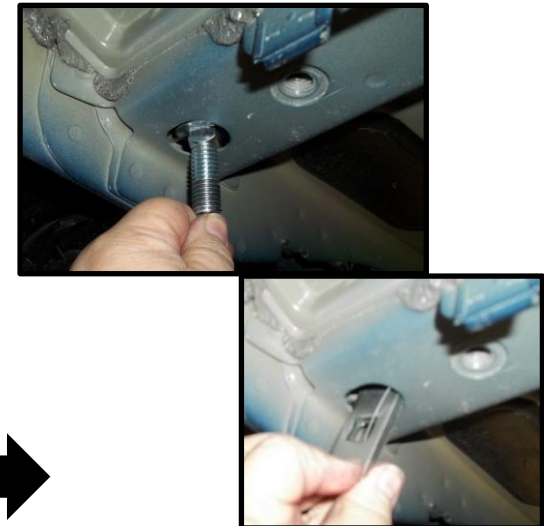
2. Remove and return exhaust hanger, and/or exhaust hanger with factory tow hook, and fasteners to vehicle owner.



3. Install carriage bolts (item 6) into exhaust hangers on hitch. Install rubber isolators removed in step 1, onto 7/16 carriage bolts on hitch. Install flat washer, and 7/16-14 hex lock nut. See Figure 3.



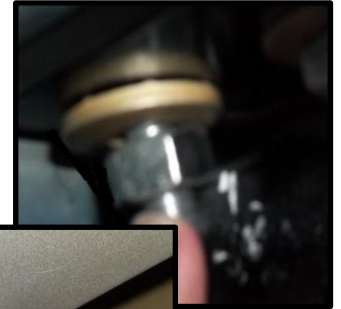
4. Feed ½-13 carriage bolt and spacer into passenger side frame rail as shown using reverse pullwire procedure. Leave pullwire attached. See Figure 2.



5. Feed pull wire through hole in bracket on passenger side. Raise hitch into position, over exhaust and align with existing weldnuts in frame rail and 1/2-13 carriage bolt installed in Step 4. Install M12 hex bolts and conical washer as shown.

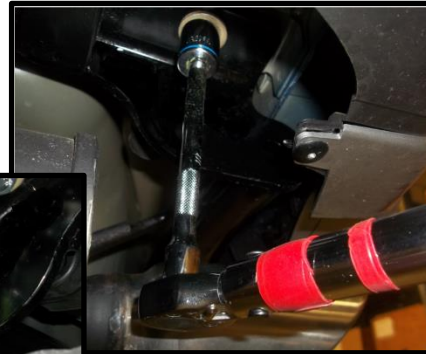


6. Remove pullwire and install conical washer and hex nut on carriage bolt.



7. **Tighten all M12 CL.8.8 fasteners with torque wrench to 68 Lb.-Ft (92 N*M) , Tighten all 1/2-13 GR5 fasteners with torque wrench to 75 Lb.-Ft. (102 N*M)**

⚠ Proper torque is needed to keep the hitch secure to the vehicle when towing.



8. Raise exhaust back into position (3 places). Note: Spraying a lubricant or soapy water on the metal hanger rod and the rubber isolator helps

