

Installation Instructions

PART NUMBERS: 76023, 84023, CQT76023

Applications:

Years	Make	Models
2017-Current*	GMC	Acadia
2019-Current*	CHEVY	Blazer

*Visit our website for the most up to date information regarding application years and trim levels.

Installation Time: **90 min**

The time listed above is the average time for professional installers. If you do not feel comfortable performing this installation on your own or are in need of assistance, please contact a professional installer.



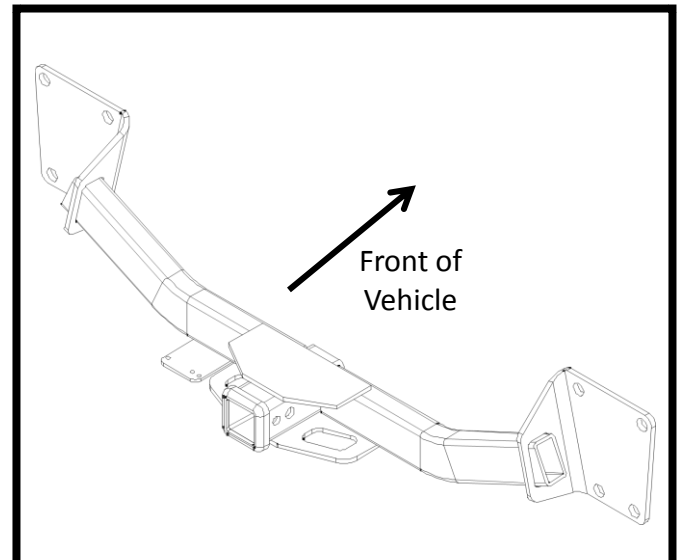
Representative Vehicle Photo

Equipment Required:



**DO NOT EXCEED LOWER OF TOWING VEHICLE
MANUFACTURER'S RATING OR:**

Hitch Type	Max Gross Trailer Weight	Max Tongue Weight
Weight Carrying	4500 lb. (2043 kg)	675 lb. (306 kg)
Weight Distributing	4500 lb. (2043 kg)	675 lb. (306 kg)



Hitch Illustration

Always wear SAFETY GLASSES when installing hitch

Installation Instructions (Acadia)

PART NUMBERS: 76023, 84023, CQT76023

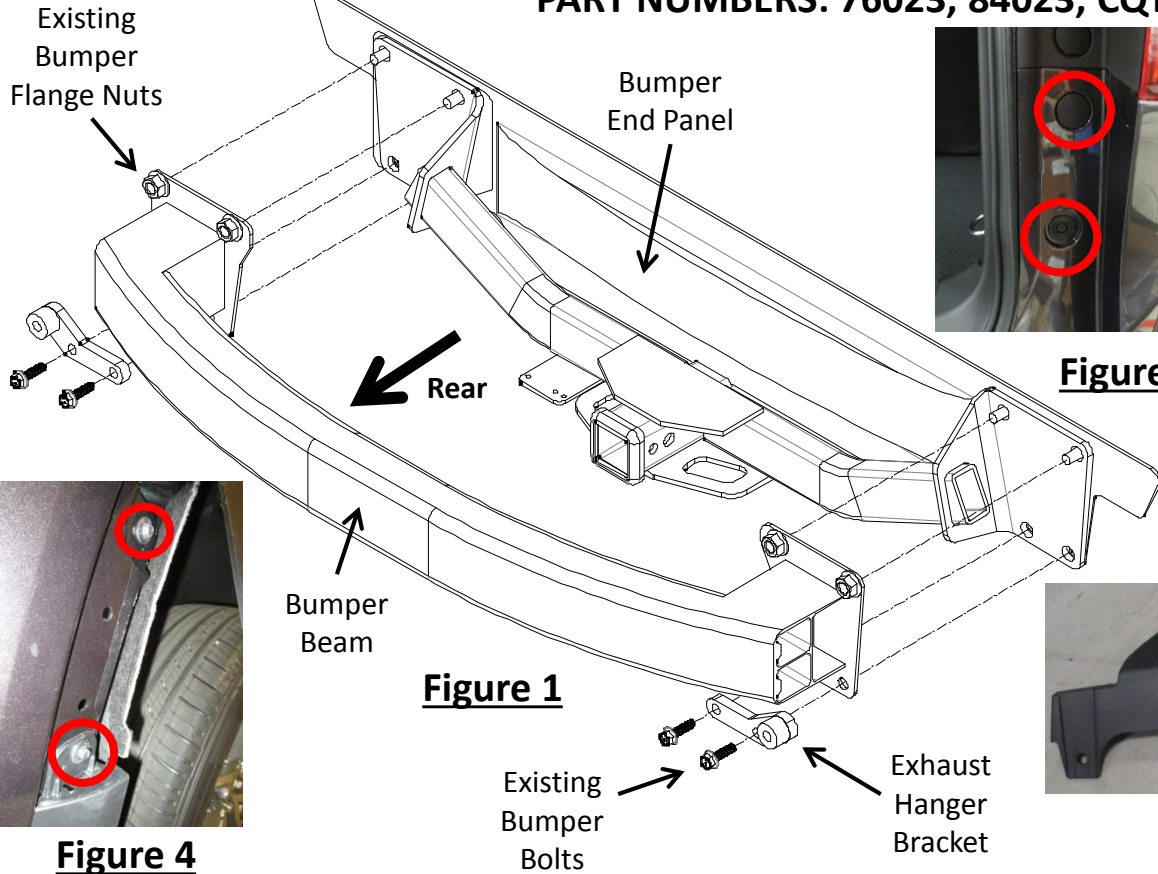
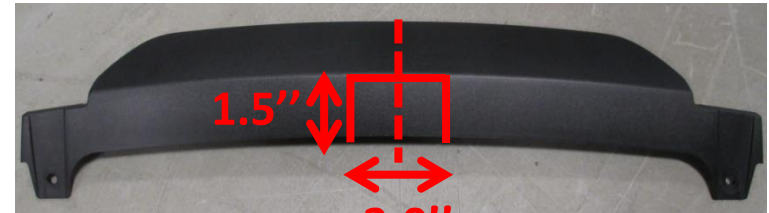


Figure 2

**Fasteners
Typical
Both Sides**

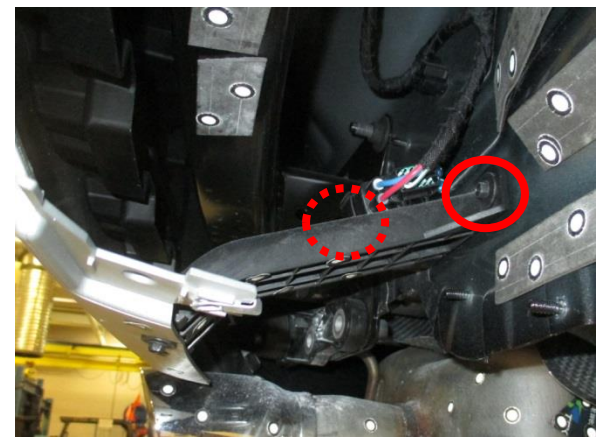


- Fascia door and bottom fascia support brackets removal** - use 7 mm socket to remove (2) bolts from bottom fascia door, see **Figure 2**. Use 7 mm socket to remove (3) bolts from bottom fascia support bracket each side and unclip the plug if present. Return bottom fascia support brackets to owner.
- Fascia removal** - open the trunk and use 7mm socket & T15 driver to remove (2) bolts as shown in **Figure 3**. Use phillips screwdriver and T15 driver to remove (3) bolts from plastic mud flap each side. Use T15 driver to remove (1) bolt from bottom fascia, and (1) bolt from wheel well liner each side. Gently pull off the upper wheel well body trim piece and remove (2) bolts behind it with 7 mm socket each side, see **Figure 4**. Gently remove the fascia and attachment straps behind wheel well liner. Unplug the wiring on driver side if present. Carefully set the fascia and straps aside for reinstallation.
- Bumper beam and exhaust hanger removal** – use 15mm socket to remove (2) flange nuts and (2) M10 bolts from bumper beam each side. Gently remove the bumper beam and exhaust hanger. Use a stand to support exhaust to prevent it from being damaged.
- Hitch installation** – raise the hitch and hang it on the studs on the bumper end panel. Raise the bumper beam and exhaust hanger bracket to sandwich the hitch, see **Figure 1**. Reuse the bumper fasteners and loosely fasten them.
- Tighten all fasteners with torque wrench to 53 Lb.-Ft. (72 N*M).**
- Reinstall all fasteners, straps, mud flaps, and fascia removed in Step 1,2.
- Fascia door can be trimmed 1.5" tall by 3.0" wide and reinstalled as shown in **Figure 5**. Get customer approval before trimming the fascia door

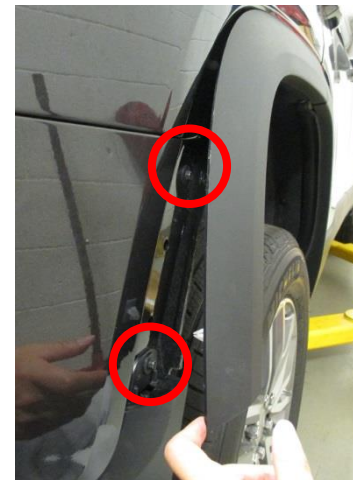
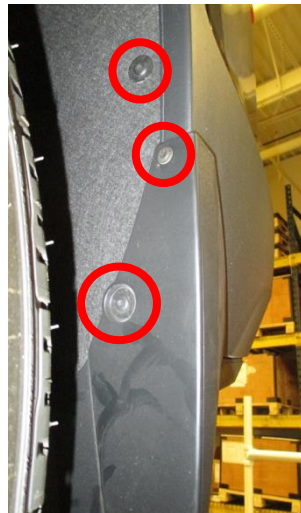
Proper torque is needed to keep the hitch secure to the vehicle when towing.

Note: check hitch frequently, making sure all fasteners and ball are properly tightened. If hitch is removed, plug all holes in trunk pan or other body panels to prevent entry of water and exhaust fumes. A hitch or ball which has been damaged should be removed and replaced. Observe safety precautions when working beneath a vehicle and wear eye protection. Do not cut access or attachment holes with a torch. This product complies with safety specifications and requirements for connecting devices and towing systems of the state of New York, V.E.S.C. Regulation V-5 and SAE J684.

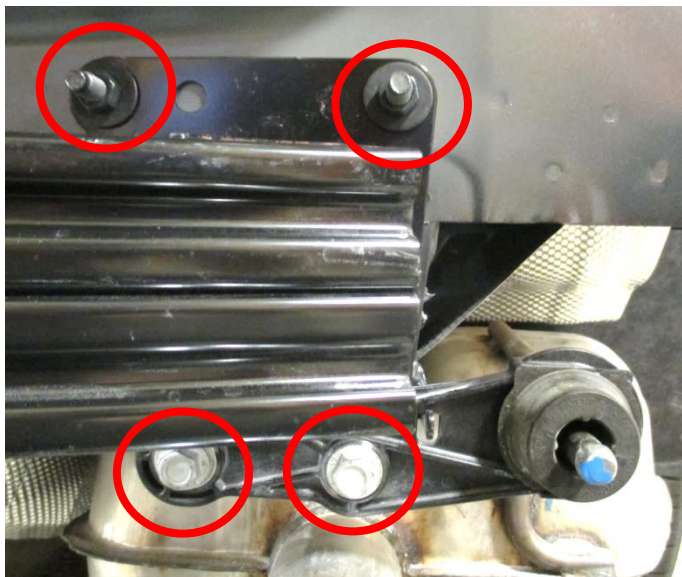
1. Fascia door and fascia bottom support brackets removal - use 7 mm socket to remove (2) bolts from bottom fascia door, see [Figure 2](#). Use 7 mm socket to remove (3) bolts from bottom fascia support bracket each side and unclip the plug if present. Return bottom fascia support brackets to owner.



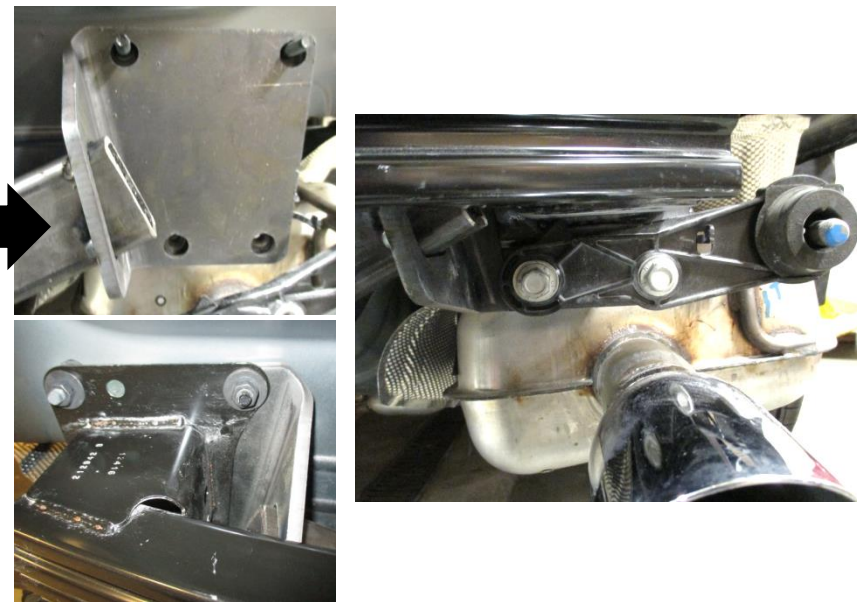
2. Fascia removal - open the trunk and use 7mm socket & T15 driver to remove (2) bolts as shown in [Figure 3](#). Use phillips screwdriver and T15 driver to remove (3) bolts from plastic mud flap each side. Use T15 driver to remove (1) bolt from bottom fascia, and (1) bolt from wheel well liner each side. Gently pull off the upper wheel well body trim piece and remove (2) bolts behind it with 7 mm socket each side, see [Figure 4](#). Gently remove the fascia and attachment straps behind wheel well liner. Unplug the wiring on driver side if present. Carefully set the fascia and straps aside for reinstallation.



3. Bumper beam and exhaust hanger removal – use 15mm socket to remove (2) flange nuts and (2) M10 bolts from bumper beam each side. Gently remove the bumper beam and exhaust hanger. Use a stand to support exhaust to prevent it from being damaged.



4. Hitch installation – raise the hitch and hang it on the studs on the bumper end panel. Raise the bumper beam and exhaust hanger bracket to sandwich the hitch, see **Figure 1**. Reuse the bumper fasteners and loosely fasten them.

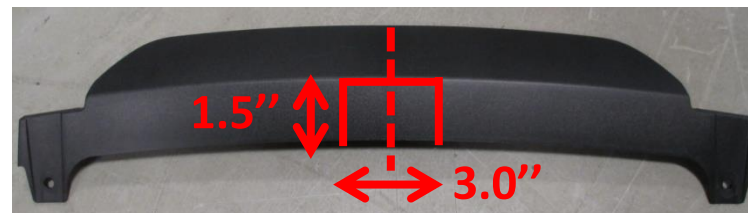


5. Tighten all fasteners with torque wrench to 53 lb.-ft. (72 N*M).

⚠ Proper torque is needed to keep the hitch secure to the vehicle when towing.

6. Reinstall all fasteners, straps, mud flaps, and fascia removed in Step 1,2.

7. Fascia door can be trimmed 1.5" tall by 3.0" wide and reinstalled as shown in **Figure 5**. Get customer approval before trimming the fascia door



Always wear SAFETY GLASSES when installing hitch

Installation Instructions (Blazer)

PART NUMBERS: 76023, 84023, CQT76023

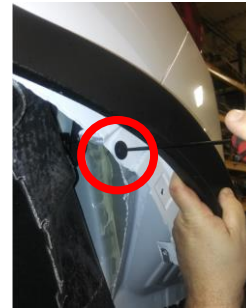
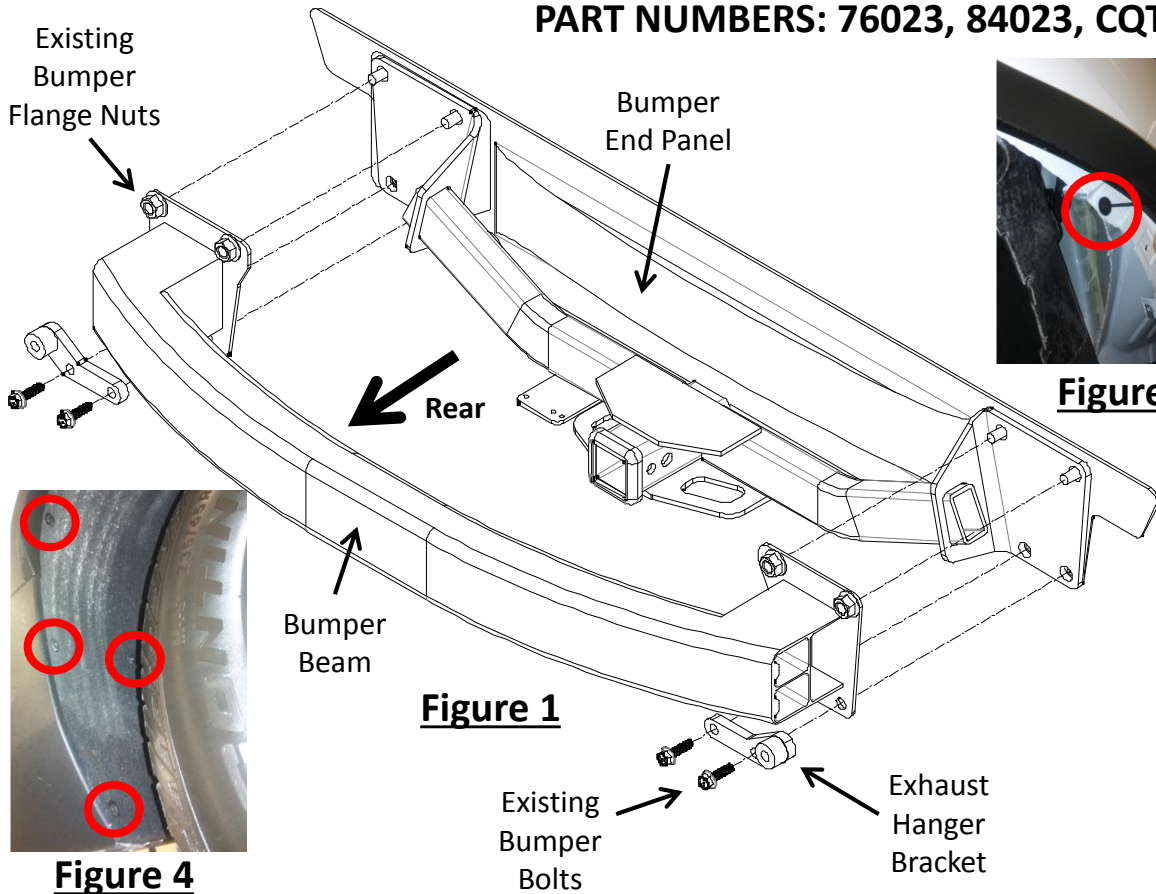


Figure 3



Figure 2



Figure 4

**Fasteners
Typical
Both Sides**



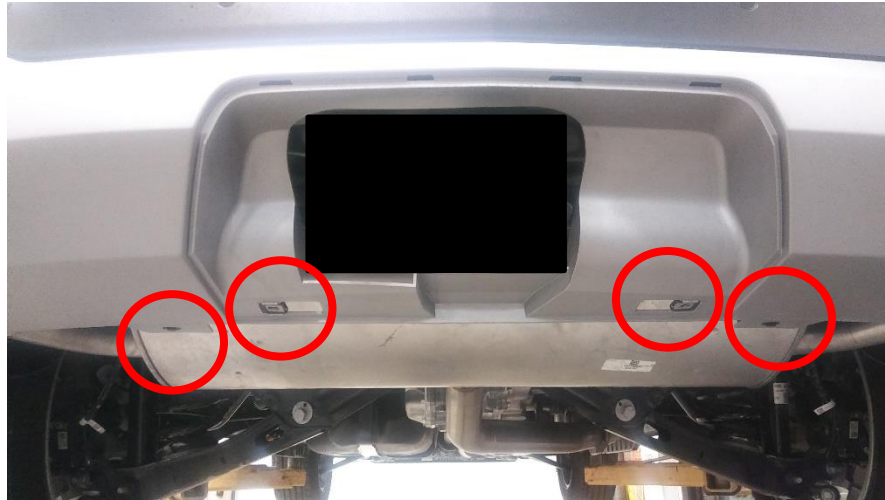
Figure 5

1. **Fascia door and bottom fascia support brackets removal** - remove (2) thumb screws from bottom fascia door, see [Figure 2](#). Use 7 mm socket to remove (1) bolt from bottom fascia support bracket, each side.
2. **Fascia removal** - open the trunk and use a T15 driver to remove (2) bolts. Use T15 driver to remove (4) bolts from wheel well liner each side [Figure 4](#). Pull back the wheel well liner and use a 7 mm socket to remove (1) bolt, each side. Gently pull off the upper wheel well body trim piece and remove (1) bolt behind it with a 7 mm socket, each side, see [Figure 3](#). Gently remove the fascia and unplug the wiring on driver side if present. Carefully set the fascia aside for reinstallation.
3. **Bumper beam and exhaust hanger removal** - use 15mm socket to remove (2) flange nuts and (2) M10 bolts from bumper beam, each side. Gently remove the bumper beam and exhaust hanger. Use a stand to support exhaust to prevent it from being damaged.
4. **Hitch installation** - raise the hitch and hang it on the studs on the bumper end panel. Raise the bumper beam and exhaust hanger bracket to sandwich the hitch, see [Figure 1](#). Reuse the bumper fasteners and loosely fasten them.
5. **Tighten all fasteners with torque wrench to 53 Lb.-Ft. (72 N*M).**
6. Reinstall all fasteners and fascia removed in Step 1,2.
7. Fascia door to be trimmed as shown in [Figure 5](#). Get customer approval before trimming fascia.

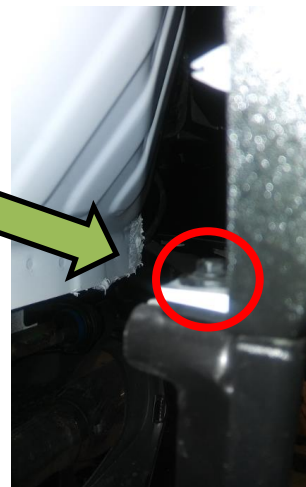
Proper torque is needed to keep the hitch secure to the vehicle when towing.

Note: check hitch frequently, making sure all fasteners and ball are properly tightened. If hitch is removed, plug all holes in trunk pan or other body panels to prevent entry of water and exhaust fumes. A hitch or ball which has been damaged should be removed and replaced. Observe safety precautions when working beneath a vehicle and wear eye protection. Do not cut access or attachment holes with a torch. This product complies with safety specifications and requirements for connecting devices and towing systems of the state of New York, V.E.S.C. Regulation V-5 and SAE J684.

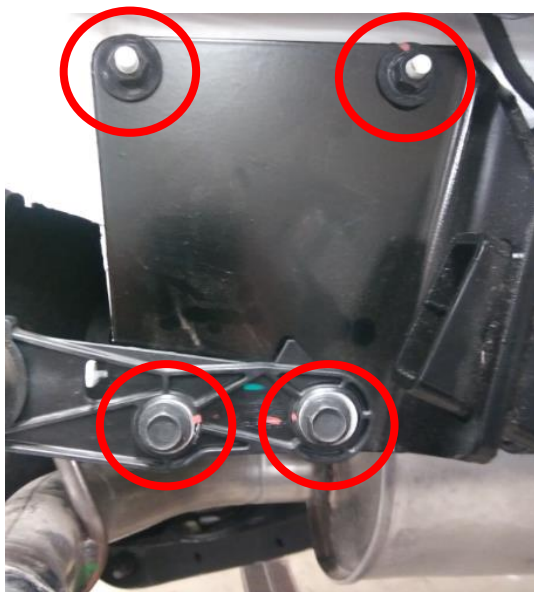
1. Fascia door and fascia bottom support brackets removal - remove (2) thumb screws from bottom fascia door, see **Figure 2**. Use 7 mm socket to remove (1) bolt from bottom fascia support bracket, each side.



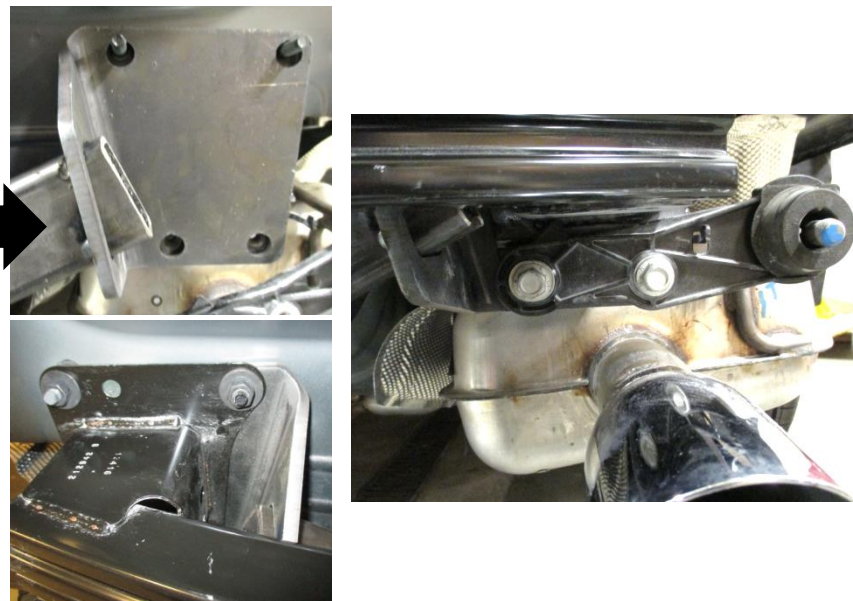
2. Fascia removal - open the trunk and use a T15 driver to remove (2) bolts. Use T15 driver to remove (4) bolts from wheel well liner each side **Figure 4**. Pull back the wheel well liner and use a 7 mm socket to remove (1) bolt, each side. Gently pull off the upper wheel well body trim piece and remove (1) bolt behind it with a 7 mm socket each side, see **Figure** Gently remove the fascia and unplug the wiring on driver side if present. Carefully set the fascia aside for reinstallation.



3. Bumper beam and exhaust hanger removal – use 15mm socket to remove (2) flange nuts and (2) M10 bolts from bumper beam, each side. Gently remove the bumper beam and exhaust hanger. Use a stand to support exhaust to prevent it from being damaged.



4. Hitch installation – raise the hitch and hang it on the studs on the bumper end panel. Raise the bumper beam and exhaust hanger bracket to sandwich the hitch, see **Figure 1**. Reuse the bumper fasteners and loosely fasten them.



5. Tighten all fasteners with torque wrench to 53 lb.-ft. (72 N*M).

⚠ Proper torque is needed to keep the hitch secure to the vehicle when towing.

6. Reinstall all fasteners and fascia removed in Step 1,2.

7. Fascia door to be trimmed as shown in **Figure 5**. Get customer approval before trimming fascia.



Looking for dependable trailer hitches and towing? Rely on Draw-Tite for quality and long-lasting products.