

WARNING

To prevent **SERIOUS INJURY, DEATH** or **PROPERTY DAMAGE**:

- **ALWAYS** read, understand and follow warnings and instructions for your hitch **BEFORE** installation. Keep for future reference.
- **DO NOT** cut, weld or modify this receiver.
- **CHECK** all fasteners are tight and your hitch is securely mounted to your vehicle periodically.
- **ALWAYS** read, understand and follow all warnings and instructions for your vehicle and for other accessories you will use with your hitch **BEFORE** use.
- **LOAD** the trailer heavier in front.
- **DO NOT** exceed lower of towing vehicle manufacturer's rating or:

Hitch Type	Max Gross Trailer Weight	Max Tongue Weight
Weight Carrying	11,000 lb. (4,990 kg)	1,100 lb. (499 kg)
Weight Distributing	14,000 lb. (6,350 kg)	1,400 lb. (635 kg)

- **ALWAYS** wear your seatbelt.
- **SLOW DOWN** when towing, **NEVER** exceed any posted speed limit.
- If **EXCESS SWAY** occurs, take your foot off the gas pedal and hold the steering wheel as steady as possible. **DO NOT** apply your brakes and **DO NOT** speed up.

Installation Instructions

PART NUMBERS: 41954, 96954, CQT41954

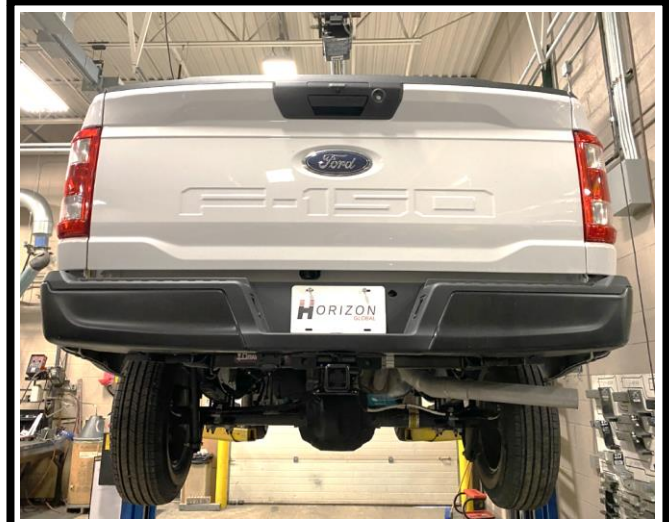
Applications:

Years	Make	Models
2015-Current*	Ford	F150

*Visit our website for the most up to date information regarding application years and trim levels.

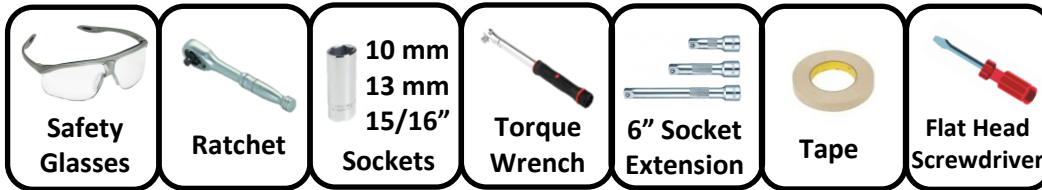
Installation Time: 30 min.

The time listed above is the average time for professional installers. If you do not feel comfortable performing this installation on your own or are in need of assistance, please contact a professional installer.



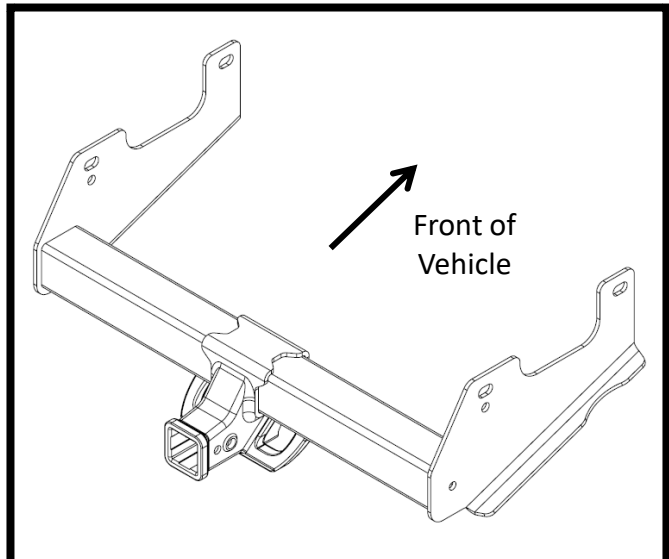
Representative Vehicle Photo

Equipment Required:



DO NOT EXCEED LOWER OF TOWING VEHICLE MANUFACTURER'S RATING OR:

Hitch Type	Max Gross Trailer Weight	Max Tongue Weight
Weight Carrying	11,000 lb. (4,990 kg)	1,100 lb. (499 kg)
Weight Distributing	14,000 lb. (6,350 kg)	1,400 lb. (635 kg)



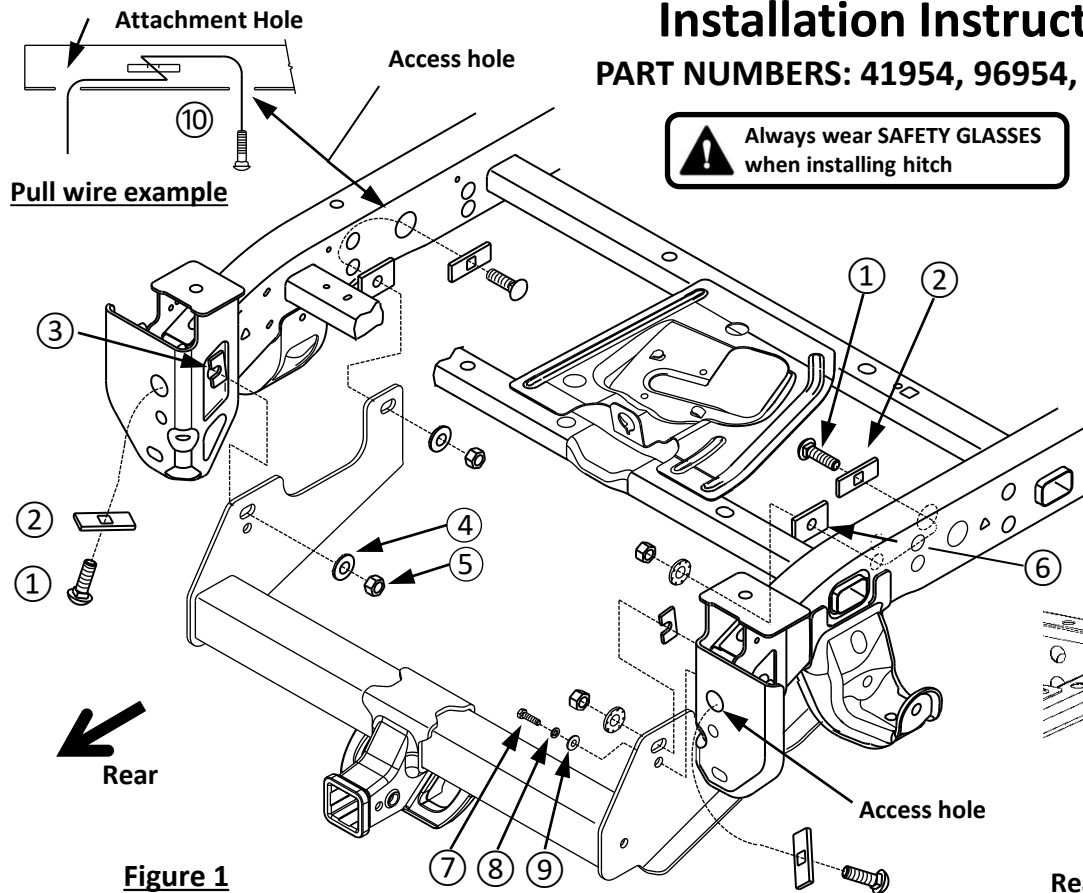
Hitch Illustration

Installation Instructions

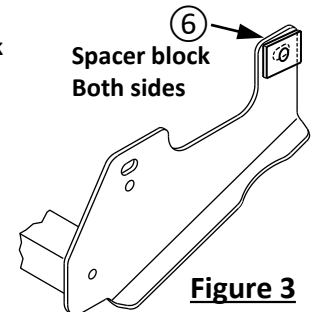
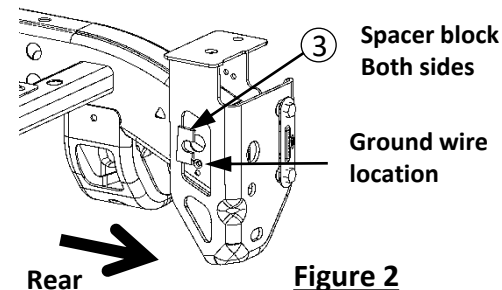
PART NUMBERS: 41954, 96954, CQT41954

Fastener Kit: 41954F

Always wear SAFETY GLASSES when installing hitch



Fastener Kit: 41954F			
①	Qty. (4)	Carriage bolt 5/8-11 x 2.00 Gr5	
②	Qty. (4)	Spacer block .250 x 1.12 x 3.00	
③	Qty. (2)	Spacer block (U-Shaped) .188 x 1.00 x 2.00	
④	Qty. (4)	Conical washer 5/8	
⑤	Qty. (4)	Hex nut 5/8-11 Gr2	
⑥	Qty. (2)	Spacer block .250 x 1.75 x 2.50	
⑦	Qty. (1)	Bolt M8 X 1.25 X 30 CL8.8	
⑧	Qty. (1)	Lock washer 5/16	
⑨	Qty. (1)	Flat washer 5/16	
⑩	Qty. (4)	Pull wire 5/8	
⑪	Qty. (2)	Cable tie	



- Remove ground wire and wiring harness** - Using a 10mm socket, remove ground wire from the inside of passenger side frame rail. Return fastener to vehicle owner. For model year after 2021, using flat head screwdriver, detach wiring harness on driver side if present.
- Lower spare tire for hitch installation.**
- Spacer block installation** - Using masking tape, secure the U-Shaped spacer block ③ to the inside of frame rail in the recessed area, centered around the hole in frame, both sides. **NOTE:** Do not cover ground wire hole below hitch mounting hole, see **Figure 2**. Using masking tape, secure the .250 x 1.75 x 2.50 spacer block ⑥ to the forward mounting hole of hitch bracket outer surface, centering the hole in block with slot in bracket, both sides, see **Figure 3**.
- Install fasteners** - Feed 5/8 pull wire ⑩ through the attachment hole and out of the access hole in frame, see **pull wire example**. Attach the spacer block ② and 5/8 carriage bolt ① to the pull wire and pull fasteners inside the frame, four (4) places. **NOTE:** Keep pull wires attached to hardware and leave hardware inside the frame temporarily.
- Install hitch** - Raise the hitch into position, feeding the end of pull wires through the holes in hitch, then pull the fasteners into position. Carefully remove the pull wires and loosely install the conical washers ④ and hex nuts ⑤ onto carriage bolts. Be careful to keep the carriage bolts from falling inside the frame. **NOTE:** On the driver's side, hold the wiring harness away from hitch during installation.
- Reinstall ground wire and wiring harness** - Using a 13mm socket, reattach the ground wire using the M8 bolt ⑦, lock washer ⑧, and flat washer ⑨ provided, see **Figure 1**. Bend or flatten the ground wire bracket if needed. Using cable tie ⑪, reattach the wiring harness to the chassis near its original location.
Tighten all 5/8-11 Gr5 fasteners with torque wrench to 150 Lb.-Ft. (203 N*m)
Tighten all M8 CL8.8 fasteners with torque wrench to 20 Lb.-Ft. (27 N*m)

Proper torque is needed to keep the hitch secure to the vehicle when towing.

- Raise the spare tire into the original stowed position.

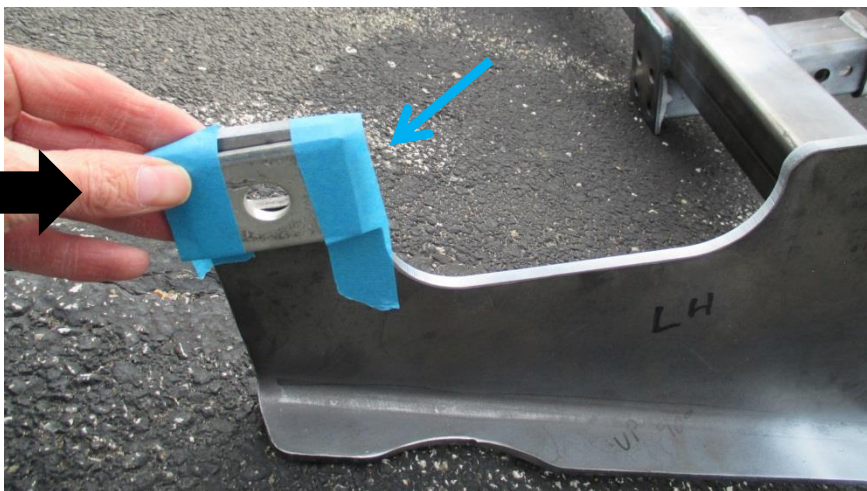
- 1. Remove ground wire and wiring harness** - Using a 10mm socket, remove ground wire from the inside of passenger side frame rail. Return fastener to vehicle owner. For model year after 2021, using flat head screwdriver, detach wiring harness on driver side if present.
- 2. Lower spare tire for hitch installation.**



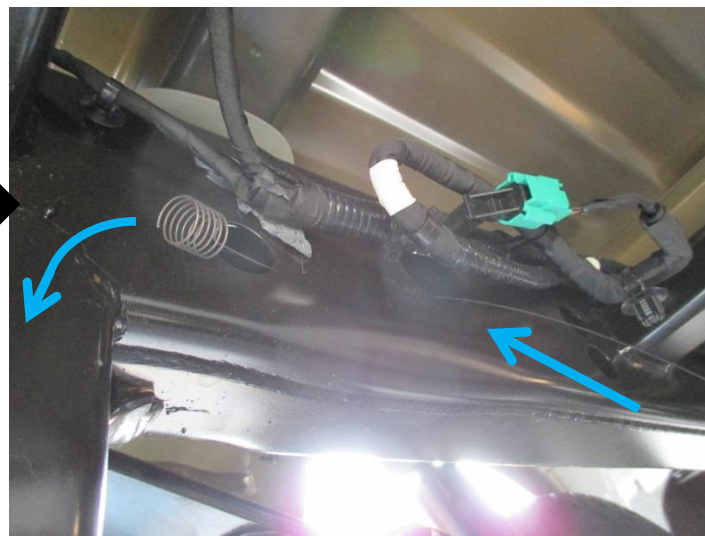
- 3. Spacer block installation** - Using masking tape, secure the U-Shaped spacer block ③ to the inside of frame rail in the recessed area, centered around the hole in frame, both sides. NOTE: Do not cover ground wire hole below hitch mounting hole, see Figure 2.



- 3. Using masking tape, secure the .250 x 1.75 x 2.50 spacer block ⑥ to the forward mounting hole of hitch bracket outer surface, centering the hole in block with slot in bracket, both sides, see Figure 3.**



- 4. Install fasteners** - Feed 5/8 pull wire ⑩ through the attachment hole and out of the access hole in frame, see pull wire example.



4. Attach the spacer block ② and 5/8 carriage bolt ① to the pull wire and pull fasteners inside the frame, four (4) places. **NOTE:** Keep pull wires attached to hardware and leave hardware inside the frame temporarily.



5. **Install hitch** - Raise the hitch into position, feeding the end of pull wires through the holes in hitch, then pull the fasteners into position. Carefully remove the pull wires and loosely install the conical washers ④ and hex nuts ⑤ onto carriage bolts. Be careful to keep the carriage bolts from falling inside the frame. **NOTE:** On the driver's side, hold the wiring harness away from hitch during installation



6. Reinstall ground wire and wiring harness - Using a 13mm socket, reattach the ground wire using the M8 bolt (7), lock washer (8), and flat washer (9) provided, see Figure 1. Bend or flatten the ground wire bracket if needed. Using cable tie (11), reattach the wiring harness to the chassis near its original location.



6. Tighten all 5/8-11 Gr5 fasteners with torque wrench to 150 Lb.-Ft. (203 N*m)

⚠ Proper torque is needed to keep the hitch secure to the vehicle when towing.



6. Tighten all M8 CL8.8 fasteners with torque wrench to 20 Lb.-Ft. (27 N*m)



7. Raise the spare tire into the original stowed position.

