



Installation Instructions

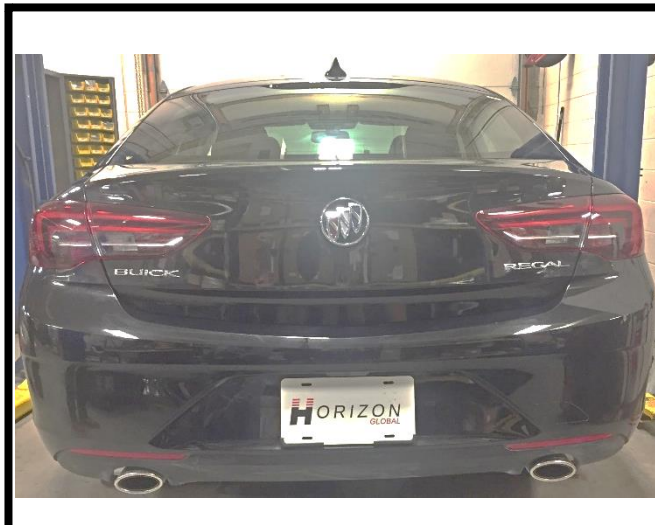
PART NUMBERS: 36652, 06189, CQT36652

Applications:

Years	Make	Models
2018-Current*	Buick	Regal Sportback
2017-Current*	Buick	LaCrosse
2016-Current*	Chevrolet	Malibu

Installation Time: **80 min**

The time listed above is the average time for professional installers. If you do not feel comfortable performing this installation on your own or are in need of assistance, please contact a professional installer.



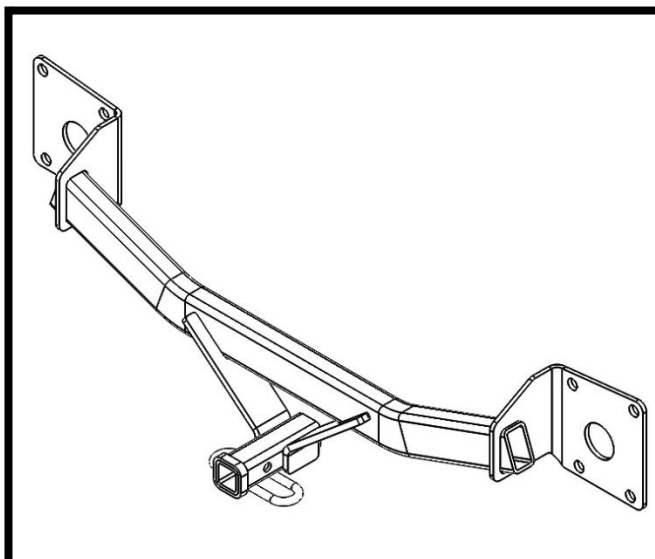
Representative Vehicle Photo

Equipment Required:

Safety Glasses	Ratchet	7 mm 10 mm 15 mm Sockets	6" Socket Extension	Star Driver T15
Torque Wrench	Panel Removal Tool	Plastic Trim Tools	Marker	Utility Knife

DO NOT EXCEED LOWER OF TOWING VEHICLE MANUFACTURER'S RATING OR:

Hitch Type	Max Gross Trailer Weight	Max Tongue Weight
Weight Carrying	3500 lb. (1589 kg)	350 lb. (159 kg)
Weight Distributing	N/A	N/A



Hitch Illustration



Always wear **SAFETY GLASSES** when installing hitch

Installation Instructions

PART NUMBERS: 36652, 06189, CQT36652

BUICK REGAL SPORTBACK

This hitch does not include any installation hardware. Existing fasteners on the vehicle are used for hitch attachment.

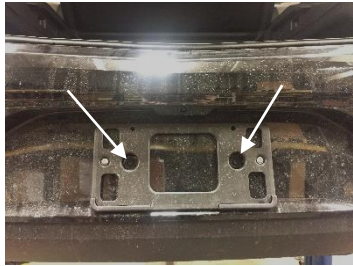


Figure 2

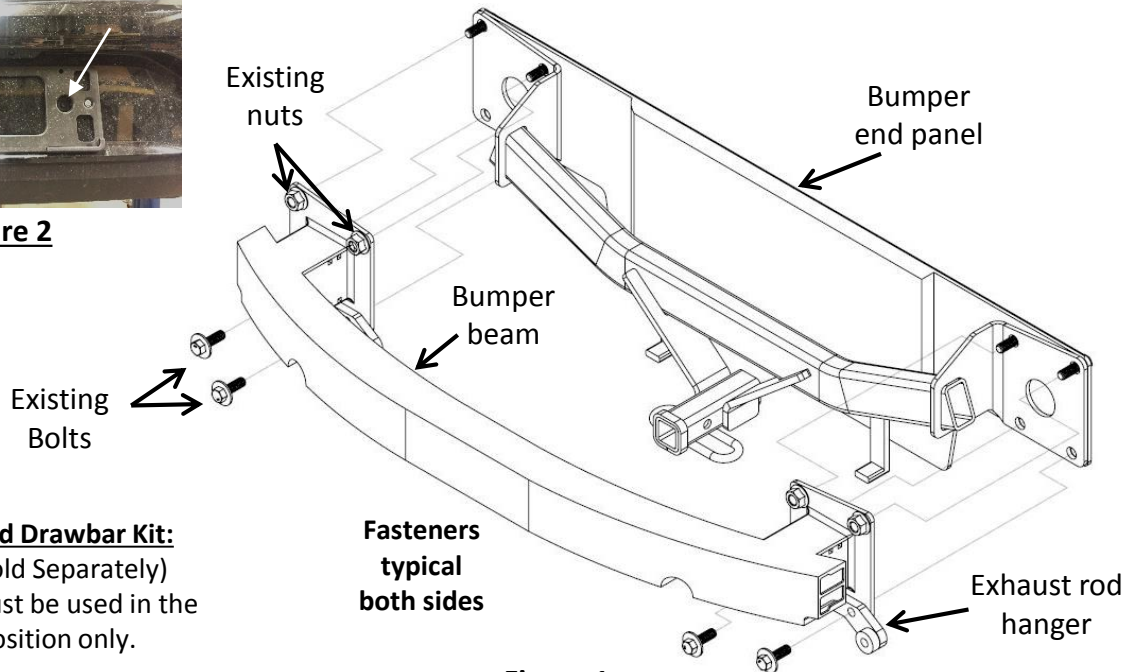


Figure 1

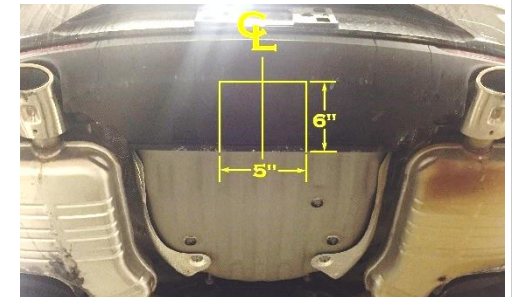


Figure 3

Authorized Drawbar Kit:
36071 (Sold Separately)
 Drawbar must be used in the **RISE** position only.

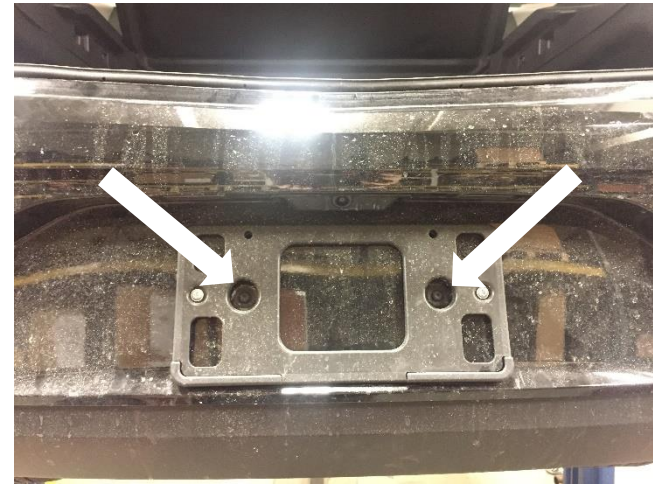
- 1. Bumper fascia removal** – Open the trunk. Use T15 driver to remove (5) screws from wheel well liner each side. Push the liner aside. Using a 7mm socket, remove the screw holding the fascia to the fender each side. Remove the license plate to remove (2) screws with a T15 driver see **Fig. 2**. Remove the taillights to reveal two fascia tabs. Remove the access panel inside the trunk, behind the taillight. Unscrew (2) plastic wingnuts, gently pull on taillight, straight rearward, unplug the taillight. Push down on the fascia tabs to release while gently pulling on the fascia. Using plastic trim tools, gently remove the plastic fascia starting at the outer edges near the wheel wells. Disconnect the wiring from fascia if equipped.
- 2. Bumper beam removal** – use 15mm socket to remove (2) flange nuts and (2) bolts from bumper beam each side, see **Figure 1**. Gently remove bumper beam and exhaust rod hangers. Use a support to keep exhaust system from getting damaged.
- 3. Hitch installation** – raise the hitch and align top 2 holes of the hitch to the studs on the bumper end panel. Raise the bumper beam and exhaust rod hangers to sandwich the hitch, see **Figure 1**. Reuse the flange nuts and bolts.
- 4. Tighten all fasteners with torque wrench to 53 Lb.-Ft. (72 N*M).** **Proper torque is needed to keep the hitch secure to the vehicle when towing.**
- 5. Bottom fascia trimming** – locate the center of bottom fascia and trim 6" deep by 5" wide area, see **Figure 3**. Make additional trimming if needed.
- 6. Reinstall all fasteners, wiring, and bumper fascia removed in Step 1.**

Note: check hitch frequently, making sure all fasteners and ball are properly tightened. If hitch is removed, plug all holes in trunk pan or other body panels to prevent entry of water and exhaust fumes. A hitch or ball which has been damaged should be removed and replaced. Observe safety precautions when working beneath a vehicle and wear eye protection. Do not cut access or attachment holes with a torch. This product complies with safety specifications and requirements for connecting devices and towing systems of the state of New York, V.E.S.C. Regulation V-5 and SAE J684.

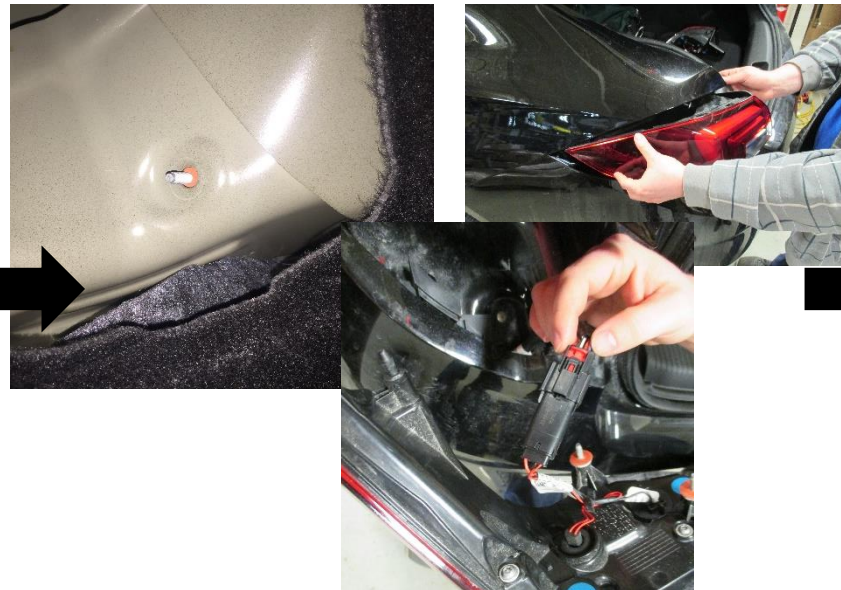
Bumper fascia removal – Open the trunk. Use T15 driver to remove (5) screws from wheel well liner each side. Push the wheel well liner aside and using a 7mm socket, remove the screw holding the fascia to the fender each side.



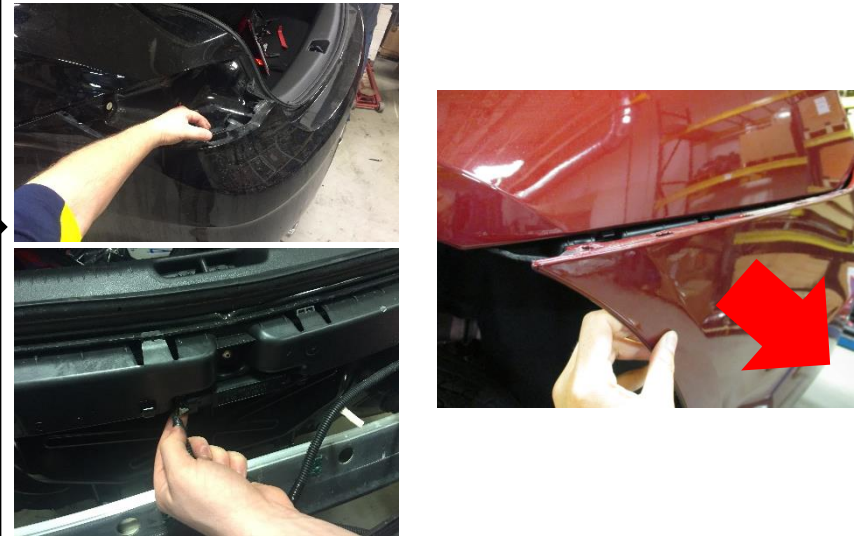
Remove the license plate to remove 2 screws with a T15 driver



Remove the taillights to reveal two fascia tabs. Remove the access panel inside the trunk, behind the taillight. Unscrew (2) plastic wingnuts, gently pull on taillight, straight rearward, unplug the taillight.



Push down on the fascia tabs to release while gently pulling on the fascia. Using plastic trim tools, gently remove the plastic fascia starting at the outer edges near the wheel wells. Disconnect the wiring from fascia if equipped.



Bumper beam removal – use 15mm socket to remove (2) flange nuts and (2) bolts from bumper beam each side, see **Figure 1**. Gently remove bumper beam and exhaust rod hangers. Use a support to keep exhaust system from getting damaged.

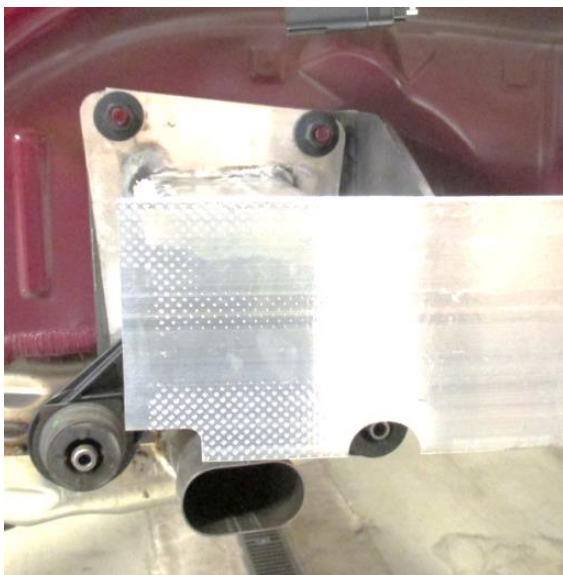


Hitch installation – raise the hitch and align top 2 holes of the hitch to the studs on the bumper end panel. Raise the bumper beam and exhaust rod hangers to sandwich the hitch, see **Figure 1**. Reuse the flange nuts and bolts.

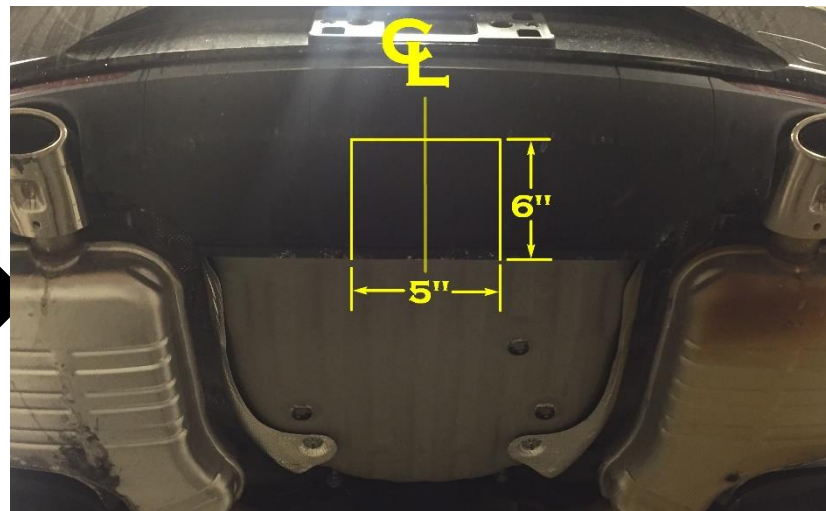


Tighten all fasteners with torque wrench to 53 Lb.-Ft. (72 N*M).

⚠ Proper torque is needed to keep the hitch secure to the vehicle when towing.



Bottom fascia trimming – locate the center of bottom fascia and trim 6" deep by 5" wide area. Make additional trimming if needed.



Reinstall all fasteners, wiring, and bumper fascia removed earlier.





Always wear SAFETY GLASSES when installing hitch

Installation Instructions

PART NUMBERS: 36652, 06189, CQT36652

Reuse all fasteners from bumper attachments

(Sold separately)

Drawbar Kit: 36071
Drawbar must be used in the **RISE** position only.

Buick LaCrosse



Figure 2



Fasteners typical both sides

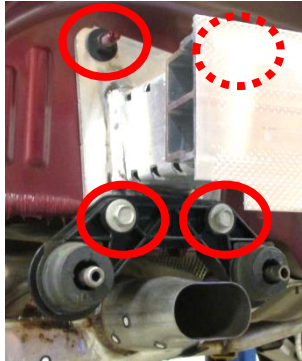


Figure 3

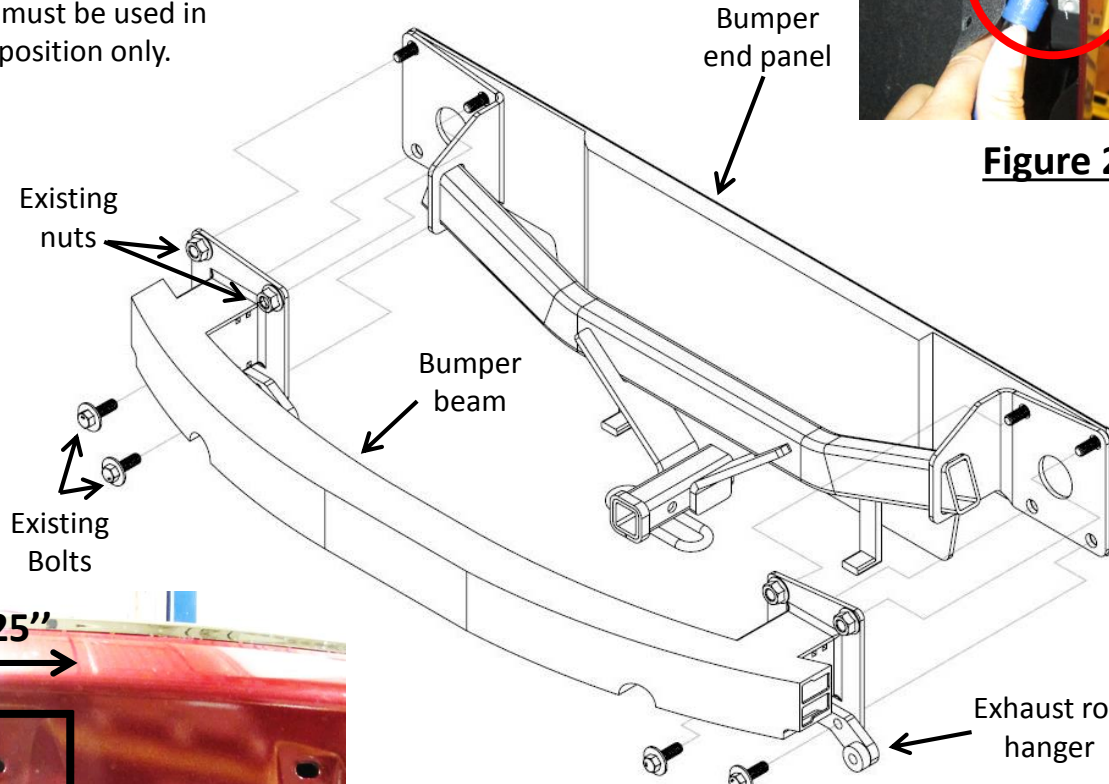


Figure 1

This hitch does not include any installation hardware. Existing fasteners on the vehicle are used for hitch attachment.

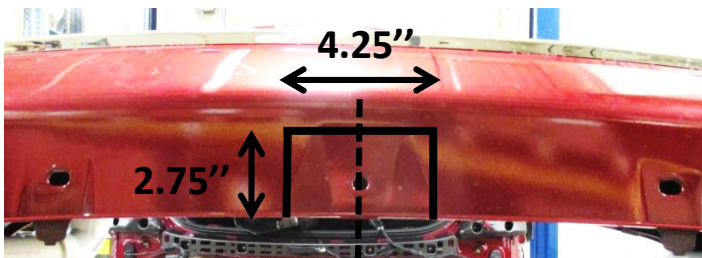


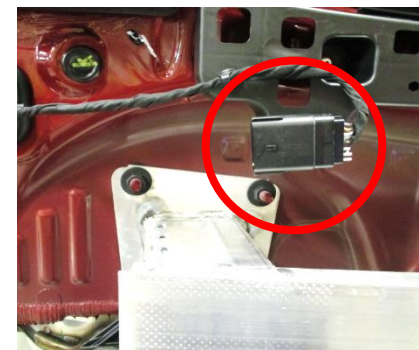
Figure 4

- Bumper fascia removal** – use panel removal tool to remove (3) plastic rivets from bottom fascia. Use T15 driver and 7mm socket to remove (5) screws from wheel well liner each side, see **Figure 2**. Open the trunk. Using plastic trim tools, gently remove the plastic fascia starting at the outer edges near the wheel wells. Disconnect the wiring from fascia if equipped.
- Bumper beam removal** – use 15mm socket to remove (2) flange nuts and (2) bolts from bumper beam each side, see **Figure 3**. Gently remove bumper beam and exhaust rod hanger. Use a support to keep muffler from getting damaged.
- Hitch installation** – raise the hitch and align top 2 holes of the hitch to the studs on the bumper end panel. Raise the bumper beam and exhaust rod hangers to sandwich the hitch, see **Figure 1**. Reuse the flange nuts and bolts to loosely fasten them.
- Tighten all fasteners with torque wrench to 53 Lb.-Ft. (72 N*M).**
- Bottom fascia trimming** – locate the center of bottom fascia and trim 2.75" deep by 4.25" wide area, see **Figure 4**. Make additional trimming if needed. **NOTE:** Rivet at bottom center fascia won't be able to reattach after fascia trimming.
- Reinstall all fasteners, wirings, and bumper fascia removed in Step 1, 2.

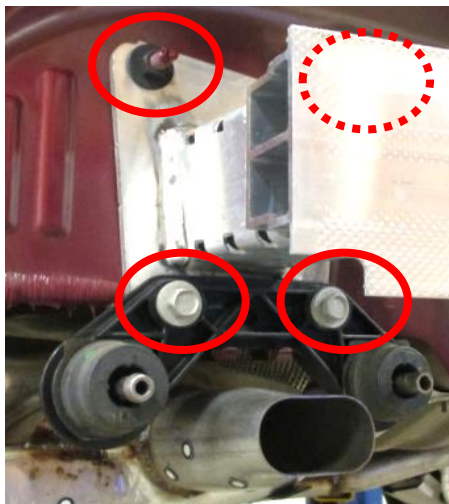
⚠ Proper torque is needed to keep the hitch secure to the vehicle when towing.

Note: check hitch frequently, making sure all fasteners and ball are properly tightened. If hitch is removed, plug all holes in trunk pan or other body panels to prevent entry of water and exhaust fumes. A hitch or ball which has been damaged should be removed and replaced. Observe safety precautions when working beneath a vehicle and wear eye protection. Do not cut access or attachment holes with a torch. This product complies with safety specifications and requirements for connecting devices and towing systems of the state of New York, V.E.S.C. Regulation V-5 and SAE J684.

1. Bumper fascia removal – use panel removal tool to remove (3) plastic rivets from bottom fascia. Use T15 driver and 7mm socket to remove (5) screws from wheel well liner each side, see **Figure 2**. Open the trunk. Using plastic trim tools, gently remove the plastic fascia starting at the outer edges near the wheel wells. Disconnect the wiring from fascia if equipped.

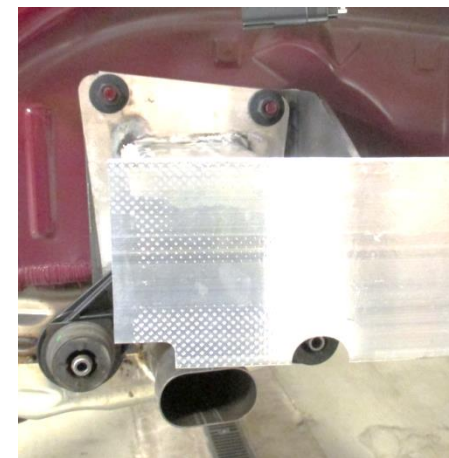


2. Bumper beam removal – use 15mm socket to remove (2) flange nuts and (2) bolts from bumper beam each side, see **Figure 3**. Gently remove bumper beam and exhaust rod hanger. Use a support to keep muffler from getting damaged.



3. Hitch installation – raise the hitch and align top 2 holes of the hitch to the studs on the bumper end panel. Raise the bumper beam and exhaust rod hangers to sandwich the hitch, see **Figure 1**. Reuse the flange nuts and bolts to loosely fasten them.
4. Tighten all fasteners with torque wrench to 53 Lb.-Ft. (72 N*M).

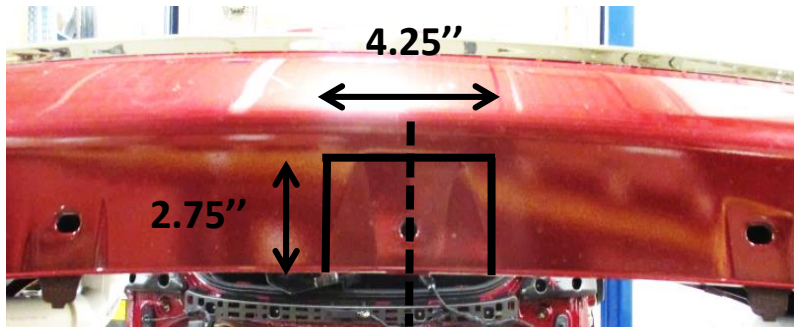
⚠ Proper torque is needed to keep the hitch secure to the vehicle when towing.



5. Bottom fascia trimming – locate the center of bottom fascia and trim 2.75" deep by 4.25" wide area, see **Figure 4**. Make additional trimming if needed.

NOTE: Rivet at bottom center fascia won't be able to reattach after fascia trimming.

6. Reinstall all fasteners, wirings, and bumper fascia removed in Step 1, 2.



Always wear SAFETY GLASSES when installing hitch

Installation Instructions

PART NUMBERS: 36652, 06189, CQT36652

Chevrolet Malibu (Sold separately)

Drawbar Kit: 36071

Drawbar must be used in the **RISE** position.



Figure 2b

Reuse all fasteners from bumper attachments

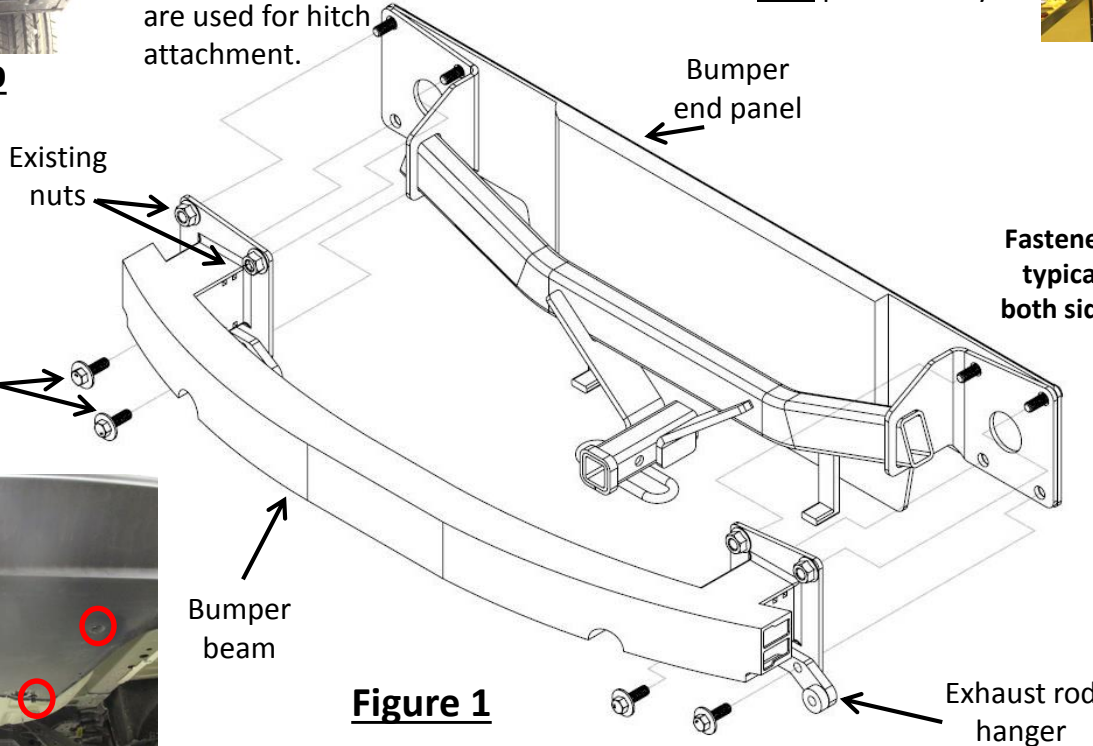


Figure 1



Figure 2a

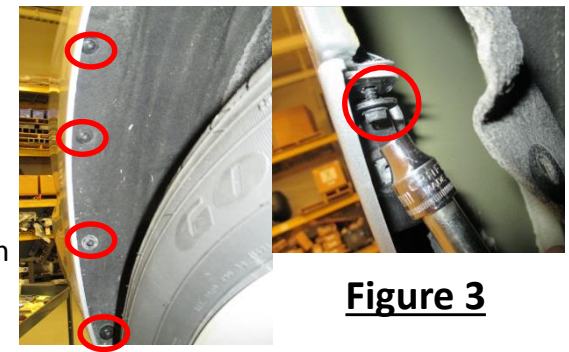


Figure 3

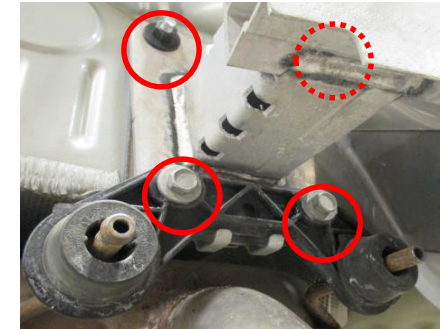


Figure 4

Fasteners typical both sides

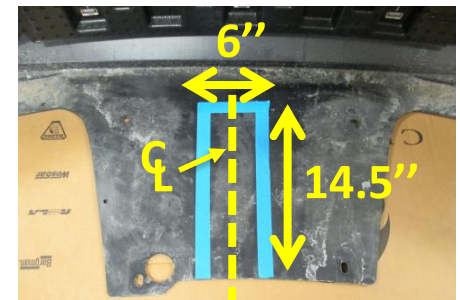


Figure 5

- Fascia removal** – use flat head screwdriver and 10mm socket to remove (2) rivets and (2) plastic caps from bottom fascia, see **Figure 2a**. Use T15 driver and 7mm socket to remove (5) screws from wheel well each side, see **Figure 3**. Open the trunk and gently remove the fascia. Carefully set the bumper fascia aside. **NOTE:** some 17' model might have an extra bottom appearance panel on passenger side, see **Figure 2b**. Remove it and keep for reinstallation.
- Bumper beam removal** – use 15mm socket to remove (2) flange nuts and (2) bolts from bumper plate each side, see **Figure 4**. Gently remove bumper beam and exhaust rod hanger. Use a support to keep muffler from getting damaged.
- Hitch installation** – raise the hitch and align top 2 holes on the hitch to the studs on the end panel. Raise the bumper beam and exhaust rod hangers to sandwich the hitch, see **Figure 1**. Reuse the flange nuts and bolts to loosely fasten them.
- Tighten all fasteners with torque wrench to 53 Lb.-Ft. (72 N*M).**
- Bottom fascia trimming** – locate the center of bottom panel and trim 14.5" tall by 6" wide area, see **Figure 5**. Make additional trimming if needed.
- Reinstall all fasteners, fascia, and bottom appearance panel removed in Step 1, 2.

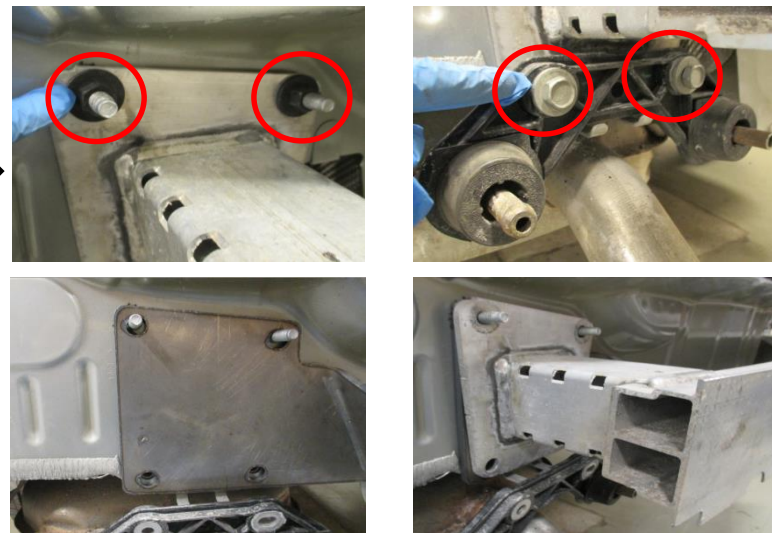
Proper torque is needed to keep the hitch secure to the vehicle when towing.

Note: check hitch frequently, making sure all fasteners and ball are properly tightened. If hitch is removed, plug all holes in trunk pan or other body panels to prevent entry of water and exhaust fumes. A hitch or ball which has been damaged should be removed and replaced. Observe safety precautions when working beneath a vehicle and wear eye protection. Do not cut access or attachment holes with a torch. This product complies with safety specifications and requirements for connecting devices and towing systems of the state of New York, V.E.S.C. Regulation V-5 and SAE J684.

1. Fascia removal – use flat head screwdriver and 10mm socket to remove (2) rivets and (2) plastic caps from bottom fascia, see Figure 2. Use T15 driver and 7mm socket to remove (5) screws from wheel well each side, see Figure 3. Open the trunk and gently remove the fascia. Carefully set the bumper fascia aside. **NOTE:** some 17' model might have an extra bottom appearance panel on passenger side, see **Figure 2b**. Remove it and keep for reinstallation.



2. Bumper beam removal – use 16mm socket to remove (2) flange nuts and (2) bolts from bumper plate each side, see Figure 4. Gently remove bumper beam and exhaust rod hanger. Use a support to keep muffler from getting damaged.

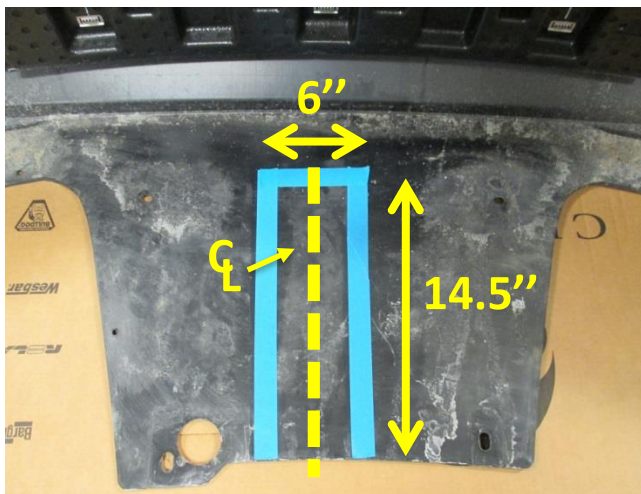


3. Hitch installation – raise the hitch and align top 2 holes on the hitch to the studs on the end panel. Raise the bumper beam and exhaust rod hangers to sandwich the hitch, see Figure 1. Reuse the flange nuts and bolts to loosely fasten them.

4. Tighten all fasteners with torque wrench to 53 Lb.-Ft. (72 N*M).

⚠ Proper torque is needed to keep the hitch secure to the vehicle when towing.

5. Bottom fascia trimming – locate the center of bottom panel and trim 14.5" tall by 6" wide area, see Figure 5. Make additional trimming if needed.



6. Reinstall all fasteners, fascia, and bottom appearance panel removed in Step 1, 2.

