



Installation Instructions

PART NUMBERS: 36114, 06193, CQT36114

WARNING

To prevent **SERIOUS INJURY, DEATH** or **PROPERTY DAMAGE**:

- **ALWAYS** read, understand and follow warnings and instructions for your hitch **BEFORE** installation. Keep for future reference.
- **DO NOT** cut, weld or modify this receiver.
- **CHECK** all fasteners are tight and your hitch is securely mounted to your vehicle periodically.
- **ALWAYS** read, understand and follow all warnings and instructions for your vehicle and for other accessories you will use with your hitch **BEFORE** use.
- **LOAD** the trailer heavier in front.
- **DO NOT** exceed lower of towing vehicle manufacturer's rating or:

Hitch Type	Max Gross Trailer Weight	Max Tongue Weight
Weight Carrying	3500 lb. (1589 kg)	350 lb. (159 kg)
Weight Distributing	n/a	n/a

- **ALWAYS** wear your seatbelt.
- **SLOW DOWN** when towing, **NEVER** exceed any posted speed limit.
- If **EXCESS SWAY** occurs, take your foot off the gas pedal and hold the steering wheel as steady as possible. **DO NOT** apply your brakes and **DO NOT** speed up.

Installation Instructions

PART NUMBERS: 36114, 06193, CQT36114

Applications:

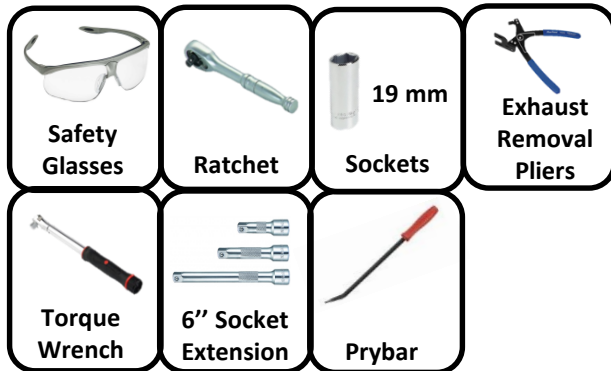
Years	Make	Models
2019-Current*	Acura	RDX

*Visit our website for the most up to date information regarding application years and trim levels.

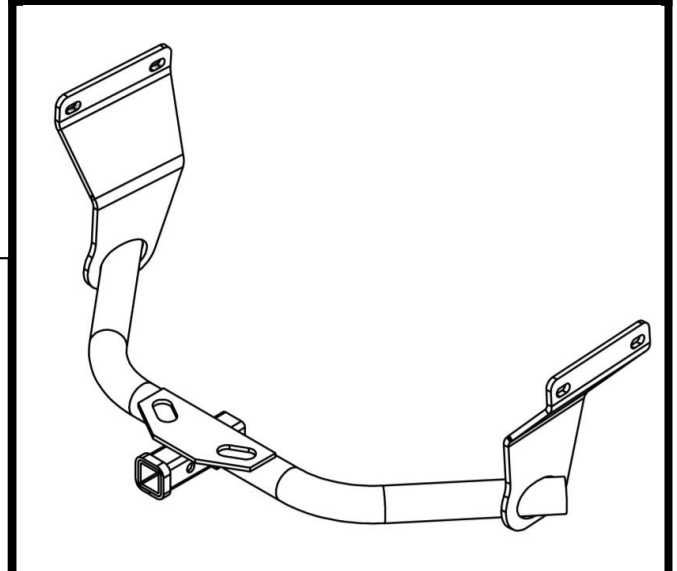
Installation Time: **30 min**

The time listed above is the average time for professional installers. If you do not feel comfortable performing this installation on your own or are in need of assistance, please contact a professional installer.

Equipment Required:



Representative Vehicle Photo



Hitch Illustration

**DO NOT EXCEED LOWER OF TOWING VEHICLE
MANUFACTURER'S RATING OR:**



Hitch Type	Max Gross Trailer Weight	Max Tongue Weight
Weight Carrying	3500 lb. (1589 kg)	350 lb. (159 kg)
Weight Distributing	n/a	n/a

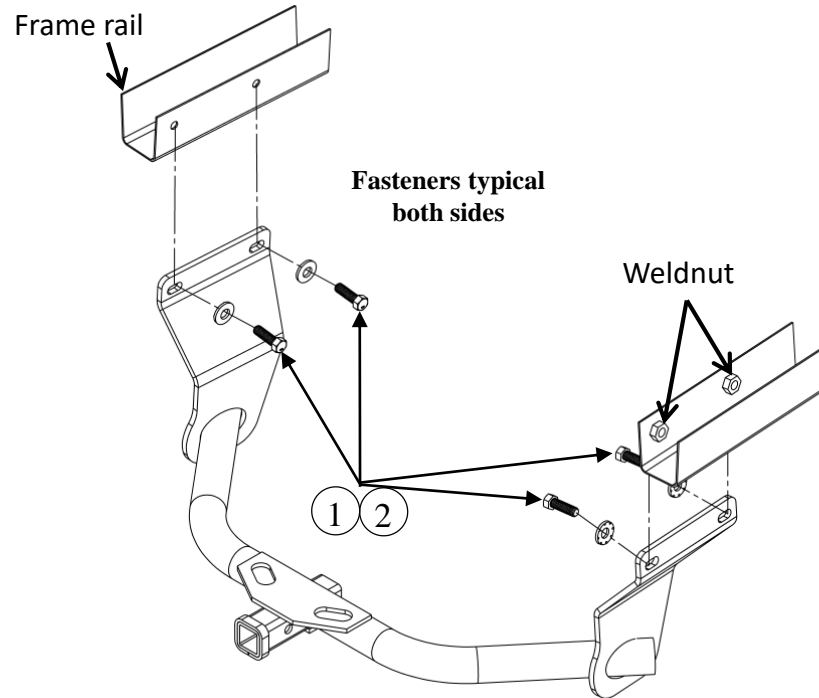
**Always wear SAFETY GLASSES
when installing hitch**

Installation Instructions

PART NUMBERS: 36114, 06193, CQT36114

Fastener Kit: 36114F

①	Qty. (4)	Hex Bolt M12 x 1.25 x 40mm Cl10.9	
②	Qty. (4)	Conical Washer 1/2" Part No. 01292008	



**Authorized Drawbar Kit:
36051 (Sold Separately)**
Drawbar must be used in the
RISE position only.



Figure 1

- 1. Lower spare tire** – Locate the lowering tools and mechanism (consult vehicle owner's manual) and lower the spare tire and set aside.
- 2. Lower exhaust** – Using exhaust removal pliers or prybar remove the rubber exhaust hangers from in front of the muffler and behind the muffler. Be sure to support the exhaust to prevent damage.
- 3. Install hitch** – Make sure the weldnuts are clear from rust and debris. Raise the hitch into position aligning the attachment holes to the rearmost weldnuts in the side of the frame rail. Install the supplied bolts and conical washers (teeth side toward hitch) into the weldnuts on each side.
- 4. Torque fasteners** - **Tighten all M12 fasteners with torque wrench to 42Lb.-Ft. (57 N*M)**



Proper torque is needed to keep the hitch secure to the vehicle when towing.

- 5. Reinstall exhaust and spare tire** – Raise the exhaust back onto position and reinstall all hangers that were removed in step 2. Reinstall the spare tire.

Note: check hitch frequently, making sure all fasteners and ball are properly tightened. If hitch is removed, plug all holes in trunk pan or other body panels to prevent entry of water and exhaust fumes. A hitch or ball which has been damaged should be removed and replaced. Observe safety precautions when working beneath a vehicle and wear eye protection. Do not cut access or attachment holes with a torch.

This product complies with safety specifications and requirements for connecting devices and towing systems of the state of New York, V.E.S.C. Regulation V-5 and SAE J684.

1. Lower spare tire – Locate the lowering tools and mechanism (consult vehicle owner's manual) and lower the spare tire and set aside.



2. Lower exhaust – Using exhaust removal pliers or prybar remove the rubber exhaust hangers from in front of the muffler and behind the muffler. Be sure to support the exhaust to prevent damage.



3. Install hitch – Make sure the weldnuts are clear from rust and debris. Raise the hitch into position aligning the attachment holes to the rearmost weldnuts in the side of the frame rail. Install the supplied bolts and conical washers (teeth side toward hitch) into the weldnuts on each side.



4. Torque fasteners - Tighten all M12 fasteners with torque wrench to 42lb.-Ft. (57 N*M)

⚠ Proper torque is needed to keep the hitch secure to the vehicle when towing.



5. Reinstall exhaust and spare tire – Raise the exhaust back onto position and reinstall all hangers that were removed in step 2. Reinstall the spare tire.

