

WARNING

To prevent **SERIOUS INJURY, DEATH or PROPERTY DAMAGE:**

- **ALWAYS** read, understand and follow warnings and instructions for your hitch **BEFORE** installation. Keep for future reference.
- **DO NOT** cut, weld or modify this receiver.
- **CHECK** all fasteners are tight and your hitch is securely mounted to your vehicle periodically.
- **ALWAYS** read, understand and follow all warnings and instructions for your vehicle and for other accessories you will use with your hitch **BEFORE** use.
- **LOAD** the trailer heavier in front.
- **DO NOT** exceed lower of towing vehicle manufacturer's rating or:

| Hitch Type | Max Gross Trailer Weight | Max Tongue Weight |
|---------------------|--------------------------|-------------------|
| Weight Carrying | 2000 lb. (907 kg) | 200 lb. (91 kg) |
| Weight Distributing | N/A | N/A |

- **ALWAYS** wear your seatbelt.
- **SLOW DOWN** when towing, **NEVER** exceed any posted speed limit.
- If **EXCESS SWAY** occurs, take your foot off the gas pedal and hold the steering wheel as steady as possible. **DO NOT** apply your brakes and **DO NOT** speed up.

Installation Instructions

PART NUMBERS: 25005, 78298, CQT25005

Applications:

| Years | Make | Models |
|---------------|-------|---------|
| 2017-Current* | Tesla | Model 3 |

*Visit our website for the most up to date information regarding application years and trim levels.

Installation Time: 120 mins

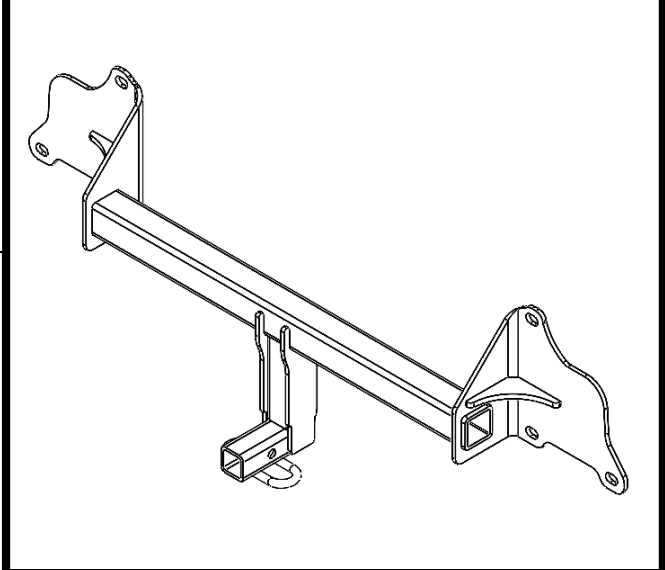
The time listed above is the average time for professional installers. If you do not feel comfortable performing this installation on your own or are in need of assistance, please contact a professional installer.



Representative Vehicle Photo

Equipment Required:

| | | | |
|--------------------------|-----------------------|--------------------------------|------------------------|
| Safety Glasses | Ratchet | 8mm 10mm 15mm Sockets | 6" Socket Extension |
| Flat Head Screwdriver | Plastic Trim Tools | Torque Wrench | Star Drivers T25 |



Hitch Illustration

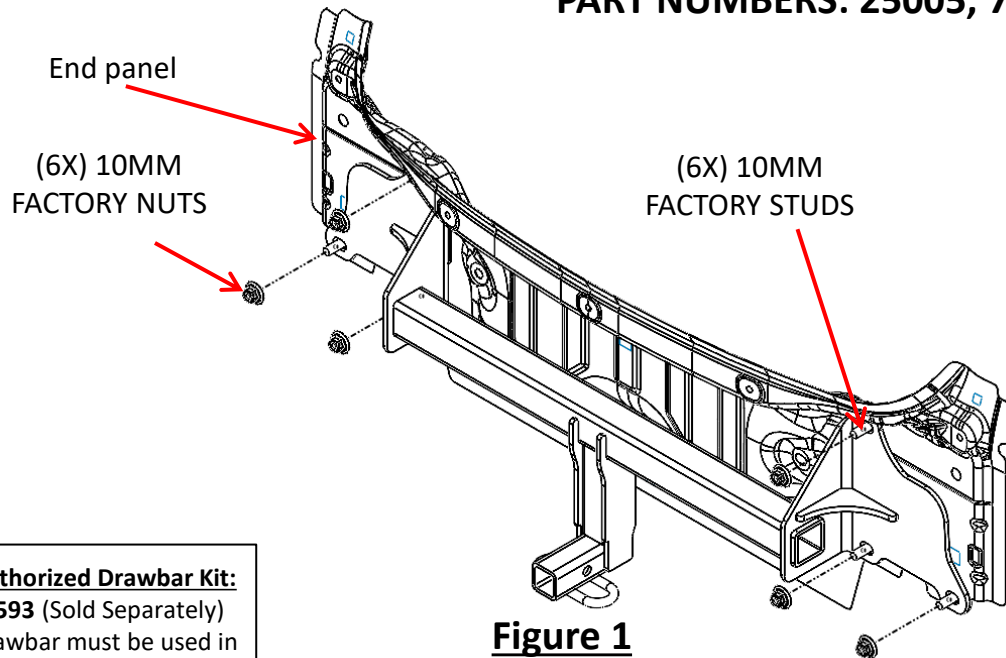
**DO NOT EXCEED LOWER OF TOWING VEHICLE
MANUFACTURER'S RATING OR:**

| Hitch Type | Max Gross Trailer Weight | Max Tongue Weight |
|---------------------|--------------------------|-------------------|
| Weight Carrying | 2000 lb. (907 kg) | 200 lb. (91 kg) |
| Weight Distributing | N/A | N/A |

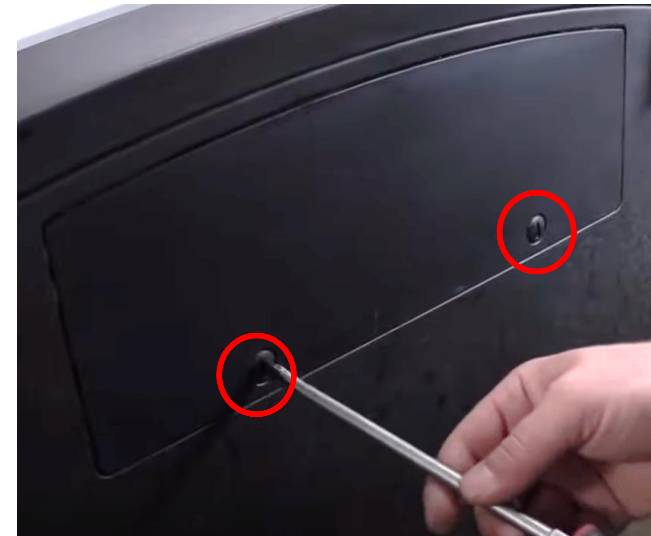
Always wear SAFETY GLASSES when installing hitch

Installation Instructions

PART NUMBERS: 25005, 78298, CQT25005



Authorized Drawbar Kit:
3593 (Sold Separately)
Drawbar must be used in the **RISE** position only.



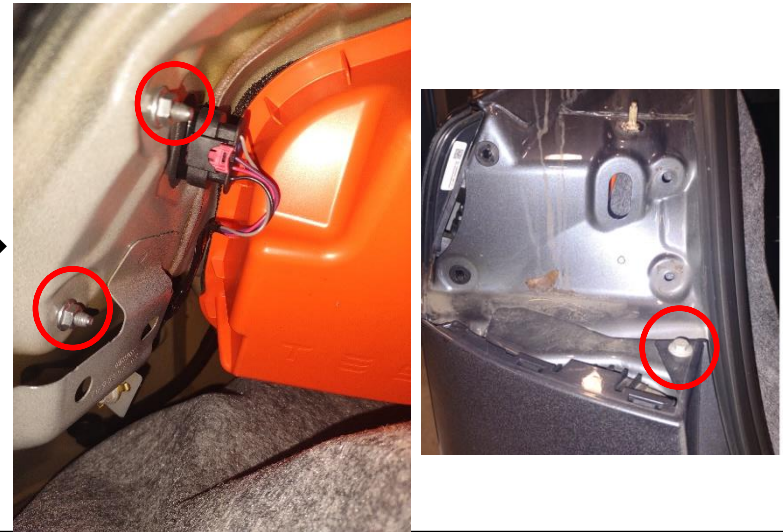
Note: If vehicle's rear fascia does not come with a bottom panel door as shown in Figure 2, please consider obtaining one from dealership.

- 1. Remove trunk side panels** - Inside the trunk, use plastic trim tools to open up driver side panels to gain access to taillight. Repeat step for passenger side. By hand, remove (2) plastic trunk stops on top of the taillights by turning counterclockwise.
- 2. Remove taillights** - Inside the trunk, unplug the wiring harnesses from the taillight behind driver side panel. Using 8mm socket remove (2) nuts securing the taillight to the vehicle of the trunk and remove. Gently remove taillight and set aside. Use a 10mm socket to remove (1) screw after removing taillight. Repeat steps for passenger side.
- 3. Loosen wheel well liner** - Using a flathead screwdriver and T25 bit separate the driver side wheel well liner from the rear fascia by removing (3) plastic rivets and (1) torx screw inside the rear wheel fender. Repeat steps for passenger side.
- 4. Partially loosen rear underbody appearance panel** - Disconnect the bottom of the fascia and appearance panel from the vehicle body. Use a flathead screwdriver to dislodge (2) plastic covers. Next, remove (7) screws from the appearance panel. On some models an 8th screw is present. Pull down the rear appearance panel to gain access to this screw.
- 5. Remove rear bumper fascia** - Use plastic trim tools to remove the fascia starting at the outer edges near the wheel wells and gently pull the fascia. Carefully set the fascia aside for reinstallation. Disconnect any wiring harness if present.
- 6. Partially remove sensor** - Using 10mm socket remove (5) screws from sensor on top of impact bar. Let the sensor hang down to gain access to impact bar base plates. Save screws for later reinstallation.
- 7. Remove impact bar** - Using 15mm socket remove the nuts securing the impact bar. Depending on your vehicle model there may be six or eight nuts. Save the nuts for the hitch installation. Remove impact bar and return to owner.
- 8. Install hitch** - Raise hitch into position. Loosely tighten factory nuts to hitch, **see Figure 1**.
- 9. Tighten all 10mm fasteners with torque wrench to 38 Lb.-Ft. (52 N*M).** **⚠ Proper torque is needed to keep the hitch secure to the vehicle when towing.**
- 10. Remove bottom panel** - Use flathead screwdriver to remove (2) screws to gain access then remove plastic panel, **see Figure 2**.
- 11. Reinstall the fascia, plastic sensor piece, wiring harness, underbody appearance panel, fasteners, wheel liners and taillights removed in Step 1-6.**

1. Remove trunk side panels - Inside the trunk, use plastic trim tools to open up driver side panels to gain access to taillight. Repeat step for passenger side. By hand, remove (2) plastic trunk stops on top of the taillights by turning counterclockwise.



2. Remove taillights – Inside the trunk, unplug the wiring harnesses from the taillight behind driver side panel. Using 8mm socket remove (2) nuts securing the taillight to the vehicle of the trunk and remove. Gently remove taillight and set aside. Use a 10mm socket to remove (1) screw after removing taillight. Repeat steps for passenger side.



3. Loosen wheel well liner – Using a flathead screwdriver and T25 bit separate the driver side wheel well liner from the rear fascia by removing (3) plastic rivets and (1) torx screw inside the rear wheel fender. Repeat steps for passenger side.



4. Partially loosen rear underbody appearance panel - Disconnect the bottom of the fascia and appearance panel from the vehicle body. Use a flathead screwdriver to dislodge (2) plastic covers. Next, remove (7) screws from the appearance panel. On some models an 8th screw is present. Pull down the rear appearance panel to gain access to this screw.

USE A FLATHEAD SCREWDRIVER TO DISLODGE (2) PLASTIC COVERS



USE 10mm SOCKET TO REMOVE (7) SCREWS

USE A 10mm SOCKET TO REMOVE (1) SCREW

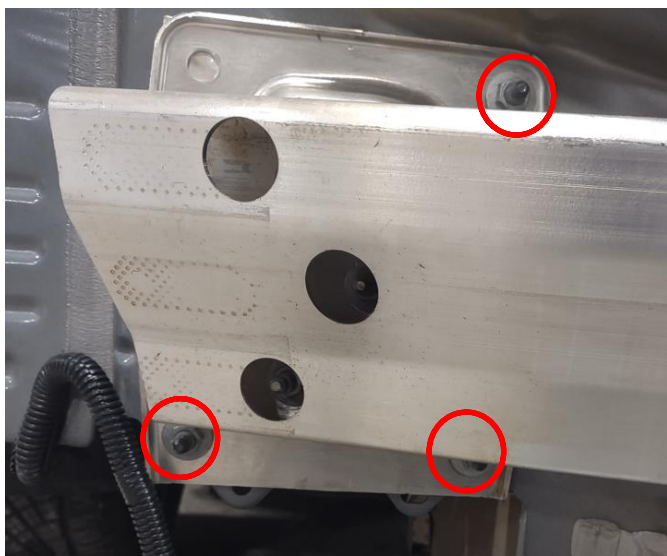
5. Remove rear bumper fascia - Use plastic trim tools to remove the fascia starting at the outer edges near the wheel wells and gently pull the fascia. Carefully set the fascia aside for reinstallation. Disconnect any wiring harness if present.



6. Partially remove sensor – Using 10mm socket remove (5) screws from sensor on top of impact bar. Let the sensor hang down to gain access to impact bar base plates. Save screws for later reinstallation.



7. Remove impact bar – Using 15mm socket remove the nuts securing the impact bar. Depending on your vehicle model there may be six or eight nuts. Save the nuts for the hitch installation. Remove impact bar and return to owner.

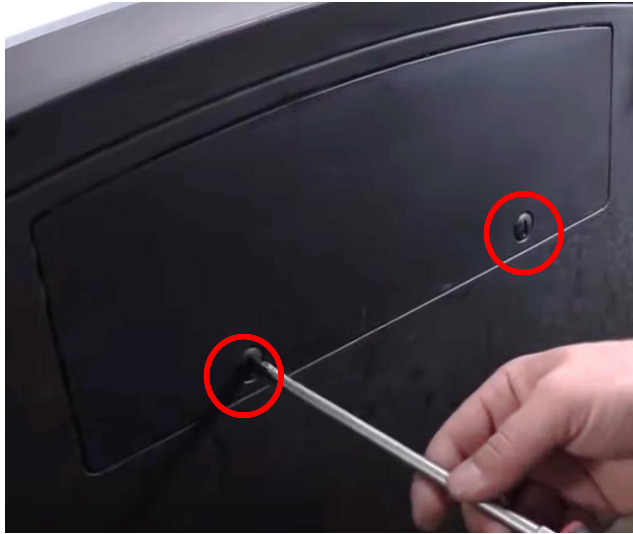


8. Install hitch – Raise hitch into position. Loosely tighten factory nuts to hitch, see Figure 1.

9. Tighten all 10mm fasteners with torque wrench to 38 Lb.-Ft. (52 N*M).



10. Remove bottom panel - Use flathead screwdriver to remove (2) screws to gain access then remove plastic panel, see Figure 2.



11. Reinstall the fascia, plastic sensor piece, wiring harness, underbody appearance panel, fasteners, wheel liners and taillights removed in Step 1-6.

