

Installation Instructions

PART NUMBERS: 25004, 78297, CQT25004

⚠ WARNING

To prevent **SERIOUS INJURY, DEATH or PROPERTY DAMAGE:**

- **ALWAYS** read, understand and follow warnings and instructions for your hitch **BEFORE** installation. Keep for future reference.
- **DO NOT** cut, weld or modify this receiver.
- **CHECK** all fasteners are tight and your hitch is securely mounted to your vehicle periodically.
- **ALWAYS** read, understand and follow all warnings and instructions for your vehicle and for other accessories you will use with your hitch **BEFORE** use.
- **LOAD** the trailer heavier in front.
- **DO NOT** exceed lower of towing vehicle manufacturer's rating or:

Hitch Type	Max Gross Trailer Weight	Max Tongue Weight
Weight Carrying	2000 lb. (907 kg)	200 lb. (91 kg)
Weight Distributing	N/A	N/A

- **ALWAYS** wear your seatbelt.
- **SLOW DOWN** when towing, **NEVER** exceed any posted speed limit.
- If **EXCESS SWAY** occurs, take your foot off the gas pedal and hold the steering wheel as steady as possible. **DO NOT** apply your brakes and **DO NOT** speed up.

Installation Instructions

PART NUMBERS: 25004, 78297, CQT25004

Applications:

Years	Make	Models
2021-Current*	Kia	RIO 5

*Visit our website for the most up to date information regarding application years and trim levels.

Installation Time: **75 mins**

The time listed above is the average time for professional installers. If you do not feel comfortable performing this installation on your own or are in need of assistance, please contact a professional installer.



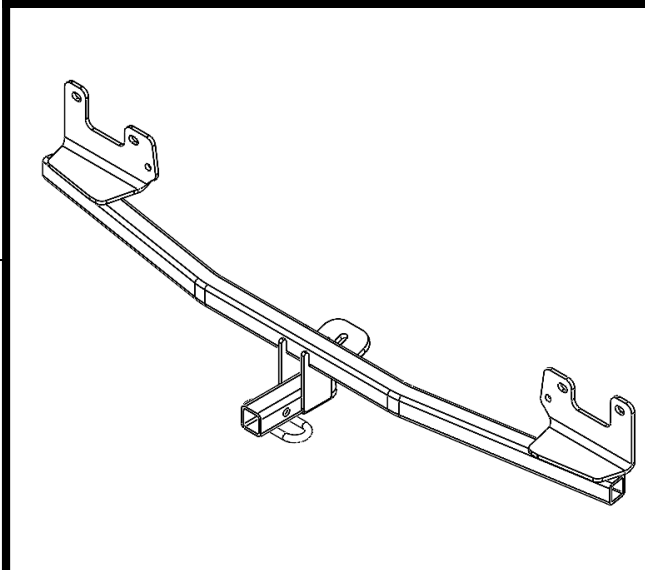
Representative Vehicle Photo

Equipment Required:

Safety Glasses	Ratchet	13mm 11/16 " 3/4 " Sockets	6" Socket Extension	Flat Head Screwdriver	Tape Measure
Marker	Plastic Trim Tools	Torque Wrench	Phillips Screwdriver	Die Grinder	Tape

DO NOT EXCEED LOWER OF TOWING VEHICLE MANUFACTURER'S RATING OR:

Hitch Type	Max Gross Trailer Weight	Max Tongue Weight
Weight Carrying	2000 lb. (907 kg)	200 lb. (91 kg)
Weight Distributing	N/A	N/A



Hitch Illustration

Always wear SAFETY GLASSES when installing hitch

Installation Instructions

PART NUMBERS: 25004, 78297, CQT25004

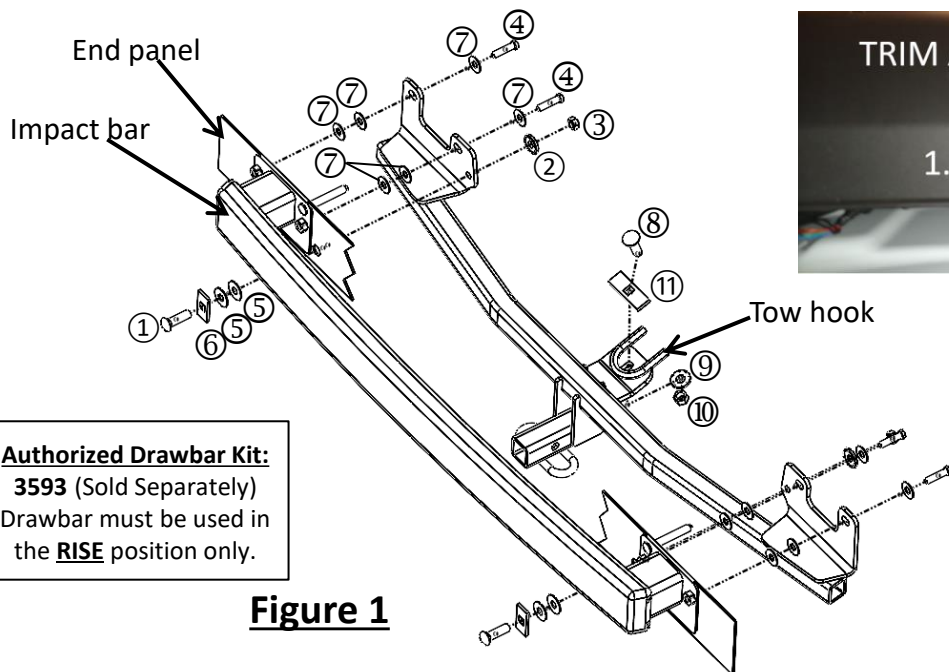


Figure 1

Authorized Drawbar Kit: 3593 (Sold Separately)
Drawbar must be used in the **RISE** position only.

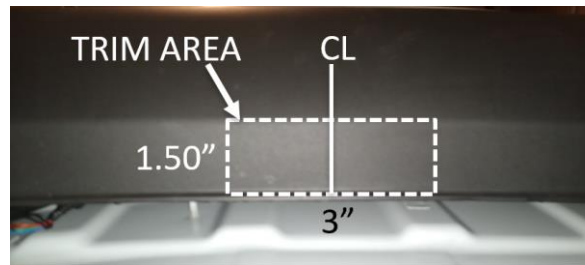


Figure 2

Fasteners typical on both sides



Conical washer teeth side against hitch

Fastener Kit: 25004F

①	Qty. (2)	Carriage Bolt 7/16"-13x1 3/4" GR5	
②	Qty. (6)	Conical washer 7/16"	
③	Qty. (2)	Hex nut 7/16", GR2	
④	Qty. (4)	Bolt M8 1.25 x 40mm CL 10.9	
⑤	Qty. (4)	Washer 7/16" heavy	
⑥	Qty. (2)	Spacer 3/16" x 1" x 2"	
⑦	Qty. (12)	Washer 7/16"	
⑧	Qty. (1)	Carriage Bolt 1/2"-13x1 3/4" GR5	
⑨	Qty. (1)	Conical washer 1/2"	
⑩	Qty. (1)	Hex nut 1/2"-13, GR5	
⑪	Qty. (1)	Spacer 1/4" x 1" x 3"	

- Remove plastic trim piece** – Use flathead screwdriver to remove (3) push rivets from plastic trim piece located under fascia driver's side. Use phillips screwdriver to loosen (1) christmas tree screw from plastic trim piece. Remove and return to owner.
- Remove taillights** – Use phillips screwdriver to remove (2) screws from driver side taillight. Use plastic trim tools to gently disconnect the taillight from the vehicle and set aside. Repeat this process for passenger side.
- Remove hardware from fascia** - **a)** Use flathead screwdriver to remove (2) push rivets connecting fascia and impact bar. **b)** Use flathead screwdriver to remove (2) push rivets from bottom passenger side of fascia. Repeat for driver side. **c)** Use phillips screwdriver to remove (1) screw under driver side taillight and flathead screwdriver to remove (1) push rivet. Repeat for passenger side.
- Loosen wheel well liner** – Use phillips screwdriver to remove (4) screws from wheel well liner on driver side. Repeat this process for passenger side
- Remove fascia** - Use plastic trim tools to remove the fascia starting at the outer edges near the wheel wells and gently pull the fascia. Carefully set the fascia aside for reinstallation. Disconnect any sensors if present.
- Remove end panel/impact bar hardware** – Using 13mm socket remove (4) 8mm screws from impact bar/end panel. Return to owner.
- Install hitch** – Raise hitch into position. Fasten 8mm and 7/16 hardware to brackets and then 1/2 hardware to tow hook (loosely tighten) **see Figure 1**. NOTE: Tape washes to bracket for easier installation.
- Tighten all 8mm fasteners with torque wrench to 20 Lb.-Ft. (27 N*M). Tighten all 7/16-14 Gr5 fasteners with torque wrench to 50 Lb.-Ft. (68 N*M). Tighten all 1/2-13 Gr5 fasteners with torque wrench to 75 Lb.-Ft. (102 N*M).**
- Trim fascia** – Locate the center of fascia. Using tape measure, marker, and die grinder, to cut a 1.50"x 3" notch in the bottom of fascia. **See Figure 2**. Note: Be sure area is clear of all electrical wiring before trimming.
- Reinstall the fascia, wiring harness, fasteners, wheel liners and taillights removed in Step 2-5.

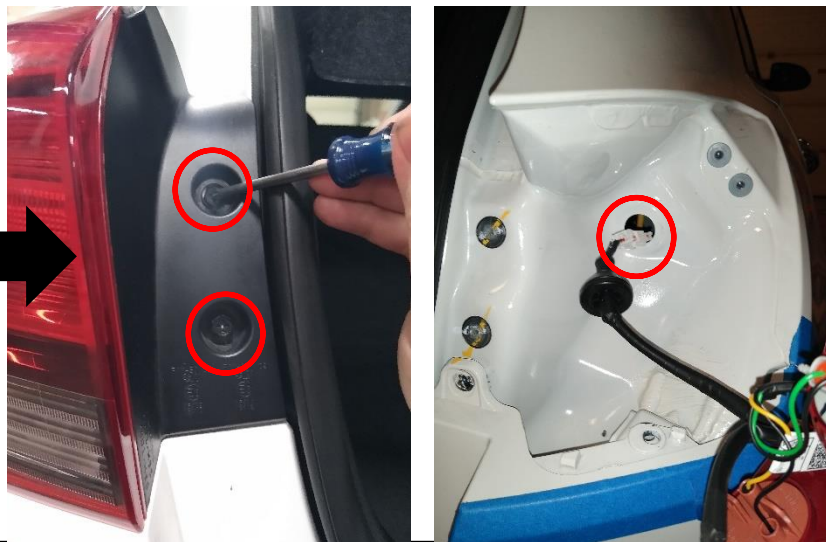
Proper torque is needed to keep the hitch secure to the vehicle when towing.

Note: check hitch frequently, making sure all fasteners and ball are properly tightened. If hitch is removed, plug all holes in trunk pan or other body panels to prevent entry of water and exhaust fumes. A hitch or ball which has been damaged should be removed and replaced. Observe safety precautions when working beneath a vehicle and wear eye protection. Do not cut access or attachment holes with a torch. This product complies with safety specifications and requirements for connecting devices and towing systems of the state of New York, V.E.S.C. Regulation V-5 and SAE J684.

1. Remove plastic trim piece – Use flathead screwdriver to remove (3) push rivets from plastic trim piece located under fascia. Use phillips screwdriver to loosen (1) christmas tree screw from plastic trim piece. Remove and return to owner.



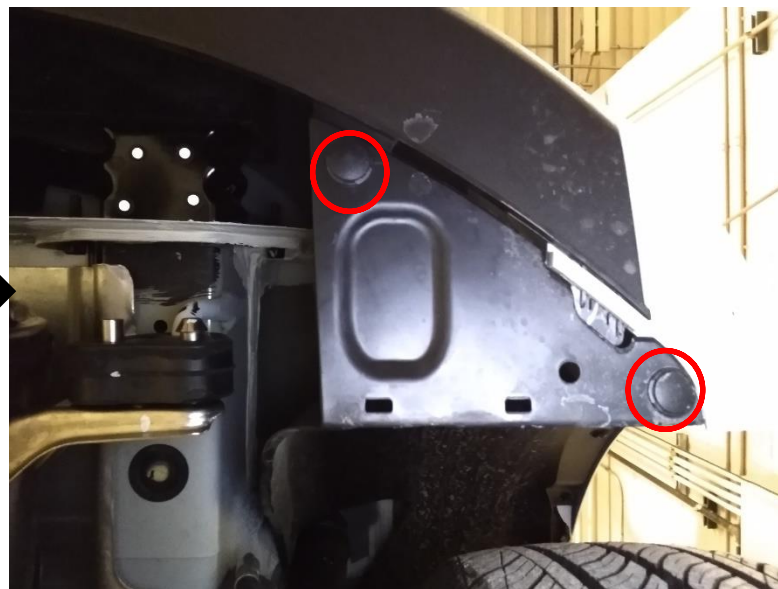
2. Remove taillights – Use phillips screwdriver to remove (2) screws from driver side taillight. Use plastic trim tools to gently disconnect the taillight from the vehicle and set aside. Repeat this process for passenger side.



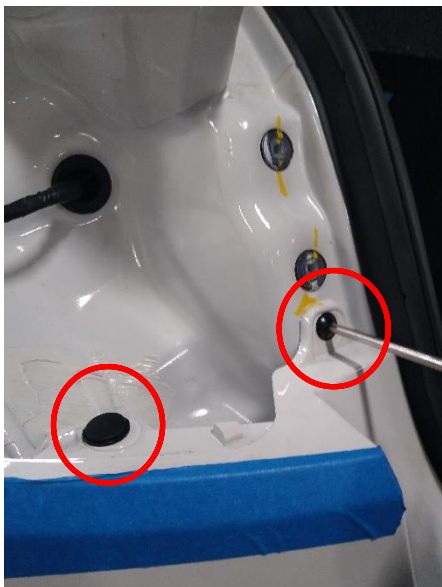
3. Remove hardware from fascia - a) Use flathead screwdriver to remove (2) push rivets connecting fascia and impact bar.



3b) Use flathead screwdriver to remove (2) push rivets from bottom passenger side of fascia. Repeat for driver side.



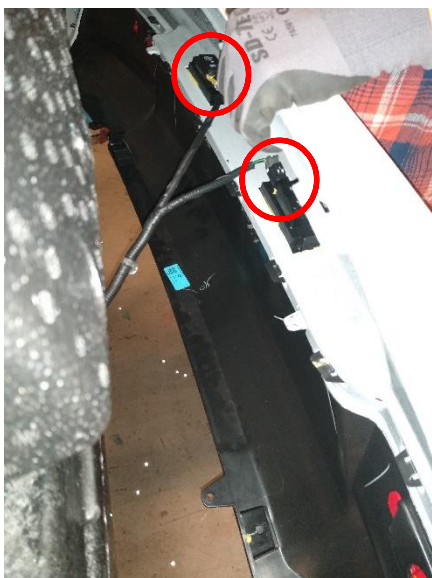
3c) Use phillips screwdriver to remove (1) screw under driver side taillight and flathead screwdriver to remove (1) push rivet. Repeat for passenger side.



4. Loosen wheel well liner – Use phillips screwdriver to remove (4) screws from wheel well liner on driver side. Repeat this process for passenger side



5. Remove fascia - Use plastic trim tools to remove the fascia starting at the outer edges near the wheel wells and gently pull the fascia. Carefully set the fascia aside for reinstallation. Disconnect any sensors if present.



6. Remove end panel/impact bar hardware – Using 13mm socket remove (4) 8mm screws from impact bar/end panel. Return to owner.



7. Install hitch – Raise hitch into position. Fasten 8mm and 7/16 hardware to brackets and then ½ hardware to tow hook (loosely tighten) **see Figure 1**. NOTE: Tape washes to bracket for easier installation.

8. Tighten all 8mm fasteners with torque wrench to 20 Lb.-Ft. (27 N*M).

Tighten all 7/16-14 Gr5 fasteners with torque wrench to 50 Lb.-Ft. (68 N*M).

Tighten all 1/2-13 Gr5 fasteners with torque wrench to 75 Lb.-Ft. (102 N*M).



9. Trim fascia – Locate the center of fascia. Use a tape measure, marker, and die grinder, to cut a 3"x1.50" notch in the bottom of fascia. **See Figure 2**. Note: Be sure area is clear of all electrical wiring before trimming.

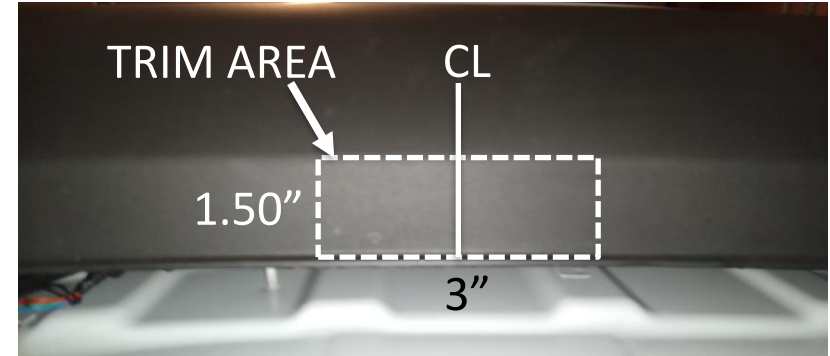


Figure 2

10. Reinstall the fascia, wiring harness, fasteners, wheel liners and taillights removed in Step 2-5.



Shop for quality Draw-Tite products on our website.

Learn more about trailer hitches and towing we have.