



Installation Instructions

PART NUMBERS: 24978, 77978, CQT24978

WARNING

To prevent **SERIOUS INJURY, DEATH or PROPERTY DAMAGE:**

- **ALWAYS** read, understand and follow warnings and instructions for your hitch **BEFORE** installation. Keep for future reference.
- **DO NOT** cut, weld or modify this receiver.
 - **CHECK** all fasteners are tight and your hitch is securely mounted to your vehicle periodically.
- **ALWAYS** read, understand and follow all warnings and instructions for your vehicle and for other accessories you will use with your hitch **BEFORE** use.
- **LOAD** the trailer heavier in front.
- **DO NOT** exceed lower of towing vehicle manufacturer's rating or:

Hitch Type	Max Gross Trailer Weight	Max Tongue Weight
Weight Carrying	2000 lb. (908 kg)	200 lb. (90.8 kg)
Weight Distributing	N/A	N/A

- **ALWAYS** wear your seatbelt.
- **SLOW DOWN** when towing, **NEVER** exceed any posted speed limit.
- If **EXCESS SWAY** occurs, take your foot off the gas pedal and hold the steering wheel as steady as possible. **DO NOT** apply your brakes and **DO NOT** speed up.

Installation Instructions

PART NUMBERS: 24978, 77978, CQT24978

Applications:

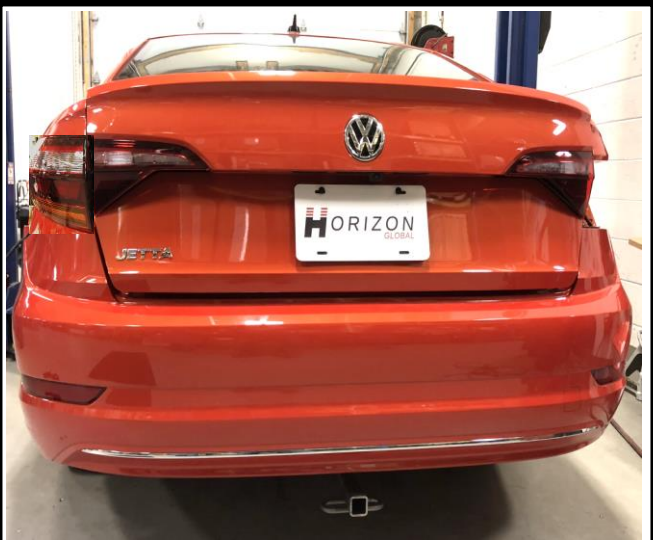
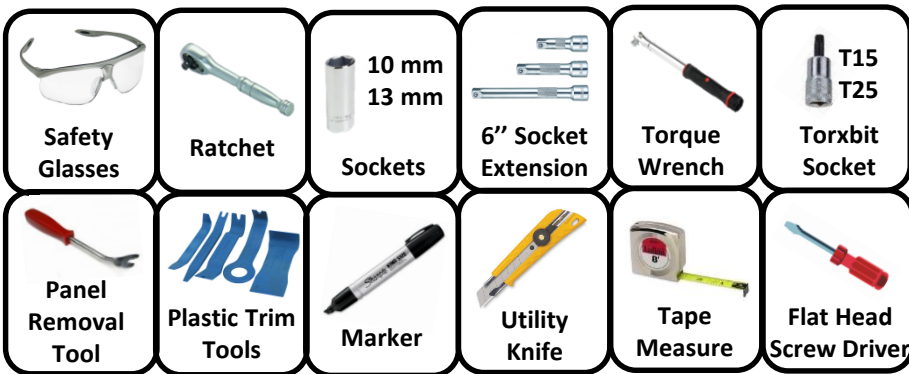
Years	Make	Models
-------	------	--------

2019-Current*	Volkswagen	Jetta
---------------	------------	-------

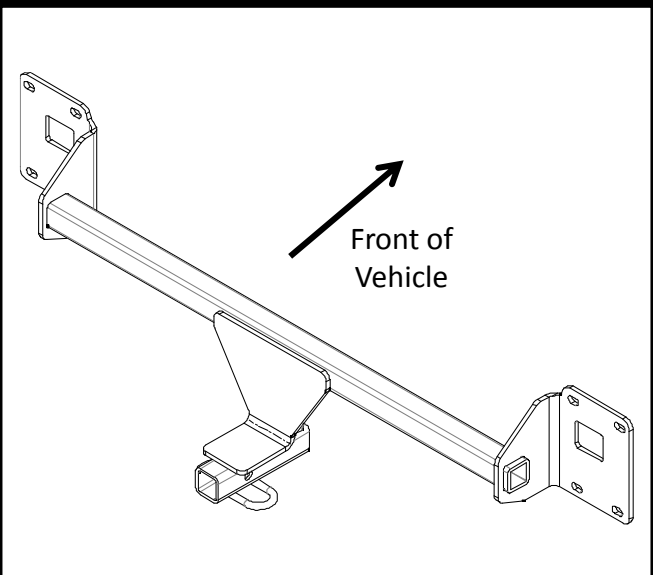
Installation Time: **80 min**

The time listed above is the average time for professional installers. If you do not feel comfortable performing this installation on your own or are in need of assistance, please contact a professional installer.

Equipment Required:



Representative Vehicle Photo



Hitch Illustration

DO NOT EXCEED LOWER OF TOWING VEHICLE MANUFACTURER'S RATING OR:

Hitch Type	Max Gross Trailer Weight	Max Tongue Weight
Weight Carrying	2000 lb. (908 kg)	200 lb. (90.8 kg)
Weight Distributing	N/A	N/A



Always wear **SAFETY GLASSES** when installing hitch

Installation Instructions

PART NUMBERS: 24978, 77978, CQT24978

Fastener Kit: 24978F

①

Qty. (7)

Bolt M8 x 1.25 x 35
CL 9.8

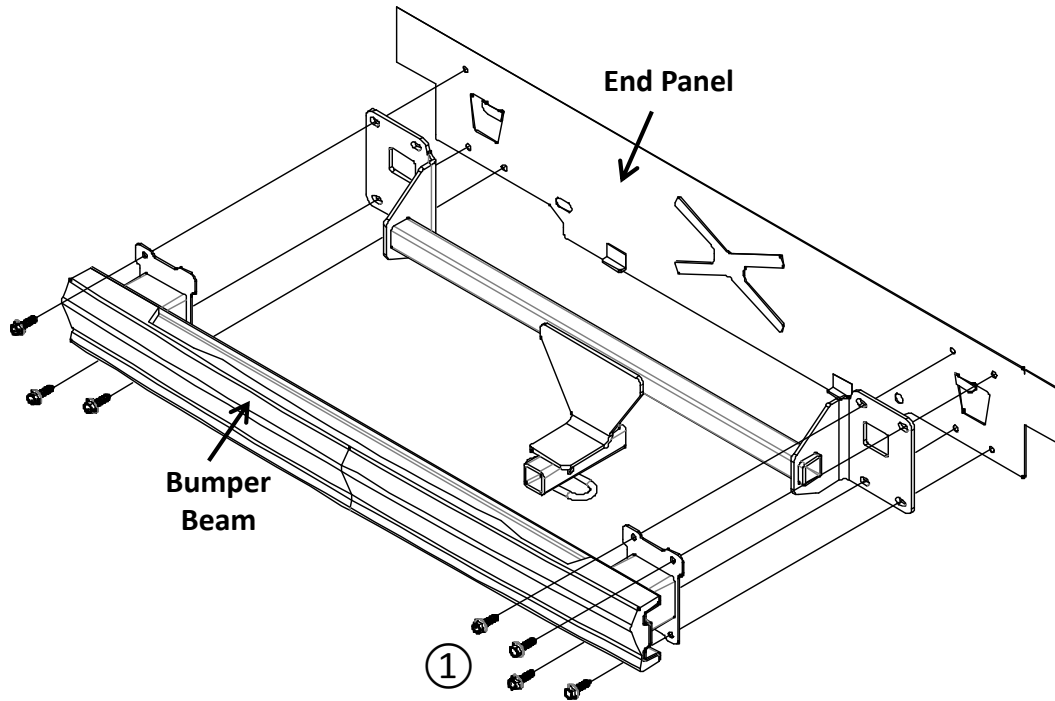


Figure 1

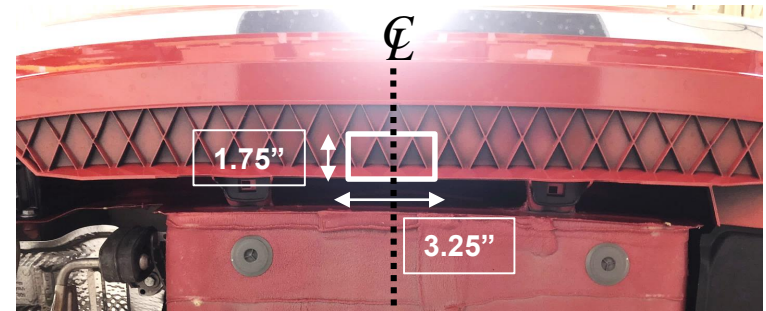


Figure 2

**Authorized Drawbar Kit:
3593 (Sold Separately)**
Drawbar must be used in the **RISE** position only.

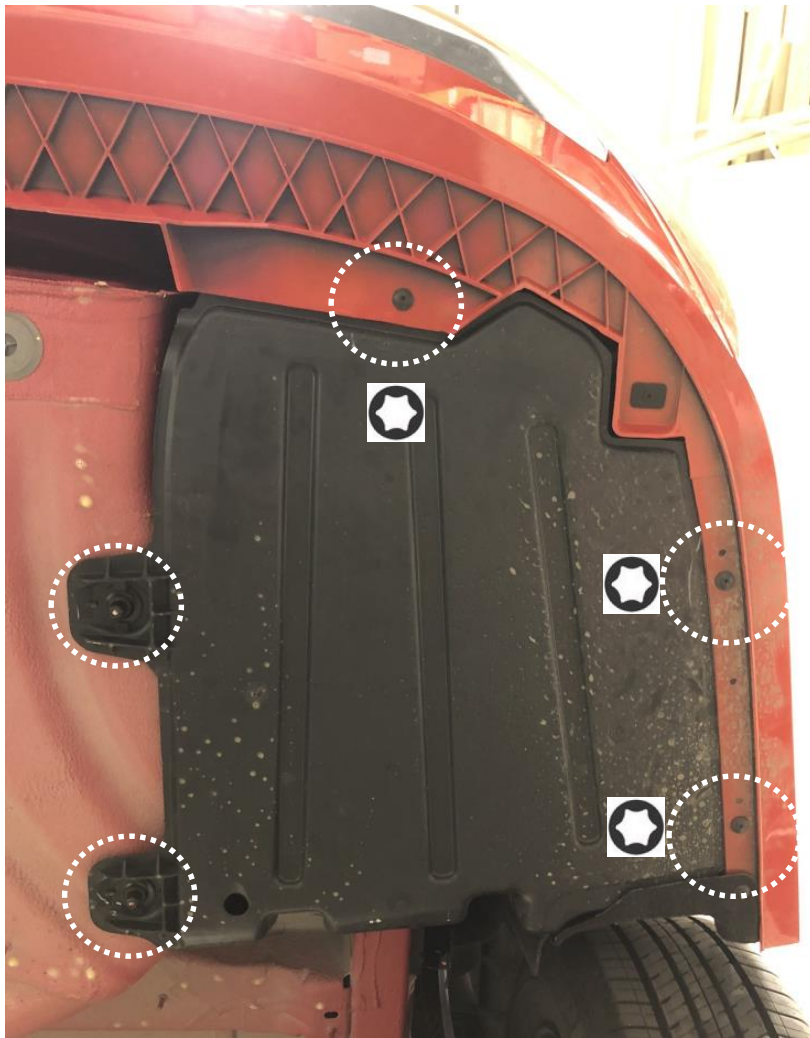
- Remove underbody panel** – Using T25 torxbit and 10 mm socket, remove (3) screws and (2) plastic flange nuts from bottom panel on passenger side.
- Remove taillights** - Open tailgate. Remove the plastic cover near taillight with a flat head screwdriver, both sides. Using T25 torxbit socket, remove (2) screws holding taillight, both sides. Slide the taillights rearward and unplug the wiring.
- Remove bumper fascia** - (a) Using T15 torxbit socket, remove (4) screws and tabs from the bottom fascia. (b) Using T25 torxbit socket, remove (1) screw from the bottom of wheel well liner, (3) horizontal screws from wheel well liner, and (1) vertical screw in the upper area behind the wheel well liner, both sides. (c) Using plastic trim tools, remove the fascia starting at the outer edges near wheel wells while gently pulling the fascia. (d) Disconnect the wiring harness from fascia if present. Set fascia aside.
- Remove bumper beam** - Using a 13 mm socket with 6" extension, remove (7) factory M8 bolts holding bumper beam to end panel.
- Install hitch** – Align the bumper beam with hitch on the floor. Raise the hitch and bumper beam into position aligning holes on the end panel. Loosely reinstall (7) M8 bolts ① to the bumper beam and hitch, see **Figure 1**.
- Tighten all M8 bolts with torque wrench to 25 Lb.-Ft. (34 N*M)**



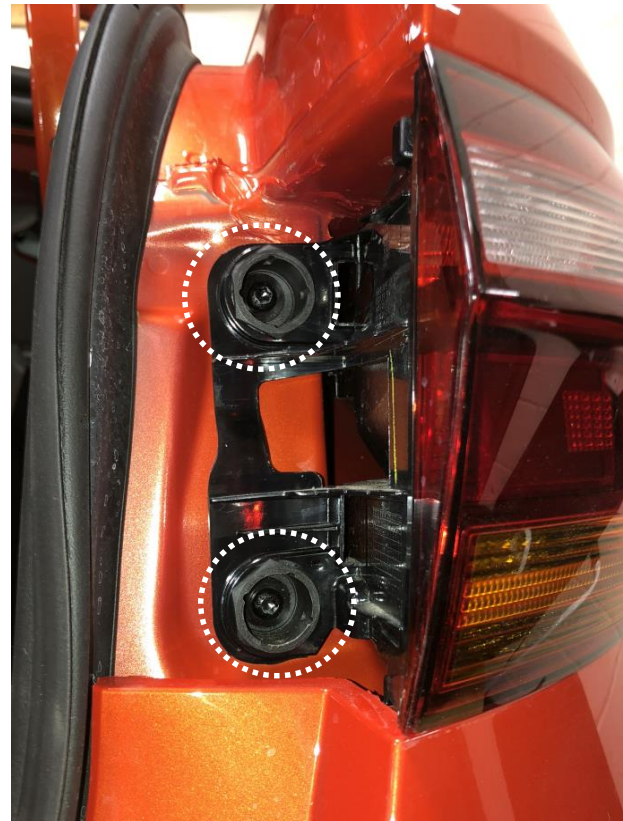
Proper torque is needed to keep the hitch secure to the vehicle when towing.

- Trim bumper fascia** – locate the center of the fascia and trim the fascia as shown in **Figure 2**.
- Reinstall all fasteners, wiring harness, fascia, wheel well trim, taillight, and underbody panel.

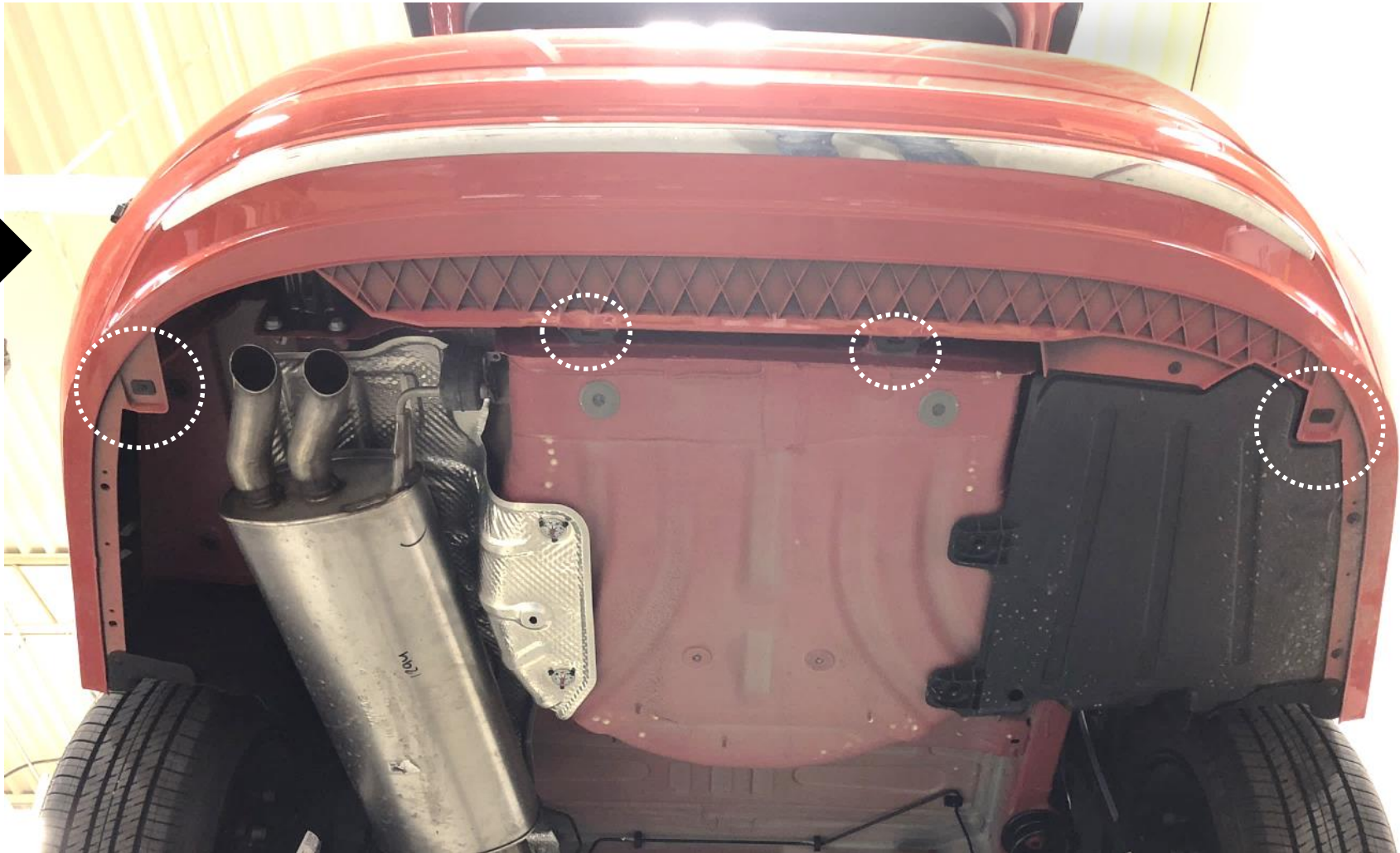
1. Remove underbody panel – Using T25 torxbit and 10 mm socket, remove (3) screws and (2) plastic flange nuts from bottom panel on passenger side.



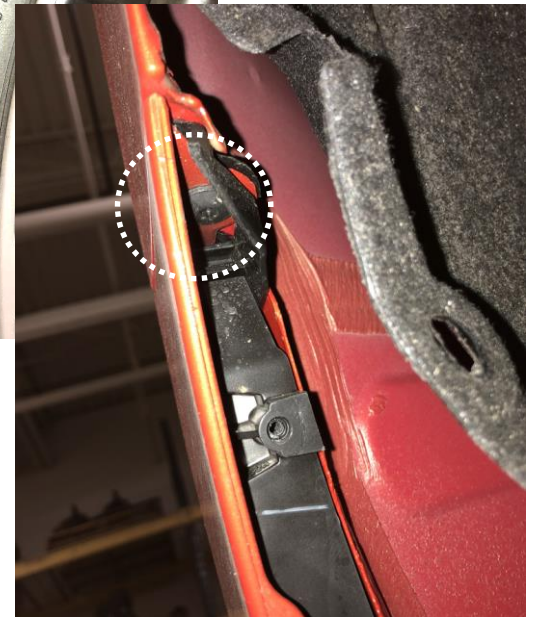
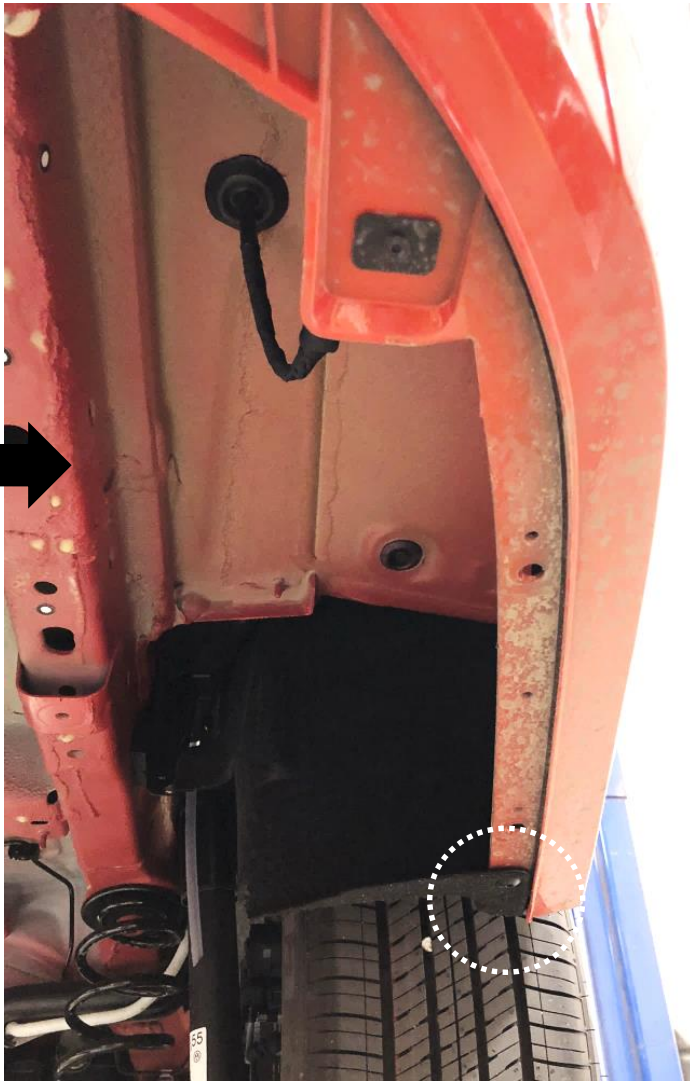
2. Remove taillights - Open tailgate. Remove the plastic cover near taillight with a flat head screwdriver, both sides. Using T25 torxbit socket, remove (2) screws holding taillight, both sides. Slide the taillights rearward and unplug the wiring.



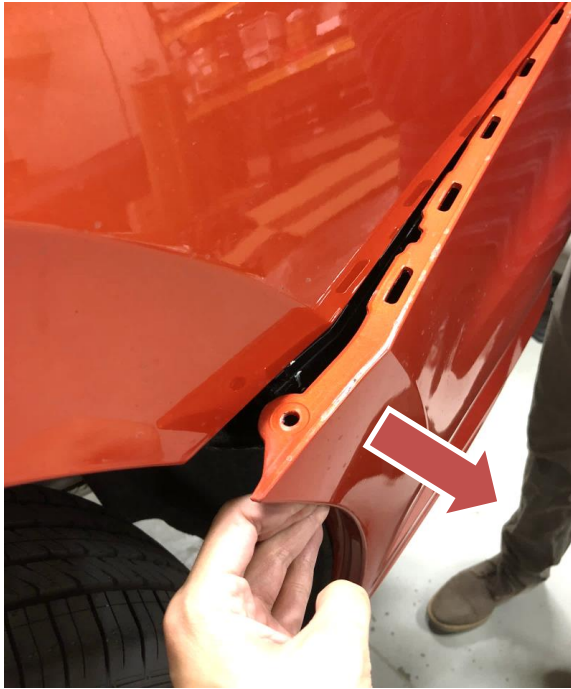
3. Remove bumper fascia - (a) Using T15 torxbit socket, remove (4) screws and tabs from the bottom fascia.



3. Remove bumper fascia - (b) Using T25 torxbit socket, remove (1) screw from the bottom of wheel well liner, (3) horizontal screws from wheel well liner, and (1) vertical screw in the upper area behind the wheel well liner, both sides.



3. Remove bumper fascia - (c) Using plastic trim tools, remove the fascia starting at the outer edges near wheel wells while gently pulling the fascia. (d) Disconnect the wiring harness from fascia if present. Set fascia aside.

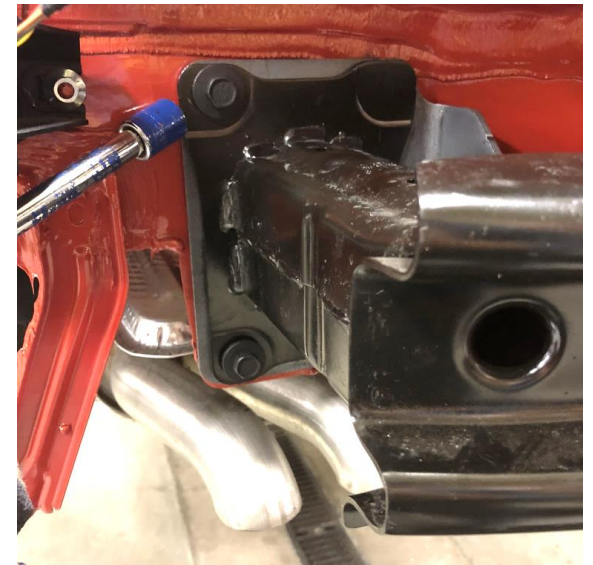
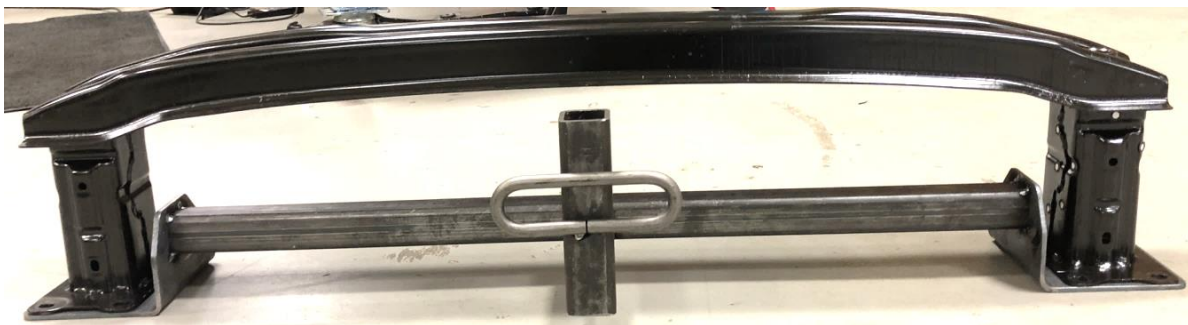
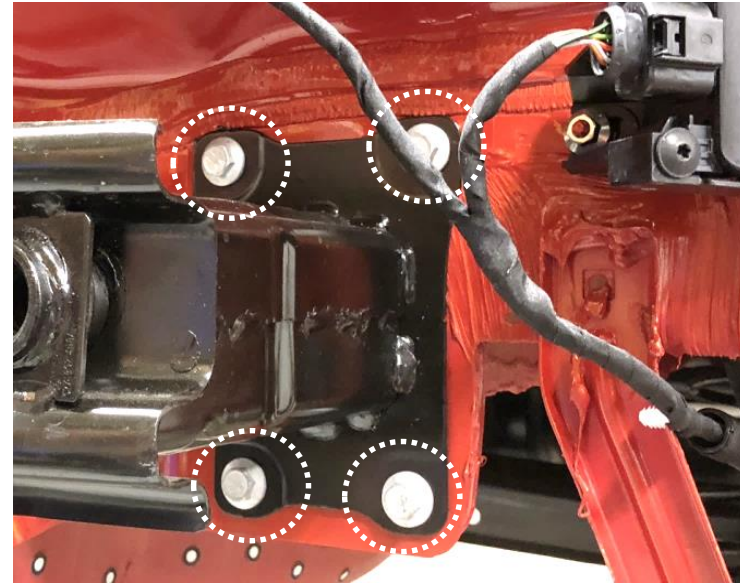
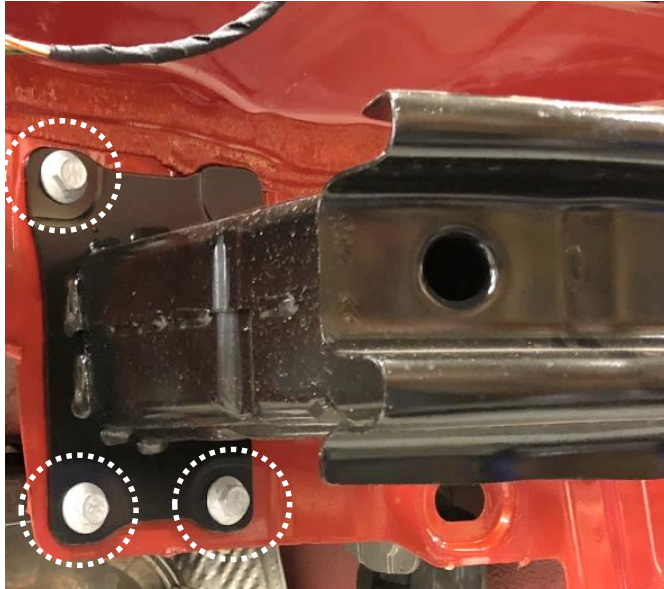


4. Remove bumper beam - Using a 13 mm socket with 6" extension, remove (7) factory M8 bolts holding bumper beam to end panel.

5. Install hitch – Align the bumper beam with hitch on the floor. Raise the hitch and bumper beam into position aligning holes on the end panel. Loosely reinstall (7) M8 bolts ① to the bumper beam and hitch, see [Figure 1](#).

6. Tighten all M8 bolts with torque wrench to 25 Lb.-Ft. (34 N*M)

⚠ Proper torque is needed to keep the hitch secure to the vehicle when towing.



7. Trim bumper fascia – locate the center of the fascia and trim the fascia as shown in **Figure 2**.

8. Reinstall all fasteners, wiring harness, fascia, wheel well trim, taillight, and underbody panel.

