



Installation Instructions

PART NUMBERS: 24972, 77972, CQT24972

Applications:

Years	Make	Models
2018-Current*	Honda	Accord

Installation Time: 60 min

The time listed above is the average time for professional installers. If you do not feel comfortable performing this installation on your own or are in need of assistance, please contact a professional installer.



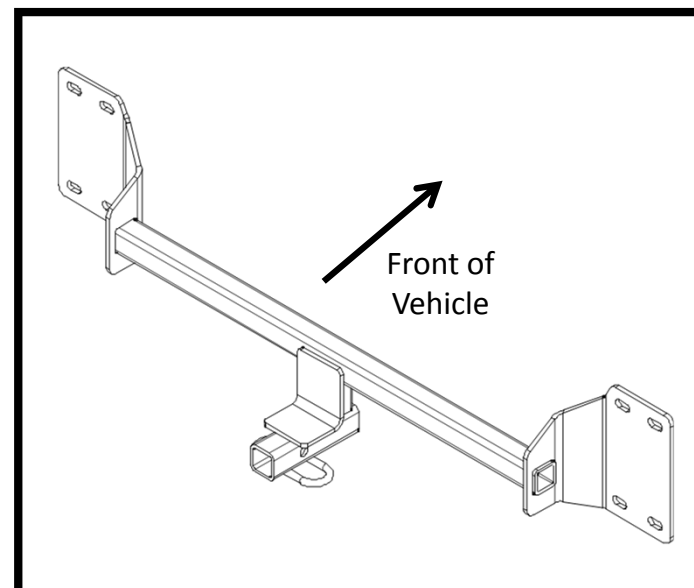
Representative Vehicle Photo

Equipment Required:



DO NOT EXCEED LOWER OF TOWING VEHICLE MANUFACTURER'S RATING OR:

Hitch Type	Max Gross Trailer Weight	Max Tongue Weight
Weight Carrying	2000 lb. (908 kg)	200 lb. (90.8 kg)
Weight Distributing	N/A	N/A




Hitch Illustration

Always wear SAFETY GLASSES when installing hitch

Installation Instructions

PART NUMBERS: 24972, 77972, CQT24972

Fastener Kit: 24972F

①	Qty. (8)	Bolt M8 x 1.25 x 35 CL 9.8	
---	----------	-------------------------------	-------------------------------------------------------------------------------------

Fasteners typical both sides

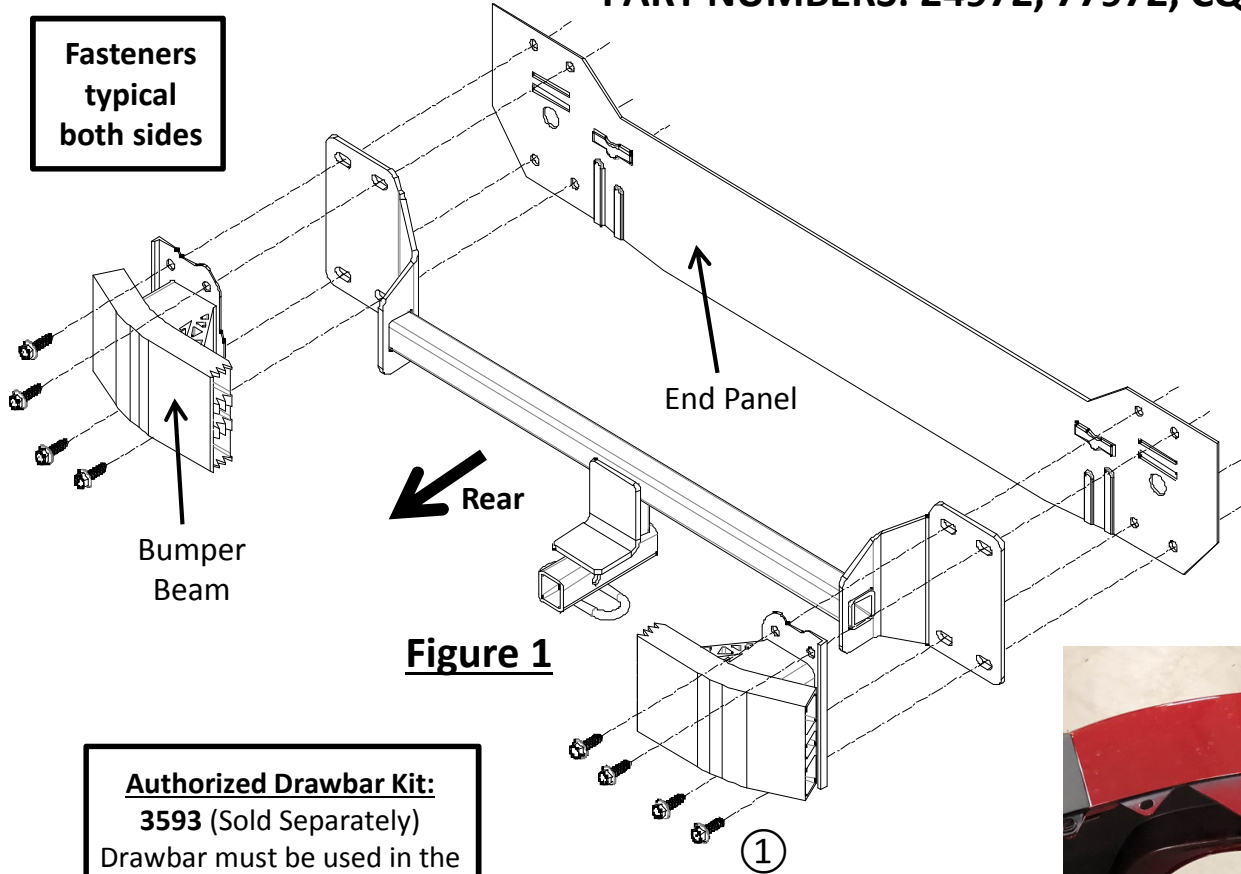


Figure 1



Figure 2

Authorized Drawbar Kit: 3593 (Sold Separately)
Drawbar must be used in the **RISE** position only.

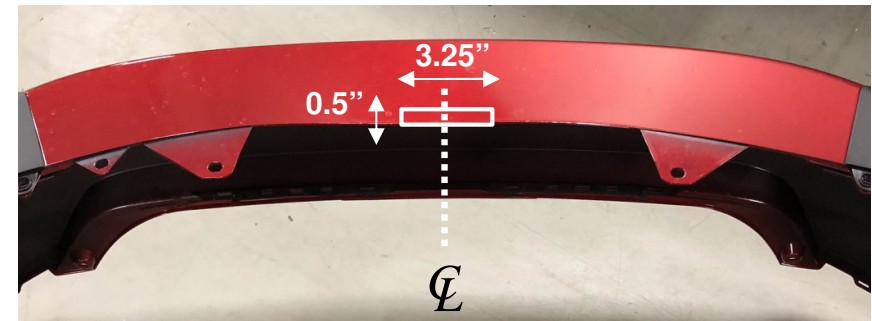


Figure 3

- Remove bumper fascia** – (a) Using panel removal tool, remove (4) plastic rivets from bottom fascia. (b) Using phillips screw driver, remove (2) horizontal screws and (1) vertical screw from wheel well liner each side. (c) Open the rear hatch. Using 5 mm hex bit, remove (2) screws next to taillight. (d) Using plastic trim tools, remove the fascia starting at the outer edges near the wheel wells and gently pull the fascia.
- Remove bumper beam** – Using 12 mm socket, remove (4) factory M8 bolts from bumper plate each side. Return factory bolts to vehicle owner. Gently remove the bumper beam.
- Install hitch** – Push the thin metal piece inward and make it flush to end panel each side, see **Figure 2**. Align the bumper beam with hitch on the floor and raise them together to the end panel. Loosely secure M8 bolt ① to the bumper beam and hitch, (8) places, see **Figure 1**.
- Tighten all M8 fasteners with torque wrench to 25 Lb.-Ft. (34 N*M).**
- (Optional) Trim bumper fascia** – If hitch does push up on bottom of bumper fascia, the fascia can be trimmed as shown in **Figure 3**.
- Reinstall all fasteners and bumper fascia removed in Step 1, 2.

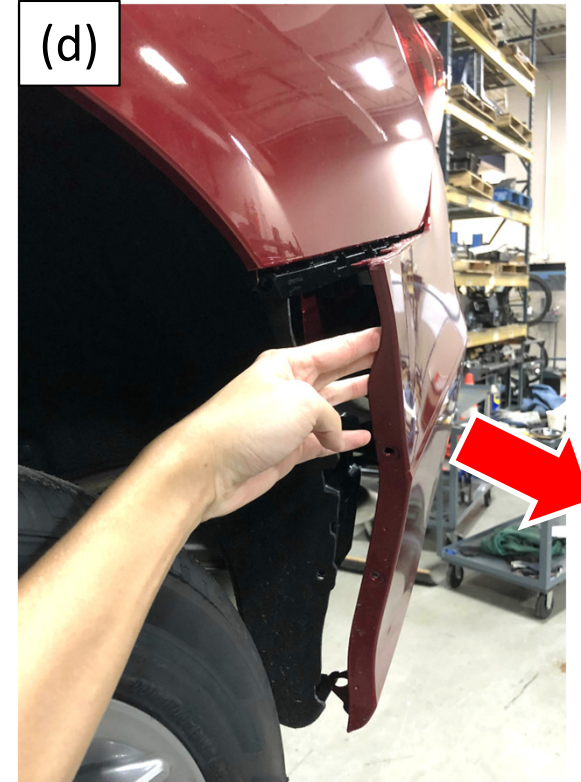
Proper torque is needed to keep the hitch secure to the vehicle when towing.

Note: check hitch frequently, making sure all fasteners and ball are properly tightened. If hitch is removed, plug all holes in trunk pan or other body panels to prevent entry of water and exhaust fumes. A hitch or ball which has been damaged should be removed and replaced. Observe safety precautions when working beneath a vehicle and wear eye protection. Do not cut access or attachment holes with a torch. This product complies with safety specifications and requirements for connecting devices and towing systems of the state of New York, V.E.S.C. Regulation V-5 and SAE J684.

1. **Remove bumper fascia** – (a) Using panel removal tool, remove (4) plastic rivets from bottom fascia.
(b) Using phillips screw driver, remove (2) horizontal screws and (1) vertical screw from wheel well liner each side.



1. Remove bumper fascia – (c) Open the rear hatch. Using 5 mm hex bit, remove (2) screws next to taillight.
(d) Using plastic trim tools, remove the fascia starting at the outer edges near the wheel wells and gently pull the fascia.



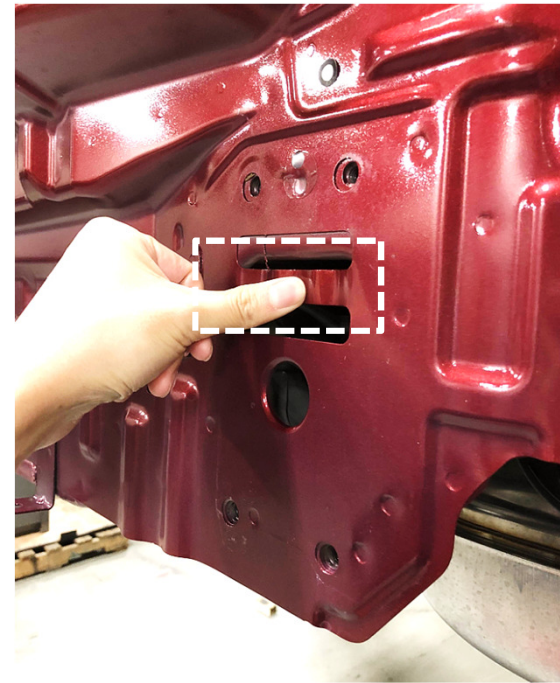
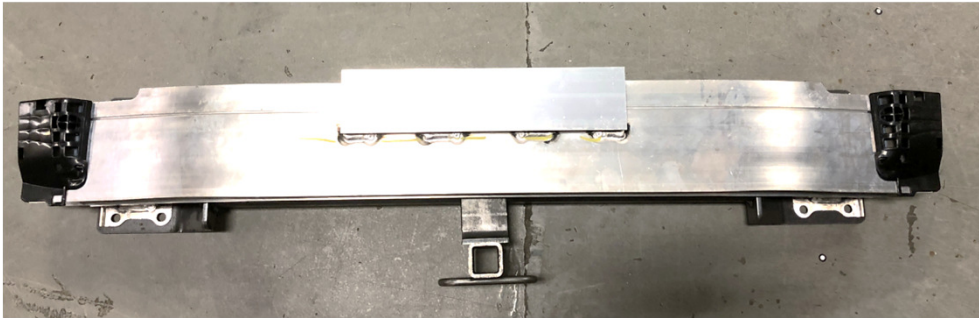
2. Remove bumper beam – Using 12 mm socket, remove (4) factory M8 bolts from bumper plate each side. Return factory bolts to vehicle owner. Gently remove the bumper beam.



3. Install hitch – Push the thin metal piece inward and make it flush to end panel each side, see **Figure 2**. Align the bumper beam with hitch on the floor and raise them together to the end panel. Loosely secure M8 bolt ① to the bumper beam and hitch, (8) places, see **Figure 1**.

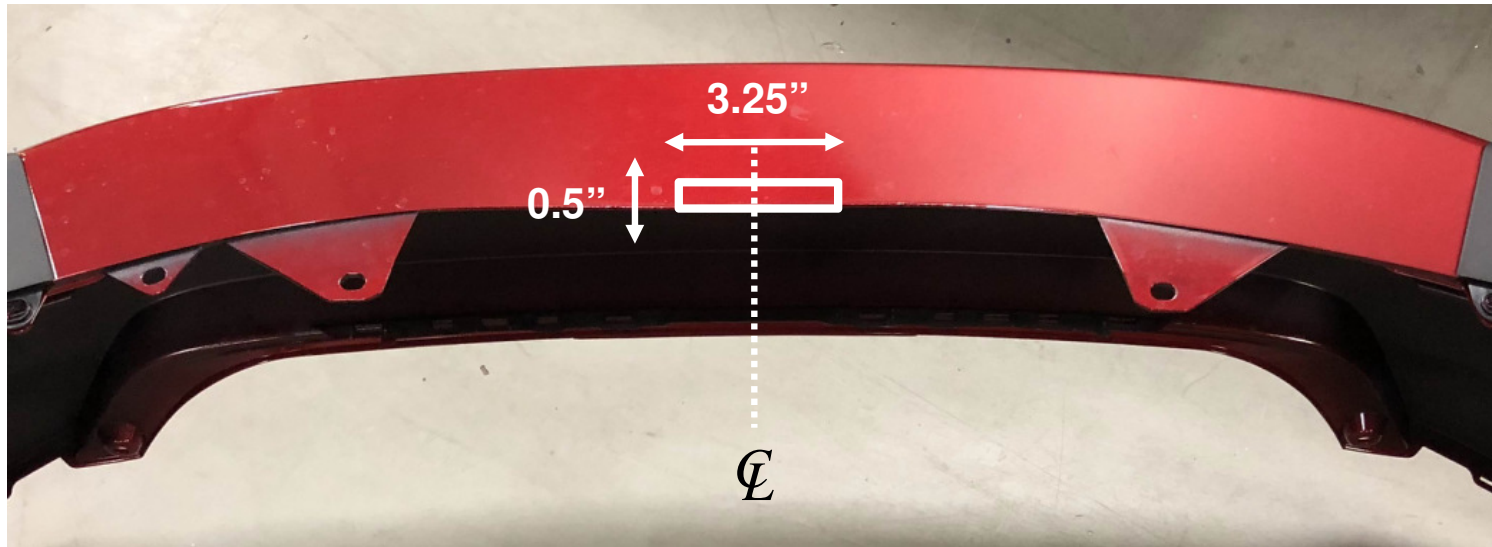
4. Tighten all M8 fasteners with torque wrench to 25 Lb.-Ft. (34 N*M).

⚠ Proper torque is needed to keep the hitch secure to the vehicle when towing.



5. (Optional) Trim bumper fascia – If hitch does push up on bottom of bumper fascia, the fascia can be trimmed as shown in **Figure 3**.

6. Reinstall all fasteners and bumper fascia removed in Step 1, 2.



On our website you can discover more about trailer hitches and towing.