



Installation Instructions

PART NUMBERS: 24968, 77968, CQT24968

Applications:

Years	Make	Models
2015-Current*	Subaru	WRX

Installation Time: 60 min

The time listed above is the average time for professional installers. If you do not feel comfortable performing this installation on your own or are in need of assistance, please contact a professional installer.



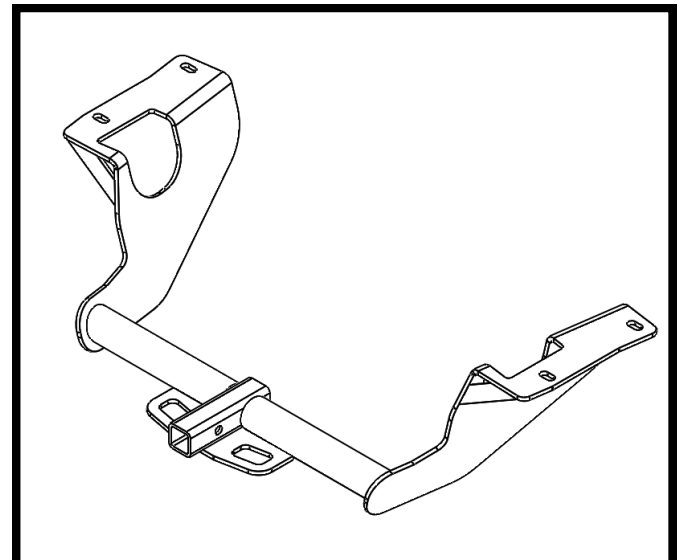
Representative Vehicle Photo

Equipment Required:

 Safety Glasses	 Ratchet	 10mm 11/16" Sockets	 6" Socket Extension	 Universal Joint Socket
 Exhaust Removal Pliers	 Flat Head Screw Driver	 Torque Wrench	 Tin Snips	

DO NOT EXCEED LOWER OF TOWING VEHICLE MANUFACTURER'S RATING OR:

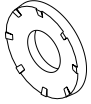
Hitch Type	Max Gross Trailer Weight	Max Tongue Weight
Weight Carrying	2000 lb. (908 kg)	200 lb. (90.8 kg)
Weight Distributing	N/A	N/A



Hitch Illustration



Always wear SAFETY GLASSES
when installing hitch



Conical Washer
Teeth side
Against hitch

Installation Instructions

PART NUMBERS: 24968, 77968, CQT24968

Authorized Drawbar Kit:

3593 (Sold Separately)

Drawbar must be used in the
RISE position only.

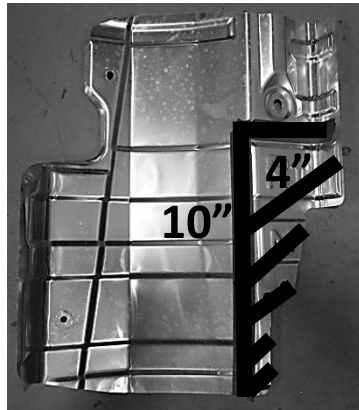


Figure 3

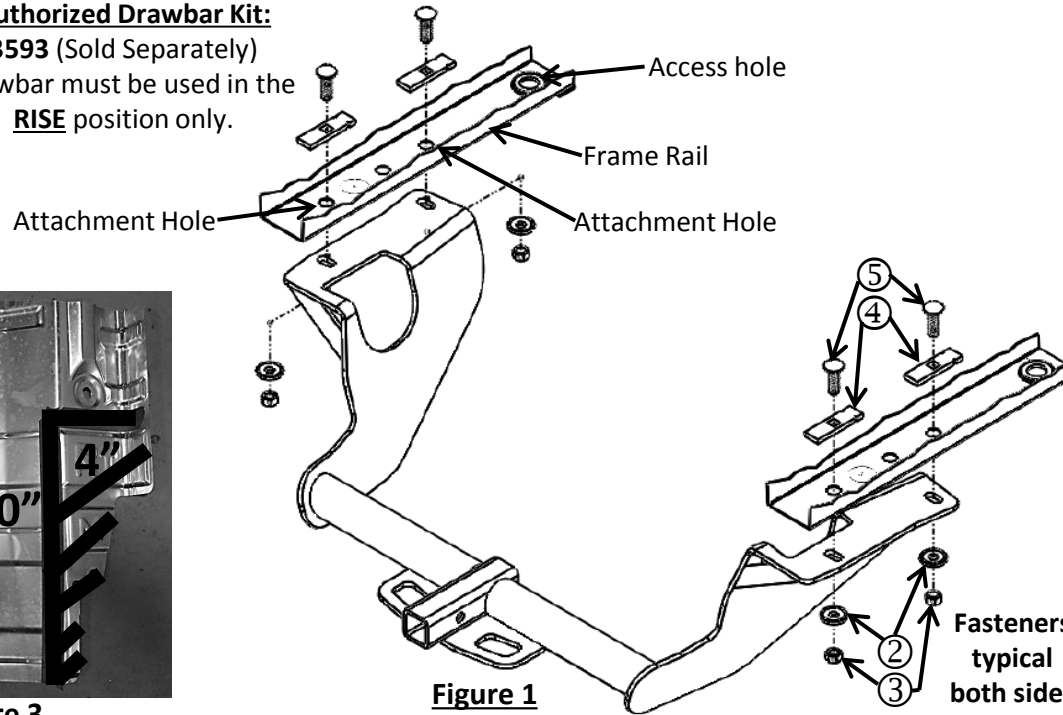
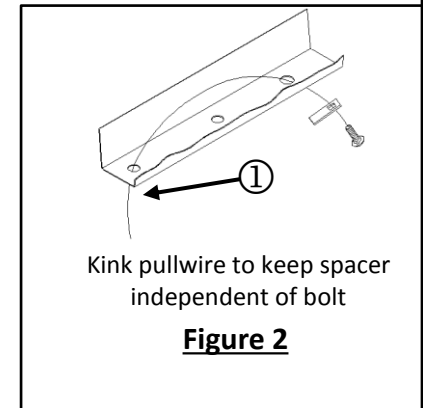


Figure 1

Fastener Kit: 24968F

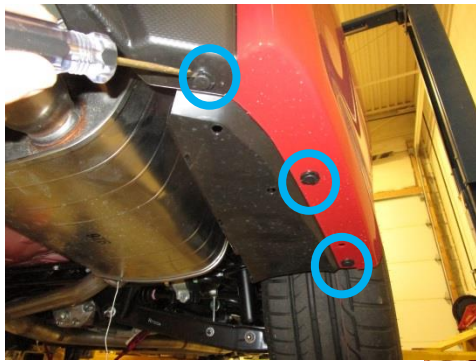
①	Qty. (4)	Pull wire 7/16 Part no. 5481	
②	Qty. (4)	Conical Tooth Washer 7/16" Part no. 01292007	
③	Qty. (4)	Hex Nut 7/16-14	
④	Qty. (4)	Block 7/8"x3"x1/4" Part no. HE-2370-000	
⑤	Qty. (4)	Carriage Bolt 7/16 - 14 x 1.50	



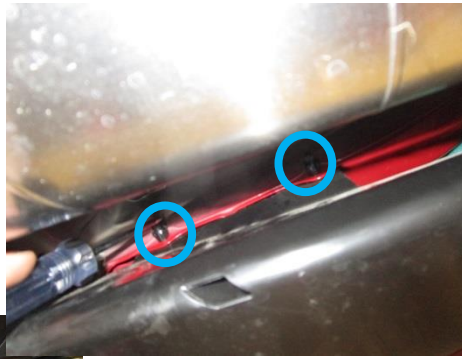
- 1. Remove Appearance Panels** – Using a flat head screw driver remove (7) push pins each side (bottom (3), wheel well (2), exhaust side (2)) to remove the appearance panels.
- 2. Lower Muffler** – Using the exhaust removal pliers, lower muffler by removing the (4) rearmost rubber hangers, (2) hangers per side and (1) in the middle of the car. **Note:** A spray of lubricant on rubber hangers makes them slide off metal pins more easily. **Note:** Support the exhaust before removing rubber hangers.
- 3. Remove and Trim Heat Shield** - Using a 10mm socket remove (4) nuts per side. Using tin snips trim the heat shield (each one), 10" x 4" as seen in figure 3 exposing the frame and attachment holes. **Note:** Do not raise the heat shield into place until the fasteners have been installed into the frame.
- 4. Install fasteners** – Feed the coiled end of pull wire ① through the attachment holes and out of the forward most access hole in the bottom of frame. Attach item ⑤ and ④ to the pull wire and pull the fasteners into position, both sides. See figures 1 and 2.
- 5. Re-install Heat Shields** – Reinstall the trimmed heat shields from step 3 reusing the nuts removed from step 3.
- 6. Install hitch** – Raise hitch into position being careful not to push fasteners back into the frame. **Note:** Leaving the pull wire attached to the fasteners and routing them through the attachment holes on the hitch will help prevent pushing them into the frame. Loosely install items ② and ③ onto items ④ and ⑤ installed in step 4.
- 7. Tighten all 7/16-14 fasteners with torque wrench to 50 Lb.-Ft. (68 N*M).** **Proper torque is needed to keep the hitch secure to the vehicle when towing.**
- 8. Raise muffler** – Raise muffler back into position and reattach rubber hangers, (2) per side and (1) in the middle.
- 9. Re-install Panels** – Reinstall the panels removed in step 1. The push pins removed on the exhaust side can be reinstall in reverse if needed.

Note: check hitch frequently, making sure all fasteners and ball are properly tightened. If hitch is removed, plug all holes in trunk pan or other body panels to prevent entry of water and exhaust fumes. A hitch or ball which has been damaged should be removed and replaced. Observe safety precautions when working beneath a vehicle and wear eye protection. Do not cut access or attachment holes with a torch. This product complies with safety specifications and requirements for connecting devices and towing systems of the state of New York, V.E.S.C. Regulation V-5 and SAE J684.

1. Remove Appearance Panels – Using a flat head screw driver remove (7) push pins each side (bottom (3), wheel well (2), exhaust side (2)) to remove the appearance panels.



2



3



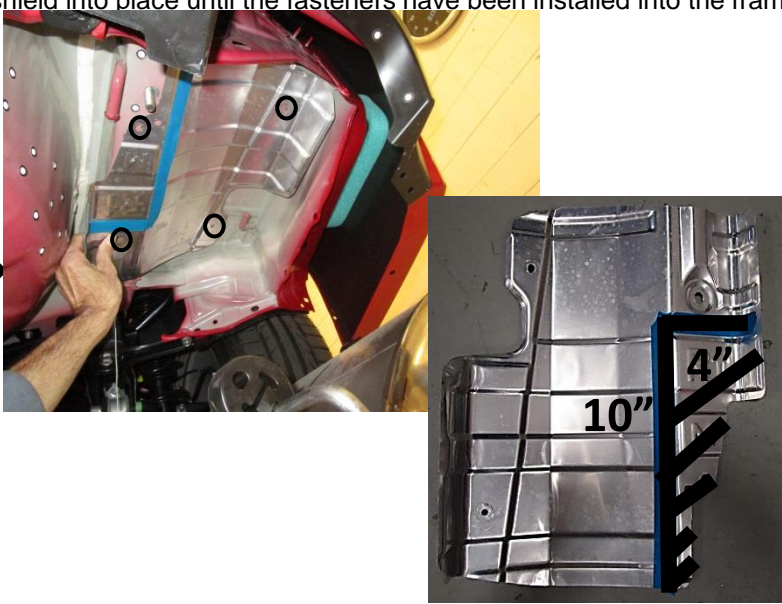
4



2. Lower Muffler – Using the exhaust removal pliers, lower muffler by removing the (4) rearmost rubber hangers, (2) hangers per side. And (1) in the middle of the car. **Note:** A spray of lubricant on rubber hangers makes them slide off metal pins more easily. **Note:** Support the exhaust before removing rubber hangers.



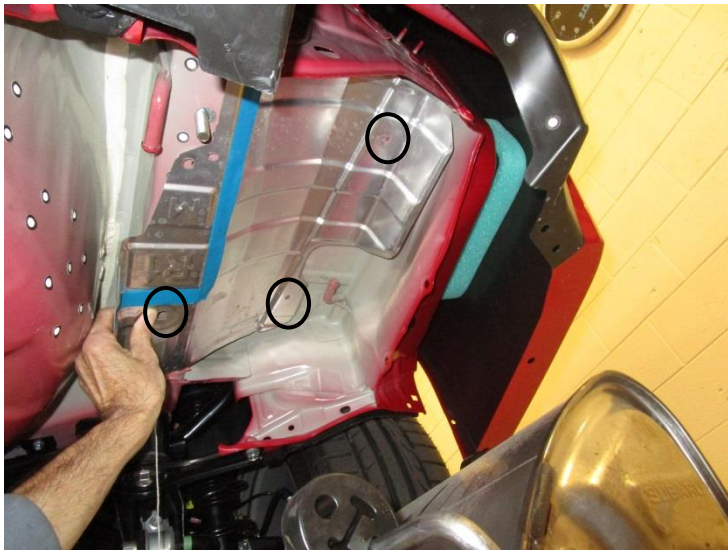
3. Remove and Trim Heat Shield - Using a 10mm socket remove (4) nuts per side. Using tin snips trim the heat shield (each one), 10" x 4" as seen in figure 3 exposing the frame and attachment holes. **Note:** Do not raise the heat shield into place until the fasteners have been installed into the frame.



4. Install fasteners – Feed the coiled end of pull wire ① through the attachment holes and out of the forward most access hole in the bottom of frame. Attach item ⑤ and ④ to the pull wire and pull the fasteners into position, both sides. See figures 1 and 2.



5. Re-install Heat Shields – Reinstall the trimmed heat shields from step 3 reusing the nuts removed from step 3.



6. Install hitch – Raise hitch into position being careful not to push fasteners back into the frame. **Note:** Leaving the pull wire attached to the fasteners and routing them through the attachment holes on the hitch will help prevent pushing them into the frame. Loosely install items ② and ③ onto items ④ and ⑤ installed in step 4.

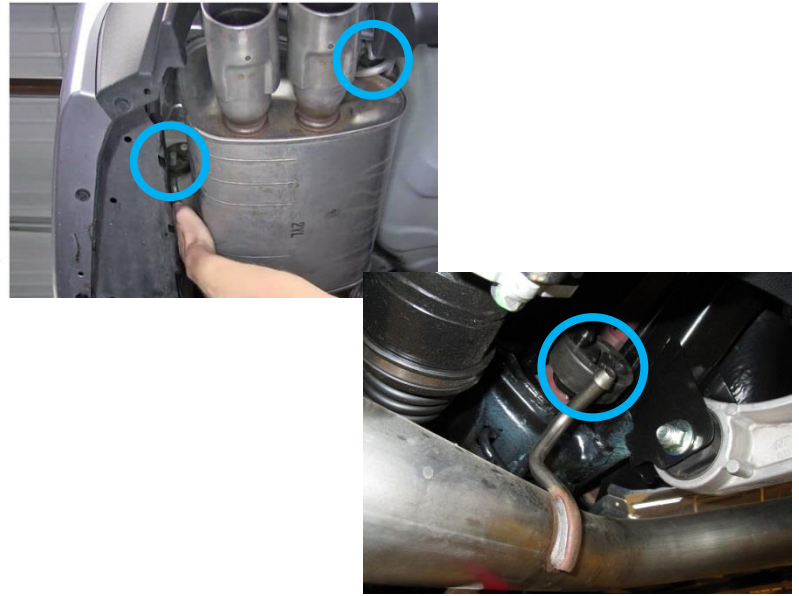


7. Tighten all 7/16-14 Gr5 fasteners with torque wrench to 50 Lb.-Ft. (68 N*M).

⚠ Proper torque is needed to keep the hitch secure to the vehicle when towing.



8. Raise muffler – Raise muffler back into position and reattach rubber hangers, (2) per side and (1) in the middle.



9. Re-install Panels – Reinstall the panels removed in step 1. The push pins removed on the exhaust side can be reinstalled in reverse if needed.



On our website you can discover more about trailer hitches and towing.