



Installation Instructions

PART NUMBERS: 24960, 77960, CQT24960

Applications:

Years	Make	Models
2012 -Current*	Subaru	Impreza Sedan (Excludes WRX and STi)

Installation Time: 40 min

The time listed above is the average time for professional installers. If you do not feel comfortable performing this installation on your own or are in need of assistance, please contact a professional installer.



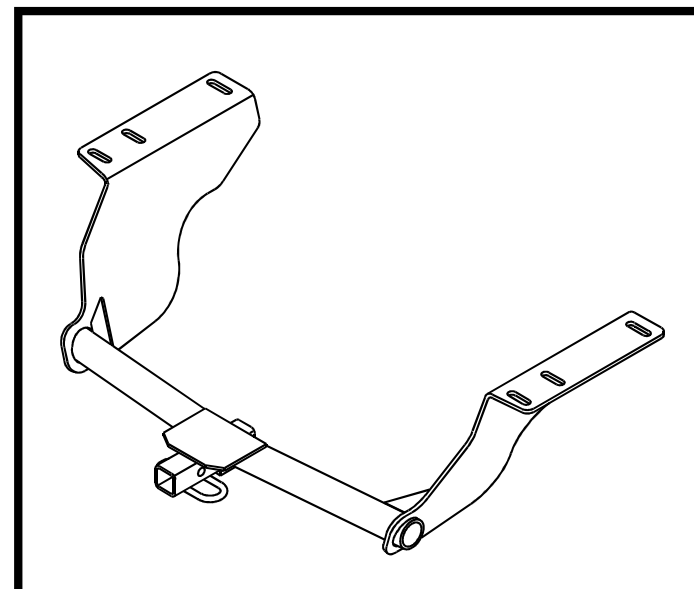
Representative Vehicle Photo

Equipment Required:

Safety Glasses	Ratchet	11/16" 10 mm Sockets	Socket Extension	Torque Wrench	Flat Head Screw Driver	Soapy water
Exhaust Removal Pliers	Tape	Marker	Tin Snips	Tape Measure	Ratchet strap	OR Bungee cord

DO NOT EXCEED LOWER OF TOWING VEHICLE MANUFACTURER'S RATING OR:

Hitch Type	Max Gross Trailer Weight	Max Tongue Weight
Weight Carrying	2000 lb. (908 kg)	200 lb. (90.8 kg)
Weight Distributing	X	X









Hitch Illustration

Always wear SAFETY GLASSES when installing hitch

Installation Instructions

PART NUMBERS: 24960, 77960, CQT24960

Fastener Kit: 24960F

①	Qty. (6)	Carriage Bolt 7/16-14 x 1.50 Gr5	
②	Qty. (6)	Spacer block 1/4 x 7/8 x 3.00 Part no. HE-2370-000	
③	Qty. (2)	Spacer block 1/8 x 7/8 x 3.00 Part no. 122209	
④	Qty. (6)	Conical washer 7/16 Part no. 01292007	
⑤	Qty. (6)	Hex nut 7/16-14 Gr2	
⑥	Qty. (6)	Pull wire 7/16 Part no. 5481	

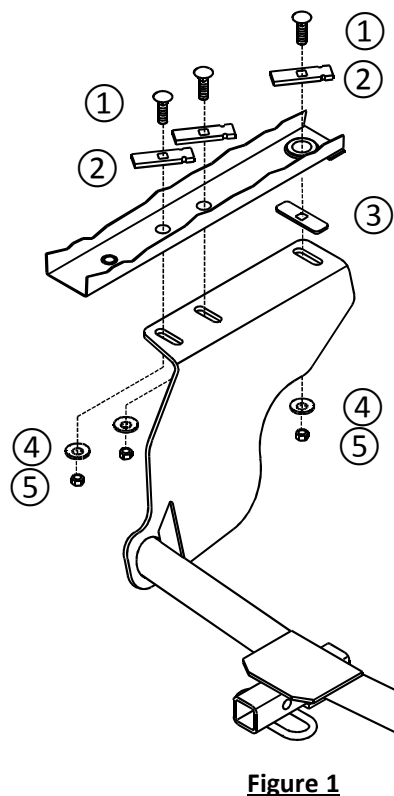


Figure 1

Area to Trim Heat shield

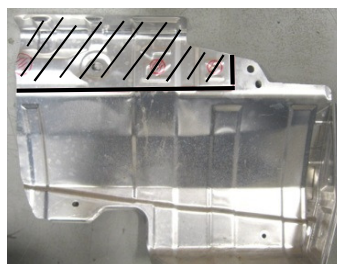


Figure 2

Conical Washer Teeth side Against hitch

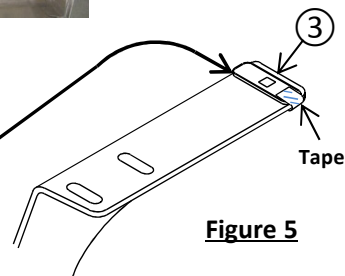
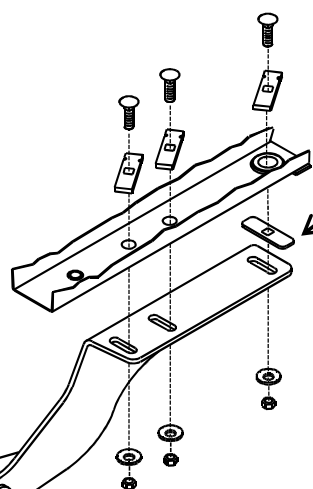


Figure 5



Fasteners typical both sides

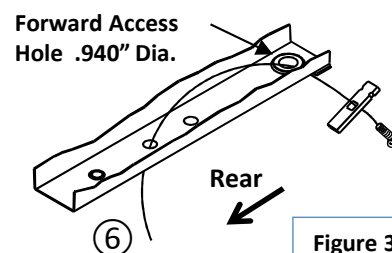


Figure 3

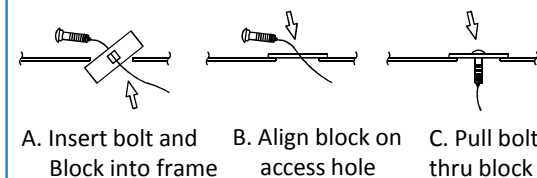


Figure 4

Authorized Drawbar Kit:

3594 (Sold Separately)

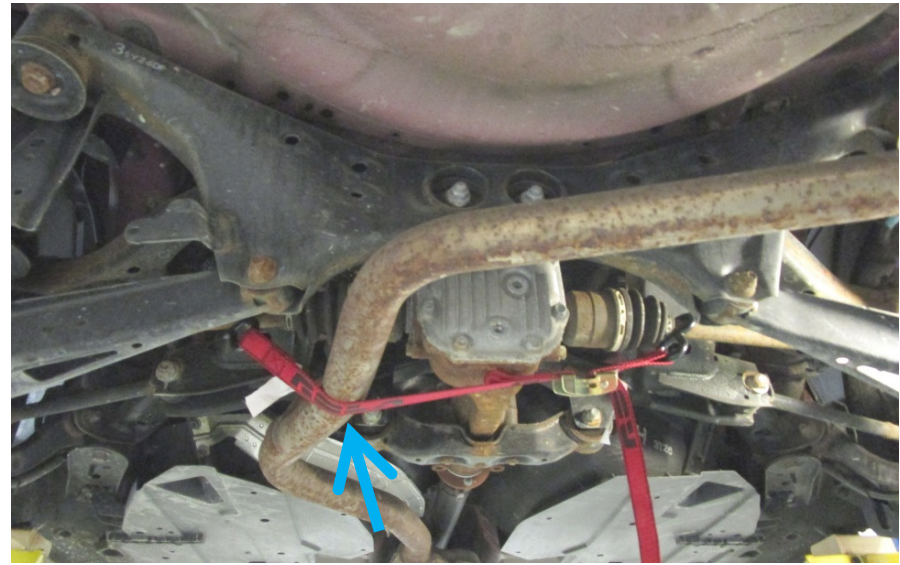
Drawbar must be used in the

RISE position only.

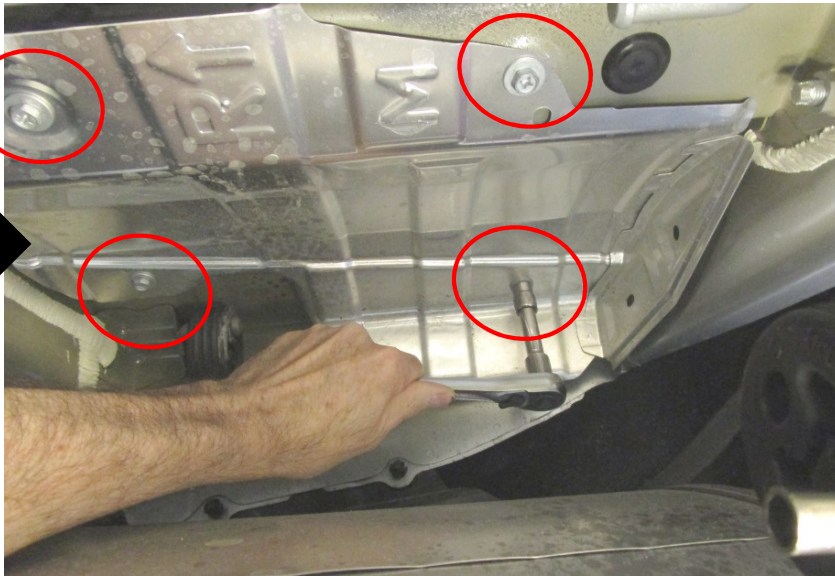
- Lower muffler** – Using an exhaust hanger removal tool or pry bar, lower muffler by removing (3) to (5) rubber hangers (varies by model year). A spray a lubricant or soapy water on rubber hangers makes them slide off metal pins more easily. **NOTE: Using a ratchet strap or bungee cord, be sure that exhaust is supported before removing rubber hangers.**
- Remove heat shield** – Using a 10mm socket, remove (4) screws holding heat shield(s) to vehicle. **NOTE: Shield will be trimmed and replaced prior to installing hitch.**
- Remove rubber plugs** - using a flat screw driver, remove (3) rubber plugs from the (3) forward holes in the bottom of the frame. Do not remove the rearmost rubber plug.
- Trim heat shield** – Using metal shears, trim the heat shield as shown. **See figure 2.**
- Reinstall heat shield** – Reinstall heat shield using (3) of the screws removed in step 2.
- Install fasteners** – Feed the coiled end of pull wire through the second attachment hole and out of the forward most access hole in the bottom of frame. Attach the 7/16" carriage bolt and 1/4" thick spacer block (item 2) to the pull wire and pull the fasteners into position, both sides. Repeat process for the middle attachment, both sides. Make sure the spacer blocks are sitting flat inside the frame and do not overlap. **See figure 3.**
- Install forward most fasteners** – Using the reverse fish wire method, attach the 7/16" carriage bolts and 1/4" thick spacer blocks (item 2) to the pull wire and pull the fasteners into position, both sides. **See figure 4.**
- Attach spacer blocks** – using tape, secure the 1/8" thick spacer blocks (item 3) to the top of hitch brackets at the forward most attachment, (1) per side, **see figure 5.**
- Install hitch** – raise hitch into position being careful not to push fasteners back into the frame. Using an 11/16" socket, loosely install the 7/16 conical toothed washers and 7/16-14 hex nuts onto carriage bolts, (6) places. Make sure the 1/8" space blocks (item 3) are sitting flush against the bottom of the frame and are not on the raised area of frame. If necessary, adjust the hitch towards the driver's side to provide more clearance between the hitch and muffler. Torque fasteners to specifications below.
- Tighten all 7/16-14 Gr5 fasteners with torque wrench to 50 Lb.-Ft. (68 N*M)** **⚠ Proper torque is needed to keep the hitch secure to the vehicle when towing.**
- Raise muffler back into position and reattach all rubber hangers** removed in step 1.

Note: check hitch frequently, making sure all fasteners and ball are properly tightened. If hitch is removed, plug all holes in trunk pan or other body panels to prevent entry of water and exhaust fumes. A hitch or ball which has been damaged should be removed and replaced. Observe safety precautions when working beneath a vehicle and wear eye protection. Do not cut access or attachment holes with a torch. This product complies with safety specifications and requirements for connecting devices and towing systems of the state of New York, V.E.S.C. Regulation V-5 and SAE J684.

1. **Lower muffler** – Using an exhaust hanger removal tool or pry bar, lower muffler by removing (3) to (5) rubber hangers (varies by model year). A spray a lubricant or soapy water on rubber hangers makes them slide off metal pins more easily. **NOTE: Using a ratchet strap or bungee cord, be sure that exhaust is supported before removing rubber hangers.**



2. **Remove heat shield** – Using a 10mm socket, remove (4) screws holding heat shield(s) to vehicle. **NOTE: Shield will be trimmed and replaced prior to installing hitch.**

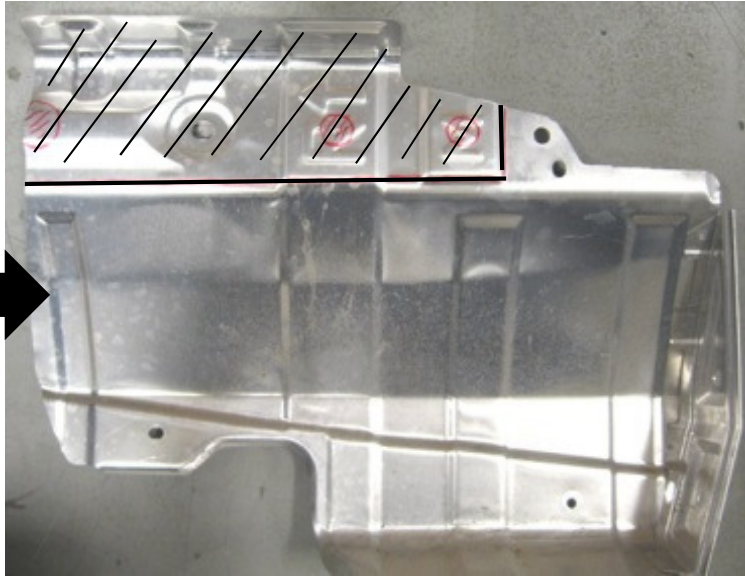


3. **Remove rubber plugs** - using a flat screw driver, remove (3) rubber plugs from the (3) forward holes in the bottom of the frame. Do not remove the rearmost rubber plug.



4. **Trim heat shield** – Using metal shears, trim the heat shield as shown. See figure 2.

Area to Trim
Heat shield



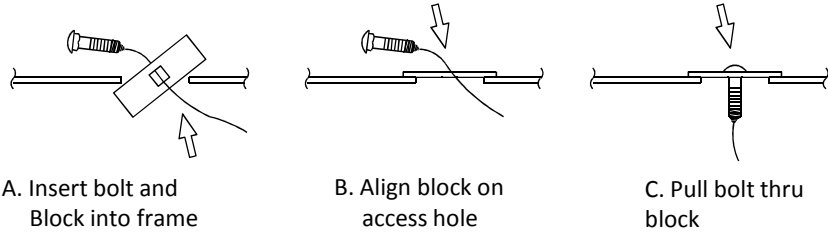
5. **Reinstall heat shield** – Reinstall heat shield using (3) of the screws removed in step 2.



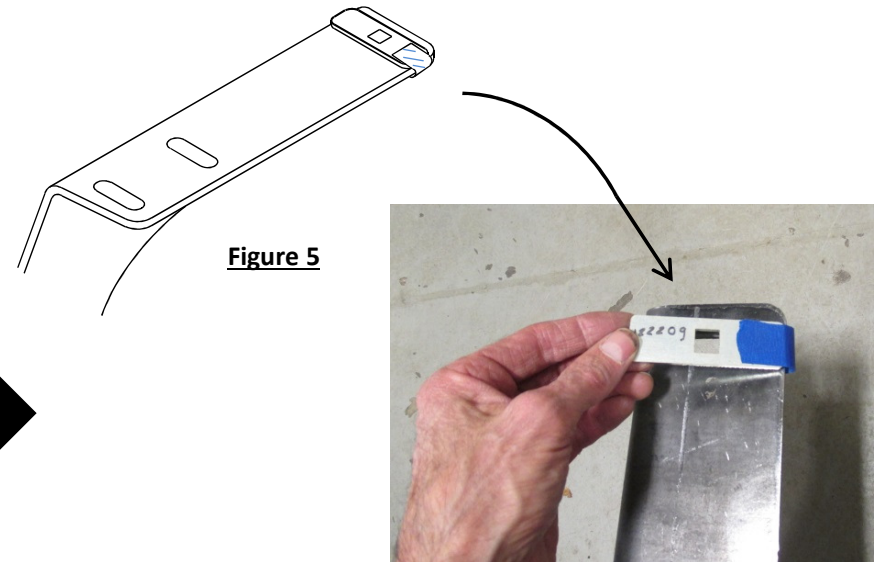
6. **Install fasteners** – Feed the coiled end of pull wire through the second attachment hole and out of the forward most access hole in the bottom of frame. Attach the 7/16" carriage bolt and 1/4" thick spacer block (item 2) to the pull wire and pull the fasteners into position, both sides. Repeat process for the middle attachment, both sides. Make sure the spacer blocks are sitting flat inside the frame and do not overlap. See figure 3.



7. Install forward most fasteners – Using the reverse fish wire method, attach the 7/16" carriage bolts and 1/4" thick spacer blocks (item 2) to the pull wire and pull the fasteners into position, both sides..



8. Attach spacer blocks – using tape, secure the 1/8" thick spacer blocks (item 3) to the top of hitch brackets at the forward most attachment, (1) per side.



9. Install hitch – raise hitch into position being careful not to push fasteners back into the frame. Using an 11/16" socket, loosely install the 7/16 conical toothed washers and 7/16-14 hex nuts onto carriage bolts, (6) places. Make sure the 1/8" space blocks (item 3) are sitting flush against the bottom of the frame and are not on the raised area of frame. If necessary, adjust the hitch towards the driver's side to provide more clearance between the hitch and muffler. Torque fasteners to specifications below.



10. Tighten all 7/16-14 Gr5 fasteners with torque wrench to 50 Lb.-Ft. (68 N*M)

⚠ Proper torque is needed to keep the hitch secure to the vehicle when towing.



11. **Raise muffler back into position and reattach all rubber hangers removed in step 1.**



On our website you can discover more about trailer hitches and towing.