



Installation Instructions

PART NUMBERS: 24954, 77336, CQT24954

Applications:

Years	Make	Models
2016-Current*	Honda	Civic Sedan
2016-Current*	Honda	Civic Coupe
2017-Current*	Honda	Civic Hatchback

Installation Time: **65 min.**

The time listed above is the average time for professional installers. If you do not feel comfortable performing this installation on your own or are in need of assistance, please contact a professional installer.

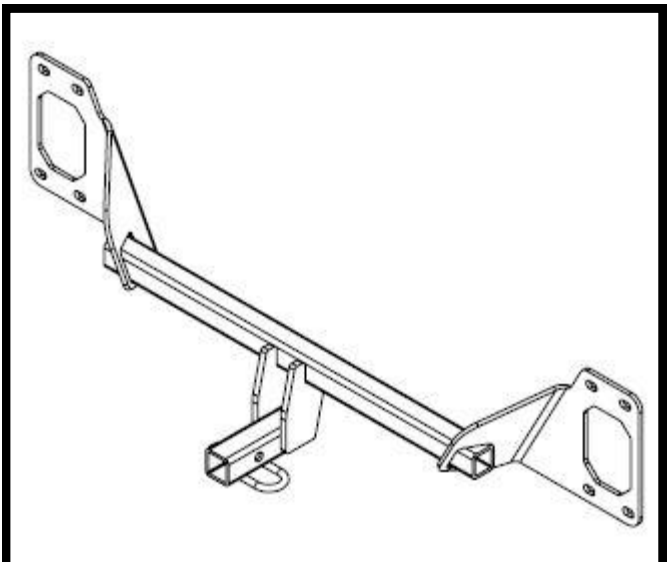


Representative Vehicle Photo

Equipment Required:

DO NOT EXCEED LOWER OF TOWING VEHICLE MANUFACTURER'S RATING OR:

Hitch Type	Max Gross Trailer Weight	Max Tongue Weight
Weight Carrying	2000 lb. (908 kg)	200 lb. (90 kg)
Weight Distributing	X	X



Hitch Illustration





Always wear **SAFETY GLASSES** when installing hitch

Installation Instructions

PART NUMBERS: 24954, 77336, CQT24954

FASTENER KIT: 2 4 9 5 4 F

①	Qty. (8)	Hex bolt M8 X 1.25 X 30 CL8.8	
②	Qty. (8)	Conical washer 3/8"	

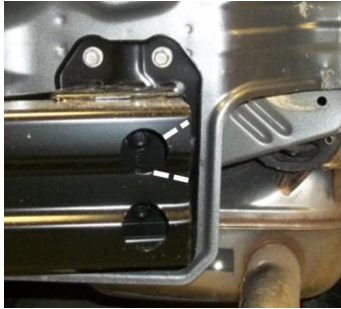


Figure 2

Trim bumper as needed for fascia clearance. Both sides

(Sold separately)

Drawbar Kit: 3593

Drawbar must be used in the **RISE** position only.

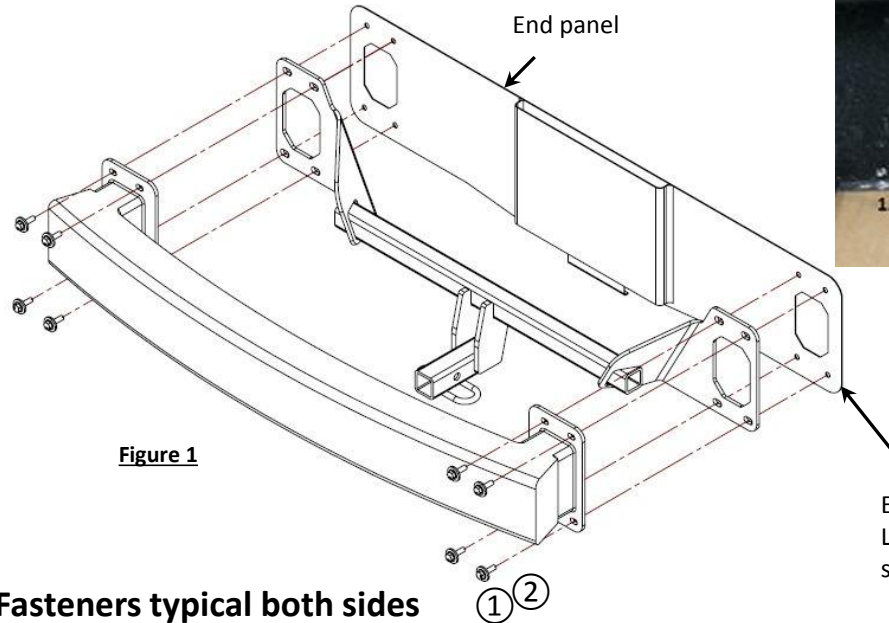


Figure 1

Note: Fasteners typical both sides

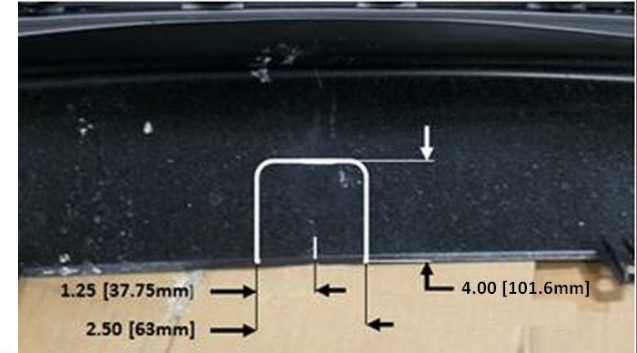



Figure 3

Fascia trimming
2.50 X 4.00 cutout in fascia required.
Use drill to create radius.

Existing weld nuts
Located on opposite
side of end panel



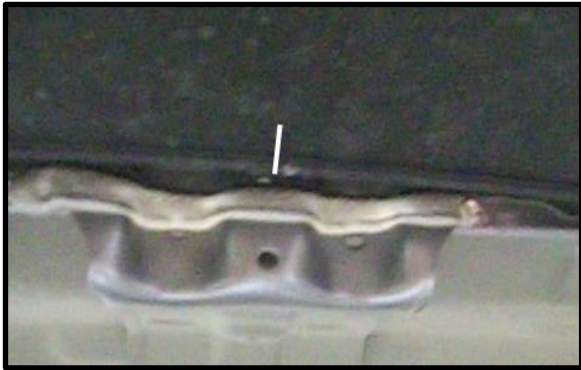
**Conical washer
teeth side
against hitch**

1. Mark centerline of fascia with marker or tape.
2. **Remove plastic rivets and screws:** Remove plastic rivets from supports on bottom of bumper fascia. Rivets are released by first pulling out center post of rivet approx 1/4". Rivet can then be pushed out by hand. Remove the Philip screws from wheel well opening. (approx. 3 each side).
3. **Open trunk/hatch:** Open trunk to remove the hex screws from under the rear hatch securing the bumper fascia. Repeat for each side.
4. **Bumper fascia removal;** Loosen the tail lights bolts for additional clearance, during fascia removal. Gently pull up from the rear wheel well trim panel each side, unclipping the tabs inside. Work up to taillights and continue to gently remove along the bottom of the tail lights. Using a small screwdriver lift cleats between the fascia and tail lights if needed. Continue to remove along inside bottom to the trunk, if needed, use a small flat screw driver to release the cleats at the top of the fascia while carefully pulling the fascia away from the vehicle. If present disconnect any wiring harness at the fascia, and put the fascia cover aside.
5. **Bumper removal:** Remove the (8) bolts holding the bumper in place and return the fasteners to the owner.
6. **Bumper trimming:** using a die grinder remove the material shown in Figure 2. Both sides as needed.
7. **Hitch installation:** Raise the hitch and bumper into position as shown, and attach using the fasteners provided.
8. **Tighten all M8 CL8.8 fasteners with torque wrench to 20 Lb.-Ft. (27 N*M).**
 **Proper torque is needed to keep the hitch secure to the vehicle when towing.**
9. **Trim fascia:** using the center of the fascia marked in step 1. 2.50 x 4.125 off center mark. Use drill to create radius. See Figure 3.
10. **Reinstall fascia:** starting from the center of the vehicle lineup and gently reinstall the rear fascia and all fasteners in reverse order steps 2-4. (Note: reattach any wiring harness if removed)

Note: check hitch frequently, making sure all fasteners and ball are properly tightened. If hitch is removed, plug all holes in trunk pan or other body panels to prevent entry of water and exhaust fumes. A hitch or ball which has been damaged should be removed and replaced. Observe safety precautions when working beneath a vehicle and wear eye protection. Do not cut access or attachment holes with a torch.

This product complies with safety specifications and requirements for connecting devices and towing systems of the state of New York, V.E.S.C. Regulation V-5 and SAE J684.

1. Mark centerline of fascia with marker or tape.



2. **Remove plastic rivets and screws:** Remove plastic rivets from supports on bottom of bumper fascia. Rivets are released by first pulling out center post of rivet approx 1/4". Rivet can then be pushed out by hand. Remove the Philip screw (approx. 3 each side).



3. **Open trunk:** Open trunk to remove the hex screw (2) from under the rear hatch securing the bumper fascia. Repeat for each side.



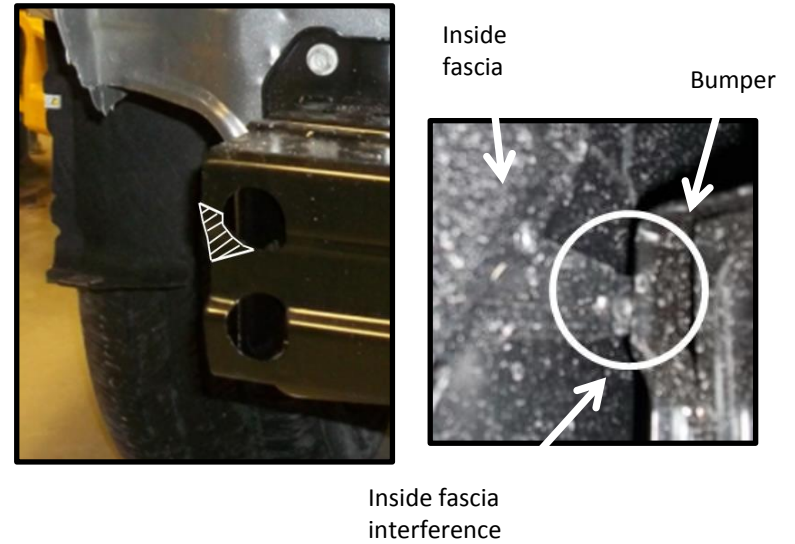
4. **Bumper fascia removal;** Loosen the tail lights bolts for additional clearance for fascia removal. Gently pull up from the rear wheel well trim panel each side, unclipping the tabs inside. Work up to taillights and continue to gently remove along the bottom of the tail lights. Using a small screwdriver lift cleats between the fascia and tail lights if needed. Continue to remove along inside bottom to the trunk, if needed, use a small flat screw driver to release the cleats at the top of the fascia while carefully pulling the fascia away from the vehicle. If present disconnect any wiring harness at the fascia, and put the fascia cover aside.



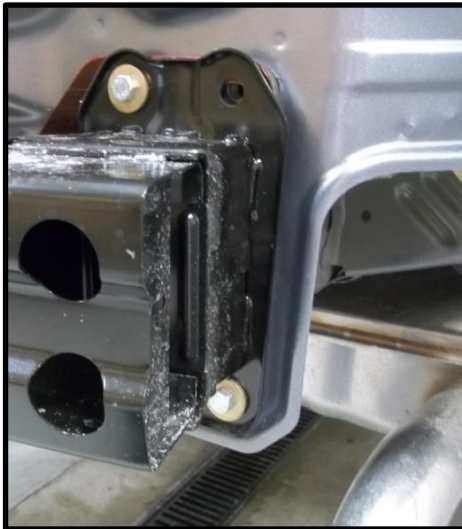
5. Bumper removal: Remove the (8) bolts holding the bumper in place and return the fasteners to the owner.



6. Bumper trimming: using a die grinder remove the material shown in Figure 2. Both sides

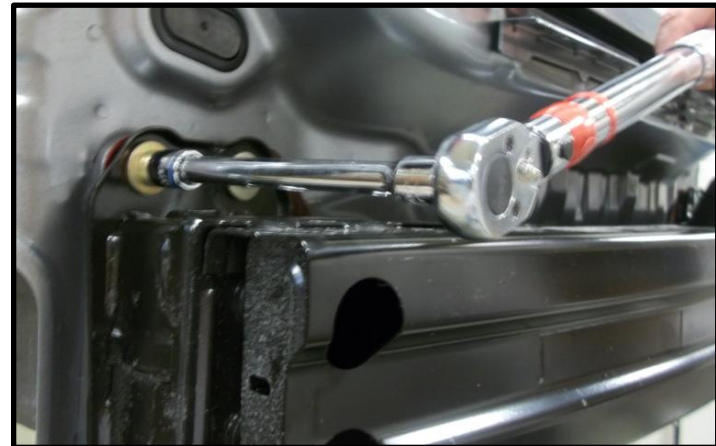


7. Hitch installation: Raise the hitch and bumper into position as shown, and attach using the fasteners provided.



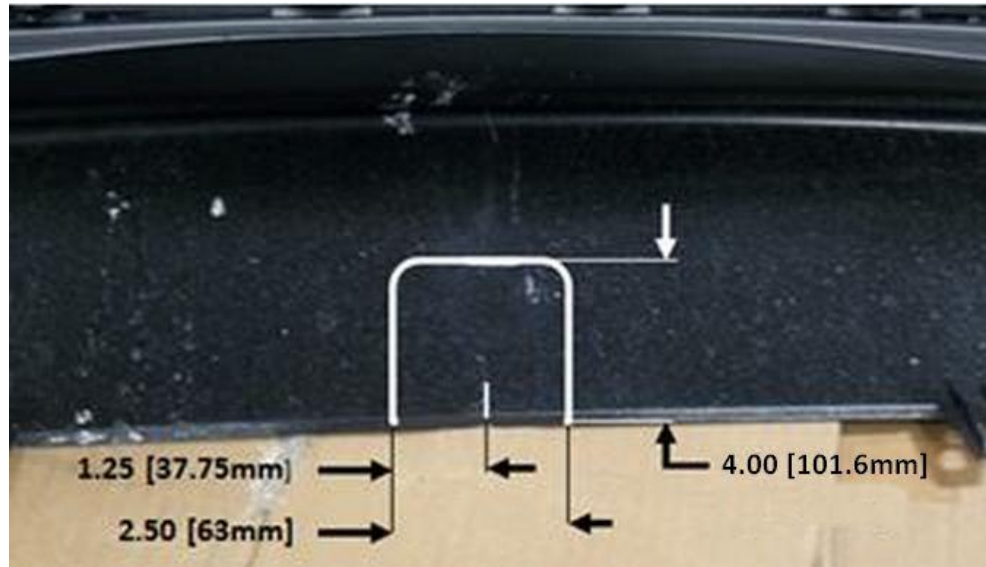
8. Tighten all M8 CL8.8 fasteners with torque wrench to 20 Lb.-Ft. (27 N*M).

⚠ Proper torque is needed to keep the hitch secure to the vehicle when towing.



9. Trim fascia: using the center of the fascia marked in step 1. 2.50 x 4.00 off center mark. Use drill to create radius. See Figure below.

Fascia trimming
2.50 X 4.00 cutout in fascia
required. Use drill to
create radius.



10. Reinstall fascia: starting from the center of the vehicle lineup and gently reinstall the rear fascia and all fasteners in reverse order steps 2-4. (Note: reattach any wiring harness if removed)



If you're looking for quality trailer hitches and towing, visit our website.