



Installation Instructions

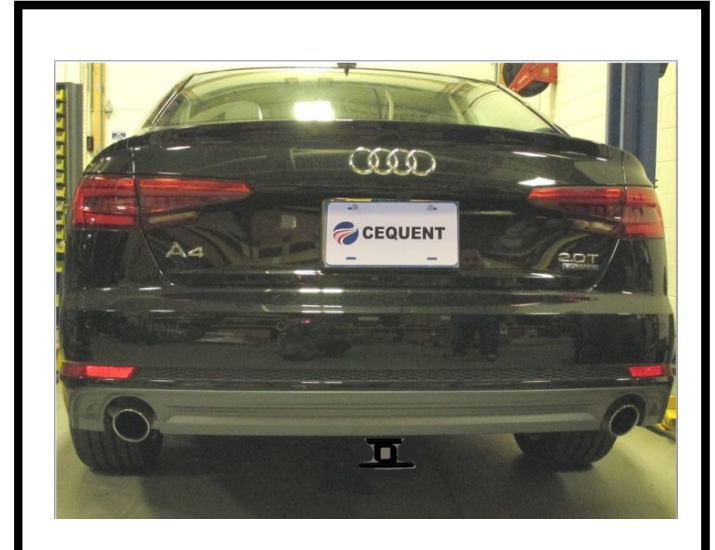
PART NUMBERS: 24950, 77950, CQT24950

Applications:

| Years | Make | Models |
|----------------|------|--------|
| 2009 -Current* | Audi | A4 |

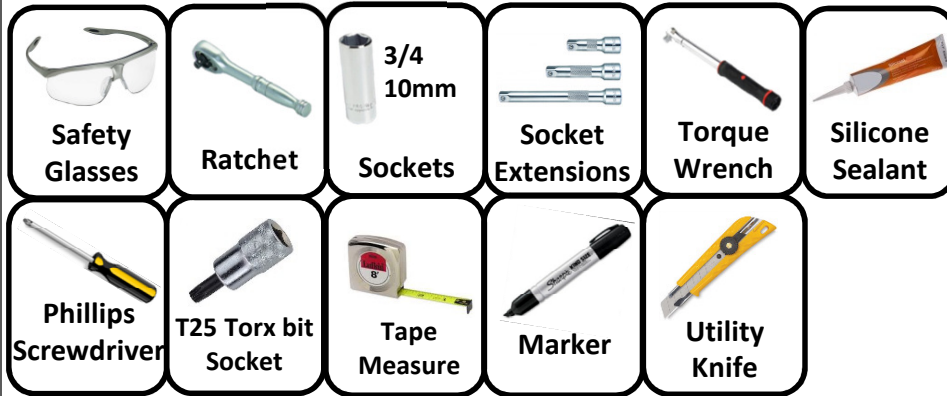
Installation Time: 25 min

The time listed above is the average time for professional installers. If you do not feel comfortable performing this installation on your own or are in need of assistance, please contact a professional installer.



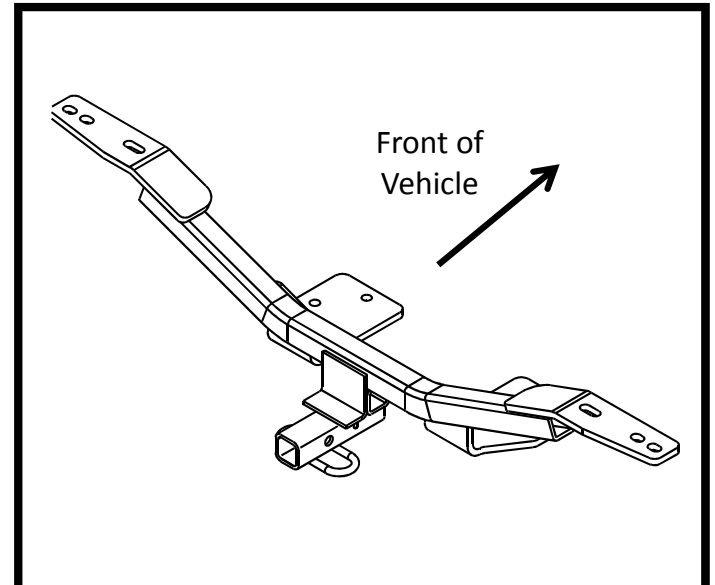
Representative Vehicle Photo

Equipment Required:



DO NOT EXCEED LOWER OF TOWING VEHICLE MANUFACTURER'S RATING OR:

| Hitch Type | Max Gross Trailer Weight | Max Tongue Weight |
|---------------------|--------------------------|-------------------|
| Weight Carrying | 2000 lb. (908 kg) | 200 lb. (90.8 kg) |
| Weight Distributing | X | X |



Hitch Illustration

Installation Instructions

PART NUMBERS: 24950, 77950, CQT24950

Authorized Drawbar Kit:
3593 (Sold Separately)
Drawbar must be used in the
RISE position only.



**Always wear SAFETY GLASSES
when installing hitch**

Centerline
Of Vehicle

Fastener Kit: 24950F

| ① | Qty. (4) | Carriage Bolt 1/2-13 X 4-1/2" GR5 | |
|---|----------|---------------------------------------|--|
| ② | Qty. (2) | Top Plate | |
| ③ | Qty. (4) | Hex Flanged Locknut 1/2-13 Grade G | |
| ④ | Qty. (2) | Carriage Bolt 1/2-13 X 1-3/4" GR5 | |
| ⑤ | Qty. (2) | Spacer block 1/2" x 1.50 x 3.00 | |
| ⑥ | Qty. (2) | Conical toothed washer 1/2" | |
| ⑦ | Qty. (2) | Hex Nut 1/2-13 Gr5 | |

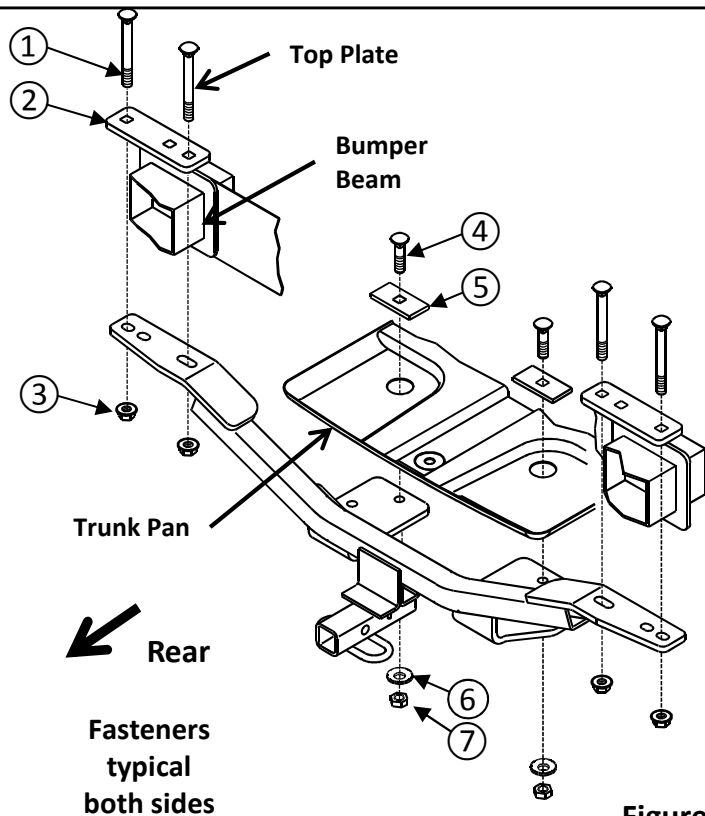


Figure 1

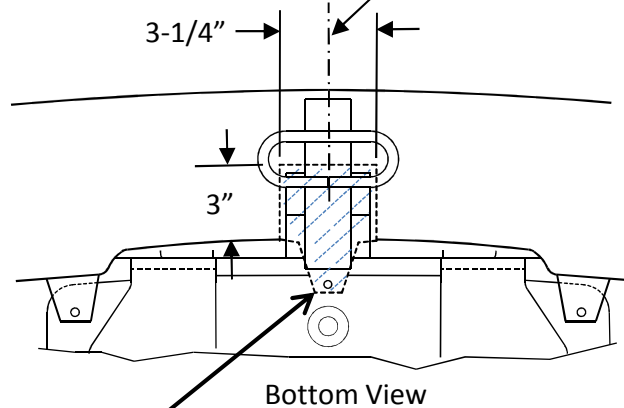


Figure 2

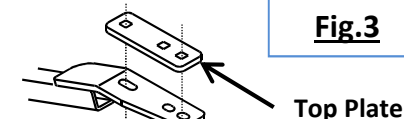


Fig.3

Bolt location for 2017-current models

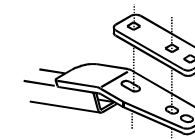


Fig.4

Bolt location for 2009 – 2016 models

2009 – 2016 models:

1. Using a T25 torx bit, remove (3) screws holding the bumper fascia to the bottom of the trunk pan.

2017 – current models:

1. Using a 10mm socket, remove (2) hex nuts holding the bumper fascia to the bottom of the trunk pan.

2. **Remove underbody panel** – If present (single exhaust models), using a 10mm socket remove (3) hex nuts and (1) push-type rivet and temporarily remove the underbody panel.

3. **Remove spare tire and jack tool kit** – remove spare tire and using a 10mm socket remove the jack tool kit from trunk.

4. **Remove drain plugs** – using a utility knife, carefully cut the caulking around the (2) rearmost drain plugs in trunk pan. Remove drain plugs and return to vehicle owner.

5. If present, temporarily move hands-free trunk release cable from fascia near area to be trimmed.

6. **Trim fascia** - using a tape measure, marker, and utility knife, cut a notch in the lower part of fascia, approximately 3-1/4" wide x 3" deep, centered on vehicle as shown in figure 2.

Note: Obtain vehicle owner's permission before trimming fascia.

7. **Install top plates and fasteners** – gently pull fascia down and install Top Plates with 4-1/2" long carriage bolts on top of bumper beam extensions.

NOTE: The bolt location varies by model year – See figures 3 and 4 for correct top plate bolt location.

8. **Hitch installation** - raise hitch into position aligning slots in hitch with carriage bolts and loosely install the (4) flanged locknuts onto carriage bolts.

9. **Seal drain holes** – using silicone caulk, seal around drain holes from inside trunk pan to prevent intrusion of water and exhaust fumes.

10. **Install fasteners** – install (2) 1-3/4" long carriage bolts and spacer blocks from inside the trunk pan and through holes in hitch. Loosely install the (2) conical toothed washers and hex nuts.

11. **Tighten all 4-1/2" long Gr5 carriage bolts with torque wrench to 50 Lb.-Ft. (68 N*M)**

12. **Tighten all 1-3/4" long Gr5 carriage bolts with torque wrench to 75 Lb.-Ft. (102 N*M)** **▲ Proper torque is needed to keep the hitch secure to the vehicle when towing.**

13. Reinstall hands-free trunk release cable between hitch bracket and trunk pan.

14. Reinstall the underbody panel (if equipped).

15. Reinstall (2) screws or (2) hex nuts (depending on model year) to reattach the fascia to the trunk pan.

16. Reinstall jack tool kit and spare tire into trunk.

Note: check hitch frequently, making sure all fasteners and ball are properly tightened. If hitch is removed, plug all holes in trunk pan or other body panels to prevent entry of water and exhaust fumes. A hitch or ball which has been damaged should be removed and replaced. Observe safety precautions when working beneath a vehicle and wear eye protection. Do not cut access or attachment holes with a torch. This product complies with safety specifications and requirements for connecting devices and towing systems of the state of New York, V.E.S.C. Regulation V-5 and SAE J684.

2009 – 2016 models:

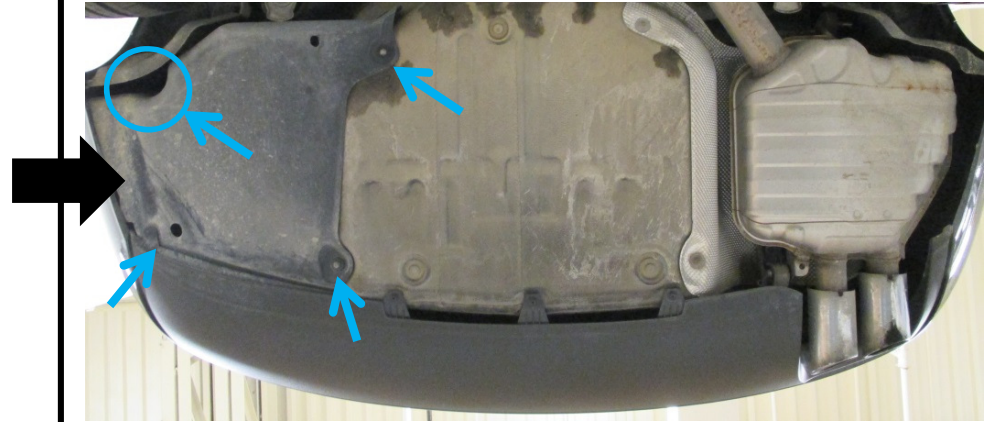
1. Using a T25 torx bit, remove (3) screws holding the bumper fascia to the bottom of the trunk pan.

2017 – current models:

1. Using a 10mm socket, remove (2) hex nuts holding the bumper fascia to the bottom of the trunk pan.



2. **Remove underbody panel** – If present (single exhaust models), using a 10mm socket remove (3) hex nuts and (1) push-type rivet and temporarily remove the underbody panel.



3. **Remove spare tire and jack tool kit** – remove spare tire and using a 10mm socket remove the jack and tool kit from trunk.

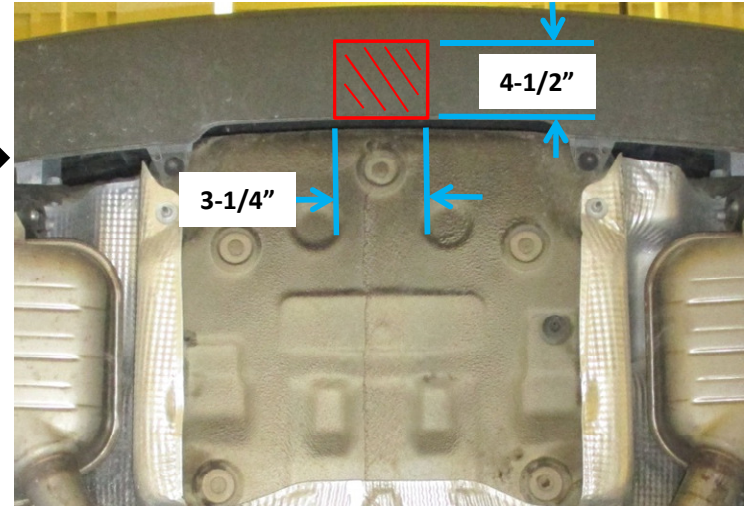


4. **Remove drain plugs** – using a utility knife, carefully cut the caulking around the (2) rearmost drain plugs in trunk pan. Remove drain plugs and return to vehicle owner.



5. If present, temporarily move hands-free trunk release cable from fascia near area to be trimmed.
 6. **Trim fascia** - using a tape measure, marker, and utility knife, cut a notch in the lower part of fascia, approximately 3-1/4" wide x 3" deep, centered on vehicle as shown in figure 2.

Note: Obtain vehicle owner's permission before trimming fascia.



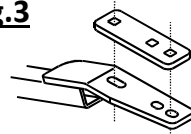
7. **Install top plates and fasteners** – gently pull fascia down and install Top Plates with 4-1/2" long carriage bolts on top of bumper beam extensions.

NOTE: The bolt location varies by model year .

See figures 3 and 4 for correct top plate bolt location.

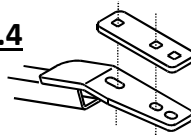


Fig.3



2017-current models

Fig.4

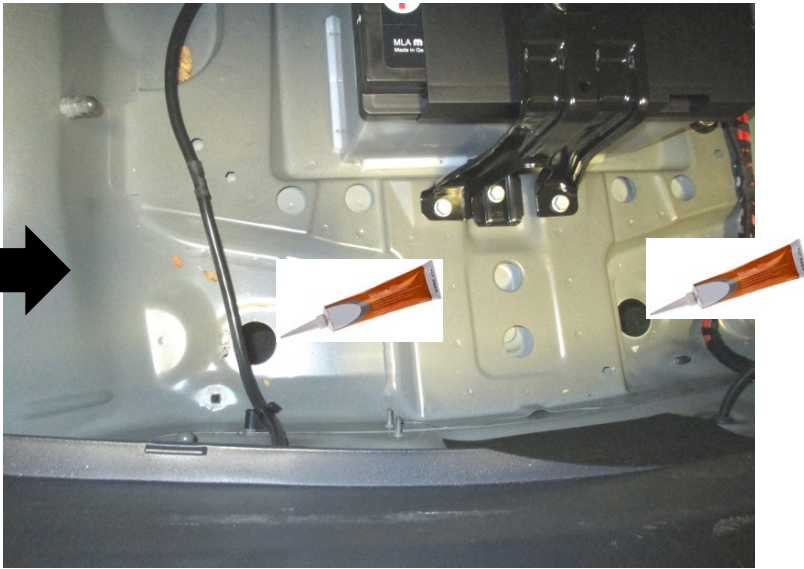


2009 – 2016 models

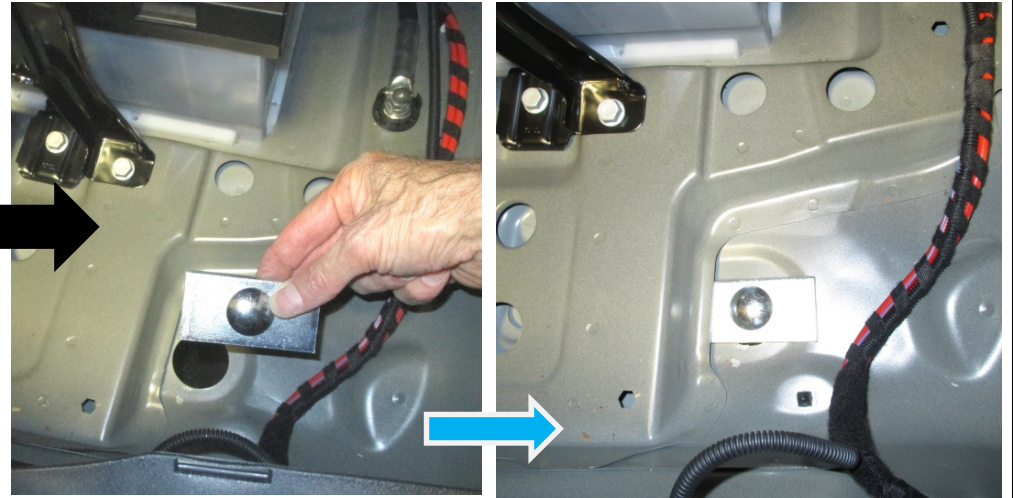
8. **Hitch installation** - raise hitch into position aligning slots in hitch with carriage bolts and loosely install the (4) flanged locknuts onto carriage bolts, (2) per side.



9. Seal drain holes – using silicone caulk, seal around drain holes from inside trunk pan to prevent intrusion of water and exhaust fumes.



10. Install fasteners – install (2) 1-3/4" long carriage bolts and spacer blocks from inside the trunk pan and through holes in hitch. Loosely install the (2) conical toothed washers and hex nuts.



11. Tighten all 4-1/2" long Gr5 carriage bolts with torque wrench to 50 Lb.-Ft. (68 N*M)

12. Tighten all 1-3/4" long Gr5 carriage bolts with torque wrench to 75 Lb.-Ft. (102 N*M)

⚠ Proper torque is needed to keep the hitch secure to the vehicle when towing.



13. Reinstall hands-free trunk release cable between hitch bracket and trunk pan.
14. Reinstall the underbody panel (if equipped).
15. Reinstall (2) screws or (2) hex nuts (depending on model year) to reattach the fascia to the trunk pan.
16. Reinstall jack, tool kit and spare tire into trunk.



Check out a selection of trailer hitches and towing offered in our online store.