



# Installation Instructions

PART NUMBERS: 24949, 77949, CQT24949

## Applications:

Years	Make	Models
2015-Current*	Volkswagen	Golf Sportwagen

## Installation Time: 60 Min.

The time listed above is the average time for professional installers. If you do not feel comfortable performing this installation on your own or are in need of assistance, please contact a professional installer.



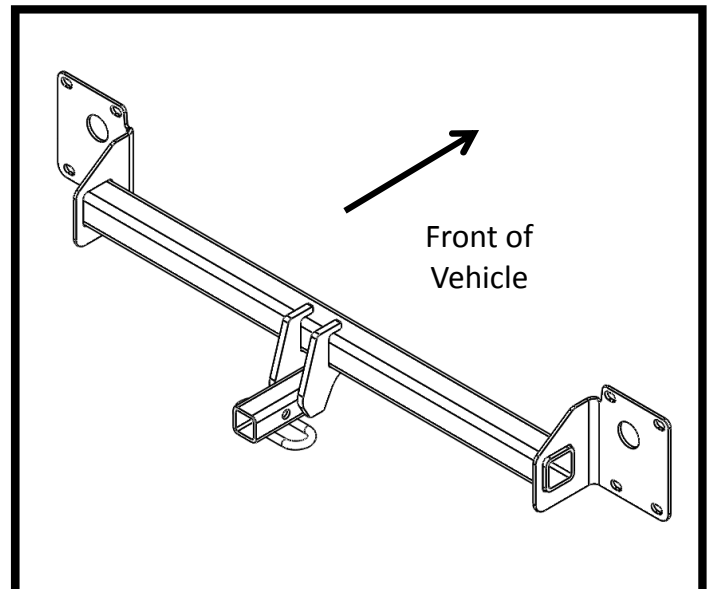
Representative Vehicle Photo

## Equipment Required:

Safety Glasses	Ratchet	T15, T20 Torxbit Socket	Flat Head Screw Driver	Pliers	Hammer	6" Socket Extension
10 mm 13 mm Sockets	Torque Wrench	Plastic Trim Tools	Marker or tape	Tape Measure	Utility Knife OR Die Grinder	

## DO NOT EXCEED LOWER OF TOWING VEHICLE MANUFACTURER'S RATING OR:

Hitch Type	Max Gross Trailer Weight	Max Tongue Weight
Weight Carrying	2000 lb. (908 kg)	200 lb. (90 kg)
Weight Distributing	X	X





Hitch Illustration

**Always wear SAFETY GLASSES when installing hitch**

# Installation Instructions

## PART NUMBERS: 24949, 77949, CQT24949

### Fastener Kit : 24949F

①	Qty. (7)	Bolt M8x1.25x30 CL8.8	
②	Qty. (7)	Conical washer 3/8"	



(Conical Washer)  
**Teeth side  
against hitch**

**Authorized Drawbar Kit:**  
**3590** (Sold Separately)  
Drawbar must be used in the  
**RISE** position only

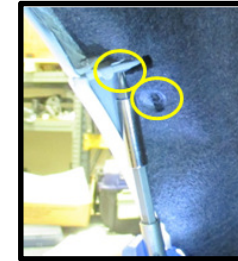
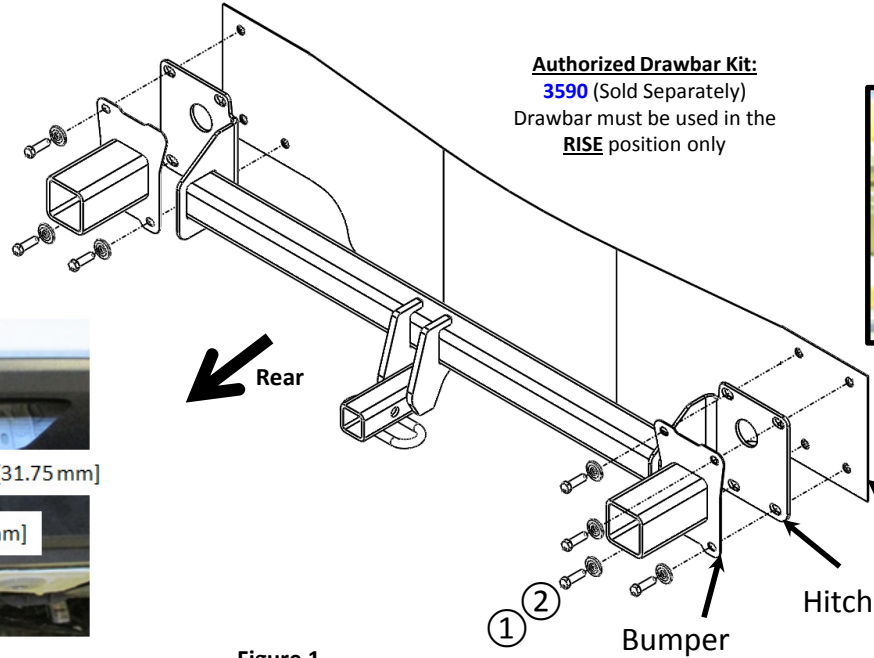


Figure 2



Figure 3

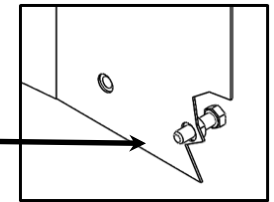


Figure 4

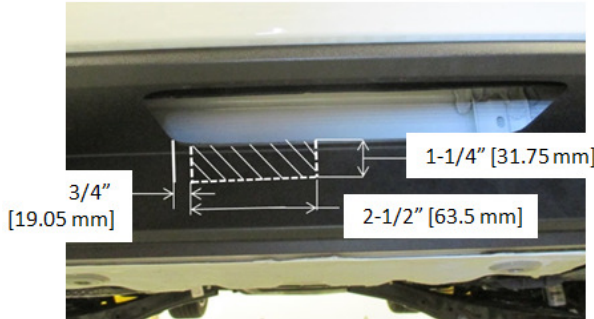


Figure 5

Figure 1

Complete vehicle bumper not shown for clarity

- Remove tail lights:** Open tailgate and remove panels (each side) to gain access to tail light wiring. Disconnect wiring to tail lights (push red connector to disconnect). Remove plastic retaining screw (use pliers if needed) (1) each side. Stand to the side of the vehicle, holding on to tail light push rearward to remove. Both sides. Secure in safe location.
- Remove appearance panel:** Loosen (2) plastic bolts (M10 socket) attached to spare tire well. Remove (4) screws (T20) holding appearance panel in place. Remove and save for reinstallation.
- Remove bolts from wheel well and fascia:** Remove (4) plastic screws (T15) from rear under side of fascia and plastic retaining blocks (pop out with flat screw driver). Remove (4) screws (T20) (each side) from wheel well, (3) facing the rear and (1) located at top between rear and side panels. See figure 2.
- Remove rear fascia:** Gently pull up from the rear wheel well panel each side, unclipping the tabs inside. Work up to taillights and continue to gently remove along plastic tail light support. Using a small screwdriver or trim tool push down on cleats between the fascia and tail lights as needed. Continue to remove along inside bottom to the trunk, lifting fascia up from bottom as needed. Carefully pulling the fascia away from the vehicle. Use care at lower part of wheel well there are (2) fixed pins, carefully work fascia over pins (see figure 3a). If present disconnect any wiring harness or sensor from fascia. Both sides. Note: Use trim tool or screwdriver near corner – tight fit. See figure 3.
- Remove bumper:** Remove bumper (7) bolts (M13 socket and socket extension), lift up as needed to remove bumper. Remove and save for reinstallation.
- Optional - Bolts for support:** Run (1) bolt (item 1) through the existing weld nut from forward side of end panel. Use bolt for ease of installation. Both sides. See figure 4.
- Install hitch and bumper:** Lift hitch into position, resting on bolt installed in step 6. Raise bumper into position over hitch and install bolts (item 1) and conical washer (item 2) as shown in figure 1. Once the hitch is secured with several fasteners to support it, remove the bolt used in step 6 and install properly. Center hitch on vehicle and tighten. If tab on bumper interferes with installation it may be necessary to use a hammer to bend tab on bumper flush with bumper.
- Tighten all M8 CL8.8 fasteners with torque wrench to 20 Lb.-Ft. (27 N\*M).**

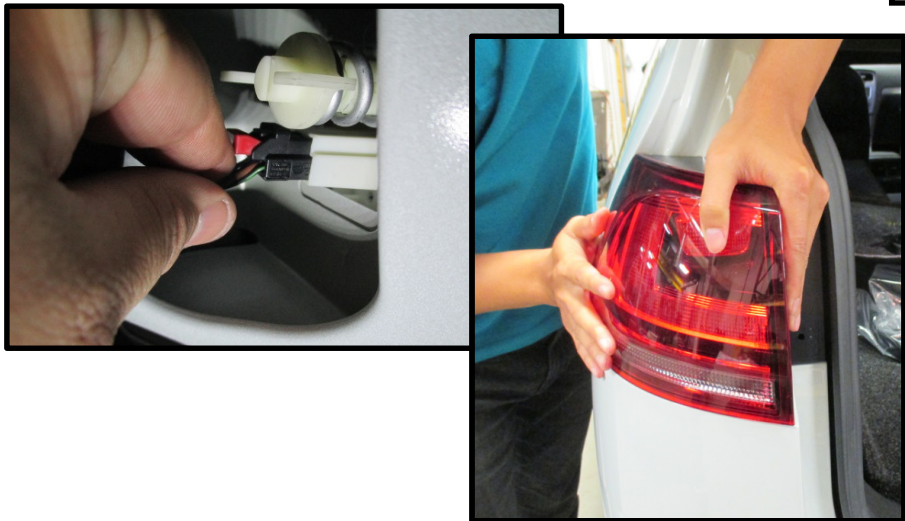
**Proper torque is needed to keep the hitch secure to the vehicle when towing.**

- Trim fascia:** From edge of fascia opening, measure and mark 3/4" [19.05mm] over. Measure over 2-1/2" [63.5 mm] down 1-1/4" [31.75 mm]. Carefully trim, fascia as shown in figure 5.
- Reinstall fascia:** Lift fascia over receiver tube being careful not to scratch fascia. Starting from the center of the vehicle lineup and gently reinstall the rear fascia and all fasteners in reverse order steps 1-4. (Note: reattach any wiring harness if removed)

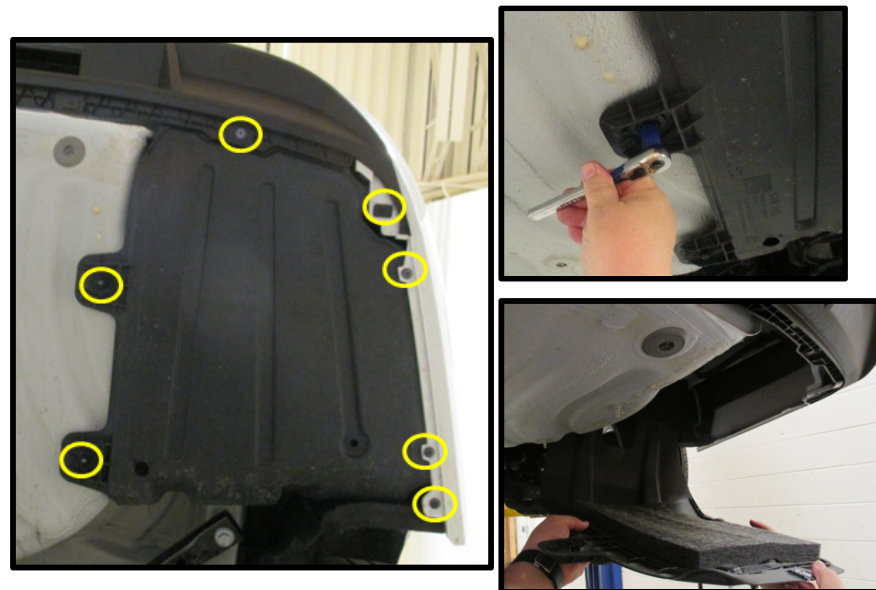
Note: check hitch frequently, making sure all fasteners and ball are properly tightened. If hitch is removed, plug all holes in trunk pan or other body panels to prevent entry of water and exhaust fumes. A hitch or ball which has been damaged should be removed and replaced. Observe safety precautions when working beneath a vehicle and wear eye protection. Do not cut access or attachment holes with a torch.

This product complies with safety specifications and requirements for connecting devices and towing systems of the state of New York, V.E.S.C. Regulation V-5 and SAE J684.

**1. Remove tail lights:** Open tailgate and remove panels (each side) to gain access to tail light wiring. Disconnect wiring to tail lights (push red connector to disconnect). Remove plastic retaining screw (use pliers if needed) (1) each side. Stand to side holding on to tail light push rearward to remove. Both sides. Secure in safe location.



**2. Remove appearance panel:** Loosen (2) plastic bolts (M10 socket) attached to spare tire well. Remove (4) screws (T20) holding appearance panel in place. Remove and save for reinstallation.



**3. Remove bolts from wheel well and fascia:** Remove (4) plastic screws (T15) from rear under side of fascia and plastic retaining blocks (pop out with flat screw driver). Remove (4) screws (T20) (each side) wheel well, (3) facing the rear and (1) located at top between rear and side panels. See figure 2.

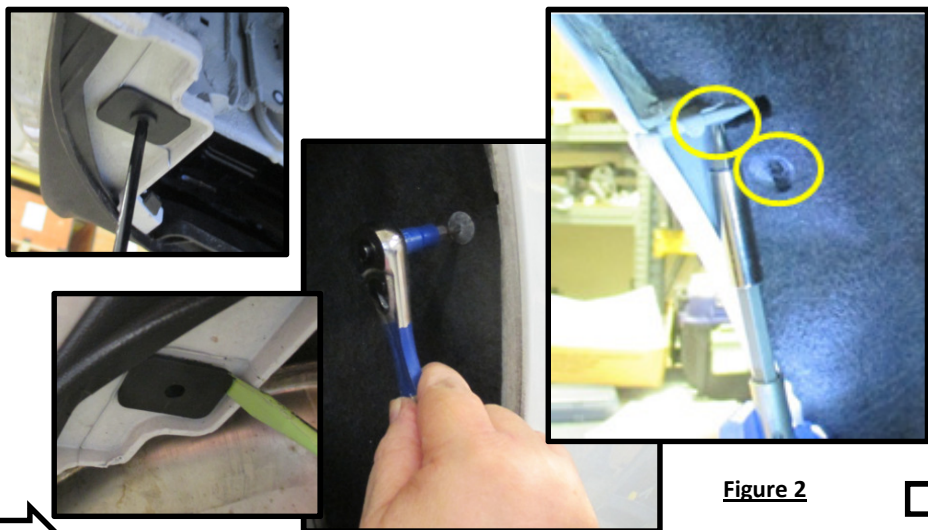


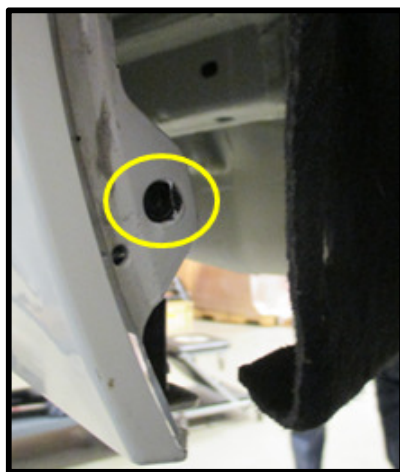
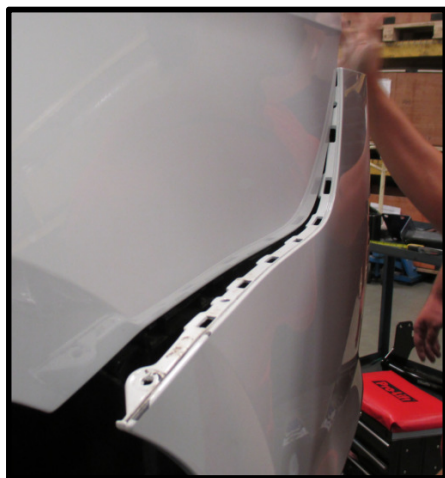
Figure 2

**4a. Remove rear fascia:** Gently pull up from the rear wheel well panel each side, unclipping the tabs inside. Work up to taillights and continue to gently remove along plastic tail light support. Using a small screwdriver or trim tool push down on cleats between the fascia and tail lights as needed. Continue to remove along inside bottom to the trunk, lifting fascia up from bottom as needed.

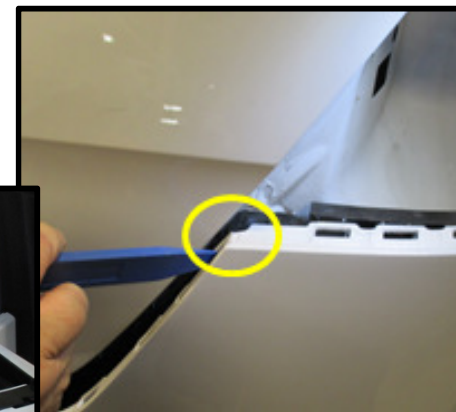




**4b. Remove rear fascia:** Carefully pulling the fascia away from the vehicle. Use care at lower part of wheel well there are (2) fixed pins (see figure 3a), carefully work fascia over pins. If present disconnect any wiring harness or sensor from fascia. Both sides. Note: Use trim tool or screwdriver near corner – tight fit. See figure 3.

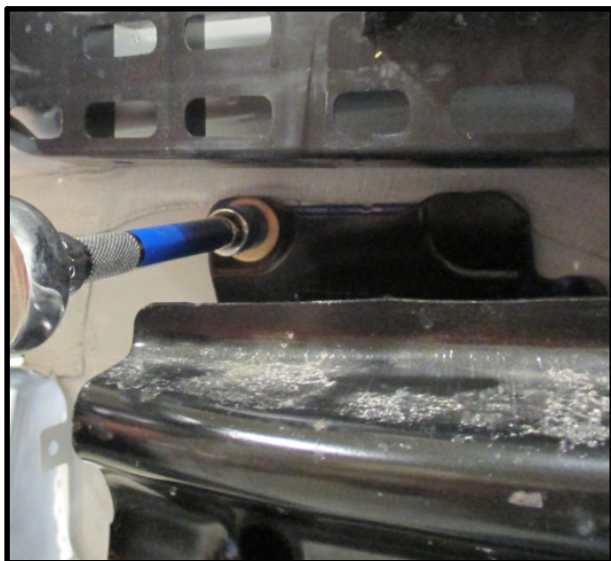


**Figure 3a**

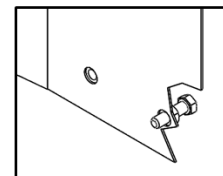


**Figure 3**

**5. Remove bumper:** Remove bumper (7) bolts (M13 socket and socket extension), lift up as needed to remove bumper. Remove and save for reinstallation.



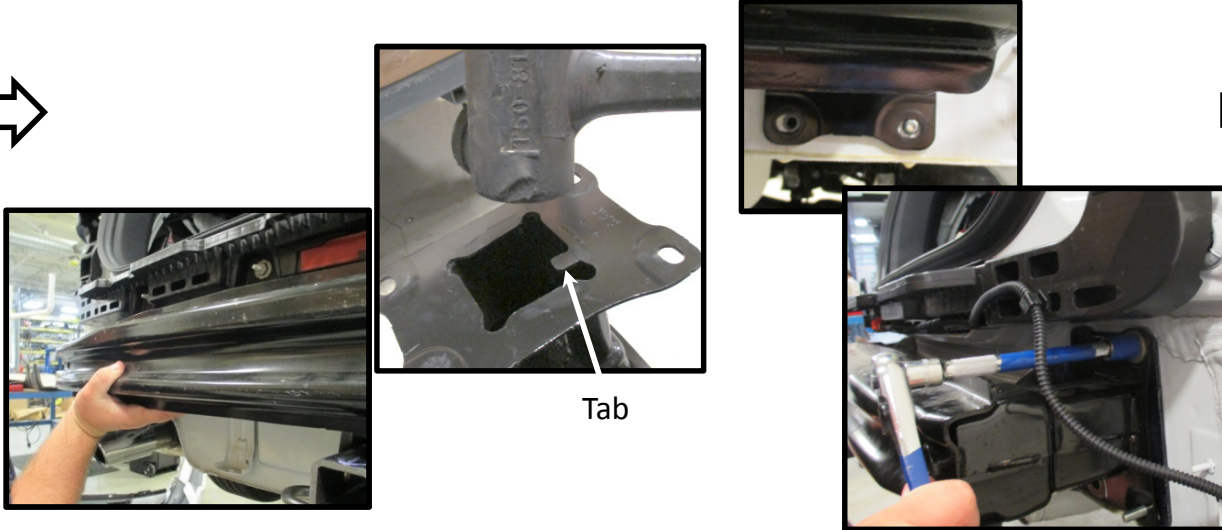
**6. Optional - Bolts for support:** Run (1) bolt (item 1) through the existing weld nut from forward side of end panel. Use bolt for ease of installation. Both sides. See figure 4.



**Figure 4**

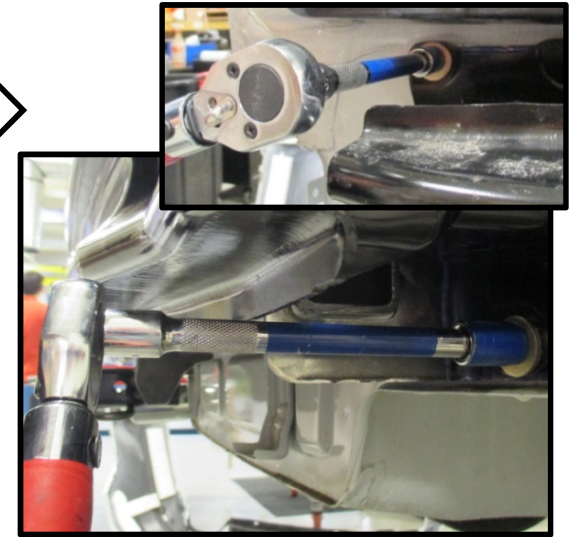


**7. Install hitch and bumper:** Lift hitch into position, resting on bolt installed in step 6. Raise bumper into position over hitch and install bolts (item 1) and conical washer (item 2) as shown in figure 1. Once the hitch is secured with several fasteners to support it, remove the bolt used in step 6 and install properly. Center hitch on vehicle and tighten. If tab on bumper interferes with installation it may be necessary to use a hammer to bend tab on bumper flush with bumper.

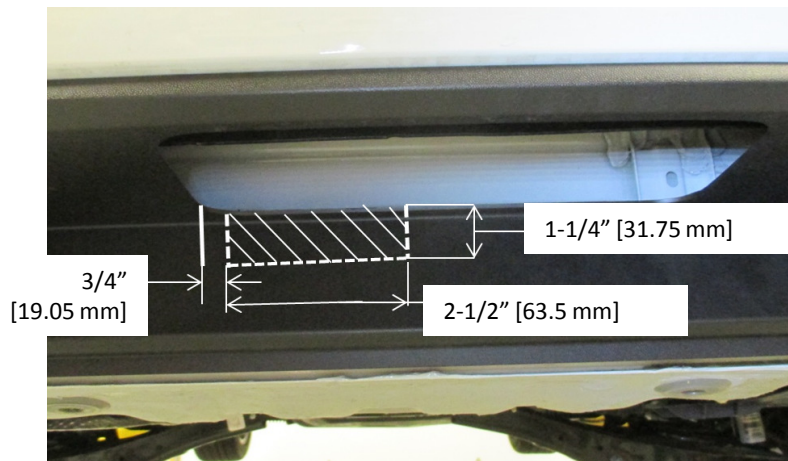


**8. Tighten all M8 CL8.8 fasteners with torque wrench to 20 Lb.-Ft. (27 N\*M).**

**⚠ Proper torque is needed to keep the hitch secure to the vehicle when towing.**



**9. Trim fascia:** From edge of fascia opening, measure and mark 3/4" [19.05mm] over. Measure over 2-1/2" [63.5 mm] down 1-1/4" [31.75 mm] . Carefully trim, fascia as shown in figure 5.



**Figure 5**

**10. Reinstall fascia:** Lift fascia over receiver tube being careful not to scratch fascia. Starting from the center of the vehicle lineup and gently reinstall the rear fascia and all fasteners in reverse order steps 1-4. (Note: reattach any wiring harness if removed)



Check out a selection of trailer hitches and towing offered in our online store.