



## MIRROR GLASS ASSEMBLY INSTALLATION GUIDE

Mirror Glass Assembly replacement is possible without removing the mirror housing from the vehicle.

### REQUIRED TOOLS

- Masking Tape
- Small Slotted Screwdriver or Small Pry Tool
- Sturdy Gloves
- Safety Glasses

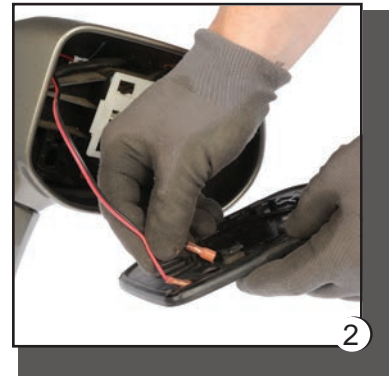
**CAUTION:** Always wear Safety Glasses and Sturdy Gloves when working with any mirror glass.

**NOTE:** It is important to review your Plastic-Backed Mirror Glass Assembly prior to beginning any installation ~ Specific tab or mount locations can vary by product.



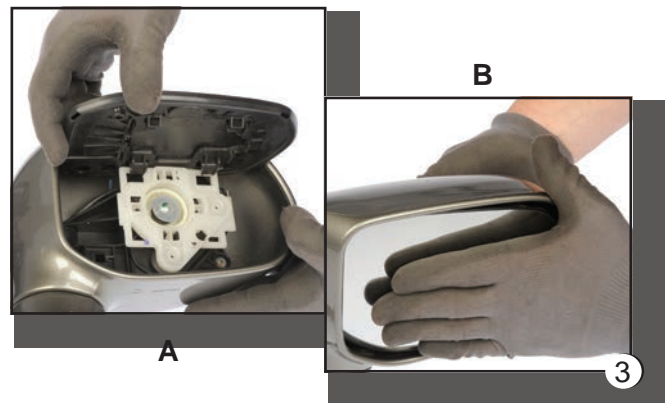
**Fig. 1. Removing the broken mirror glass assembly from the current housing.**

- Apply masking tape across old glass surface to protect from breaking glass during removal process.
- Push on the top edge of the old mirror to manually pivot the bottom fully outward.
- Insert a small pry bar or flat screwdriver in between the mirror mount and the back plate.
- Carefully pry until the top of the old mirror is dislodged from the mirror housing.
- If applicable, disconnect all wire connections behind old mirror and remove it from mirror housing.



**Fig. 2. Reconnecting the mirror glass assembly.**

- If vehicle has a heated mirror, connect the wires to the heater terminals.



**Fig. 3 A-B. Installing your new mirror glass assembly.**

- Tuck all wiring harnesses behind motor actuator.
- Place and align the mirror motor mount tabs in the upper slots of the motor mount. (Image A)
- While wearing a glove and with upper tabs aligned, close up the mirror glass assembly and press firmly until you hear the lower snaps engage onto the motor mount. (Image B)

**Note:** Mirror should be pivoted through its full range of travel to ensure it is properly seated on the motor mount.

### CAUTION:

- The pressure should be applied in the location of the motor behind the glass
- Do not press using your fingers as this will cause mirror distortion
- All pressure should be uniformly distributed over the glass and away from the mirror perimeter to avoid damaging/breaking the new mirror