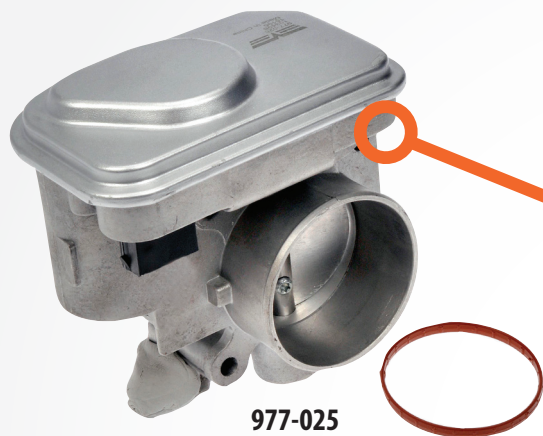
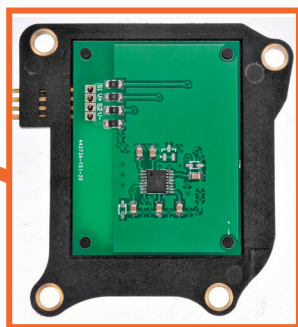


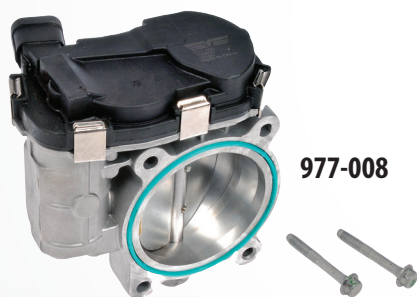
11 PART NUMBERS COVERING OVER 9 MILLION VIO



977-025



- OE FIX Throttle bodies feature new non-moving Hall-Effect sensor with increased reliability
- Aluminum casting construction for an exact fit, performance match and corrosion-resistance
- Direct replacement for bolt-on and plug-in installation
- 100% new, not remanufactured
- New gasket included (*where applicable*)



977-008



OE PROBLEM:

Original unit often requires replacement due to sensor failure and excessive wear and tear.



Completely redesigned circuit board eliminates carbon track wear associated with original unit.

Dorman #	Applications
977-008 	Buick 2011-09, Buick 2007-06, Chevrolet 2011-06, Pontiac 2010-06, Saturn 2009-06
977-014 	GM 2008-06, Isuzu 2006-05, Saab 2008-05
977-025 	Chrysler 2014-07, Dodge 2015-07, Jeep 2015-07
977-300	Ford 2016-09, Lincoln 2016-11, Mercury 2011-09
977-320	Nissan 2015-14
977-321	Nissan Frontier 2015-13
977-322	Infiniti FX50 2013-09, Infiniti M56 2013-11, Infiniti Q70 2015-14, Infiniti QX70 2015-14
977-323	Infiniti QX56 2010-04, Nissan Armada 2015, Nissan NV2500 2015, Nissan NV3500 2015, Nissan Titan 2015
977-324	Infiniti QX56 2013-11, Infiniti QX80 2015-14
977-325	Nissan Altima 2015-12, Nissan NP300 2015-14, Nissan Rogue 2015-14, Nissan Rogue Select 2015-14
977-326	Infiniti QX60 2015-14, Nissan Pathfinder 2014