

# INSTALL/REMOVAL INSTRUCTIONS: AIR SUSPENSION CONVERSION KIT

**ATTENTION:** Refer to the appropriate shop manual for your vehicle to obtain specific service procedures for this part. If you do not have a service manual or lack the skill to install this part, it is recommended that you seek the services of a qualified technician. Pay special attention to all cautions and warnings included in the shop manual. Read and follow all instructions carefully.

## **Air Suspension Conversion Kit General Installation Instructions**

When servicing any vehicle be sure to follow all safety procedures. First, make sure that when lifting the vehicle that you use an appropriate jack with a proper weight rating. Before going underneath any vehicle, make sure that it is properly supported with sturdy jack stands and on level ground so that the vehicle doesn't fall or slide off of the jack and onto you. As with any automotive repair, make sure you have the appropriate tools to do the job so you don't damage any parts on the vehicle. Safety glasses and mechanic's gloves should also be worn for your protection.

Take care not to exceed the Gross Vehicle Weight Rating (GVWR), or the maximum load recommended by the manufacturer. It is important that all the vehicle owner manuals recommendations are followed for your own safety and to prevent damage to the vehicle.

Once you are ready to disable the ride light, you will need to disconnect the negative battery cable (-) to prevent electrical shock/malfunction.

### Disclaimer:

Even though every attempt is made to ensure this information is complete and accurate, it is impossible to account for all possible circumstances or situations. Please consult with a qualified auto technician before attempting to perform any work you are not qualified to do. Automobiles can be hazardous to work on; be sure to take all necessary safety precautions. Failure to do so may result in property damage or personal injury. Certain motor vehicle standards and performance requirements may apply to your motor vehicle (such as Federal Motor Vehicle Safety Standards by the National Highway Traffic Safety Administration). Be sure that your work is performed in accordance with such standards and that you do not disable any motor vehicle safety feature.

**ATTENTION:** Refer to the appropriate shop manual for your vehicle to obtain specific service procedures for this part. If you do not have a service manual or lack the skill to install this part, it is recommended that you seek the services of a qualified technician. Pay special attention to all cautions and warnings included in the shop manual. Read and follow all instructions carefully.

## **Installation Instructions**

### **Cadillac Eldorado 1994 - 1995**

### **Cadillac Seville 1993**

### **Front**



## **Tools needed for installation**

- Metric socket set
- Floor jack
- Jack stands
- Metric wrenches
- Screwdrivers (Phillips and flat head)
- Wire cutter/stripper/crimping tool
- Spring compressor (if applicable)
- Allen wrenches

#### **Disclaimer:**

Even though every attempt is made to ensure this information is complete and accurate, it is impossible to account for all possible circumstances or situations. Please consult with a qualified auto technician before attempting to perform any work you are not qualified to do. Automobiles can be hazardous to work on; be sure to take all necessary safety precautions. Failure to do so may result in property damage or personal injury. Certain motor vehicle standards and performance requirements may apply to your motor vehicle (such as Federal Motor Vehicle Safety Standards by the National Highway Traffic Safety Administration). Be sure that your work is performed in accordance with such standards and that you do not disable any motor vehicle safety feature.

**ATTENTION:** Refer to the appropriate shop manual for your vehicle to obtain specific service procedures for this part. If you do not have a service manual or lack the skill to install this part, it is recommended that you seek the services of a qualified technician. Pay special attention to all cautions and warnings included in the shop manual. Read and follow all instructions carefully.

## Cadillac Suspension Warning Light Disarming Check List

- Remove negative cable from battery before installing kit.
- Follow kit installation instructions ensuring all steps have been successfully completed.
- Install electronic components as instructed.
- Ensure height sensors remain plugged in.
- Reattach battery cable.
- Clear all present & past OBD codes. See owner's manual about clearing codes, this process may require a scan tool.
- If installing a rear kit, pull the compressor fuse (30 to 50 amp) located in the engine or trunk compartments.

Disclaimer:

Even though every attempt is made to ensure this information is complete and accurate, it is impossible to account for all possible circumstances or situations. Please consult with a qualified auto technician before attempting to perform any work you are not qualified to do. Automobiles can be hazardous to work on; be sure to take all necessary safety precautions. Failure to do so may result in property damage or personal injury. Certain motor vehicle standards and performance requirements may apply to your motor vehicle (such as Federal Motor Vehicle Safety Standards by the National Highway Traffic Safety Administration). Be sure that your work is performed in accordance with such standards and that you do not disable any motor vehicle safety feature.

**ATTENTION:** Refer to the appropriate shop manual for your vehicle to obtain specific service procedures for this part. If you do not have a service manual or lack the skill to install this part, it is recommended that you seek the services of a qualified technician. Pay special attention to all cautions and warnings included in the shop manual. Read and follow all instructions carefully.

## Cadillac Eldorado 1994 - 1995

## Cadillac Seville 1993

### Front Installation Instructions

#### Front Removal Instructions

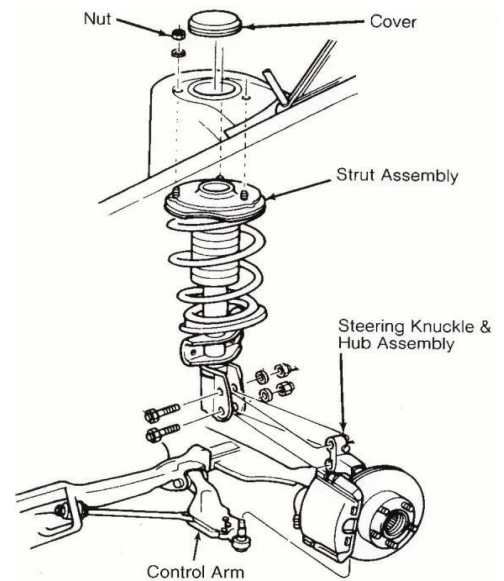
1. Raise and support vehicle, allowing suspension to hang free. Remove wheels.

**Note:** Whenever working near the drive axles, care must be taken to prevent inner tri-pot joints from being overextended. Overextension of the joint could result in separation of internal components which could go undetected and result in failure of the joint. Care should be taken to avoid scratching or cracking the spring coating when handling the front suspension coil spring. Damage can cause premature failure.

2. Remove (3) 15mm nuts securing strut mount to body (Do not remove large 24mm nut on top of strut shaft).

3. Disconnect link rod at lower control arm for road sensing suspension (if equipped). Mark strut in relation to steering knuckle for installation. (On some models the lower strut to steering knuckle bolt serves as the Camber (alignment) set point). (See Fig. 1)

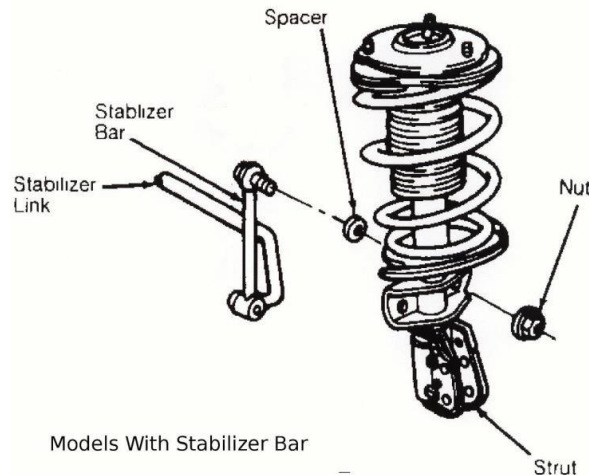
Fig. 1



4. Remove brake line bracket from strut.

5. Remove the stabilizer link from the strut (if equipped). (See Fig. 2)

Fig. 2



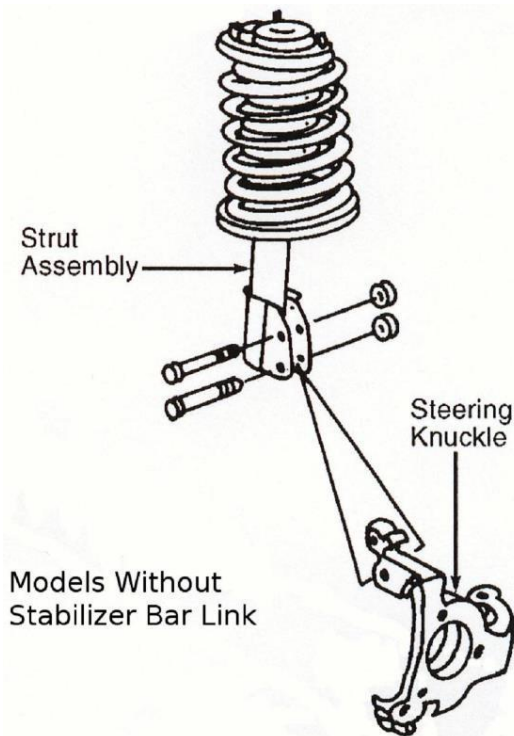
#### Disclaimer:

Even though every attempt is made to ensure this information is complete and accurate, it is impossible to account for all possible circumstances or situations. Please consult with a qualified auto technician before attempting to perform any work you are not qualified to do. Automobiles can be hazardous to work on; be sure to take all necessary safety precautions. Failure to do so may result in property damage or personal injury. Certain motor vehicle standards and performance requirements may apply to your motor vehicle (such as Federal Motor Vehicle Safety Standards by the National Highway Traffic Safety Administration). Be sure that your work is performed in accordance with such standards and that you do not disable any motor vehicle safety feature.

**ATTENTION:** Refer to the appropriate shop manual for your vehicle to obtain specific service procedures for this part. If you do not have a service manual or lack the skill to install this part, it is recommended that you seek the services of a qualified technician. Pay special attention to all cautions and warnings included in the shop manual. Read and follow all instructions carefully.

6. Remove nuts and bolts securing strut to steering knuckle. Support steering knuckle with mechanic's wire to prevent inner shaft joint separation. (See Fig. 3)

Fig. 3



7. Remove the strut assembly from the vehicle.

### Front Installation Instructions

Read instructions carefully before attempting installation. If there are any problems during the installation, call our Technical Support Line.

1. Reassemble and install, in reverse order of removal.
2. Tighten all mounting hardware to the manufacturer's torque specifications. (Replace any suspect hardware)

**Shim Blocks -** If the vehicle model has tapered shafts on the stabilizer links, use the included shim block on the strut wing bracket. Install the shim blocks opposite of the stabilizer link arm (Inside the channel on the strut) and tighten the link bolt securely.

Read instructions carefully before attempting installation. If there are any problems during the installation, call our Technical Support Line.

Use the following instructions to disable the suspension warning light:

- Disconnect the negative cable from the battery.
- Locate the vehicle's control module located in the trunk behind the trim panel.
- Use the diagrams and instructions to identify the correct wires and locations that will be used before cutting any wires.
- Install the relay per the instructions assuring that all connections are correct.
- Reconnect the negative battery cable and confirm that the suspension warning light is not illuminated.

Disclaimer:

Even though every attempt is made to ensure this information is complete and accurate, it is impossible to account for all possible circumstances or situations. Please consult with a qualified auto technician before attempting to perform any work you are not qualified to do. Automobiles can be hazardous to work on; be sure to take all necessary safety precautions. Failure to do so may result in property damage or personal injury. Certain motor vehicle standards and performance requirements may apply to your motor vehicle (such as Federal Motor Vehicle Safety Standards by the National Highway Traffic Safety Administration). Be sure that your work is performed in accordance with such standards and that you do not disable any motor vehicle safety feature.

**ATTENTION:** Refer to the appropriate shop manual for your vehicle to obtain specific service procedures for this part. If you do not have a service manual or lack the skill to install this part, it is recommended that you seek the services of a qualified technician. Pay special attention to all cautions and warnings included in the shop manual. Read and follow all instructions carefully.

**Note:** If the suspension light is still illuminated, recheck all connections made at the vehicle's control module. Also, check and clear all OBD diagnostic codes and test drive the vehicle. If the suspension warning light remains illuminated, there is a fault with one of the vehicle's height sensors or possibly the control module itself.

## Air Suspension Light Disarm Instructions

Read instructions carefully before attempting installation. If there are problems during the install, call our Technical Support Line.

### 1993 Eldorado and Seville with Speed Sensitive (SSS)

- Locate and cut circuit 1020 (Pink)
- Attach the IPC side of circuit 1020 to pin 4 (87A) of the relay
- Attach the module side of the circuit 1020 to pin 1 (86) of the relay
- Run a ground wire to relay pin 3 (30)
- Run a wire from switched ignition (hot in run) source to relay pin 2 (85)

### 1994 - 1995 Deville with Speed Suspension (SSS)

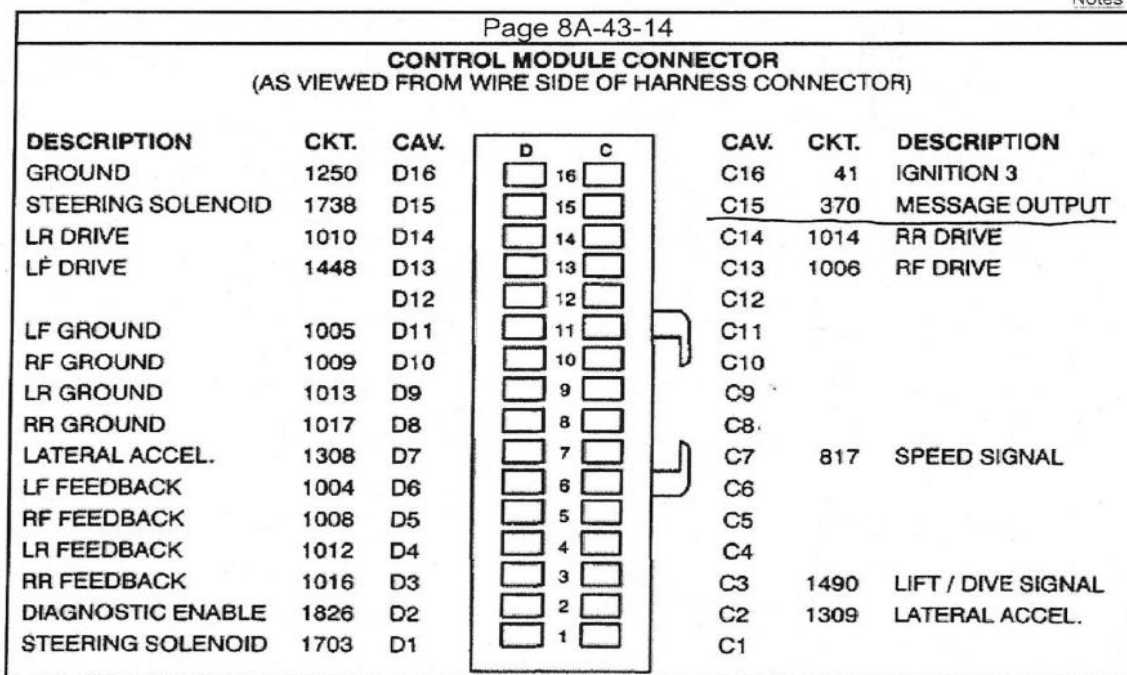
On the suspension control module located in the trunk under the front trim panel

- Locate and cut circuit 370 (RED)
- Attach control module circuit 370 to pin 1 (86) of the relay
- Attach the IPC side of circuit 370 to pin 1 (86) of the relay
- Run a ground wire to relay pin 3 (30)
- Run a wire from switched ignition (hot in run) source to relay pin 2 (85)
- Tape any exposed wires or connectors to prevent them from touching any exposed metal.

### Connector Locations

Locations

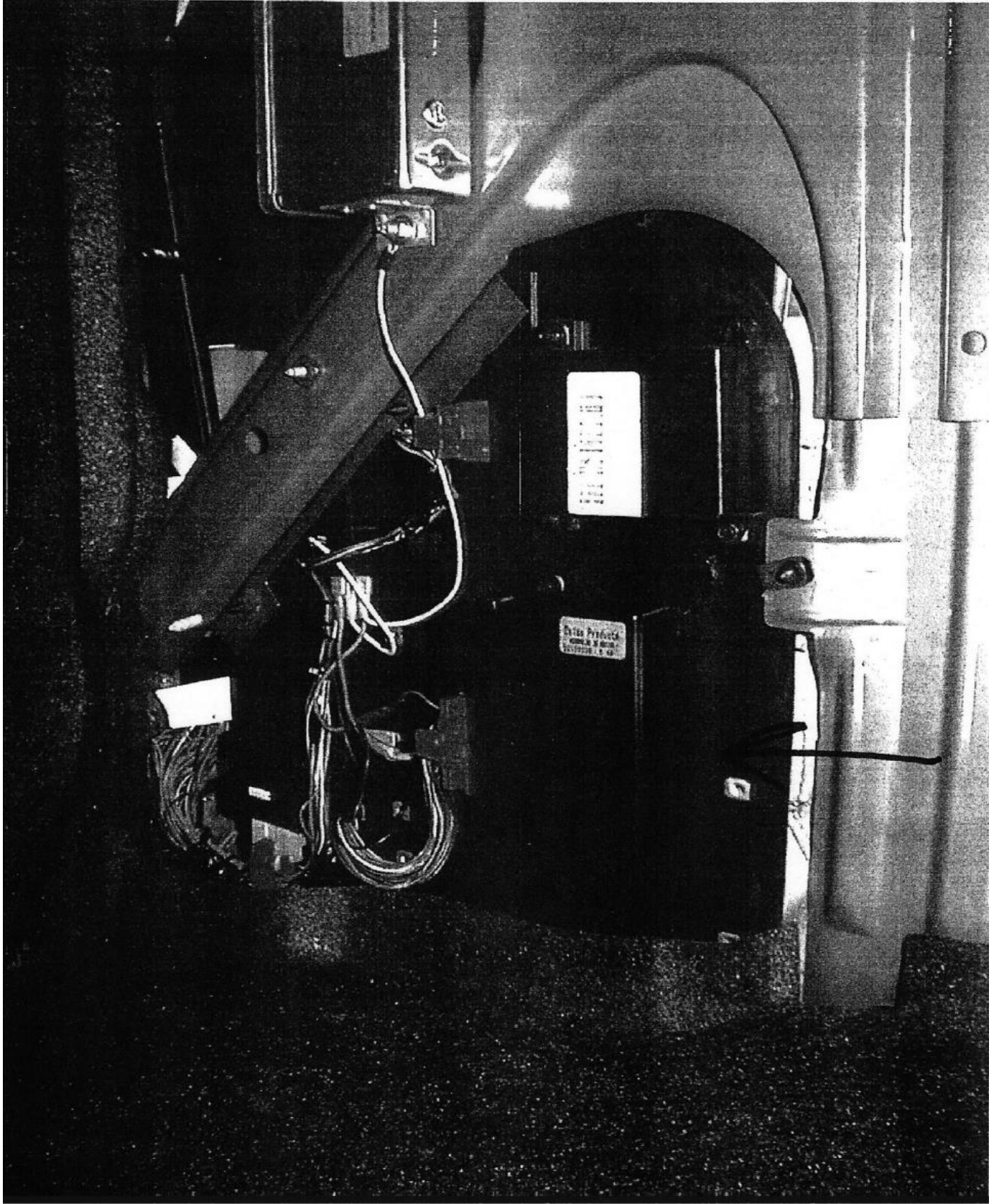
Notes



Disclaimer:

Even though every attempt is made to ensure this information is complete and accurate, it is impossible to account for all possible circumstances or situations. Please consult with a qualified auto technician before attempting to perform any work you are not qualified to do. Automobiles can be hazardous to work on; be sure to take all necessary safety precautions. Failure to do so may result in property damage or personal injury. Certain motor vehicle standards and performance requirements may apply to your motor vehicle (such as Federal Motor Vehicle Safety Standards by the National Highway Traffic Safety Administration). Be sure that your work is performed in accordance with such standards and that you do not disable any motor vehicle safety feature.

**ATTENTION:** Refer to the appropriate shop manual for your vehicle to obtain specific service procedures for this part. If you do not have a service manual or lack the skill to install this part, it is recommended that you seek the services of a qualified technician. Pay special attention to all cautions and warnings included in the shop manual. Read and follow all instructions carefully.



**Disclaimer:**

Even though every attempt is made to ensure this information is complete and accurate, it is impossible to account for all possible circumstances or situations. Please consult with a qualified auto technician before attempting to perform any work you are not qualified to do. Automobiles can be hazardous to work on; be sure to take all necessary safety precautions. Failure to do so may result in property damage or personal injury. Certain motor vehicle standards and performance requirements may apply to your motor vehicle (such as Federal Motor Vehicle Safety Standards by the National Highway Traffic Safety Administration). Be sure that your work is performed in accordance with such standards and that you do not disable any motor vehicle safety feature.





# INSTALL/REMOVAL INSTRUCTIONS: AIR SUSPENSION CONVERSION KIT

**ATTENTION:** Refer to the appropriate shop manual for your vehicle to obtain specific service procedures for this part. If you do not have a service manual or lack the skill to install this part, it is recommended that you seek the services of a qualified technician. Pay special attention to all cautions and warnings included in the shop manual. Read and follow all instructions carefully.

## Air Suspension Conversion Kit Cadillac Rear Installation Instructions

### Tools needed for installation

- Metric socket set
- Support the vehicle
- Floor jack
- Jack stands
- Metric wrenches
- Wire cutter/stripper/crimping tool
- Screwdrivers (Phillips and flat head)
- Spring compressor (if applicable)
- Allen wrenches

Disclaimer:

Even though every attempt is made to ensure this information is complete and accurate, it is impossible to account for all possible circumstances or situations. Please consult with a qualified auto technician before attempting to perform any work you are not qualified to do. Automobiles can be hazardous to work on; be sure to take all necessary safety precautions. Failure to do so may result in property damage or personal injury. Certain motor vehicle standards and performance requirements may apply to your motor vehicle (such as Federal Motor Vehicle Safety Standards by the National Highway Traffic Safety Administration). Be sure that your work is performed in accordance with such standards and that you do not disable any motor vehicle safety feature.

**ATTENTION:** Refer to the appropriate shop manual for your vehicle to obtain specific service procedures for this part. If you do not have a service manual or lack the skill to install this part, it is recommended that you seek the services of a qualified technician. Pay special attention to all cautions and warnings included in the shop manual. Read and follow all instructions carefully.

## Cadillac Rear Installation Instructions

### Rear Shock Removal Instructions

- Raise and support the vehicle. Remove rear wheels. (See Figures 1-2)

Fig. 1



Fig. 2



- Remove air tube from the shock.  
(See Fig. 3)

Fig. 3



- Remove two bolts securing the shock to control arm.

**Note:** Some models may have only one bolt securing the bottom of the shock.  
(See Fig. 4)

Fig. 4



#### Disclaimer:

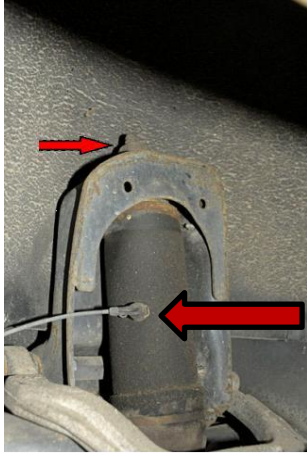
Even though every attempt is made to ensure this information is complete and accurate, it is impossible to account for all possible circumstances or situations. Please consult with a qualified auto technician before attempting to perform any work you are not qualified to do. Automobiles can be hazardous to work on; be sure to take all necessary safety precautions. Failure to do so may result in property damage or personal injury. Certain motor vehicle standards and performance requirements may apply to your motor vehicle (such as Federal Motor Vehicle Safety Standards by the National Highway Traffic Safety Administration). Be sure that your work is performed in accordance with such standards and that you do not disable any motor vehicle safety feature.

**ATTENTION:** Refer to the appropriate shop manual for your vehicle to obtain specific service procedures for this part. If you do not have a service manual or lack the skill to install this part, it is recommended that you seek the services of a qualified technician. Pay special attention to all cautions and warnings included in the shop manual. Read and follow all instructions carefully.

## Cadillac Rear Installation Instructions

- Remove upper shock nut and remove the shock from the vehicle. (See Figures 5 - 6)

Fig. 5



Remove the air line to the shock.

Fig. 6



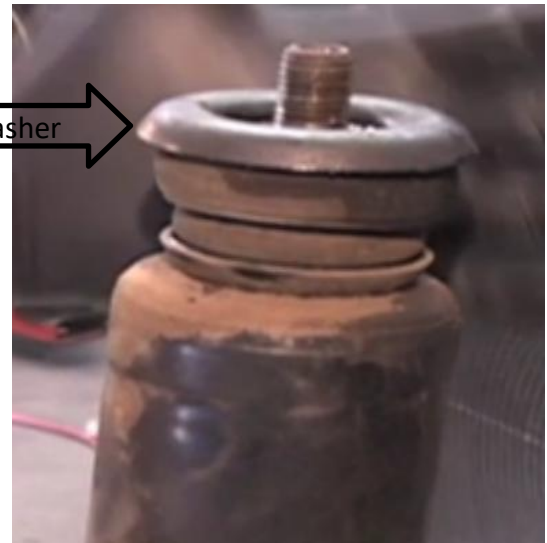
Fig. 7

- Keep the old factory washer from the top of the shock as shown in Fig. 7 This washer will be reused.



- Remove the shock from the vehicle. Make a note of the shock bushings prior to removing them from the old shock.

Save and reuse this washer



Disclaimer:

Even though every attempt is made to ensure this information is complete and accurate, it is impossible to account for all possible circumstances or situations. Please consult with a qualified auto technician before attempting to perform any work you are not qualified to do. Automobiles can be hazardous to work on; be sure to take all necessary safety precautions. Failure to do so may result in property damage or personal injury. Certain motor vehicle standards and performance requirements may apply to your motor vehicle (such as Federal Motor Vehicle Safety Standards by the National Highway Traffic Safety Administration). Be sure that your work is performed in accordance with such standards and that you do not disable any motor vehicle safety feature.

**ATTENTION:** Refer to the appropriate shop manual for your vehicle to obtain specific service procedures for this part. If you do not have a service manual or lack the skill to install this part, it is recommended that you seek the services of a qualified technician. Pay special attention to all cautions and warnings included in the shop manual. Read and follow all instructions carefully.

## Cadillac Rear Installation Instructions Rear Coil Spring Removal Instructions

- Disconnect the rear stabilizer bar from the knuckle. (See Figures 1 - 2)

Fig. 1

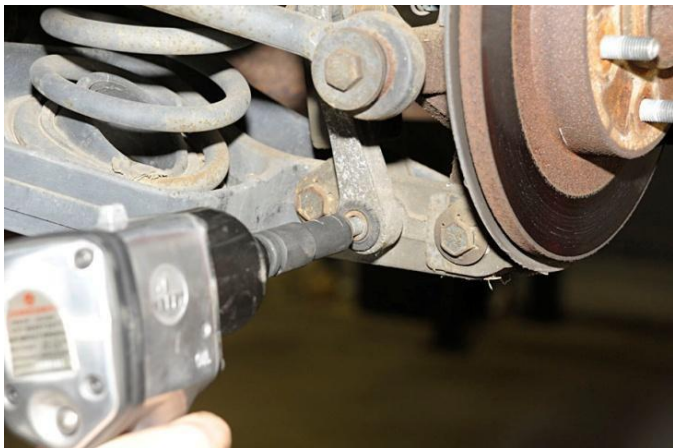


Fig. 2



- Place the jack under the control arm to relieve tension from pivot bolts. Remove the rear control arm bolts and nut. (See Fig. 3)

Fig. 3



- Slowly lower the jack until the bolt can be removed. Remove the coil spring. (See Fig. 4)

Fig. 4



### Disclaimer:

Even though every attempt is made to ensure this information is complete and accurate, it is impossible to account for all possible circumstances or situations. Please consult with a qualified auto technician before attempting to perform any work you are not qualified to do. Automobiles can be hazardous to work on; be sure to take all necessary safety precautions. Failure to do so may result in property damage or personal injury. Certain motor vehicle standards and performance requirements may apply to your motor vehicle (such as Federal Motor Vehicle Safety Standards by the National Highway Traffic Safety Administration). Be sure that your work is performed in accordance with such standards and that you do not disable any motor vehicle safety feature.

**ATTENTION:** Refer to the appropriate shop manual for your vehicle to obtain specific service procedures for this part. If you do not have a service manual or lack the skill to install this part, it is recommended that you seek the services of a qualified technician. Pay special attention to all cautions and warnings included in the shop manual. Read and follow all instructions carefully.

## Cadillac Rear Installation Instructions Rear Coil Spring Installation Instructions

Read the instructions carefully before attempting the installation. Call our Technical Support Line with any problems during the installation.

**Important:** To ensure proper orientation of the spring, rest the spring (Without insulators) on a flat surface. The spring will stand up straight when resting on its top end, but will lean or tip when resting on its bottom end.

- Install with the flat side up, and the pigtail at the lowest point on control arm. On the passenger side, the pigtail will point to the rear of the vehicle. On the driver's side, the pig tail will point to the front of the vehicle.



- Slowly jack up the rear control arm and replace bolt.
- Reconnect the rear stabilizer bar and lower shock mount.
- Remove the jack.



### Disclaimer:

Even though every attempt is made to ensure this information is complete and accurate, it is impossible to account for all possible circumstances or situations. Please consult with a qualified auto technician before attempting to perform any work you are not qualified to do. Automobiles can be hazardous to work on; be sure to take all necessary safety precautions. Failure to do so may result in property damage or personal injury. Certain motor vehicle standards and performance requirements may apply to your motor vehicle (such as Federal Motor Vehicle Safety Standards by the National Highway Traffic Safety Administration). Be sure that your work is performed in accordance with such standards and that you do not disable any motor vehicle safety feature.

**ATTENTION:** Refer to the appropriate shop manual for your vehicle to obtain specific service procedures for this part. If you do not have a service manual or lack the skill to install this part, it is recommended that you seek the services of a qualified technician. Pay special attention to all cautions and warnings included in the shop manual. Read and follow all instructions carefully.

## Cadillac Rear Installation Instructions

### Cadillac Rear Shock Washer Set-up Steps

Step 1: Locate the top shock bushing and the bottom shock bushing.



Step 2: Install lower bushing kit.



Step 3: Install in vehicle.



Step 4: Reuse original shock washer with new top bushing.

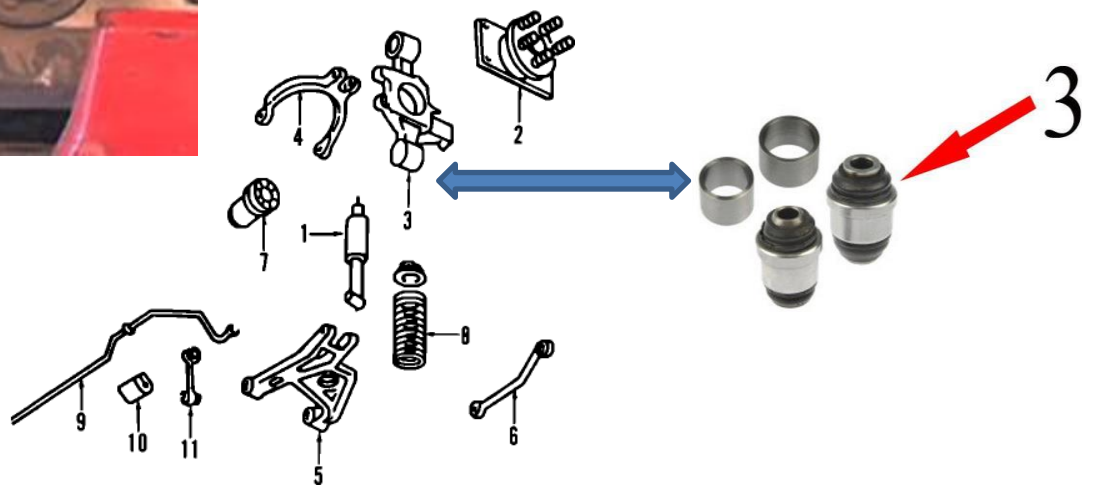


#### Disclaimer:

Even though every attempt is made to ensure this information is complete and accurate, it is impossible to account for all possible circumstances or situations. Please consult with a qualified auto technician before attempting to perform any work you are not qualified to do. Automobiles can be hazardous to work on; be sure to take all necessary safety precautions. Failure to do so may result in property damage or personal injury. Certain motor vehicle standards and performance requirements may apply to your motor vehicle (such as Federal Motor Vehicle Safety Standards by the National Highway Traffic Safety Administration). Be sure that your work is performed in accordance with such standards and that you do not disable any motor vehicle safety feature.

**ATTENTION:** Refer to the appropriate shop manual for your vehicle to obtain specific service procedures for this part. If you do not have a service manual or lack the skill to install this part, it is recommended that you seek the services of a qualified technician. Pay special attention to all cautions and warnings included in the shop manual. Read and follow all instructions carefully.

- Install and tighten the lower shock bolt.



**Note:** The rear springs may settle some during the first couple of weeks of use. It may be necessary to adjust the front height sensors to match the level of the new rear springs.

The rear springs can sit a little low if the rear shocks are bad. Replace the shocks if needed.

Dorman provides the best in performance suspension parts equipment.