

INSTALL/REMOVAL INSTRUCTIONS: AIR SUSPENSION CONVERSION KIT

ATTENTION: Refer to the appropriate shop manual for your vehicle to obtain specific service procedures for this part. If you do not have a service manual or lack the skill to install this part, it is recommended that you seek the services of a qualified technician. Pay special attention to all cautions and warnings included in the shop manual. Read and follow all instructions carefully.

Air Suspension Conversion Kit

General Installation Instructions

When servicing any vehicle be sure to follow all safety procedures. First, make sure that when lifting the vehicle that you use an appropriate jack with a proper weight rating. Before going underneath any vehicle, make sure that it is properly supported with sturdy jack stands and on level ground so that the vehicle doesn't fall or slide off of the jack and onto you. As with any automotive repair, make sure you have the appropriate tools to do the job so you don't damage any parts on the vehicle. Safety glasses and mechanic's gloves should also be worn for your protection.

Take care not to exceed the Gross Vehicle Weight Rating (GVWR), or the maximum load recommended by the manufacturer. It is important that all the vehicle owner manuals recommendations are followed for your own safety and to prevent damage to the vehicle.

Once you are ready to disable the ride light, you will need to disconnect the negative battery cable (-) to prevent electrical shock/malfunction.

Disclaimer:

Even though every attempt is made to ensure this information is complete and accurate, it is impossible to account for all possible circumstances or situations. Please consult with a qualified auto technician before attempting to perform any work you are not qualified to do. Automobiles can be hazardous to work on; be sure to take all necessary safety precautions. Failure to do so may result in property damage or personal injury. Certain motor vehicle standards and performance requirements may apply to your motor vehicle (such as Federal Motor Vehicle Safety Standards by the National Highway Traffic Safety Administration). Be sure that your work is performed in accordance with such standards and that you do not disable any motor vehicle safety feature.

ATTENTION: Refer to the appropriate shop manual for your vehicle to obtain specific service procedures for this part. If you do not have a service manual or lack the skill to install this part, it is recommended that you seek the services of a qualified technician. Pay special attention to all cautions and warnings included in the shop manual. Read and follow all instructions carefully.

Installation Guide

Range Rover 1995-2002

4-Wheel Conversion Kit Installation Guide

Parts included in this kit

- (2) # 30 springs, front
- (2) # 31 springs, rear
- (8) Plates
- (4) Shocks (if purchased)



Tools needed for installation

- Metric socket set
- Floor jack or vehicle lift
- Jack stands
- Metric wrenches
- Screwdrivers (Phillips and flat head)
- Wire cutter/stripper/crimping tool
- Level work surface
- Spring compressor
- Allen wrenches
- Miscellaneous tools

Disclaimer:

Even though every attempt is made to ensure this information is complete and accurate, it is impossible to account for all possible circumstances or situations. Please consult with a qualified auto technician before attempting to perform any work you are not qualified to do. Automobiles can be hazardous to work on; be sure to take all necessary safety precautions. Failure to do so may result in property damage or personal injury. Certain motor vehicle standards and performance requirements may apply to your motor vehicle (such as Federal Motor Vehicle Safety Standards by the National Highway Traffic Safety Administration). Be sure that your work is performed in accordance with such standards and that you do not disable any motor vehicle safety feature.

ATTENTION: Refer to the appropriate shop manual for your vehicle to obtain specific service procedures for this part. If you do not have a service manual or lack the skill to install this part, it is recommended that you seek the services of a qualified technician. Pay special attention to all cautions and warnings included in the shop manual. Read and follow all instructions carefully.

Range Rover 1995 – 2002

4-Wheel Conversion Kit Installation Guide

Read instructions carefully before attempting installation. If you have problems during the installation, then feel free to call our technical support line. Please have your invoice handy before calling.

Front Air Spring & Shock Removal

- Raise vehicle and support before removing tires.
- Remove inner fender liner. (Fig. 1)

Fig. 1



Wear eye protection

- Depressurize the air spring by removing the nylon air hose at the top. To remove, push the metal collet in
- while pulling on the hose. (Fig. 2) Cutting the air line is an alternative

Fig. 2



- Remove the two upper securing clips. (Fig. 3)
- Remove the bolt that secures the retaining pin of the lower air spring to the front axle. (Fig. 4)

Fig. 3



Fig. 4



Disclaimer:

Even though every attempt is made to ensure this information is complete and accurate, it is impossible to account for all possible circumstances or situations. Please consult with a qualified auto technician before attempting to perform any work you are not qualified to do. Automobiles can be hazardous to work on; be sure to take all necessary safety precautions. Failure to do so may result in property damage or personal injury. Certain motor vehicle standards and performance requirements may apply to your motor vehicle (such as Federal Motor Vehicle Safety Standards by the National Highway Traffic Safety Administration). Be sure that your work is performed in accordance with such standards and that you do not disable any motor vehicle safety feature.

ATTENTION: Refer to the appropriate shop manual for your vehicle to obtain specific service procedures for this part. If you do not have a service manual or lack the skill to install this part, it is recommended that you seek the services of a qualified technician. Pay special attention to all cautions and warnings included in the shop manual. Read and follow all instructions carefully.

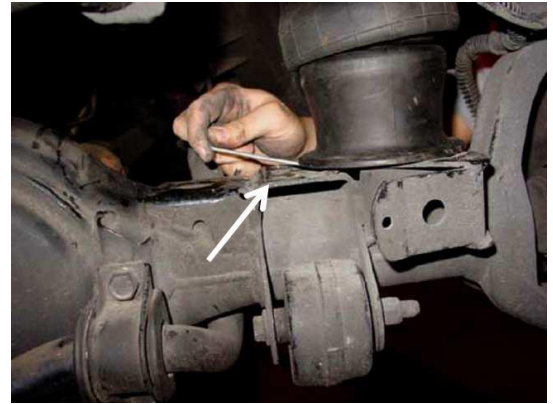
Range Rover 1995 - 2002

4-Wheel Conversion Kit Installation Guide Cont'd

Front Air Spring & Shock Removal

- Remove the lower air spring retaining pin. (Fig. 5)

Fig. 5



- Remove air spring from the vehicle. (Fig. 6)

Fig. 6



- Remove the air spring from the opposite side of vehicle.
- Place jack stands under axle to raise and support axle.
- Raise axle about 1-inch to remove the lower shock nut at the axle (both sides of vehicle). (Fig. 7)

Fig. 7



- If in installing new shocks remove the old shocks at this time.
- If using the old shocks, leave the upper portion of the shock mounted.

Disclaimer:

Even though every attempt is made to ensure this information is complete and accurate, it is impossible to account for all possible circumstances or situations. Please consult with a qualified auto technician before attempting to perform any work you are not qualified to do. Automobiles can be hazardous to work on; be sure to take all necessary safety precautions. Failure to do so may result in property damage or personal injury. Certain motor vehicle standards and performance requirements may apply to your motor vehicle (such as Federal Motor Vehicle Safety Standards by the National Highway Traffic Safety Administration). Be sure that your work is performed in accordance with such standards and that you do not disable any motor vehicle safety feature.

ATTENTION: Refer to the appropriate shop manual for your vehicle to obtain specific service procedures for this part. If you do not have a service manual or lack the skill to install this part, it is recommended that you seek the services of a qualified technician. Pay special attention to all cautions and warnings included in the shop manual. Read and follow all instructions carefully.

Range Rover 1995 -2002 4-Wheel Conversion Kit Installation Guide Cont'd

Front Spring & Shock Installation

- When replacing the existing shocks, install shocks into upper mounts on both sides of the vehicle and let them hang.
- If not replacing shocks, proceed to the next step.
- In the hardware package remove the plates marked "Front Bottom" (Fig. 1)
- This plate is rested on the front axle. Rotate the plate until the D-shaped bolt head fits into the D-shaped hole on the axle. Plate should rest flush on the axle pad. (Fig. 2-3)
- Install plates on both ends of the axle. (Fig. 3)
- Lower the front axle as far as possible without stretching the brake lines or wires.

Fig. 1



Fig. 2



Fig. 3



Disclaimer:

Even though every attempt is made to ensure this information is complete and accurate, it is impossible to account for all possible circumstances or situations. Please consult with a qualified auto technician before attempting to perform any work you are not qualified to do. Automobiles can be hazardous to work on; be sure to take all necessary safety precautions. Failure to do so may result in property damage or personal injury. Certain motor vehicle standards and performance requirements may apply to your motor vehicle (such as Federal Motor Vehicle Safety Standards by the National Highway Traffic Safety Administration). Be sure that your work is performed in accordance with such standards and that you do not disable any motor vehicle safety feature.

ATTENTION: Refer to the appropriate shop manual for your vehicle to obtain specific service procedures for this part. If you do not have a service manual or lack the skill to install this part, it is recommended that you seek the services of a qualified technician. Pay special attention to all cautions and warnings included in the shop manual. Read and follow all instructions carefully.

Range Rover 1995 -2002 4-Wheel Conversion Kit Installation Guide Cont'd

- Remove the “front top” plates from the package. Remove the #30 springs from the box. (Fig. 4) (smsp#30 spring is for front axle only)
- The # 30 spring will need to be compressed with a spring compressor to install.
- Compress the spring approximately 1-1/2 to 2 inches to install.
- With the spring compressed, and spring upright, (lettering not upside down), place the plate marked “front top” on top of the spring. (Fig. 5)

Fig. 4



Fig. 5



- Now place the whole assembly onto the front lower axle plate. (Fig. 6-7)
- Raise the axle while you guide the upper plate into the upper hole as in Fig. 7-8.

Fig. 6



Fig. 7

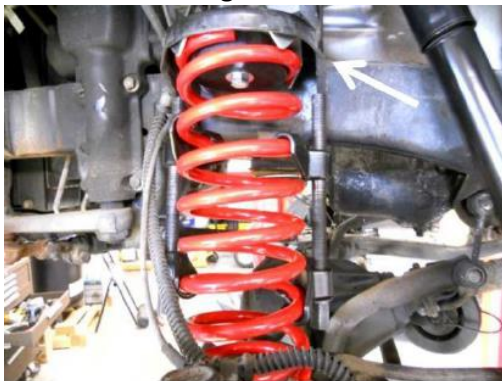


Fig. 8



Disclaimer:

Even though every attempt is made to ensure this information is complete and accurate, it is impossible to account for all possible circumstances or situations. Please consult with a qualified auto technician before attempting to perform any work you are not qualified to do. Automobiles can be hazardous to work on; be sure to take all necessary safety precautions. Failure to do so may result in property damage or personal injury. Certain motor vehicle standards and performance requirements may apply to your motor vehicle (such as Federal Motor Vehicle Safety Standards by the National Highway Traffic Safety Administration). Be sure that your work is performed in accordance with such standards and that you do not disable any motor vehicle safety feature.

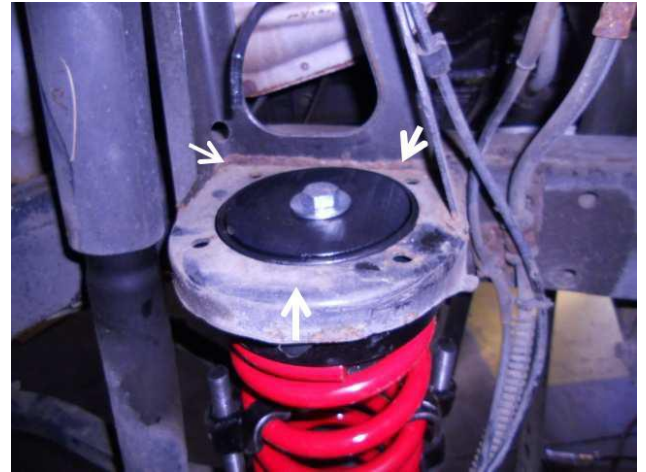
ATTENTION: Refer to the appropriate shop manual for your vehicle to obtain specific service procedures for this part. If you do not have a service manual or lack the skill to install this part, it is recommended that you seek the services of a qualified technician. Pay special attention to all cautions and warnings included in the shop manual. Read and follow all instructions carefully.

Range Rover 1995-2002

4-Wheel Conversion Kit Installation Guide

- Make sure the rubber ring on the top plate is seated all the way around in the upper bracket. (Fig. 9)

Fig. 9



- With the axle still raised, attach the lower shock to its mounting bracket. (Fig. 10)
- Make sure the spring is aligned in the lower plate, as well as in the upper bracket. When all is aligned and shock is bolted in place, remove the spring compressor.

Fig. 10



- Now, lower the axle on that side until the shock holds the axle.
- Repeat installation procedure for the opposite side.
- Zip-tie the air lines away from hot or moving parts.
- Install wheel well liners.
- With all plates and springs in place and shock bolts tight, lower front axle and install tires. Torque lugs to factory specs.

Front installation is now complete.



Disclaimer:

Even though every attempt is made to ensure this information is complete and accurate, it is impossible to account for all possible circumstances or situations. Please consult with a qualified auto technician before attempting to perform any work you are not qualified to do. Automobiles can be hazardous to work on; be sure to take all necessary safety precautions. Failure to do so may result in property damage or personal injury. Certain motor vehicle standards and performance requirements may apply to your motor vehicle (such as Federal Motor Vehicle Safety Standards by the National Highway Traffic Safety Administration). Be sure that your work is performed in accordance with such standards and that you do not disable any motor vehicle safety feature.

ATTENTION: Refer to the appropriate shop manual for your vehicle to obtain specific service procedures for this part. If you do not have a service manual or lack the skill to install this part, it is recommended that you seek the services of a qualified technician. Pay special attention to all cautions and warnings included in the shop manual. Read and follow all instructions carefully.

Range Rover 1995-2002

4-Wheel conversion Kit Installation Guide

Always use extreme caution when lifting vehicle
Refer to owner's manual for instructions.

Rear Air Spring & Shock Removal

- Raise vehicle so that tires are off the ground.
Support vehicle.
- Remove both wheels.
- Locate the air lines to the air springs between the frame and body. (Fig. 1)
- Wearing eye protection, use a screwdriver to push in the metal collet. Then, pull out the air line. (Fig. 2) (Cutting the line is an alternative)
- Remove the metal clip in the same area to free the top of the air spring. (Fig. 2)
- Remove the metal clip at the bottom of the air spring at the axle. (Fig. 3)
- Remove both air springs from the vehicle. (Fig. 4)



Fig. 1

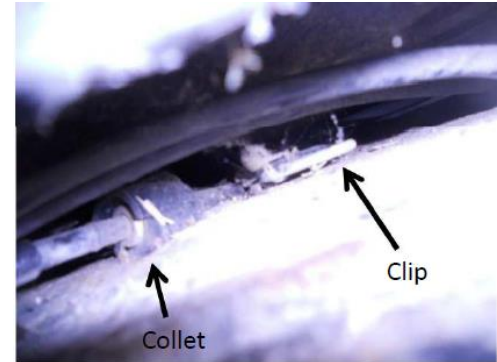


Fig. 2

Fig. 3



Fig. 4



Disclaimer:

Even though every attempt is made to ensure this information is complete and accurate, it is impossible to account for all possible circumstances or situations. Please consult with a qualified auto technician before attempting to perform any work you are not qualified to do. Automobiles can be hazardous to work on; be sure to take all necessary safety precautions. Failure to do so may result in property damage or personal injury. Certain motor vehicle standards and performance requirements may apply to your motor vehicle (such as Federal Motor Vehicle Safety Standards by the National Highway Traffic Safety Administration). Be sure that your work is performed in accordance with such standards and that you do not disable any motor vehicle safety feature.

ATTENTION: Refer to the appropriate shop manual for your vehicle to obtain specific service procedures for this part. If you do not have a service manual or lack the skill to install this part, it is recommended that you seek the services of a qualified technician. Pay special attention to all cautions and warnings included in the shop manual. Read and follow all instructions carefully.

Range Rover 1995-2002

4-Wheel Conversion Kit Installation Guide

Rear Air Spring & Shock Removal Cont'd

- Place jack stands under the axle to raise and support the axle.
- Raise the axle about one inch to take load off shocks.
- Remove lower shock nuts on each side of vehicle. (Fig. 5-6)
- If replacing the shocks remove the old shocks at this time.
- If using existing shocks leave the upper portion of the shock mounted.

Fig. 5



Fig. 6



Disclaimer:

Even though every attempt is made to ensure this information is complete and accurate, it is impossible to account for all possible circumstances or situations. Please consult with a qualified auto technician before attempting to perform any work you are not qualified to do. Automobiles can be hazardous to work on; be sure to take all necessary safety precautions. Failure to do so may result in property damage or personal injury. Certain motor vehicle standards and performance requirements may apply to your motor vehicle (such as Federal Motor Vehicle Safety Standards by the National Highway Traffic Safety Administration). Be sure that your work is performed in accordance with such standards and that you do not disable any motor vehicle safety feature.

ATTENTION: Refer to the appropriate shop manual for your vehicle to obtain specific service procedures for this part. If you do not have a service manual or lack the skill to install this part, it is recommended that you seek the services of a qualified technician. Pay special attention to all cautions and warnings included in the shop manual. Read and follow all instructions carefully.

Range Rover 1995-2002

4-Wheel Conversion Kit Installation Guide

Rear Spring & Shock Installation

- When replacing the existing shocks, install shocks into upper mounts on both sides of the vehicle and let them hang.
- If using existing shocks, proceed with the next step.
- Remove the two plates marked “Rear Bottom” from the hardware package. (Fig. 1)
- Remove the nut and washer from the bottom of both plates.
- With the bolts, place both plates on the axle over the holes that the air springs were previously mounted in. Make sure bolt treads are through the axle bracket. (Fig. 2)
- On the underside of axle bracket install washer and nut and tighten each one. (Fig. 3)
- Lower axle as far as possible without stretching the brake line.

Fig. 1



Fig. 2



Fig. 3



Disclaimer:

Even though every attempt is made to ensure this information is complete and accurate, it is impossible to account for all possible circumstances or situations. Please consult with a qualified auto technician before attempting to perform any work you are not qualified to do. Automobiles can be hazardous to work on; be sure to take all necessary safety precautions. Failure to do so may result in property damage or personal injury. Certain motor vehicle standards and performance requirements may apply to your motor vehicle (such as Federal Motor Vehicle Safety Standards by the National Highway Traffic Safety Administration). Be sure that your work is performed in accordance with such standards and that you do not disable any motor vehicle safety feature.

ATTENTION: Refer to the appropriate shop manual for your vehicle to obtain specific service procedures for this part. If you do not have a service manual or lack the skill to install this part, it is recommended that you seek the services of a qualified technician. Pay special attention to all cautions and warnings included in the shop manual. Read and follow all instructions carefully.

Range Rover 1995-2002 4-Wheel Conversion Kit Installation Guide Rear Spring & Shock Installation Cont'd

- Take the remaining plates marked “Rear Top” and place them on top of the #31 Springs. (Fig. 4)
#31 springs fit rear only

Fig. 4



- With a helper, install each spring onto the axle plates.
- While holding the springs in place raise the axle until the upper plates are about to touch up in the frame pocket. (Fig. 5)

Frame pocket with oval shape



Fig. 5

- Rotate the spring and upper plate until the two nuts on the plate will seat into and through the oval shape in the frame pocket. (Fig. 5)

Figure 6 shows how the two nuts need to align into the oval shape.



Fig. 6

Disclaimer:

Even though every attempt is made to ensure this information is complete and accurate, it is impossible to account for all possible circumstances or situations. Please consult with a qualified auto technician before attempting to perform any work you are not qualified to do. Automobiles can be hazardous to work on; be sure to take all necessary safety precautions. Failure to do so may result in property damage or personal injury. Certain motor vehicle standards and performance requirements may apply to your motor vehicle (such as Federal Motor Vehicle Safety Standards by the National Highway Traffic Safety Administration). Be sure that your work is performed in accordance with such standards and that you do not disable any motor vehicle safety feature.

ATTENTION: Refer to the appropriate shop manual for your vehicle to obtain specific service procedures for this part. If you do not have a service manual or lack the skill to install this part, it is recommended that you seek the services of a qualified technician. Pay special attention to all cautions and warnings included in the shop manual. Read and follow all instructions carefully.

Range Rover 1995-2002

4-Wheel Conversion Kit Installation Guide

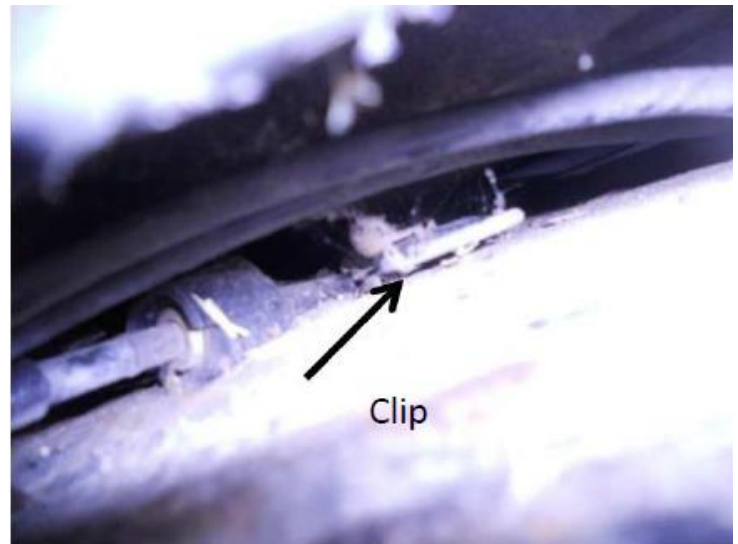
Rear spring & Shock Installation Cont'd

- Continue to raise axle and seat the upper plates flush in frame pocket.
- Check that the nuts on the plate are in the oval by looking between the frame and body where you removed the air spring clip from. (Fig. 7)

- Once both upper plates are seated and the lower part of the springs are resting in the axle plates, raise the axle and attach the lower shocks to the axle on both sides. Tighten nuts.
- With both spring assemblies in place and shocks nuts tight, remove jack stands from the axle. Install wheels and tighten lug nuts to factory specs.

- Lower vehicle to the ground. You may hear a pop sound as the upper plates completely seat into the frame pockets.

Fig. 7



Disclaimer:

Even though every attempt is made to ensure this information is complete and accurate, it is impossible to account for all possible circumstances or situations. Please consult with a qualified auto technician before attempting to perform any work you are not qualified to do. Automobiles can be hazardous to work on; be sure to take all necessary safety precautions. Failure to do so may result in property damage or personal injury. Certain motor vehicle standards and performance requirements may apply to your motor vehicle (such as Federal Motor Vehicle Safety Standards by the National Highway Traffic Safety Administration). Be sure that your work is performed in accordance with such standards and that you do not disable any motor vehicle safety feature.

ATTENTION: Refer to the appropriate shop manual for your vehicle to obtain specific service procedures for this part. If you do not have a service manual or lack the skill to install this part, it is recommended that you seek the services of a qualified technician. Pay special attention to all cautions and warnings included in the shop manual. Read and follow all instructions carefully.

Range Rover 1995-2002

4-Wheel Conversion Kit Installation guide

Air Ride Light Disarming Instructions

- Locate the EAS control module beneath the driver's seat. Remove trim panel. (The module will be the one on the bottom under the transmission controller). (Fig. 1)
- Disconnect the module's connector. (Fig. 2)
- In the connector that you just removed, locate the blue wire with the pink stripe.
- Cut the blue/pink wire. Crimp an eyelet to the wire and permanently ground this wire. (Fig. 3)
- Next, in the same connector, locate the blue wire with the white stripe.
- The blue/white wire will need to be held to a ground temporarily while turning the ignition key to the run position. (Fig. 4)
- After you here the audible alert sounds, remove the blue/white wire from ground and tape up the end of it.
- This action will put the EAS module in manual mode and eliminate the fault/35mph warning light.
- Leave the connector permanently unplugged.
- Install trim panel.

Fig. 1



Fig. 2



Fig. 3



Fig. 4

